

Heat-induced apoptosis and gene expression in bovine mammary epithelial cells

Han Hu^{A,B,C,*}, *Jiaqi Wang*^{A,B,C,D*}, *Haina Gao*^{A,B,C}, *Songli Li*^{A,B,C}, *Yangdong Zhang*^{A,B,C} and *Nan Zheng*^{A,B,C}

^AMinistry of Agriculture – Milk Risk Assessment Laboratory, Institute of Animal Science, Chinese Academy of Agricultural Sciences, Beijing 100193, China.

^BMinistry of Agriculture – Milk and Dairy Product Inspection Centre, Beijing 100193, China.

^CState Key Laboratory of Animal Nutrition, Institute of Animal Science, Chinese Academy of Agricultural Sciences, Beijing 100193, China.

^DCorresponding author. Email: wangjiaqinmqc@126.com

*These authors contributed equally.

Supplementary material for quality check of real-time PCR.



Fig. S1. Amplification curve of one of the Caspase genes.

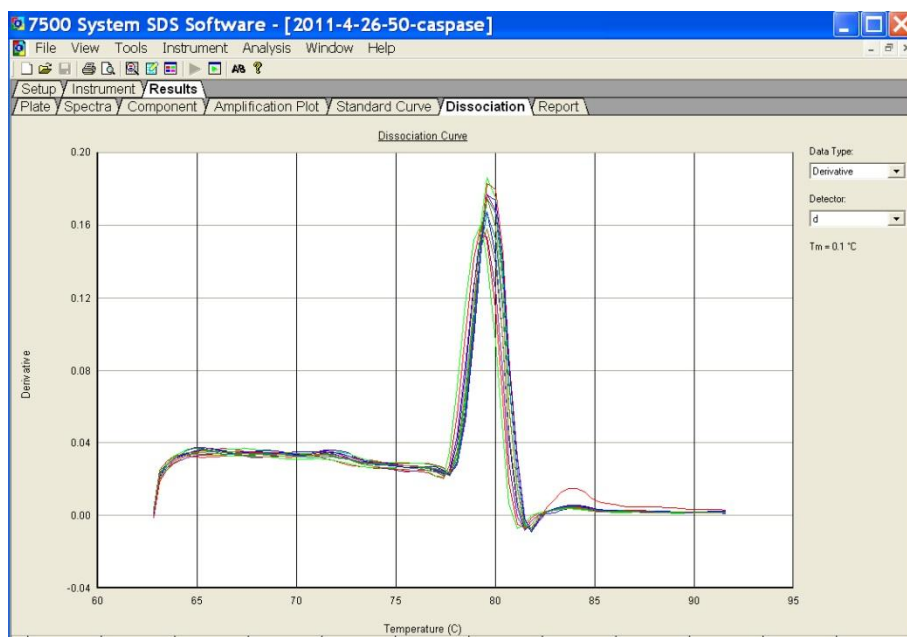


Fig. S2. Dissociation curve of one of the Caspase genes.



Fig. S3. PCR efficiency of primers.