

[10.1071/SR22210](https://doi.org/10.1071/SR22210)

Soil Research

Supplementary Material

Redesigning the soil Tea Bag Index methodology for school and citizen science in Australia

Wartini Ng^{A,}, Alex B. McBratney^A, Vanessa Pino^A, Eugenia O'Brien^A, and Bendrik Baumeister^B*

^ASydney Institute of Agriculture & School of Life and Environmental Sciences, The University of Sydney, Sydney, NSW 2015, Australia.

^BSouthern Cross Analytical and Research Services, Southern Cross University, East Lismore, NSW 2480, Australia.

*Correspondence to: Wartini Ng Sydney Institute of Agriculture & School of Life and Environmental Sciences, The University of Sydney, Sydney, NSW 2015, Australia Email: wartini.ng@sydney.edu.au

Supplementary Material

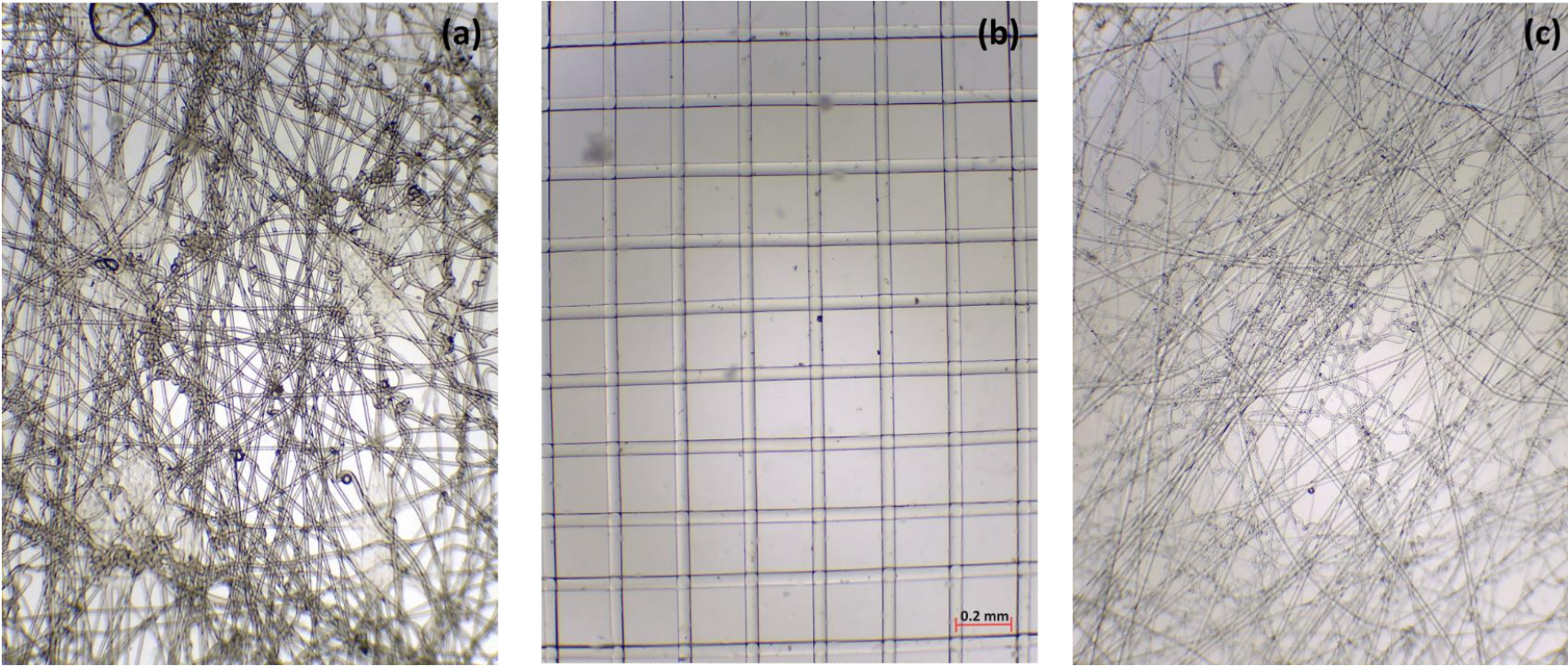


Figure S1. Microscope image of different tea bags mesh: (a) Lipton (b) Madame Flavour and (c) T2 using 40 x magnification factor.