

Supplementary Material

A prickly business—Edward Shelton, Henry Tryon and the mysterious pineapple disease

Malcolm J. Ryley^{A,*} and *Andre Drenth*^B

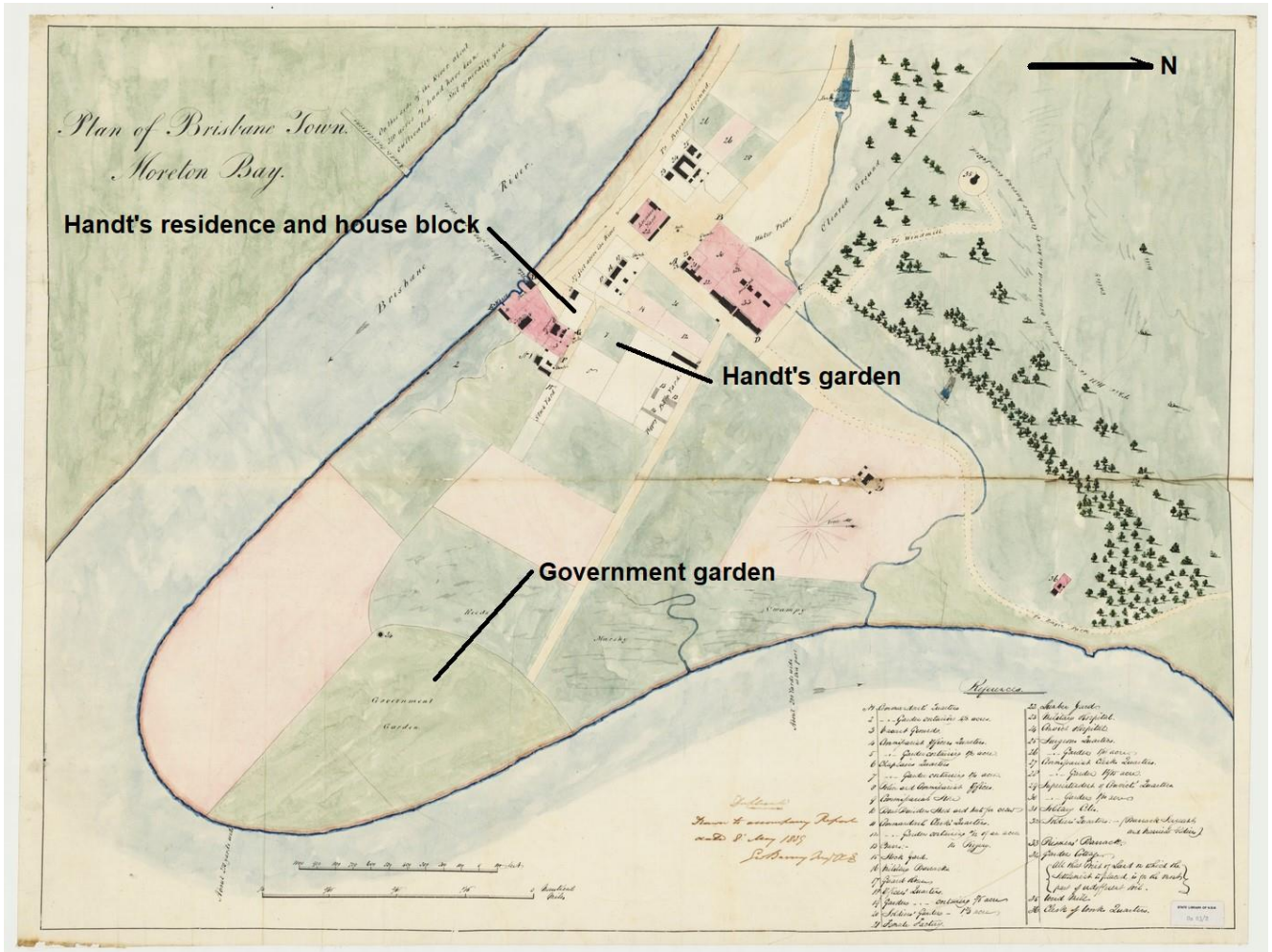
^ACentre for Crop Health, University of Southern Queensland, Toowoomba, Qld 4350, Australia

^BCentre for Horticultural Science, University of Queensland, St Lucia, Qld 4072, Australia

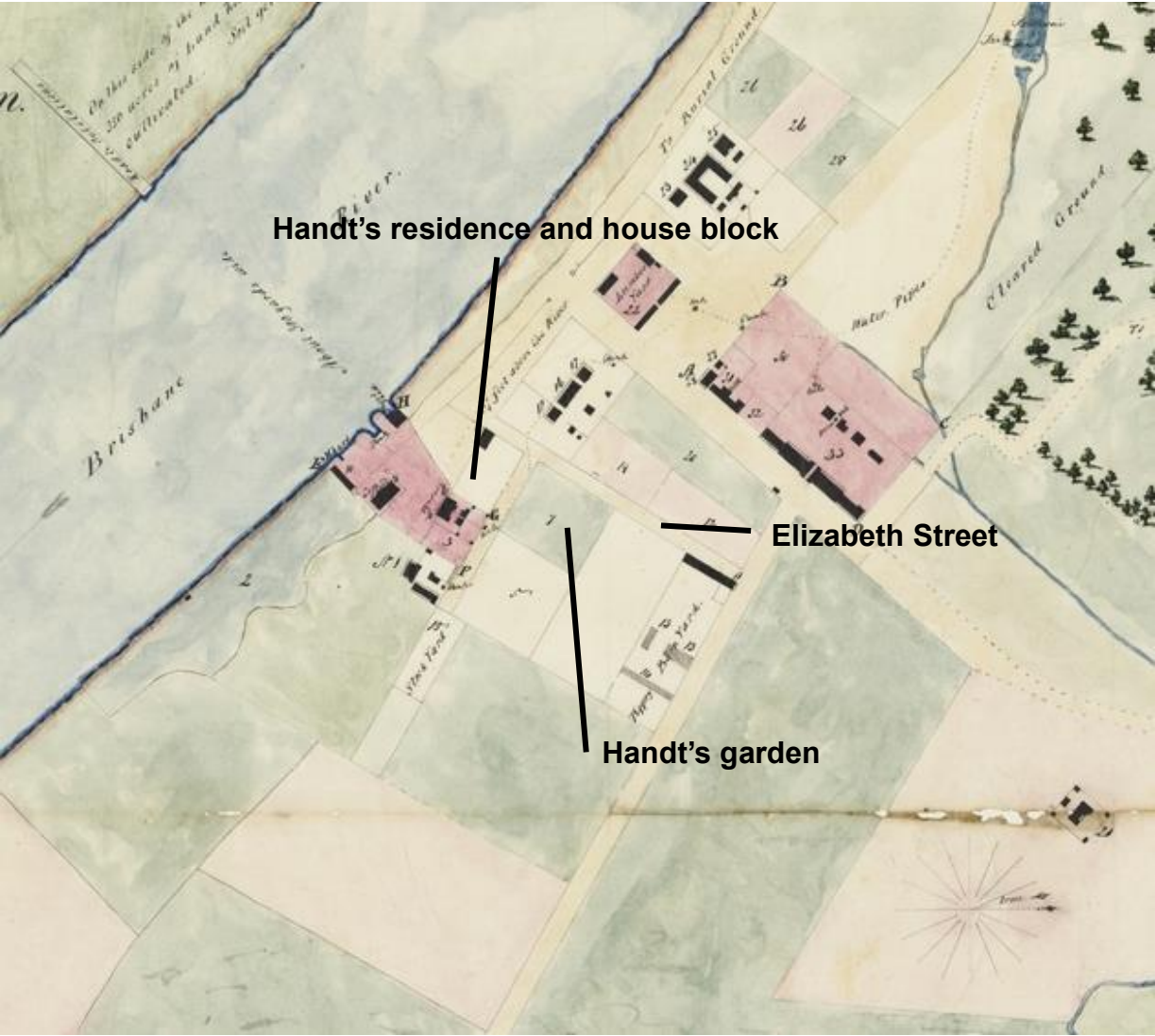
*Correspondence to: Email: cropdocs61@gmail.com

HR23008 Supplementary Material

Supplementary Map 1. Handt's residence and garden, and the Government garden (now part of the Brisbane Botanic Gardens), Plan of Brisbane Town, Moreton Bay, 1839, by George Barney, sent as an Enclosure to Governor Gipp's Despatch no. 100 of 1 July 1839, FL3744892, <https://www.sl.New South Wales.gov.au/collection-items/map-brisbane-town-moreton-bay>, viewed August 2022.



Supplementary Map 2. Part of Supplementary Map 1 enlarged, showing locations of Handt's residence, house block and garden, and Elizabeth Street in modern Brisbane.



Supplementary Map 3. Site of Slade’s pineapple garden (arrow) and post office (star), and Queen Street in modern Brisbane, Map of Brisbane 1844 by C.F. Gerler, State Library of Queensland, hdl.handle.net/10462/deriv/108532, viewed July 2022.

