

# Australian Health Review

## CONTENTS Volume 44, Number 1, 2020

### Indigenous Health Care

'We get so task orientated at times that we forget the people': staff communication experiences when caring for Aboriginal cardiac patients

*Janet Kelly, Anna Dowling, Katharine McBride, Wendy Keech and Alex Brown* 1

Customised approaches to vocational education can dramatically improve completion rates of Australian Aboriginal students

*Kylie Gwynne, Jorge Rojas, Monique Hines, Kim Bulkeley, Michelle Irving, Debbie McCowen and Michelle Lincoln* 7

### Health Workforce

Profile of the most common complaints for five health professions in Australia

*Merrilyn Walton, Patrick J. Kelly, E. Mary Chiarella, Terry Carney, Belinda Bennett, Marie Nagy and Suzanne Pierce* 15

Work-related injury and illness in the Victorian healthcare sector: a retrospective analysis of workers' compensation claim records

*Ting Xia and Alex Collie* 24

Psychiatric morbidity, burnout and distress in Australian physician trainees

*Carmen Axisa, Louise Nash, Patrick Kelly and Simon Willcock* 31

Allied health pre-entry student clinical placement capacity: can it be sustained?

*Liza-Jane McBride, Cate Fitzgerald, Claire Costello and Kristy Perkins* 39

Supporting Northern Territory Top End allied health graduates and early career staff by means of an interprofessional graduate program

*Prasha Sooful, Justine Williams and Renae Moore* 47

'Right fit, right job, right time': case study of a new model for allied health recruitment in public health settings

*Toni Withiel, Lucinda Marr and Genevieve Juj* 52

Allied health professionals in Queensland Health returning to work after maternity leave: hours of work and duration of time on part-time hours

*Julie Hulcombe, Sandra Capra and Gillian Whitehouse* 56

### Chronic Disease Management

Going digital: a narrative overview of the effects, quality and utility of mobile apps in chronic disease self-management

*Ian A. Scott, Paul Scuffham, Deepali Gupta, Tanya M. Harch, John Borchhi and Brent Richards* 62

Community-based case management does not reduce hospital admissions for older people: a systematic review and meta-analysis

*Nerissa Poupard, Clarice Y. Tang and Nora Shields* 83

Readmissions following hospitalisations for cardiovascular disease: a scoping review of the Australian literature

*Clementine Labrosciano, Tracy Air, Rosanna Tavella, John F. Beltrame and Isuru Ranasinghe* 93

Investment in Australian mental health carer services: how much and does it reflect evidence of effectiveness?

*Jaclyn Schess, Sandra Diminic, Emily Hielscher, Meredith G. Harris, Yong Yi Lee, Jan Kealton and Harvey A. Whiteford* 104

## Health Services and the Community

Paramedic involvement in health education within metropolitan, rural and remote Australia: a narrative review of the literature

*Tegwyn McManamny, Paul A. Jennings, Leanne Boyd, Jade Sheen and Judy A. Lowthian* 114

Road deaths relating to the attendance of medical appointments in Queensland

*Edwin Phillip Greenup and Boyd Alexander Potts* 121

Prevalence and characteristics associated with concurrent smoking and alcohol misuse within Australian general practice patients

*Breanne Hobden, Jamie Bryant, Kristy Forshaw, Christopher Oldmeadow, Tiffany-Jane Evans and Rob Sanson-Fisher* 125

Barriers to and facilitators of health services utilisation by refugees in resettlement countries: an overview of systematic reviews

*Jamuna Parajuli and Dell Horey* 132

Examination of the dependency and complexity of patients admitted to in-patient rehabilitation in Australia

*Duncan McKechnie, Julie Pryor, Murray J. Fisher and Tara Alexander* 143

## Health Services Research

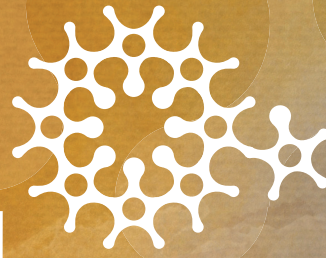
Characteristics and clinical outcomes of index versus non-index hospital readmissions in Australian hospitals: a cohort study

*Yogesh Sharma, Chris Horwood, Paul Hakendorf, John Au and Campbell Thompson* 153

Taking the pulse of the health services research community: a cross-sectional survey of research impact, barriers and support

*Elizabeth A. Fradgley, Jon Karnon, Della Roach, Katherine Harding, Laura Wilkinson-Meyers, Catherine Chojenta, Megan Campbell, Melissa L. Harris, Jacqueline Cumming, Kim Dalziel, Janet McDonald, Tilley Pain, Kirsten Smiler and Christine L. Paul* 160





# ahha

australian healthcare &  
hospitals association

---

*the voice of public healthcare®*

## AHHA—the voice of public healthcare

The Australian Healthcare and Hospitals Association (AHHA) is the 'voice of public healthcare'—we have been Australia's peak body for public and not-for-profit hospitals and healthcare for over 70 years.

Our vision is a healthy Australia, supported by the best possible healthcare system. We want Australians to have equitable access to high quality affordable healthcare when and where they need it.

We build networks, we share ideas, we advocate, and we consult. Our advocacy and thought leadership is backed by high

quality research, events and courses, and our publications—a twice-weekly electronic newsletter, *Healthcare in Brief*, a bi-monthly member magazine *The Health Advocate* and our peer-reviewed journal *Australian Health Review*.

AHHA is committed to working with all stakeholders from across the health sector.

Talk to us about how we can support your organisation to be a more effective, innovative and sustainable part of the Australian health system.

[www.ahha.asn.au](http://www.ahha.asn.au)





**“I want a  
super fund  
that’s an  
expert at  
managing  
money.”**

Vindhya Mendis,  
HESTA member

We’ve been awarded a 15 year platinum performance rating from Australia’s most respected super research company, SuperRatings.

That means we’re not only one of the largest super funds in the country, we’re also one of the best.



**HESTA**



Product ratings are only one factor to be considered when making a decision. See [hesta.com.au/ratings](https://hesta.com.au/ratings) for more information. Issued by H.E.S.T. Australia Ltd ABN 66 006 818 695 AFSL 235249, the Trustee of Health Employees Superannuation Trust Australia (HESTA) ABN 64 971 749 321. This information is of a general nature. It does not take into account your objectives, financial situation or specific needs so you should look at your own financial position and requirements before making a decision. You may wish to consult an adviser when doing this. Before making a decision about HESTA products you should read the relevant product disclosure statement (call 1800 813 327 or visit [hesta.com.au/pds](https://hesta.com.au/pds) for a copy), and consider any relevant risks ([hesta.com.au/understandingrisk](https://hesta.com.au/understandingrisk)).



# Australian Healthcare and Hospitals Association

***Australian Health Review* is the journal of the Australian Healthcare and Hospitals Association (AHHA), Australia's national peak body for public health care providers.**

We are a national voice for public healthcare, advocating our vision for an effective, innovative and sustainable health system where all Australians have equitable access to healthcare of the highest standard when and where they need it. We inform, advocate and influence health debate and policy development by undertaking and promoting research, highlighting evidence-informed practice, and effectively communicating issues and ideas.

Our membership includes state health departments, Local Hospital Networks and public hospitals, community health services, Primary Health Networks and primary healthcare providers, aged care and allied health providers, health-related businesses, universities, individual health professionals and academics. As such, we are uniquely placed to be an independent, national voice for universal high quality healthcare to benefit the whole community.

## Membership

Membership of AHHA is open to any organisation whose aims or activities are connected with:

- the provision of hospital or healthcare services
- the improvement of healthcare, or
- the supply of goods and services to hospitals or healthcare services

Universities or other educational organisations that offer courses of education and/or research in relevant healthcare related fields and individuals who are practitioners, employees within a relevant health field or students in a relevant field of health-related study are also welcome to join AHHA.

In addition to membership of the AHHA, organisations such as universities and institutes conducting health system research can become members of AHHA through the Deeble Institute for Health Policy Research. Deeble Institute membership confers similar benefits to AHHA membership along with the opportunity to influence and participate in the research activities of the Institute.

**For further details on becoming a member of the AHHA including the fees and specific member benefits for each membership type, please visit our website at [ahha.asn.au/membership](http://ahha.asn.au/membership).**

## Our contact details

Australian Healthcare and Hospitals Association  
PO Box 78  
Deakin West ACT 2061

P. 02 6162 0780

F. 02 6162 0779

E. [admin@ahha.asn.au](mailto:admin@ahha.asn.au)

W. [ahha.asn.au](http://ahha.asn.au)

 [facebook.com/AusHealthcare](https://www.facebook.com/AusHealthcare)

 @AusHealthcare

 [linkedin.com/company/australian-healthcare-&-hospitals-association](https://www.linkedin.com/company/australian-healthcare-&-hospitals-association)

© Australian Healthcare and Hospitals Association 2020

***AHHA's mission: to conduct research, educate and influence the healthcare system to achieve better health outcomes, improved patient and provider experience, greater equity and sustainability.***

