

Effects of *Spirulina (Arthrospira) platensis* and *Bacillus subtilis* PB6 on growth performance, intestinal microbiota and morphology, and serum parameters in broiler chickens

Mahboobullah Joya^{A,B}, Omid Ashayerizadeh^{A,C} and Behrouz Dastar^A

^ADepartment of Animal and Poultry Nutrition, Faculty of Animal Sciences, Gorgan University of Agricultural Sciences and Natural Resources, Gorgan, Iran.

^BPresent address: Department of Animal Science, Faculty of Agriculture, Badakhshan University, Dasht Qurogh, DIST6, Faizabad, Afghanistan.

^CCorresponding author. Email: O.ashayeri@gau.ac.ir

SUPPLEMENTARY MATERIAL

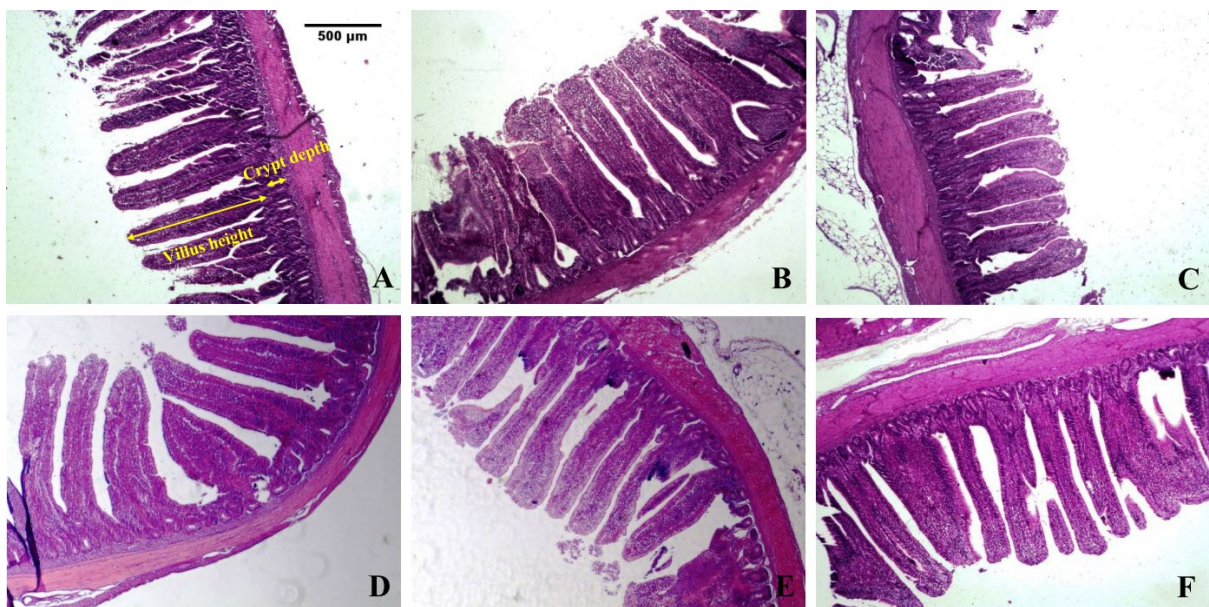


Fig. S1 Villus height and crypt depth in the ileum of broilers fed different dietary treatments at 42 days of age. A. Without *Spirulina* and probiotic; B. With probiotic; C. With 0.05% *Spirulina*. D. With 0.05% *Spirulina* + probiotic. E. With 0.1% *Spirulina*. F. With 0.1% *Spirulina* + probiotic.