

## **SUPPLEMENTARY MATERIAL**

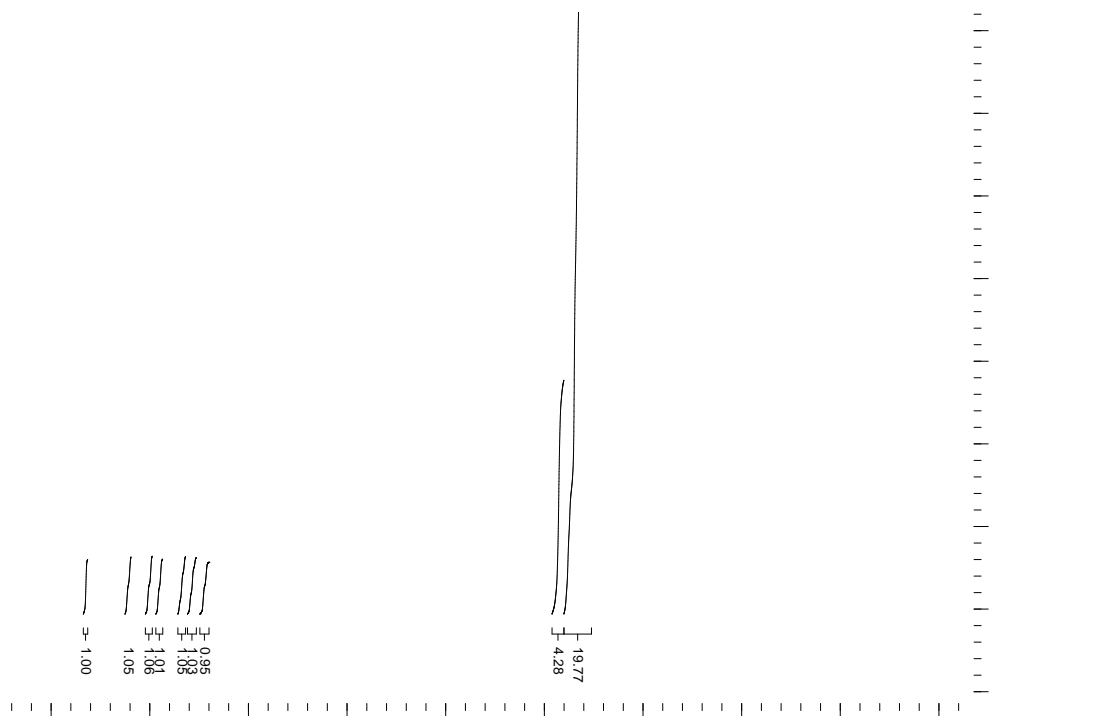
### **A Coumarin Fluorescent Probe for $\text{Ca}^{2+}$ Containing Aza Crown Ether Unit**

*Li-Qiang Yan,<sup>A,B</sup> Min-Sui Xie,<sup>A,B</sup> Ming-Sheng Peng,<sup>A,B,C</sup> and Wei Liu<sup>A,B</sup>*

<sup>A</sup> College of Chemistry & Chemical Engineering, Hainan Normal University, Haikou 571158, China

<sup>B</sup> Key Laboratory of Tropical Medicinal Plant Chemistry of Ministry of Education, Hainan Normal University, Haikou 571158, China

<sup>C</sup> Corresponding author. Email: pengmsh@163.com

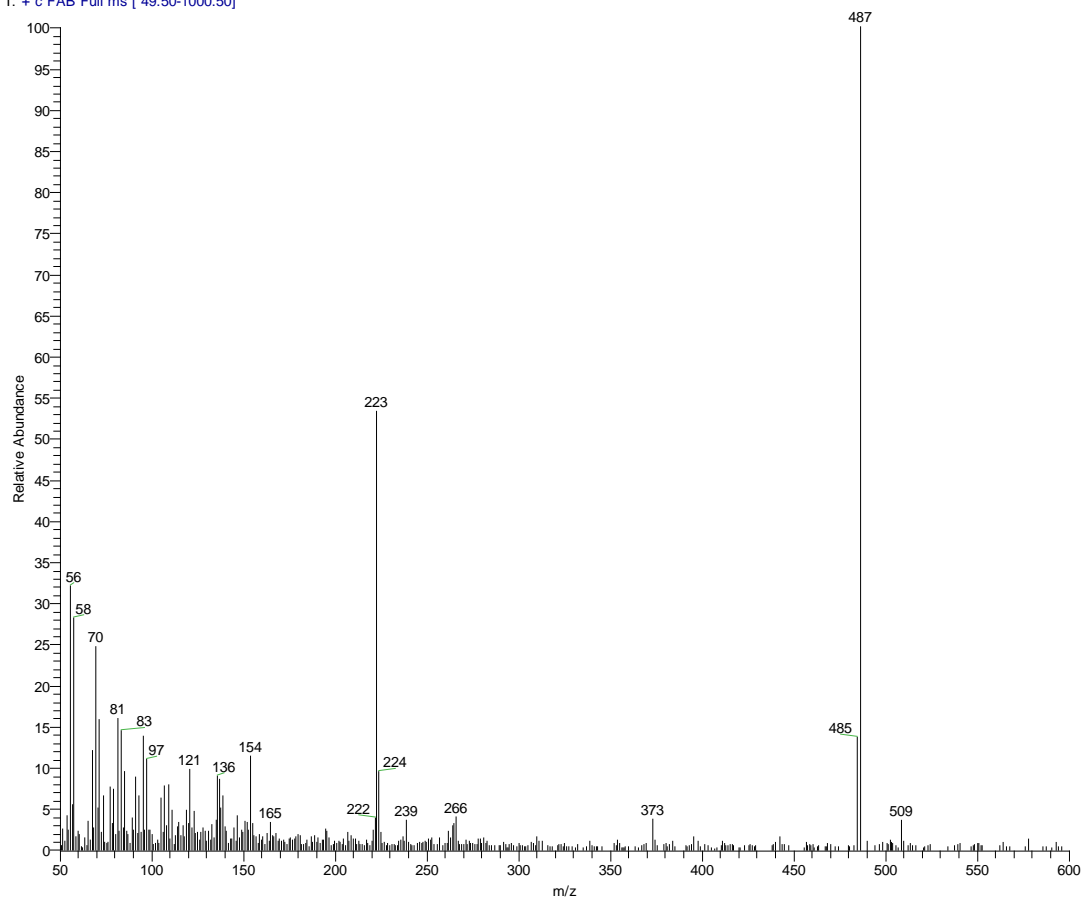


$^1\text{H NMR}$



$^{13}\text{C NMR}$

07122716-2 #15 RT: 1.44 AV: 1 NL: 1.70E5  
T: + c FAB Full ms [ 49.50-1000.50]



EI-MS