

SUPPLEMENTARY MATERIAL

**An Enantiomerically Pure Pyridine *NC*-Palladacycle Derived
from [2.2]Paracyclophane**

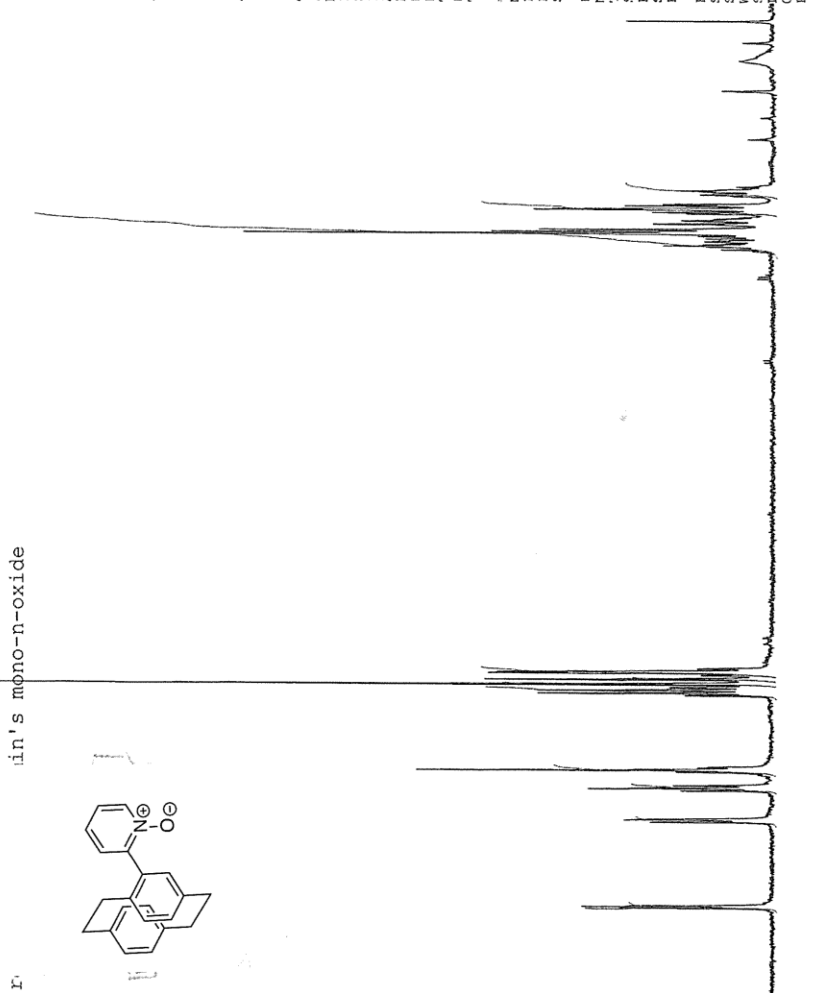
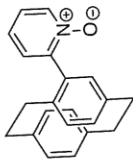
Jean E. Glover,^A Paul G. Plieger^A and Gareth J. Rowlands^{A,B}

^AInstitute of Fundamental Sciences, Massey University, Private
Bag 11 222, Palmerston North, New Zealand.

^BCorresponding author. Email: g.j.rowlands@massey.ac.nz

NO₂ NMR 4 10/16

Lin's mono-n-oxide



Current Data Parameters
 NAME XII-GJR-85a-p
 EXPNO 1
 PROCNO 1

F2 - Acquisition Parameters
 Date_ 20090106
 Time_ 14:10
 INSTRUM spect
 PROBHD 5 mm Multinucl
 PULPROG zg30
 TD 65536
 SOLVENT CDCl3
 NS 16
 DS 4
 SWH 8278.142 Hz
 FIDRES 0.1265314 Hz
 AQ 3.5584243 sec
 RG 2048
 DW 60.400 usec
 DE 6.00 usec
 TE 294.2 K
 DI 1.0000000 sec
 TDO 1

***** CHANNEL f1 *****
 NUC1 1H
 P1 9.30 usec
 PL1 4.00 dB
 SFO1 400.1324710 MHz

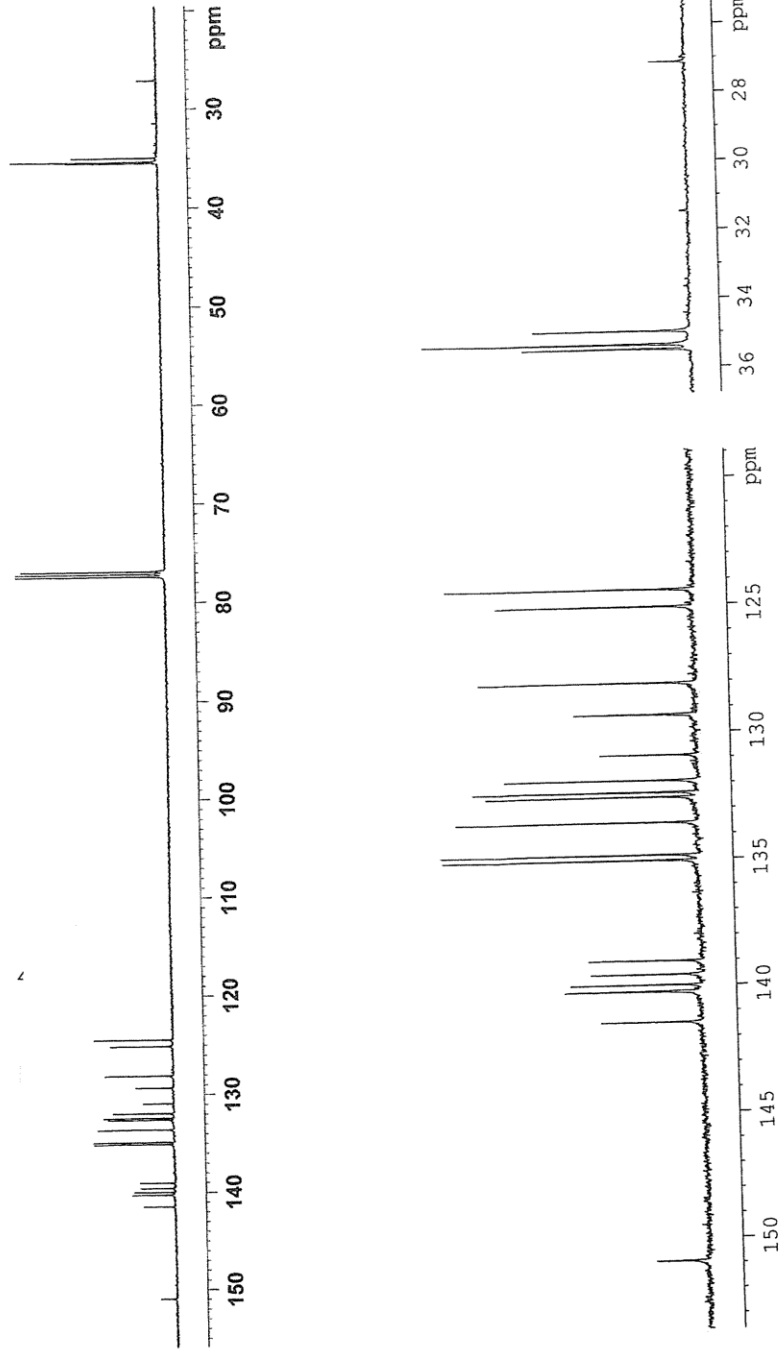
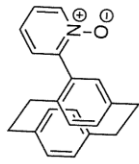
F1 - Acquisition Parameters
 TD 2
 SFO 250
 SF01 100.6203 MHz
 FIDRES 65.104164 Hz
 SW 165.639 ppm
 ENMODE Echo-Antiecho

F2 - Processing parameters
 SI 32768
 SF 400.1300000 MHz
 EQ
 SSB 0
 LB 0.30 Hz
 GB 0
 PC 1.00

F1 - Processing parameters
 SI 1024
 echo-antiecho
 100.6127690 MHz
 QSIN2
 LB 0.30 Hz
 GB 0.1

8.5 1.00
 8.0 0.96
 7.5 0.99
 7.0 1.52
 6.5 2.00
 6.0 1.88
 5.5 0.99
 5.0 2.02
 4.5
 4.0
 3.5 5.10
 3.0 2.03
 2.5 1.04
 2.0

XIIGJR85A-P

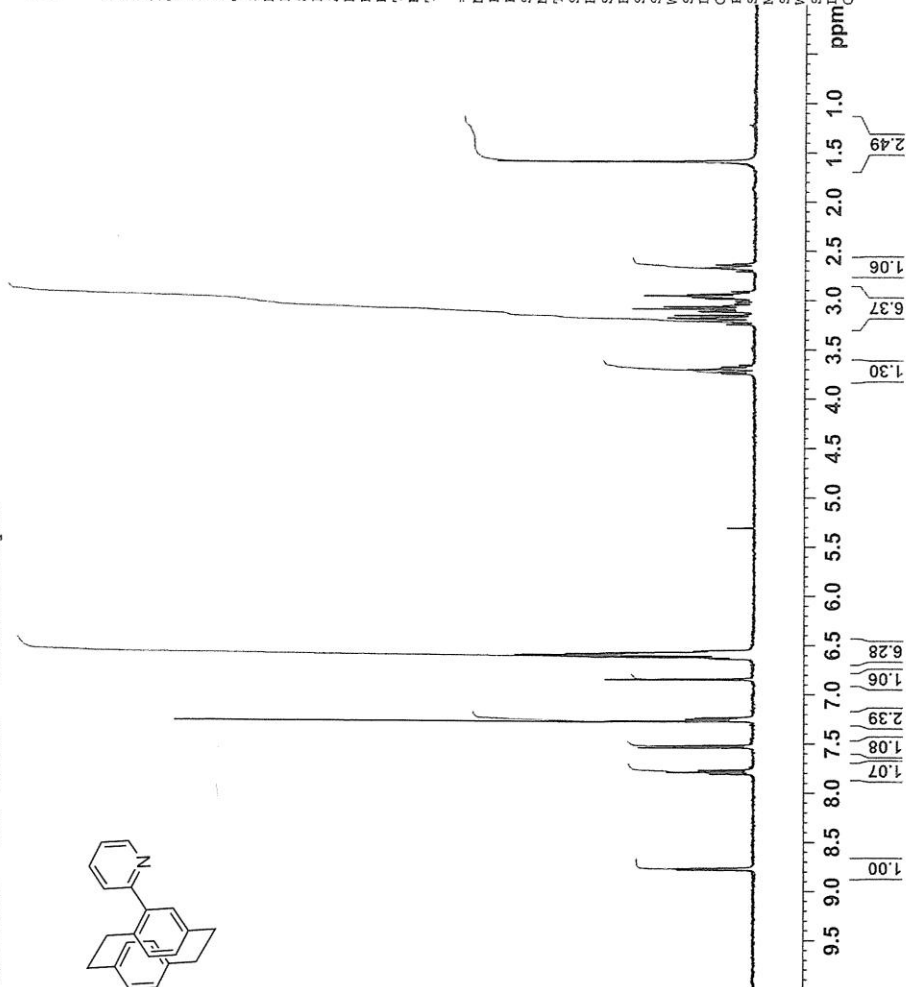


pyridine - 1st column - filter/reocryst



NAME XIII-GJR-5re
EXPNO 10
PROCNO 1
Date_ 20100116
Time_ 14.18
INSTRUM spect
PROBHD 5 mm Multicube1
PULPROG zgpg30
TD 65536
SOLVENT CDCl3
NS 1
DS 2
SWH 8278.146 Hz
FIDRES 0.126319 Hz
AQ 3.9588243 sec
RG 2896.3
DB 60.400 usec
DE 6.000 usec
TE 298.2 K
D1 1.00000000 sec
TD0 1

===== CHANNEL f1 =====
NUC1 1H
P1 10.00 usec
PL1 0.00 dB
SFO1 400.1324710 MHz
NU0 2
TD 256
SFO1 100.6283 MHz
FIDRES 65.1804184 Hz
SW 165.639 ppm
PRMODE Echo-Antiecho
SI 32768
SF 400.1300000 MHz
EN
GB 0
GB 0.30 Hz
GB 1.00
GB 1024
MC2 echo-antiecho
SF 100.6127690 MHz
PRMODE QSIINE
GB 0.30 Hz
GB 0.1



ANAL. - 5.2316 - 10.04 Z

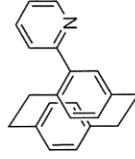
XII-GJR-92 C13

159.11
149.50
140.58
139.79
139.43
138.20
136.76
136.33
136.22
133.22
132.92
132.68
132.61
132.41
130.69
129.78
129.53
126.82
124.20
122.07
121.85
121.41

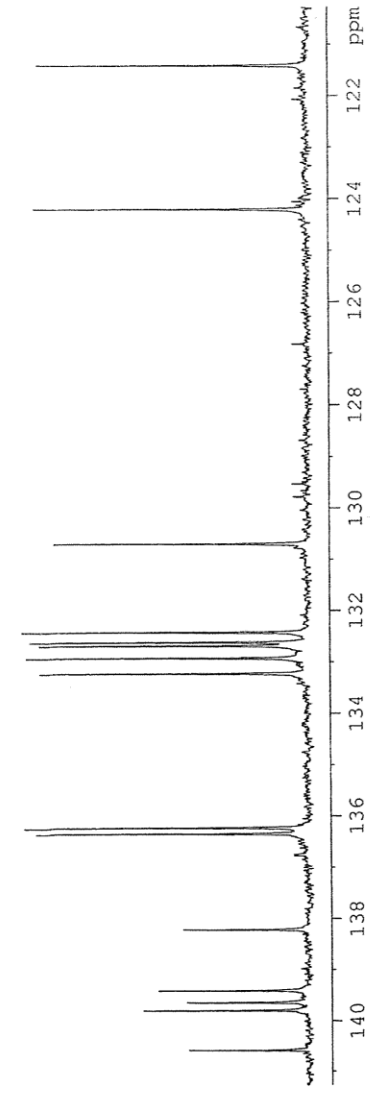
77.42
77.16
76.91

34.46
34.36
34.16
33.96
33.76
33.56
33.36
33.16
32.96
32.76
32.56
32.36
32.16
31.96
31.76
31.56
31.36
31.16
30.96
30.76
30.56
30.36
30.16
29.96
29.76
29.56
29.36
29.16
28.96
28.76
28.56
28.36
28.16
27.96
27.76
27.56
27.36
27.16
26.96
26.76
26.56
26.36
26.16
25.96
25.76
25.56
25.36
25.16
24.96
24.76
24.56
24.36
24.16
23.96
23.76
23.56
23.36
23.16
22.96
22.76
22.56
22.36
22.16
21.96
21.76
21.56
21.36
21.16
20.96
20.76
20.56
20.36
20.16
19.96
19.76
19.56
19.36
19.16
18.96
18.76
18.56
18.36
18.16
17.96
17.76
17.56
17.36
17.16
16.96
16.76
16.56
16.36
16.16
15.96
15.76
15.56
15.36
15.16
14.96
14.76
14.56
14.36
14.16
13.96
13.76
13.56
13.36
13.16
12.96
12.76
12.56
12.36
12.16
11.96
11.76
11.56
11.36
11.16
10.96
10.76
10.56
10.36
10.16
9.96
9.76
9.56
9.36
9.16
8.96
8.76
8.56
8.36
8.16
7.96
7.76
7.56
7.36
7.16
6.96
6.76
6.56
6.36
6.16
5.96
5.76
5.56
5.36
5.16
4.96
4.76
4.56
4.36
4.16
3.96
3.76
3.56
3.36
3.16
2.96
2.76
2.56
2.36
2.16
1.96
1.76
1.56
1.36
1.16
0.96
0.76
0.56
0.36
0.16

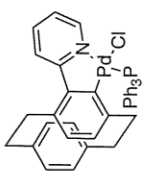
13C
SOLVENT



140.576
139.788
139.631
139.396
138.202
136.763
136.335
136.218
133.216
132.917
132.677
132.610
132.414
130.688
129.778
129.528
126.819
124.201
122.067
121.847
121.410



phosphine adduct after weekend



Current Data Parameters
 NAME XIV-GJR-30Col-rec
 EXNO 20
 PROCNO 1

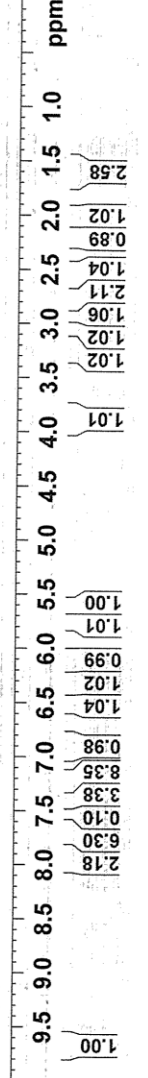
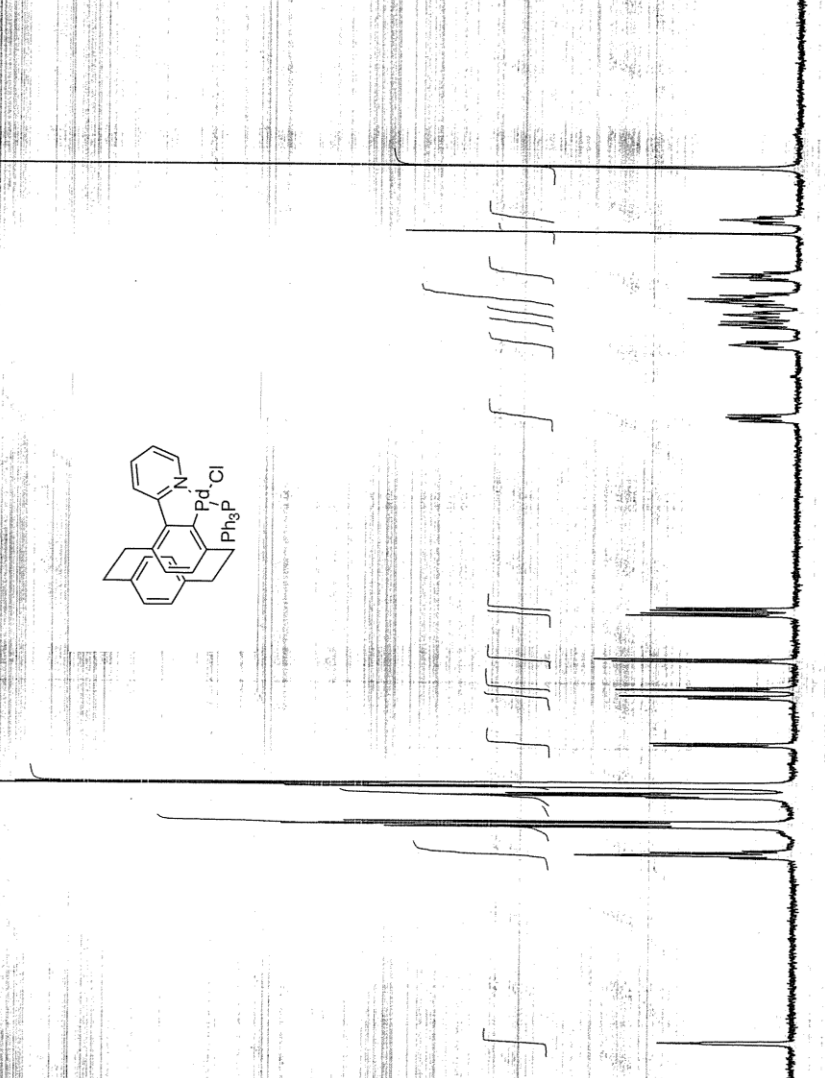
F2 - Acquisition Parameters
 Date 20111003
 Time 17.49
 INSTRUM spect
 PROBHD 5 mm Multinucl
 PULPROG zg30
 TD 65536
 SOLVENT CDC13
 NS 16
 DS 2
 SMH 8278.146 Hz
 FIDRES 0.126314 Hz
 AQ 3.9584243 sec
 RG 1824.6
 DE 60.400 usec
 TE 300.2 K
 PE 255.2 K
 DI 1.00000000 sec
 TDO 1

===== CHANNEL f1 =====
 NUC1 1H
 P1 10.00 usec
 PL1 4.00 dB
 SF01 400.1324710 MHz

F1 - Acquisition parameters
 NDO 2
 TD 256
 SF01 100.6203 MHz
 FIDRES 65.104164 Hz
 SW 165.639 ppm
 FMODE Echo-Antiecho

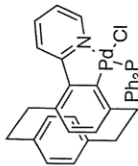
F2 - Processing parameters
 SI 32768
 SF 400.1300000 MHz
 EM 0
 SSB 0
 LB 0.30 Hz
 GB 0
 PC 1.00

F1 - Processing parameters
 SI 1024
 SF 100.6127690 MHz
 WDW QSINE
 SSB 2
 LB 0.30 Hz
 GB 0.1



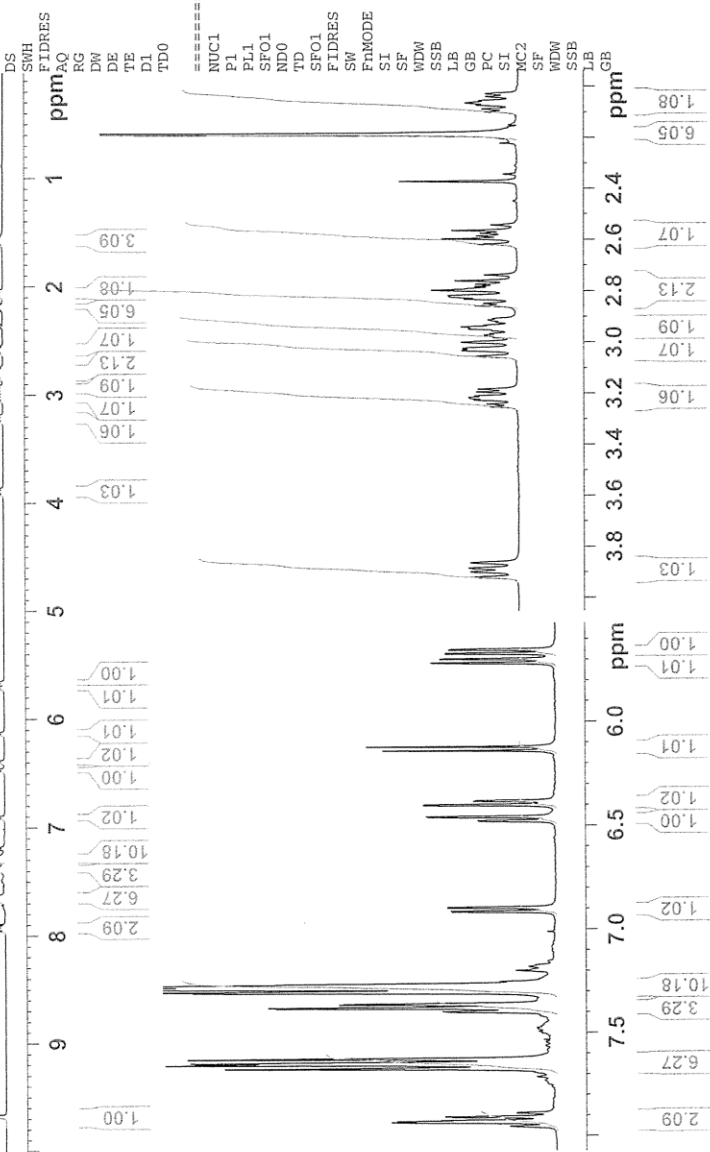


Ph3P adduct of palladacycle



NAME XIV-GJR-30
 EXPNO 10
 PROCNO 1
 Date_ 20110613
 Time_ 10.10
 INSTRUM spect
 PROBHD 5 mm Multinucl
 PULPROG zg30
 TD 65536
 SOLVENT CDCl3
 NS 16
 DS 2
 SWH 8278.146 Hz
 FIDRES 0.126314 Hz
 AQ 3.9584243 sec
 RG 322.5
 DW 60.400 usec
 DE 6.00 usec
 TE 298.2 K
 D1 1.0000000 sec
 TDO 1

===== CHANNEL f1 =====
 NUC1 LH
 P1 10.00 usec
 PL1 4.00 dB
 SFO1 400.1324710 MHz
 NDO 2
 TD 256
 SFO1 100.6203 MHz
 FIDRES 65.104164 Hz
 SW 165.639 ppm
 Echo-Antiecho
 SI 32768
 SF 400.1300000 MHz
 EM 0
 WDW 0
 SSB 0
 LB 0.30 Hz
 GB 0
 PC 1.00
 SI 1024
 TMC2
 SF 100.6127690 MHz
 WDW
 SSB 2
 LB 0.30 Hz
 GB 0.1



FINAL



Current data Parameters
 NAME XIV-GJR-30Col-rec
 EXPNO 60
 PROCNO 1

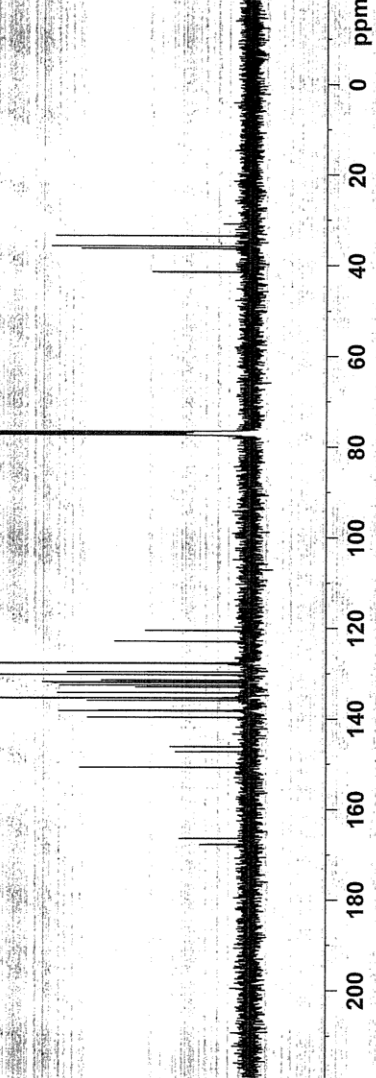
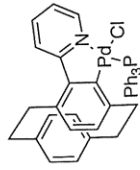
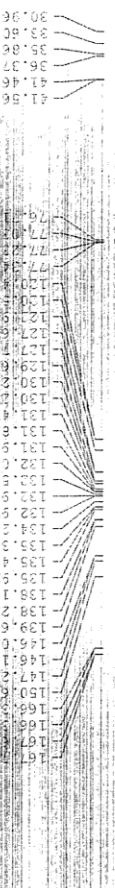
F2 - Acquisition Parameters
 Date 20111005
 Time 17.37
 INSTRUM spect
 PROBHD 5 mm Multinucl
 PULPROG zgpg30
 TD 65536
 SOLVENT CDCl3
 NS 16115
 DS 4
 SWH 23980.814 Hz
 FIDRES 0.368918 Hz
 AQ 1.3664756 sec
 RG 2048
 DM 20.850 usec
 DE 6.00 usec
 TE 296.2 K
 PL 12.75 usec
 PL1 -6.00 dB
 PL2 21.23 dB
 PL3 25.00 dB
 SF01 100.628298 MHz
 d1 2.0000000 sec
 d11 0.0300000 sec
 DELTA 1.8999998 sec
 TDO 1

===== CHANNEL f1 =====
 NUG1 13C
 PL 12.75 usec
 PL1 -6.00 dB
 SF01 100.628298 MHz

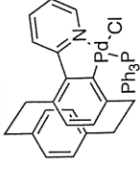
===== CHANNEL f2 =====
 CPDPRG2 waltz16
 NUC2 1H
 FCPD2 80.00 usec
 PL2 4.00 dB
 PL12 21.23 dB
 PL13 25.00 dB
 SF02 400.1316005 MHz

F2 - Processing parameters
 SI 32768
 SF 100.6127690 MHz
 WDM EM
 SSB 0
 LB 1.00 Hz
 GB 0
 PC 1.40

phosphine adduct



Recorded 30/09/11



Current Data Parameters
 NAME p31_p1be
 EXPNO 1
 PROCNO 1

F2 - Acquisition Parameters
 Date 20110930
 Time 14.34
 INSTRUM spect
 PROBHD 5-mm QNP 1H/13
 PULPROG zgpg30
 TD 65536
 SOLVENT CDCl3
 NS 64
 DS 4

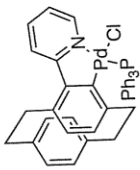
SWH 64935.066 Hz
 FIDRES 0.590830 Hz
 AQ 0.5046772 sec
 RG 20642.5
 DM 7.700 usec
 DE 6.00 usec
 TE 294.2 K
 D1 2.0000000 sec
 d11 0.0300000 sec
 DELTA 1.8999998 sec
 TDO 1

===== CHANNEL f1 =====
 NUC1 31P
 P1 9.20 usec
 PL1 2.00 dB
 SF01 161.8674942 MHz

===== CHANNEL f2 =====
 CPDPRG2 waltz16
 NUC2 1H
 FCPD2 80.00 usec
 PL2 0.00 dB
 PL12 18.00 dB
 PL13 120.00 dB
 SFO2 400.1316005 MHz

F2 - Processing parameters
 SI 32768
 SF 161.9755930 MHz
 WDW EM
 SSB 0
 LB 1.00 Hz
 GB 0
 PC 1.40





Ph3P adduct of palladacycle



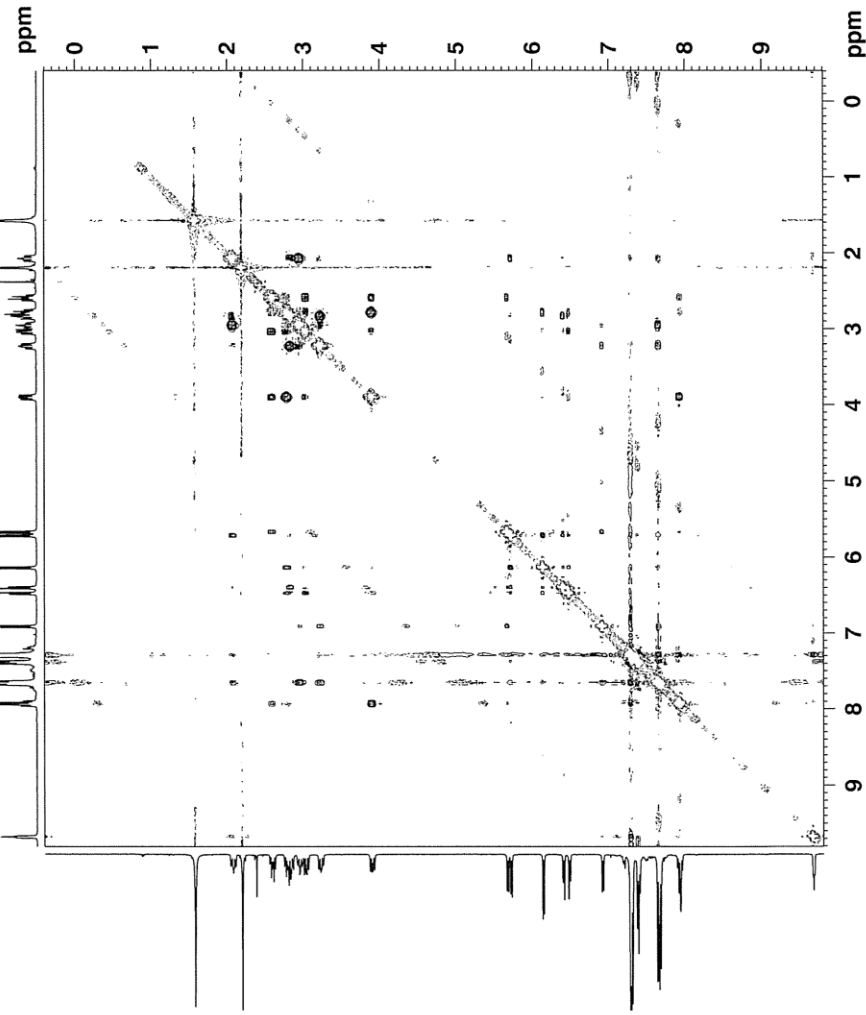
Current Data Parameters
 NAME XIV-GSR-36
 EXPNO 40
 PROCNO 1

F2 - Acquisition Parameters
 Date_ 20110613
 Time 10.34
 INSTRUM spect
 PULPROG zgpg30
 TD 2048
 SOLVENT CDCl3
 NS 16
 DS 16
 SWH 4084.957 Hz
 FIDRES 1.994613 Hz
 AQ 0.2507232 sec
 RG 327.5
 DW 122.100 usec
 DE 6.00 usec
 TE 298.2 K
 D1 0.0000000 sec
 D2 2.0000000 sec
 D3 0.0000000 sec
 D4 0.5000000 sec
 D5 0.0000000 sec
 D6 0.0002000 sec
 D7 0.0002480 sec
 D8 0.0002480 sec
 DELTA 0.0000000 sec
 TAU 0.2487999 sec

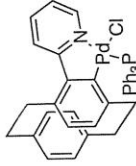
===== CHANNEL f1 =====
 NUC1 1H
 P2 10.00 usec
 PL1 20.00 usec
 PL2 4.00 dB
 PL3 4.00 dB
 SFO1 400.1318806 MHz
 ===== GRADIENT CHANNEL =====
 GPNAM1 SINE.100
 GPNAM2 SINE.100
 GPZ1 40.00 V
 GPZ2 -40.00 V
 P16 1000.00 usec

F1 - Acquisition parameters
 NU0 256
 TD 256
 SFO1 400.1319 MHz
 FIDRES 15.956903 Hz
 PMODE States-TFPI
 =====
 F2 - Processing parameters
 SI 327.5
 SF 400.1300000 MHz
 WDM 2
 SSB 0.00 Hz
 LB 0.00 Hz
 GB 1.40

F1 - Processing parameters
 SI 256
 SF 400.1300000 MHz
 WDM 2
 SSB 0.00 Hz
 LB 0.00 Hz
 GB 0.00 Hz



Ph3P adduct of palladacycle



```

Current Data Parameters
NAME      XIV-GRS-30
EXNO     40
PROCNO   1

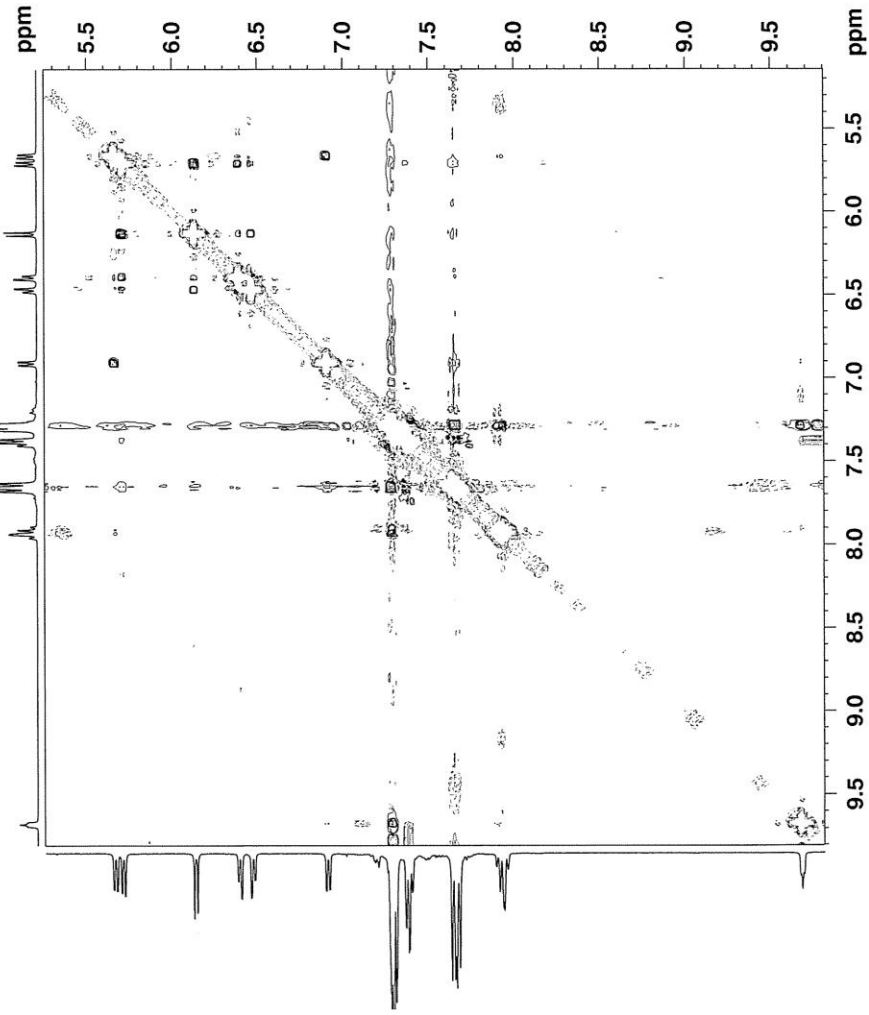
F2 - Acquisition Parameters
Date_    20110613
Time     10.34
INSTRUM  spect
PROBHD   5 mm Multispec
PULPROG  zgpg30
TD       2048
SOLVENT  CDCl3
DS       16
SWH      4084.967 Hz
FIDRES   1.994613 Hz
AQ       0.2507632 sec
RG       655
DM       122.400 usec
DE       6.00 usec
TE       300.2 K
NUC1     13C
NUC2     13C
D1       2.0000000 sec
D8       0.5000000 sec
D16      0.0002000 sec
INVCNT   0.0002420 sec
SFO1     400.131806 MHz
TAU      0.24879959 sec

===== CHANNEL f1 =====
NUC1     13C
P1       10.00 usec
PL1      20.00 dB
PL2      4.00 dB
SFO1     400.131806 MHz

===== GRADIENT CHANNEL =====
GPMNM1   SINE-100
GPMNM2   SINE-100
GFA1     40.00 Hz
GFA2     -40.00 Hz
P16      1000.00 usec

F1 - Acquisition parameters
NUC1     13C
TD       256
SFO1     400.1319 MHz
FIDRES   15.956903 Hz
PROBHD   5 mm
PULPROG  zgpg30
SFO2     400.130000 MHz
WDW      QSSINE
SSB      2
LB       0.00 Hz
GB       0.00 Hz
PC       1.40

F1 - Processing parameters
SI       32768
SF       400.1300000 MHz
WDW      States-TPPI
SSB      0
LB       0.00 Hz
GB       0.00 Hz
  
```





Current Data Parameters
NAME XIII-GUN-8c1d
EXPNO 10
PROCNO 1

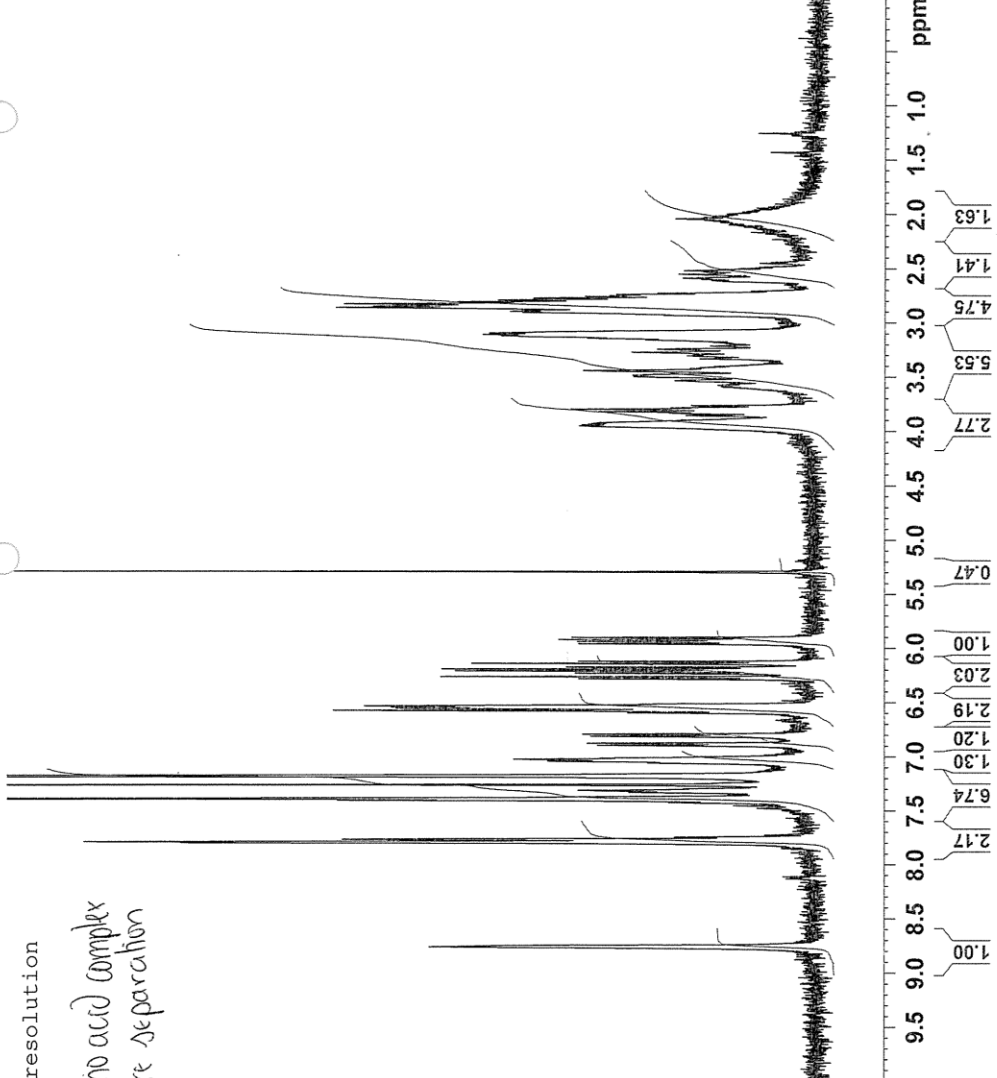
F2 - Acquisition Parameters
Date_ 20100122
Time_ 11.12
INSTRUM spect
PROBHD 5 mm Multinucl
PULPROG zg30
TD 65536
SOLVENT CDCl3
NS 16
DS 2
SWH 8278.146 Hz
FIDRES 0.126314 Hz
AQ 3.9584243 sec
RG 25600
DW 60.00 usec
DE 6.00 usec
TE 298.2 K
D1 1.00000000 sec
TDO 1

===== CHANNEL f1 =====
NUC1 1H
P1 10.00 usec
PL1 4.00 dB
SF01 400.1324710 MHz

F1 - Acquisition parameters
ND0 2
TD 256
SF01 100.6203 MHz
FIDRES 65.104164 Hz
SW 165.639 PPM
FHM0DE Echo-Antiecho

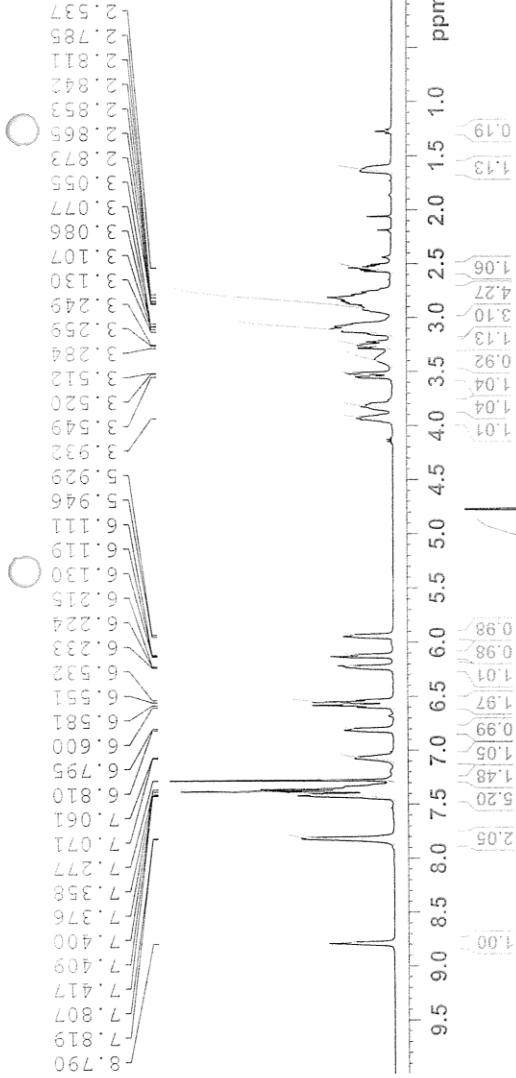
F2 - Processing parameters
SI 32768
SF 400.1300000 MHz
EM 0
WDW 0
SSB 0
LB 0.30 Hz
GB 0
PC 1.00

F1 - Processing parameters
SI 1024
SF 100.6127690 MHz
WDW QSINE
SSB 2
LB 0.30 Hz
GB 0.1



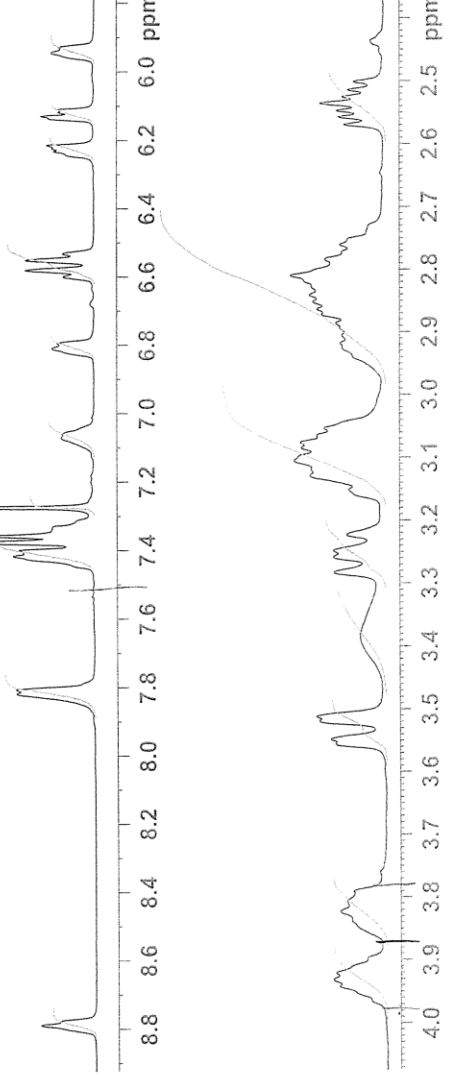
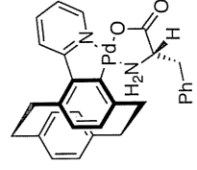
resolution

amino acid complex
before separation



NAME XIII GNR 2422 fncrybal_01d
 EXPNO 10
 PROCNO 1
 Date_ 20110602
 Time 15.33
 INSTRUM spect
 PULPROG 5 mm Multiscale
 TD 65536
 SOLVENT CDCl3
 NS 16
 DS 2
 SWH 8278.146 Hz
 FIDRES 0.126214 Hz
 AQ 3.958243 sec
 RG 327.68
 DW 60.400 usec
 DE 6.00 usec
 TE 298.2 K
 D1 1.00000000 sec
 TD0 1

===== CHANNEL f1 =====
 NUC1 1H
 P1 10.00 usec
 PL 4.00 dB
 SFO1 400.1324710 MHz
 NEO 2
 TD 256
 SFO1 100.6203 MHz
 LFRES 6.004508 Hz
 SF 150.636 ppm
 Echo-AttLecho
 FMODE 32768
 S1
 SF 400.1300000 MHz
 EM
 SSB 0
 LB 0.30 Hz
 GB 0
 SI 1024
 SF 1024
 MC2
 SF 100.6127690 MHz
 WDF
 SSB 2
 LB 0.30 Hz
 GB 0.1



pyr-palladacycle

27 found

28

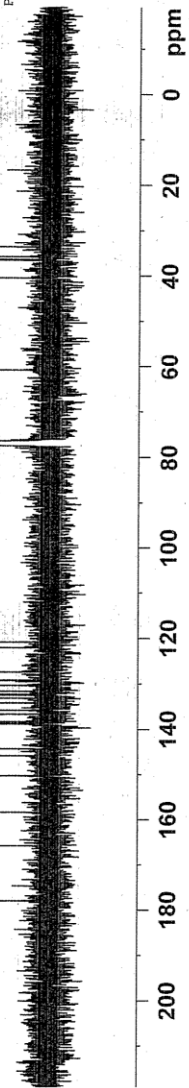
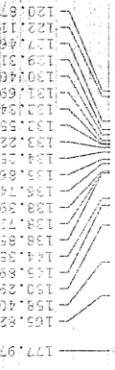
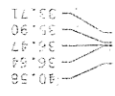
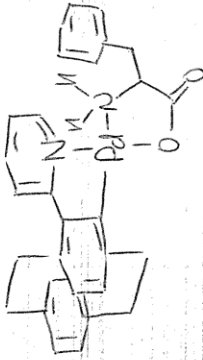
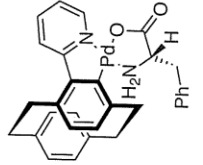


Current Data Parameters
 NAME XIII-GJR-24A2 recryst_old.
 EXPNO 60
 PROCNO 1

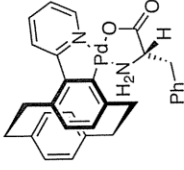
F2 - Acquisition Parameters

Date_ 20110609
 Time 7.45
 INSTRUM spect
 PROBHD 5 mm Multispec
 PULPROG zgpg30
 TD 65536
 SOLVENT CDCl3
 NS 15000
 DS 4
 SWH 23980.814 Hz
 FWH 0.362756 Hz
 AQ 1.362756 sec
 RG 2896.3
 DM 20.850 usec
 DE 6.00 usec
 TE 298.2 K
 D1 2.0000000 sec
 d11 -0.0300000 sec
 T1 1.8399999 sec
 T10 1

CHANNEL F1 13C
 NUC1 F1 12.75 usec
 F1 -6.00 dB
 SF01 100.628298 MHz
 CHANNEL F2
 CPDPRG2 waltz16
 NUC2 1H
 FCPD2 80.00 usec
 F2 4.00 dB
 F12 21.23 dB
 F13 25.00 dB
 SF02 400.1316005 MHz
 F2 - Processing parameters
 S1 32768
 SF 100.6127690 MHz
 WDW EM
 SSB 0
 GB 1.00 Hz
 PC 1.40

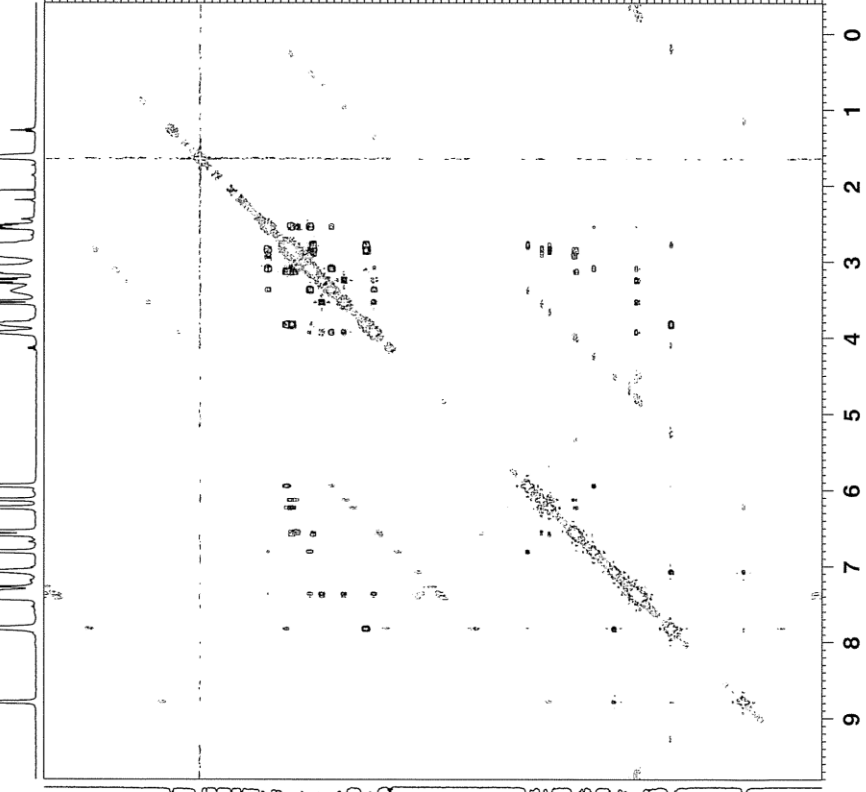


pyr-palladacycle



NAME: XIII-G08-2-01
EXPERNO: 50
PROCNO: 1

ppm



F2 - Acquisition Parameters
Date_ 20110608
Time_ 15.44
INSTRUM spect
PROBHD 5 mm Multinucl
PULPROG zgpg30
TD 2048
SOLVENT CDCl3
NS 18
DS 4
SWH 4084.967 Hz
FIDRES 1.994613 Hz
AQ 0.250722 sec
RG 327.500
DM 122.400 usec
DE 6.00 usec
TE 298.2 K
D0 0.0010967 sec
SFO1 400.131806 MHz
DR 0.5000000 sec
D16 0.00020000 sec
IN0 0.0002480 sec
SFO2 100.628150 MHz
THU 0.2487939 sec

===== CHANNEL F1 =====
NUC1 13C
P2 20.00 usec
PL1 4.00 dB
SFO1 400.131806 MHz
===== GRADIENT CHANNEL =====
GPMAM1 SINE.100
GPMAM2 SINE.100
GPZ1 40.00 usec
GPZ2 40.00 usec
P16 1000.00 usec

F1 - Acquisition Parameters
NUC1 1H
TD 256
SFO1 400.1319 MHz
FIDRES 15.956903 Hz
SW 10.209 PPM
RMODE States-TF1
===== Processing parameters =====
SI 1024
WDW COSINE
SSB 2
LB 0.00 Hz
GB 0
PC 1.40

F1 - Processing parameters
SI 1024
WDW COSINE
SSB 2
LB 0.00 Hz
GB 0



Current Data Parameters
 NAME: XIII-GUN-2102 recryst_old
 EXPRNO: 50
 PROCNO: 1

```

F2 - Acquisition Parameters
Date_   20110608
Time    15.44
INSTRUM spect
PROBHD  5 mm Multinuc
PULPROG mzgpg
TD       65536
SOLVENT CDCl3
NS       18
DS       4
SWH      4084.967 Hz
FIDRES   1.994613 Hz
AQ       0.2507252 sec
RG       327.500
DE       122.400 usec
TE       298.2 K
d0       0.0010967 sec
d1       0.0010967 sec
d2       0.0010967 sec
d8       0.50000000 sec
d16      0.00020000 sec
IN0      0.00024480 sec
SFOUNT   2
ZNU      0.2487959 sec

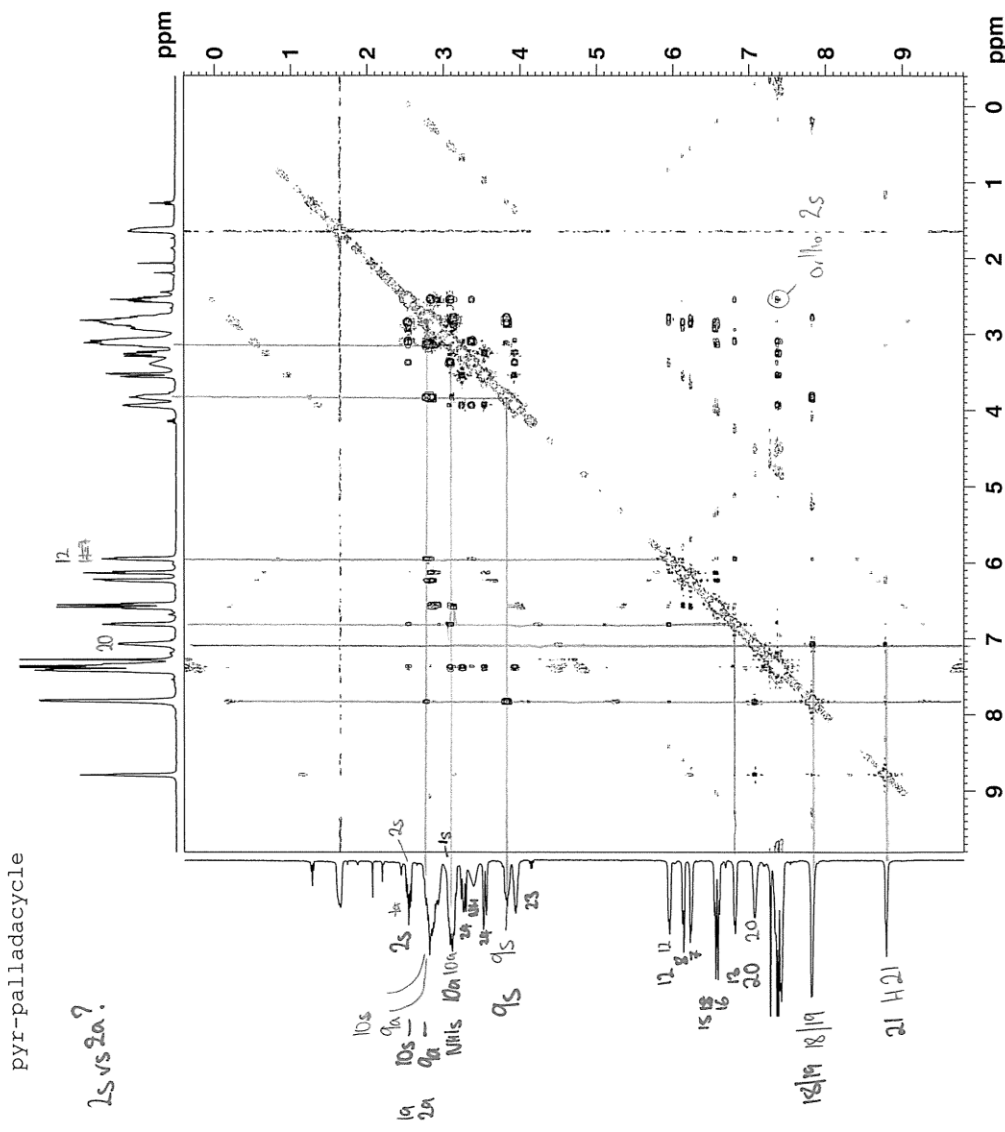
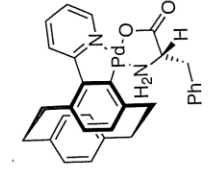
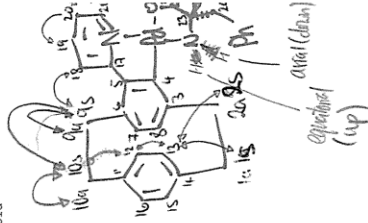
===== CHANNEL f1 =====
NUC1     1H
P2       10.00 usec
PL2      0.00 dB
RF1      400.131806 MHz
SFO1     400.131806 MHz

===== GRADIENT CHANNEL =====
GPNAM1   SINE.100
GPNAM2   SINE.100
GPF1     40.00 usec
GPF2     40.00 usec
PL16     1000.00 usec

F1 - Acquisition parameters
PD0      256
SFO1     400.1319 MHz
FIDRES   15.956903 Hz
SMA       10.209 ppm
FHM08E   States-TF1

F2 - Processing parameters
SI        1024
SF        400.130104 MHz
WDW       EM
SSB       0.00 Hz
GB         2
PC         1.40

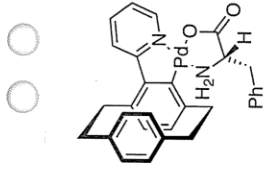
F1 - Processing parameters
SI        1024
SF        400.130104 MHz
WDW       EM
SSB       0.00 Hz
GB         2
PC         1.40
  
```



pyr-palladacycle

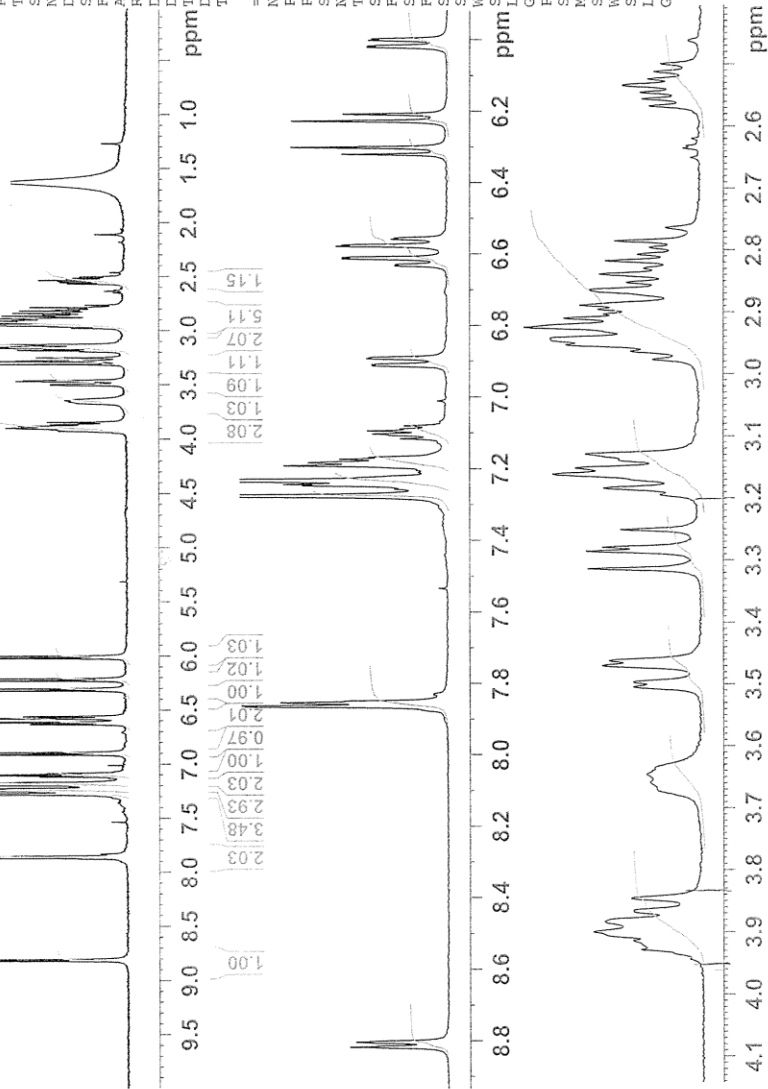
2s vs 2a?

purification of amino acid palladacycle complex



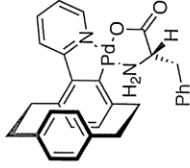
NAME XIII-GJR-8c-re-old
 EXPNO 10
 PROCNO 1
 Date_ 20110609
 Time 11.22
 INSTRUM spect
 PROBHD 5 mm Multinucl
 PULPROG zg30
 TD 65536
 SOLVENT CDCl3
 NS 16
 DS 2
 SMH 8278.146 Hz
 FIDRES 0.1126314 Hz
 AQ 3.9584243 sec
 RG 574.7
 DE 60.400 usec
 TE 298.2 K
 D1 1.00000000 sec
 TD0 1

===== CHANNEL f1 =====
 NUC1 1H
 P1 10.00 usec
 PL1 4.00 dB
 SFO1 400.1324710 MHz
 NDO 2
 TD 256
 SFO1 100.6203 MHz
 FIDRES 65.104164 Hz
 SW 165.639 ppm
 FnmODE Echo-Antiecho
 SI 32768
 SF 400.1300000 MHz
 EM 0
 LB 0.30 Hz
 GB 0
 PC 1.00
 SI 1024
 MC2 echo-antiecho
 SF 100.6127690 MHz
 FnmODE QSSINE
 SSB 2
 LB 0.30 Hz
 GB 0.1



21/22

purification of amino acid palladacycle complex



Current Data Parameters
 NAME XIII-GJR-8c-re-old
 EXPNO 40
 PROCNO 1

F2 - Acquisition Parameters
 Date 20110609
 Time 17.33

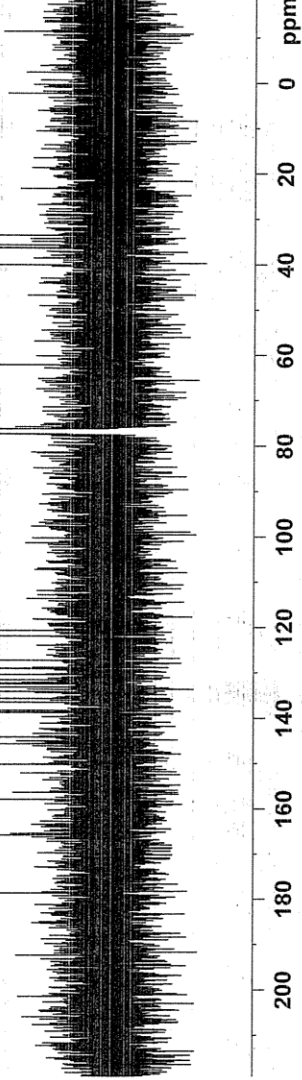
INSTRUM spect
 PROBHD 5 mm Multinucl
 PULPROG zgpg30
 TD 65536
 SOLVENT CCl3
 NS 15000

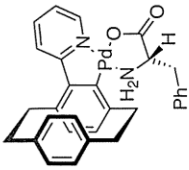
DS 4
 SFO1 23980.814 Hz
 FIDRES 0.365918 Hz
 AQ 1.3664756 sec
 RG 5160.6
 DW 20.850 usec
 DE 6.00 usec
 TE 298.2 K
 D1 2.0000000 sec
 d11 0.0300000 sec
 DELTA 1.8999998 sec
 TDO 1

===== CHANNEL f1 =====
 NUC1 13C
 P1 12.75 usec
 PL1 -6.00 dB
 SFO1 100.6228298 MHz

===== CHANNEL f2 =====
 CDEPRG2 waltz16
 NUC2 1H
 PCPD2 80.00 usec
 PL2 4.00 dB
 PL12 21.23 dB
 PL13 25.00 dB
 SFO2 400.1316005 MHz

F2 - Processing parameters
 SI 32768
 SF 100.6127690 MHz
 WDW EM
 SSB 0
 LB 1.00 Hz
 GB 0
 FC 1.40





purification of amino acid palladacycle complex

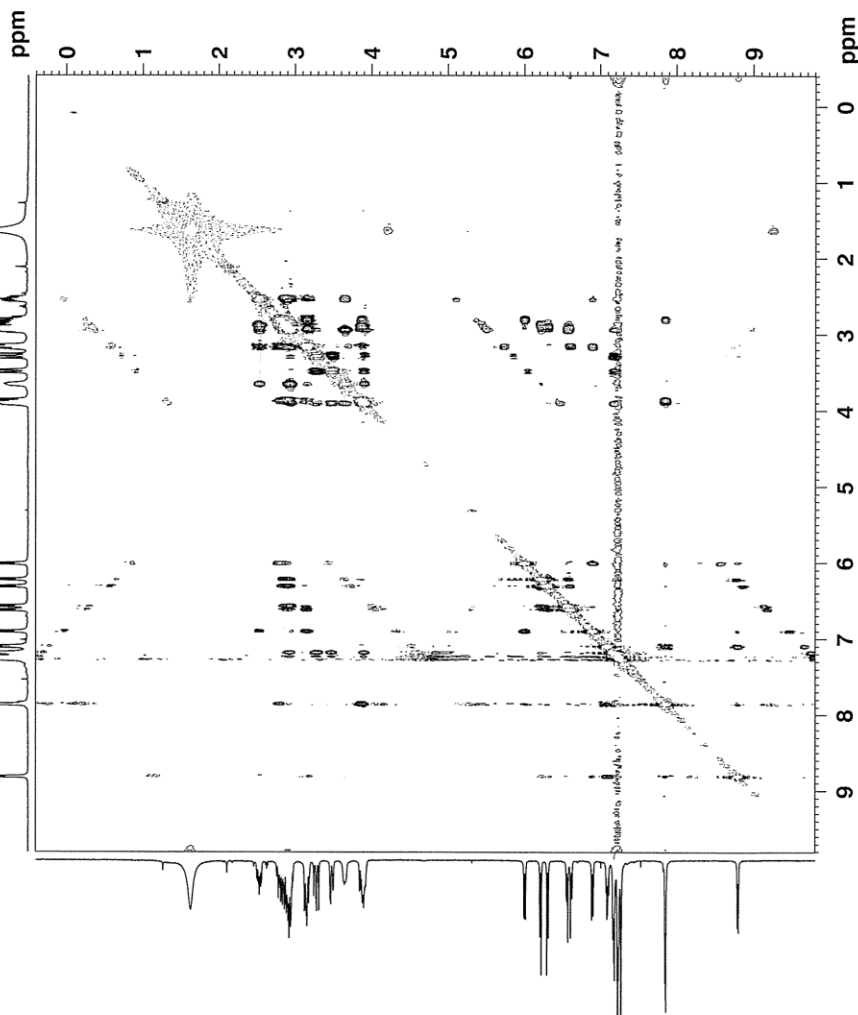
Current Data Parameters
 X11F-GUN-95-old
 EXPNO 30
 PROCNO 1

F2 - Acquisition Parameters
 Date_ 20110609
 Time_ 15.52
 INSTRUM spect
 PULPROG 5 mm Multinuc1
 TD 2048
 SOLVENT CDCl3
 NS 18
 SFO1 4084.967 Hz
 FIDRES 1.994613 Hz
 AQ 0.2507252 sec
 RG 229.600
 DE 6.00 usec
 TE 298.2 K
 DD 0.0010967 sec
 DQ 0.0000000 sec
 DB 0.5000000 sec
 DL6 0.00020000 sec
 INO 0.00024480 sec
 SFO2 100.626155 MHz
 ZNU 0.2487959 sec

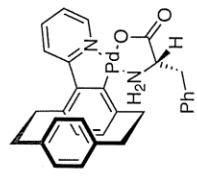
===== CHANNEL F1 =====
 NUC1 1H
 P2 10.00 usec
 PL1 20.00 usec
 PL2 4.00 dB
 PL3 4.00 dB
 SFO1 400.1318806 MHz
 ===== GRADIENT CHANNEL =====
 GPNAM1 SINE.100
 GPNAM2 SINE.100
 GPC1 40.00
 GPC2 40.00
 P16 1000.00 usec

F1 - Acquisition parameters
 F1 400.1318806 MHz
 TD 256
 SFO1 400.1319 MHz
 FIDRES 15.956903 Hz
 SFO2 100.626155 MHz
 SFO3 100.626155 MHz
 SFO4 100.626155 MHz
 SFO5 100.626155 MHz
 SFO6 100.626155 MHz
 SFO7 100.626155 MHz
 SFO8 100.626155 MHz
 SFO9 100.626155 MHz
 SFO10 100.626155 MHz
 SFO11 100.626155 MHz
 SFO12 100.626155 MHz
 SFO13 100.626155 MHz
 SFO14 100.626155 MHz
 SFO15 100.626155 MHz
 SFO16 100.626155 MHz
 SFO17 100.626155 MHz
 SFO18 100.626155 MHz
 SFO19 100.626155 MHz
 SFO20 100.626155 MHz
 SFO21 100.626155 MHz
 SFO22 100.626155 MHz
 SFO23 100.626155 MHz
 SFO24 100.626155 MHz
 SFO25 100.626155 MHz
 SFO26 100.626155 MHz
 SFO27 100.626155 MHz
 SFO28 100.626155 MHz
 SFO29 100.626155 MHz
 SFO30 100.626155 MHz
 SFO31 100.626155 MHz
 SFO32 100.626155 MHz
 SFO33 100.626155 MHz
 SFO34 100.626155 MHz
 SFO35 100.626155 MHz
 SFO36 100.626155 MHz
 SFO37 100.626155 MHz
 SFO38 100.626155 MHz
 SFO39 100.626155 MHz
 SFO40 100.626155 MHz
 SFO41 100.626155 MHz
 SFO42 100.626155 MHz
 SFO43 100.626155 MHz
 SFO44 100.626155 MHz
 SFO45 100.626155 MHz
 SFO46 100.626155 MHz
 SFO47 100.626155 MHz
 SFO48 100.626155 MHz
 SFO49 100.626155 MHz
 SFO50 100.626155 MHz
 SFO51 100.626155 MHz
 SFO52 100.626155 MHz
 SFO53 100.626155 MHz
 SFO54 100.626155 MHz
 SFO55 100.626155 MHz
 SFO56 100.626155 MHz
 SFO57 100.626155 MHz
 SFO58 100.626155 MHz
 SFO59 100.626155 MHz
 SFO60 100.626155 MHz
 SFO61 100.626155 MHz
 SFO62 100.626155 MHz
 SFO63 100.626155 MHz
 SFO64 100.626155 MHz
 SFO65 100.626155 MHz
 SFO66 100.626155 MHz
 SFO67 100.626155 MHz
 SFO68 100.626155 MHz
 SFO69 100.626155 MHz
 SFO70 100.626155 MHz
 SFO71 100.626155 MHz
 SFO72 100.626155 MHz
 SFO73 100.626155 MHz
 SFO74 100.626155 MHz
 SFO75 100.626155 MHz
 SFO76 100.626155 MHz
 SFO77 100.626155 MHz
 SFO78 100.626155 MHz
 SFO79 100.626155 MHz
 SFO80 100.626155 MHz
 SFO81 100.626155 MHz
 SFO82 100.626155 MHz
 SFO83 100.626155 MHz
 SFO84 100.626155 MHz
 SFO85 100.626155 MHz
 SFO86 100.626155 MHz
 SFO87 100.626155 MHz
 SFO88 100.626155 MHz
 SFO89 100.626155 MHz
 SFO90 100.626155 MHz
 SFO91 100.626155 MHz
 SFO92 100.626155 MHz
 SFO93 100.626155 MHz
 SFO94 100.626155 MHz
 SFO95 100.626155 MHz
 SFO96 100.626155 MHz
 SFO97 100.626155 MHz
 SFO98 100.626155 MHz
 SFO99 100.626155 MHz
 SFO100 100.626155 MHz

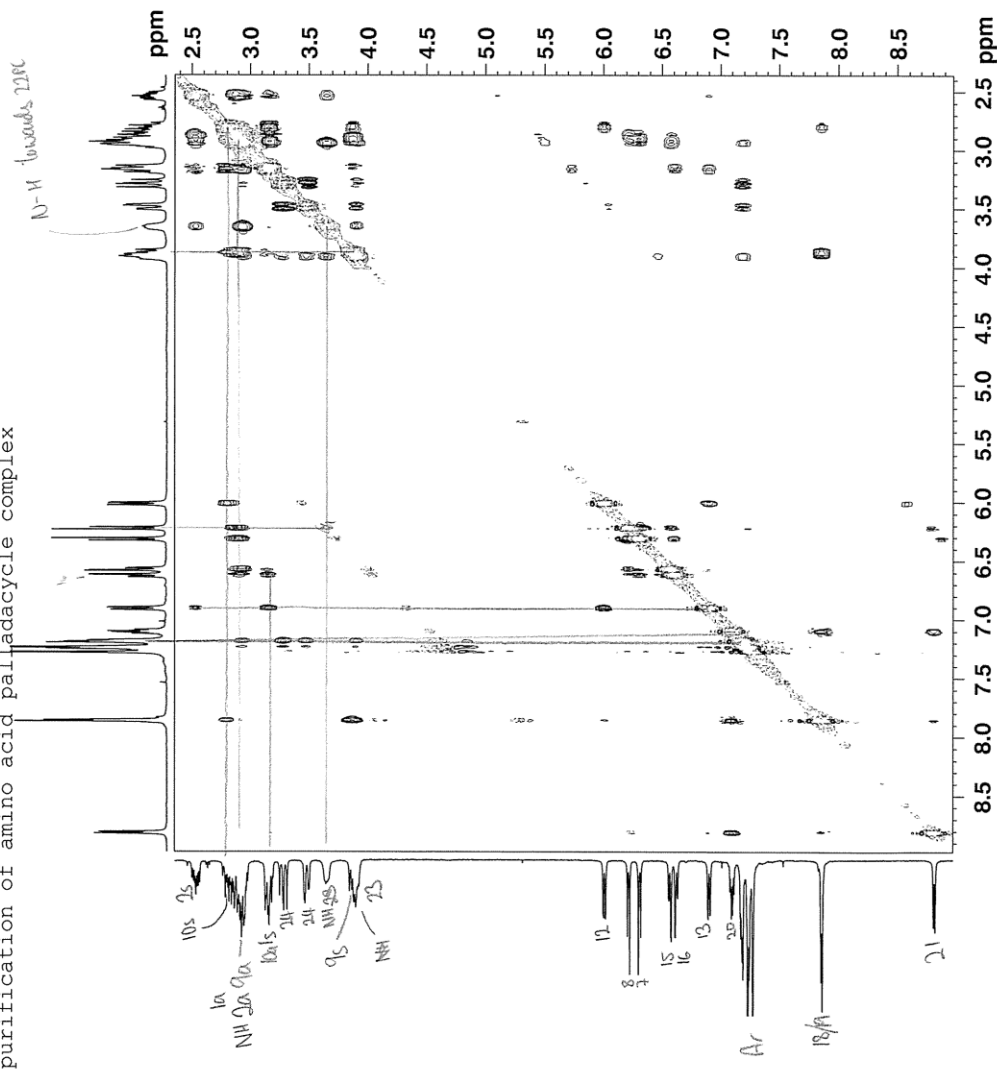
F2 - Processing parameters
 SI 1024
 SF 400.1301024 MHz
 WDW COSY
 SSB 2
 LB 0.00 Hz
 GB 0
 PC 1.40
 F1 - Processing parameters
 SI 1024
 SF 400.1301024 MHz
 WDW COSY
 SSB 2
 LB 0.00 Hz
 GB 0



Yes



purification of amino acid palladacycle complex



Current Data Parameters
 Name: X111-QCP-00-001d
 EXPNO: 30
 PROCNO: 1

F2 - Acquisition Parameters
 Date_ Time: 20110609 15.52
 INSTRUM: spect
 PULPROG: 5 mm Multinuc1
 FIDPROC: nosy2018
 TD: 65536
 SOLVENT: CDCl3
 NS: 18
 DS: 4
 SWH: 4084.967 Hz
 FIDRES: 1.994613 Hz
 AQ: 0.2507252 sec
 RG: 327.500
 FM: 122.600 usec
 DE: 6.00 usec
 TE: 298.2 K
 DD: 0.0010967 sec
 DECOUPL: 13C
 DR: 0.50000000 sec
 D16: 0.00020000 sec
 INO: 0.00024480 sec
 F1CNT: 1
 ZNU: 0.24879959 sec

===== CHANNEL f1 =====
 NUC1: 1H
 P2: 10.00 usec
 PL1: 20.00 usec
 PL2: 4.00 dB
 SF01: 400.131806 MHz

===== GRADIENT CHANNEL =====
 GPNAM1: SINE.100
 GPNAM2: SINE.100
 GRP1: 40.00 usec
 GRP2: 40.00 usec
 PL16: 1000.00 usec

F1 - Acquisition parameters
 TD: 65536
 SF01: 400.1319 MHz
 FIDRES: 15.956903 Hz
 SFO2: 100.626180 MHz
 SWH02: 100.626180 MHz
 F1MODE: States-rf1f1

F2 - Processing parameters
 SI: 32768
 SF: 400.130022 MHz
 WDW: COSYNE
 SSB: 2
 LB: 0.00 Hz
 GB: 0.00 Hz
 PC: 1.40

F1 - Processing parameters
 SI: 65536
 SF: 400.130022 MHz
 SF2: 400.130000 MHz
 WDW: COSYNE
 SSB: 2
 GB: 0.00 Hz



Current Data Parameters
NAME XIV-GJR-31Co13A
EXPNO 20
PROCNO 1

F2 - Acquisition Parameters
Date_ 20111010
Time 10.43
INSTRUM spect
PROBHD 5 mm Multinucl
PULPROG zg30
TD 65536
SOLVENT CDCl3
NS 16
DS 2
SWH 8278.146 Hz
FIDRES 0.22634 Hz
AQ 3.95943 sec
RG 912.3
DM 60.400 usec
DE 6.000 usec
TE 308.2 K
D1 1.00000000 sec
TD0 1

CHANNEL f1
NUC1 1H
PI 10.00 usec
PL1 4.00 dB
SFO1 400.1324710 MHz

F1 - Acquisition parameters
NDO 2
TD 256
SFO1 100.6203 MHz
FIDRES 65.10464 Hz
SM 163.639 ppm
RMODE Echo-Antiecho

F2 - Processing parameters
SI 32768
SF 400.1300000 MHz
WDW EM
SSB 0
LB 0.30 Hz
GB 0
PC 1.00

F1 - Processing parameters
SI 1024
MC2 echo-antiecho
SFO1 100.6127690 MHz
WDW QSI
SSB 2
LB 0.30 Hz
GB 0.1

Purity bromination - redry

