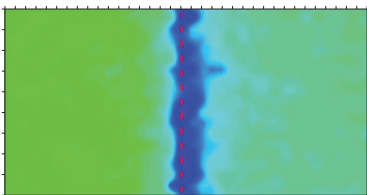
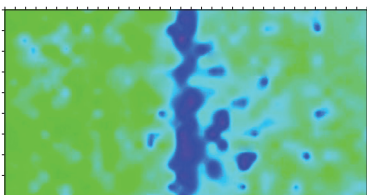
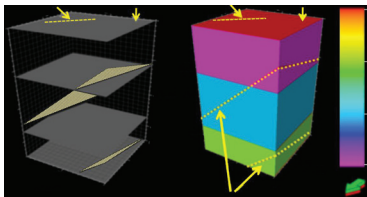
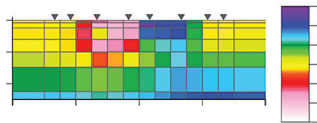
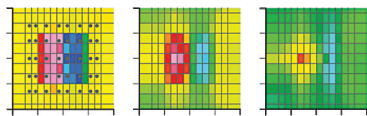


EXPLORATION GEOPHYSICS

www.publish.csiro.au/journals/eg

10.1071/EGv44n3toc



145–155 Three-dimensional magnetotelluric inversion using a heterogeneous smoothness-constrained least-squares method

Tateyuki Negi, Hideki Mizunaga, Koichi Asamori and Koji Umeda

156–166 A 21-point finite difference scheme for 2D frequency-domain elastic wave modelling

Bingluo Gu, Guanghe Liang and Zhiyuan Li

167–175 Using reverse vertical seismic profiling (RVSP) to characterise the subsurface fracture system of the Seokmo Island geothermal field, Republic of Korea

Bona Kim, Joongmoo Byun, Soon Jee Seol, Kwon Gyu Park and Tae Jong Lee

176–184 Forward modelling and inversion of self-potential anomalies caused by 2D inclined sheets

Mohamad Sadegh Roudsari and Ali Beitollahi

185–191 A new approach to semi-infinite thin slab depth determination from second moving average residual gravity anomalies

El-Sayed M. Abdelrahman and Khalid S. Essa

192–198 Optimisation of temperature observational well selection

Israel M. Kutasov and Lev V. Eppelbaum

199–205 The application of Monte Carlo modelling to downhole total-count logging of uranium: part II – high grade mineralisation

Bruce Dickson and Geoff Beckitt

Papers from the 2011 Western Australia Geothermal Energy Symposium (WAGES)

206–214 Radiogenic heat generation in the Darling Range, Western Australia

Mike F. Middleton

215–227 Geophysical techniques for low enthalpy geothermal exploration in New Zealand

Supri Soengkono, Chris Bromley, Robert Reeves, Stewart Bennie and Duncan Graham



Australian Society of Exploration Geophysicists



Society of Exploration Geophysicists of Japan



Korean Society of Earth and Exploration Geophysicists