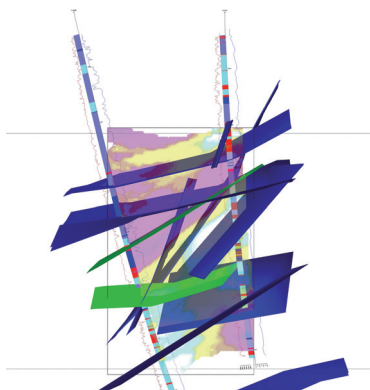
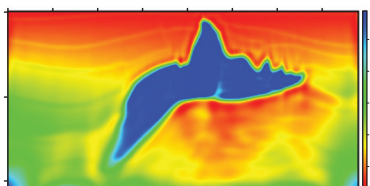
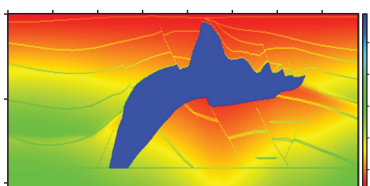
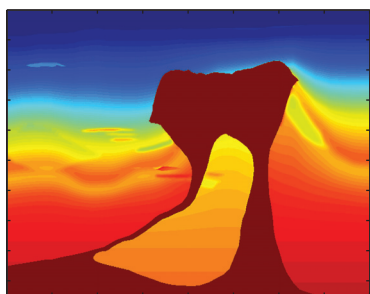


EXPLORATION GEOPHYSICS

www.publish.csiro.au/journals/eg

10.1071/EGv46n2toc



141–152 Radiowave imaging research (RIM) for determining the electrical conductivity of the rock in borehole section OL-KR4–OL-KR10 at Olkiluoto, Finland

Arto Korpisalo and Eero Heikkinen

153–158 Gaussian beam prestack depth migration in heterogeneous transversely isotropic media

Jianguang Han and Yun Wang

159–167 Iterative reweighted least M-estimate AVO inversion

Yang Liu, Jiashu Zhang and Guangmin Hu

168–177 Memoryless quasi-Newton (MLQN) method for 2D acoustic full waveform inversion

Cai Liu, Fengxia Gao, Xuan Feng, Yang Liu and Qianci Ren

178–183 Implementation of adaptive edge-preserving smoothing regularisation technique for simultaneous multi-frequency full waveform inversion

Yunhui Park and Sukjoon Pyun

184–191 Estimating primaries from passive seismic data

Hao Cheng, De-Li Wang, Fei Feng and Heng Zhu

192–205 Changes in P-wave velocity with different full waveform sonic transmitter centre frequency

Majed Almalki, Brett Harris and J. Christian Dupuis

206–212 Comparison of numerical dispersion in acoustic finite-difference algorithms

Wen-Quan Liang, Yan-Fei Wang and Chang-Chun Yang

213–215 Comments on: Christensen, N., and Lawrie, K., 2012. Resolution analyses for selecting an appropriate airborne electromagnetic (AEM) system, *Exploration Geophysics*, 43, 213–227

Adam Smiarowski and Shane Mulè

216–221 Response to comments by Adam Smiarowski and Shane Mulè on: Christensen, N., and Lawrie, K., 2012. Resolution analyses for selecting an appropriate airborne electromagnetic (AEM) system, *Exploration Geophysics*, 43, 213–227

Niels B. Christensen and Ken Lawrie



Australian Society of Exploration Geophysicists



Society of Exploration Geophysicists of Japan



Korean Society of Earth and Exploration Geophysicists