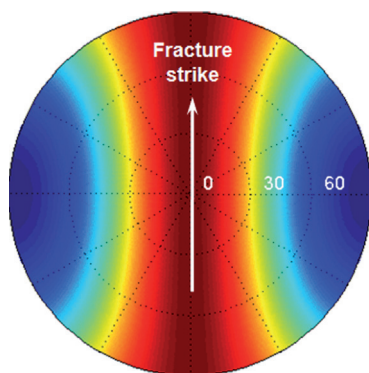
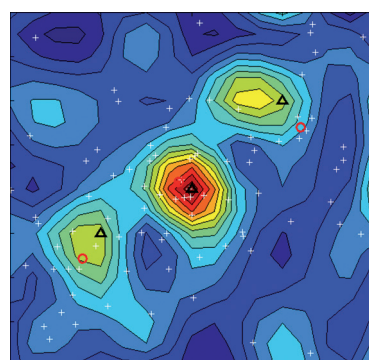
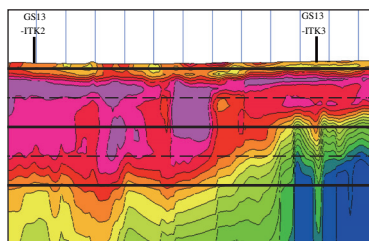


EXPLORATION GEOPHYSICS

www.publish.csiro.au/journals/eg

10.1071/EGv48n1toc



Special Section: Geophysical Surveys After the Great Eastern Japan Earthquake

- 1–15 S-wave reflection and surface wave surveys in liquefaction affected areas: a case study of the Hinode area, Itako, Ibaraki, Japan**
Toshiyuki Yokota, Motoharu Jinguuji, Yoshiaki Yamanaka and Kazunori Murata
- 16–27 Shallow subsurface structure estimated from dense aftershock records and microtremor observations in Furukawa district, Miyagi, Japan**
Hiroyuki Goto, Hitoshi Mitsunaga, Masayuki Inatani, Kahori Iiyama, Koji Hada, Takaaki Ikeda, Toshiyasu Takaya, Sayaka Kimura, Ryohei Akiyama, Sumio Sawada and Hitoshi Morikawa
- 28–36 A case study of liquefaction risk analysis based on the thickness and depth of the liquefaction layer using CPT and electric resistivity data in the Hinode area, Itako City, Ibaraki Prefecture, Japan**
Motoharu Jinguuji and Selcuk Toprak

Regular Papers

- 37–48 Initialising reservoir models for history matching using pre-production 3D seismic data: constraining methods and uncertainties**
Mohammad Emami Niri and David E. Lumley
- 49–55 A seismic diffraction extraction method for the study of discontinuous geologies using a regularisation algorithm**
Caixia Yu, Yanfei Wang and Jingtao Zhao
- 56–66 Azimuthal AVO signatures of fractured poroelastic sandstone layers**
Zhiqi Guo and Xiang-Yang Li
- 67–75 Automatic detection of multiple UXO-like targets using magnetic anomaly inversion and self-adaptive fuzzy c-means clustering**
Gang Yin, Yingtang Zhang, Hongbo Fan, Guoquan Ren and Zhining Li
- 76–93 Comparison of artificial absorbing boundaries for acoustic wave equation modelling**
Yingjie Gao, Hanjie Song, Jinhai Zhang and Zhenxing Yao



Australian Society of Exploration Geophysicists



Society of Exploration Geophysicists of Japan



Korean Society of Earth and Exploration Geophysicists