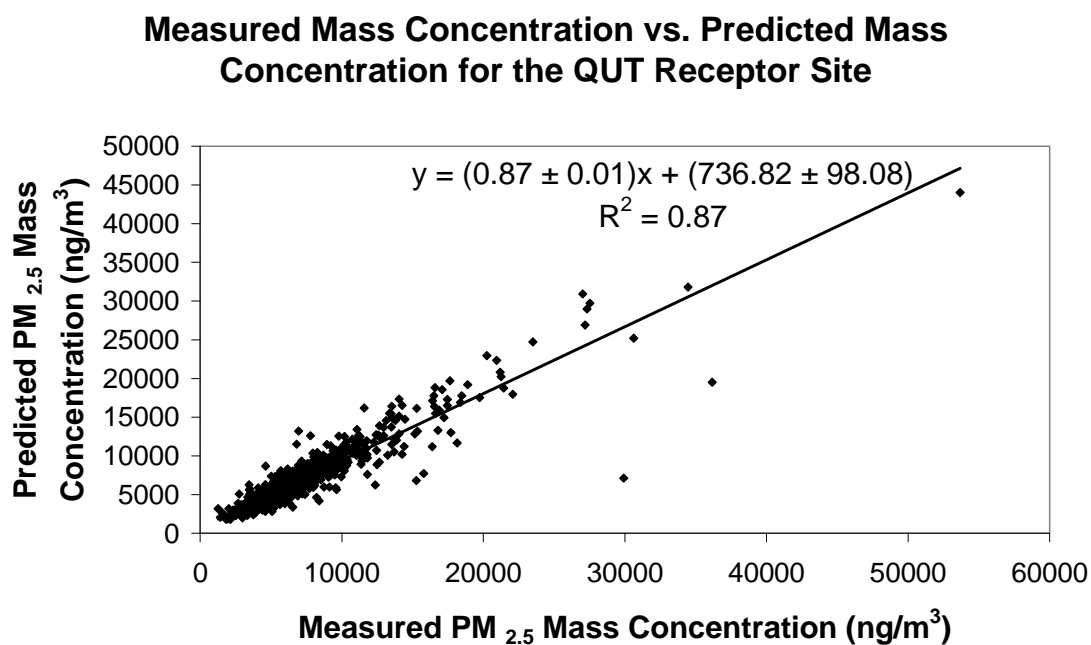


## Accessory publication

**Multi-criteria ranking and source apportionment of fine particulate matter in Brisbane, Australia***Adrian J. Friend<sup>A</sup> and Godwin A. Ayoko<sup>A,B</sup>*

<sup>A</sup>International Laboratory for Air Quality and Health, School of Physical and Chemical Sciences, Queensland University of Technology, 2 George Street, GPO Box 2434, QLD 4001, Australia.

<sup>B</sup>Corresponding author. Email: g.ayoko@qut.edu.au



**Fig. 1.** Measured *v.* predicted PM<sub>2.5</sub> mass concentration for the site.

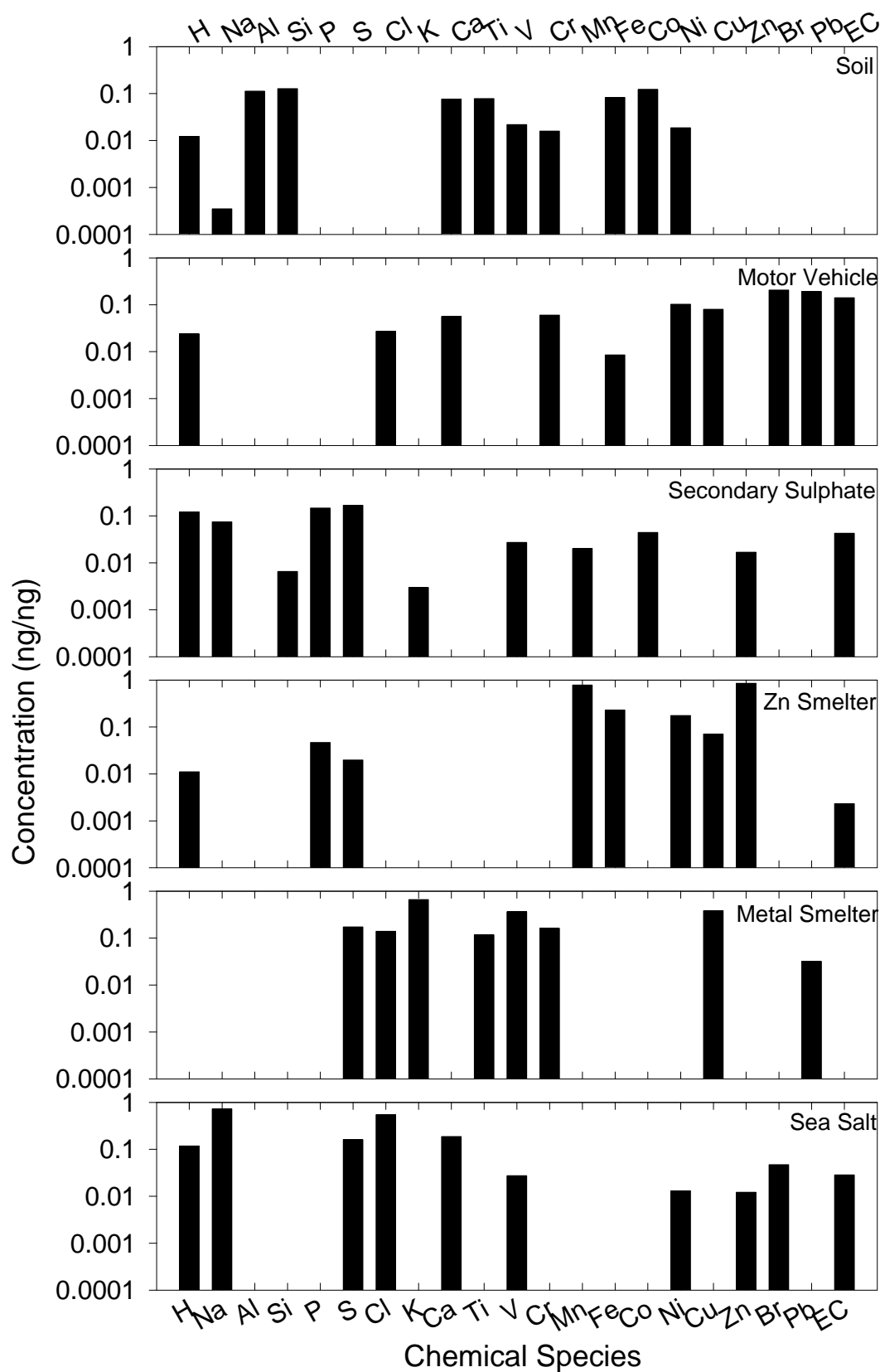


Fig. 2. Source profile plot for the PCA/APCS analysis of the QUT receptor site.

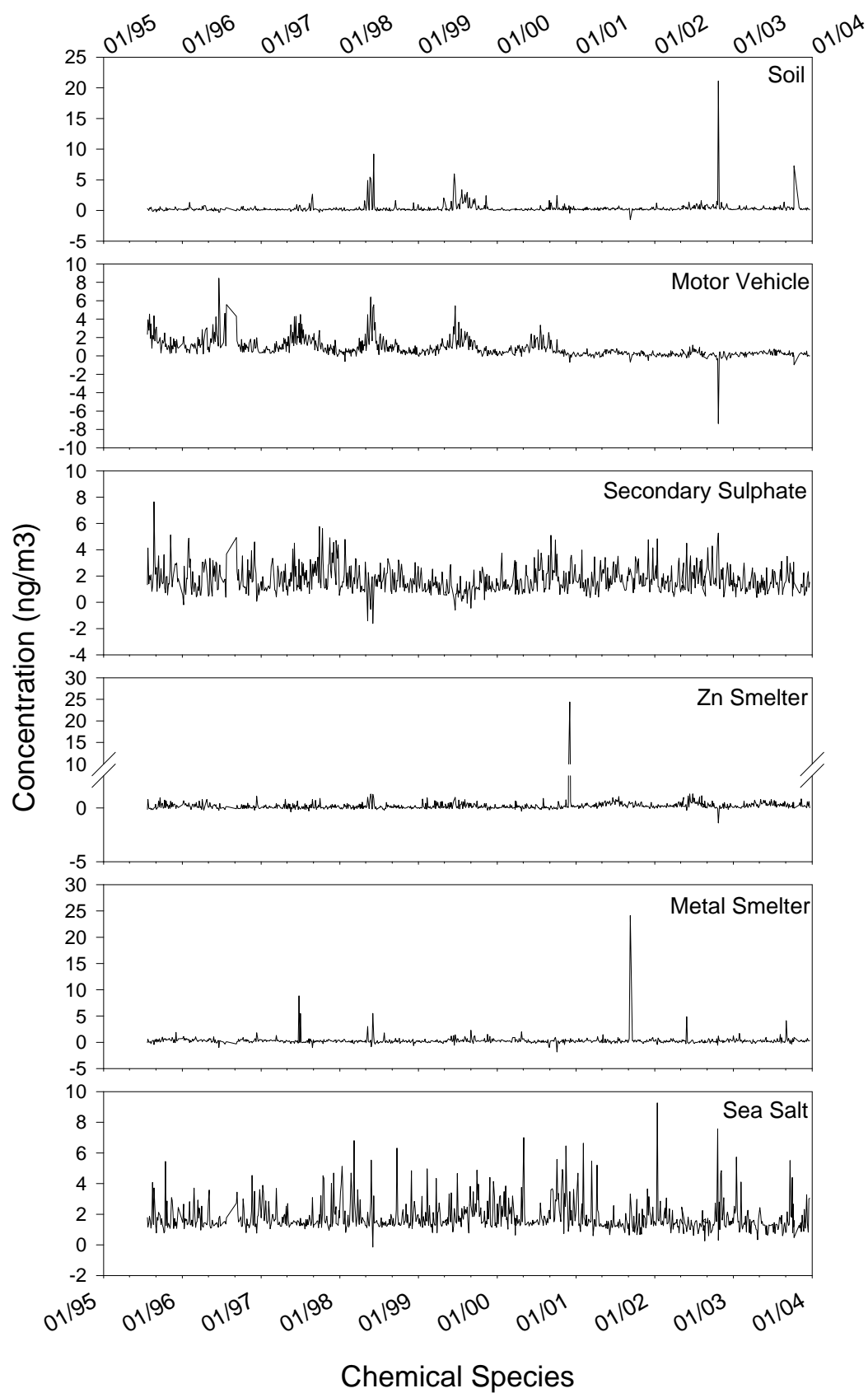
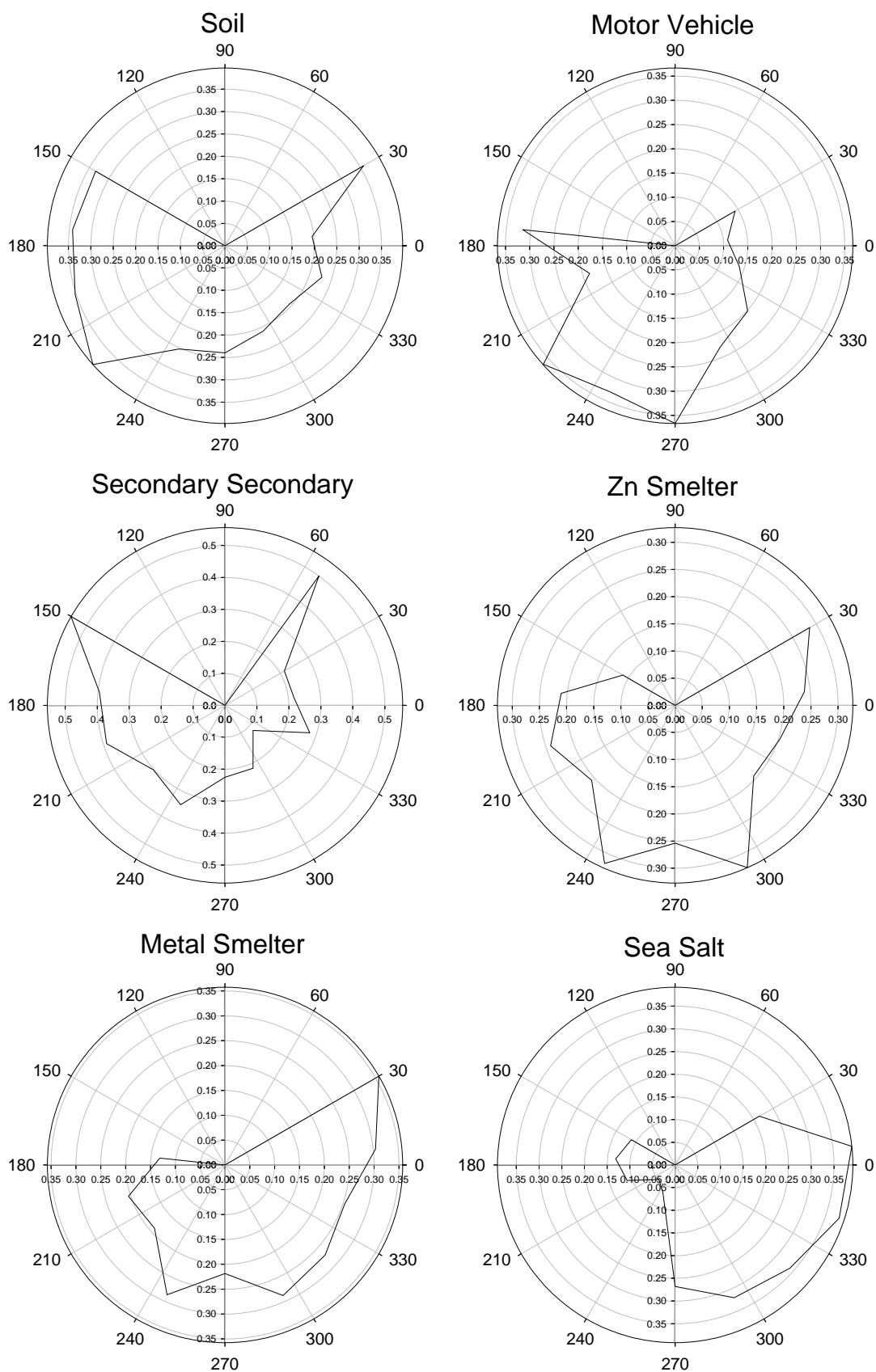


Fig. 3. Source contribution plot for PCA/APCS analysis of QUT receptor site.



**Fig. 4.** CPF results based on the source contribution obtained from the PCA/APCS analysis.

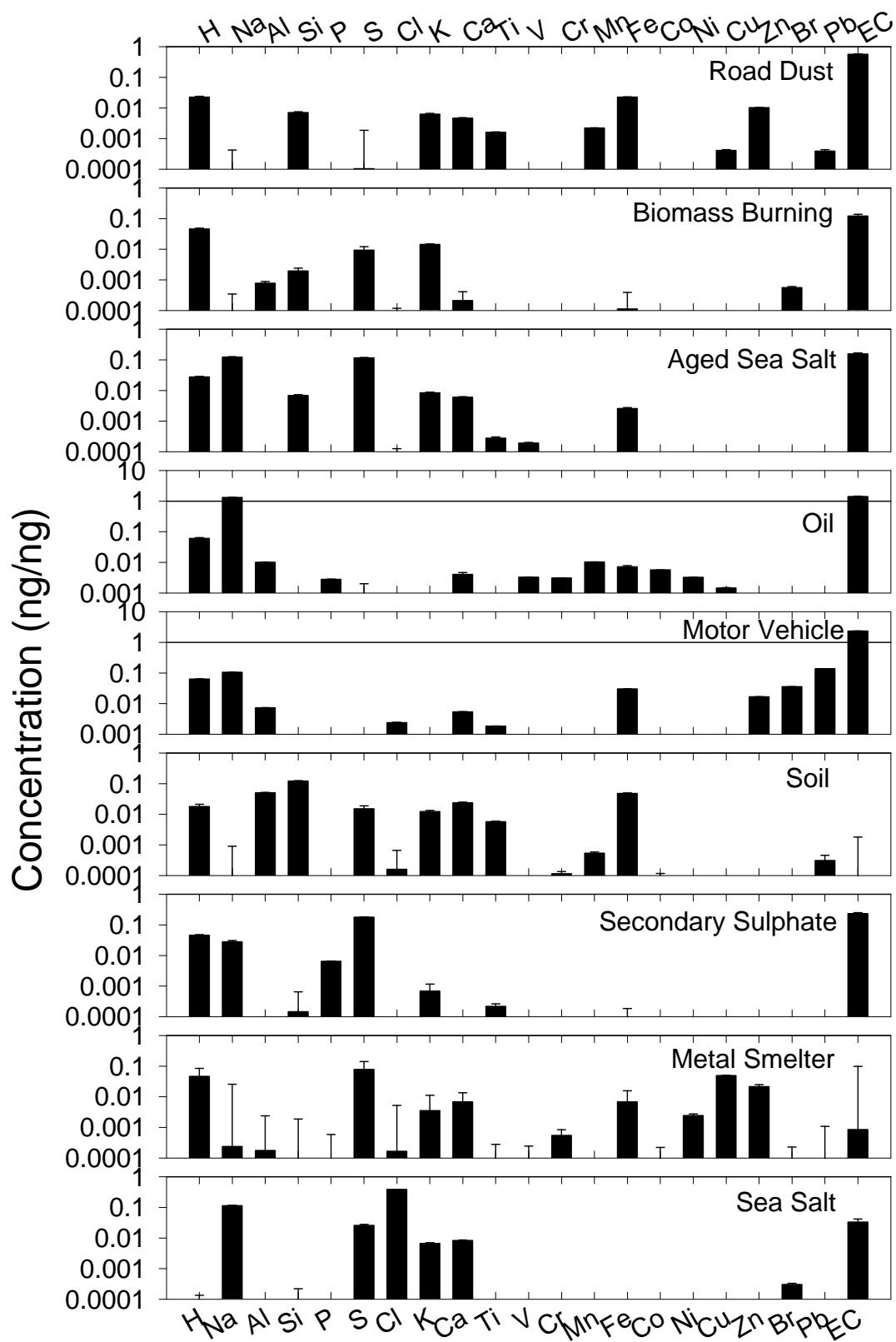
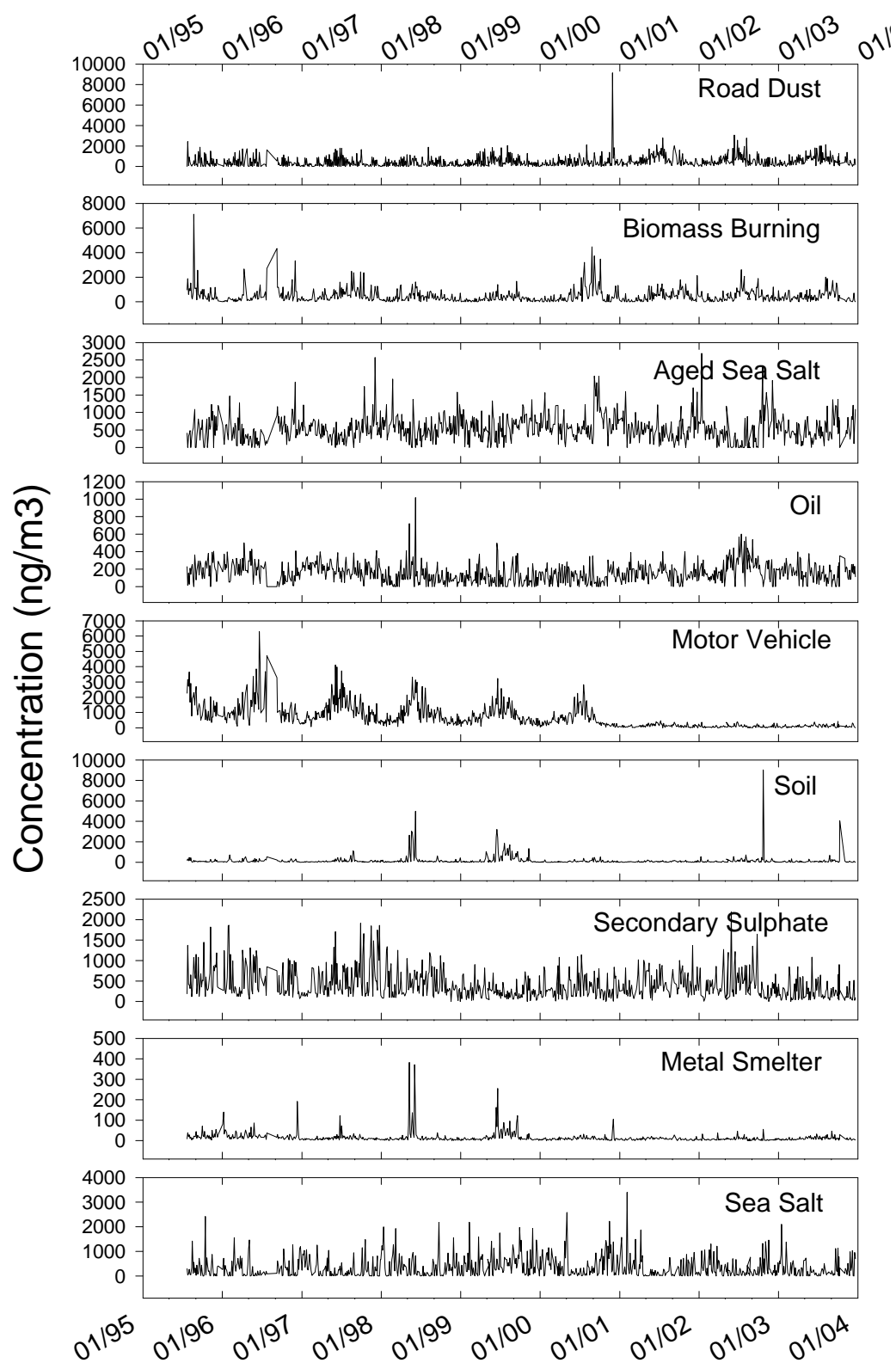


Fig. 5. Source profile plot for the PMF analysis. X-axis denotes chemical species



**Fig. 6.** Source contribution plots for PMF analysis. X-axis denotes sampling date.

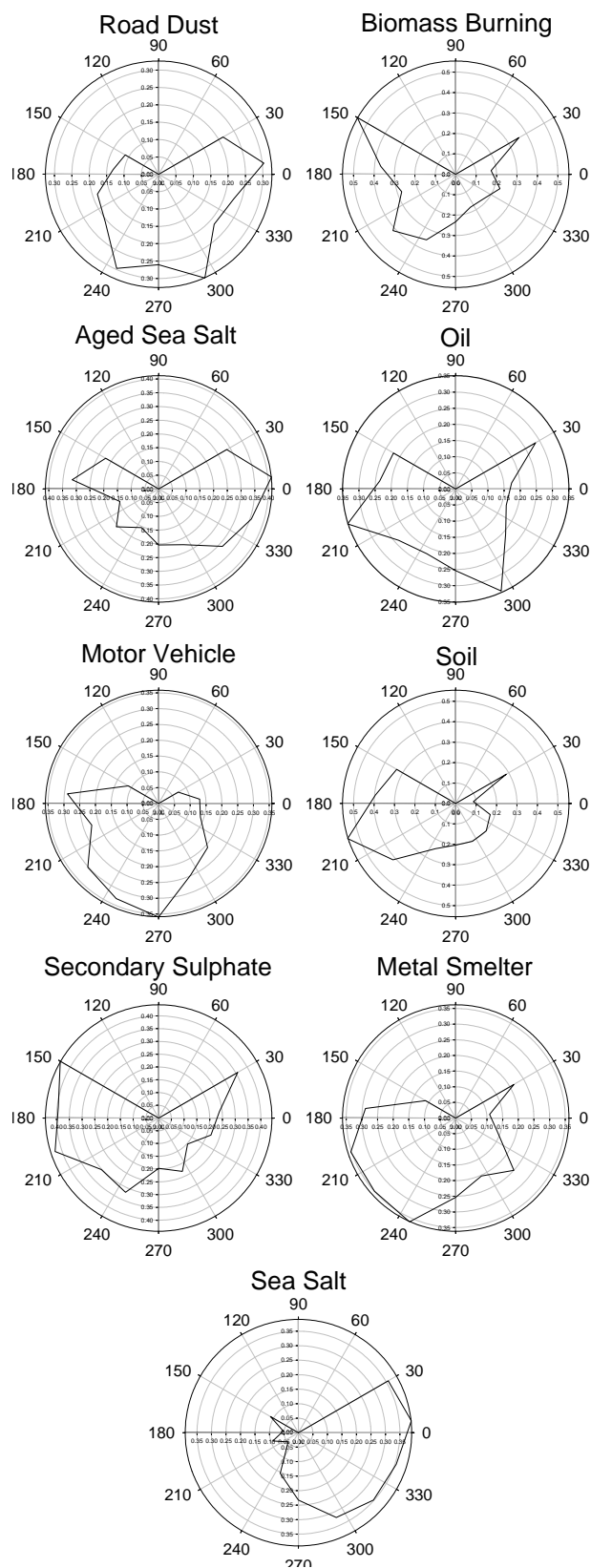


Fig. 7. CPF results based on the source contribution obtained from PMF analysis.