

Accessory publication

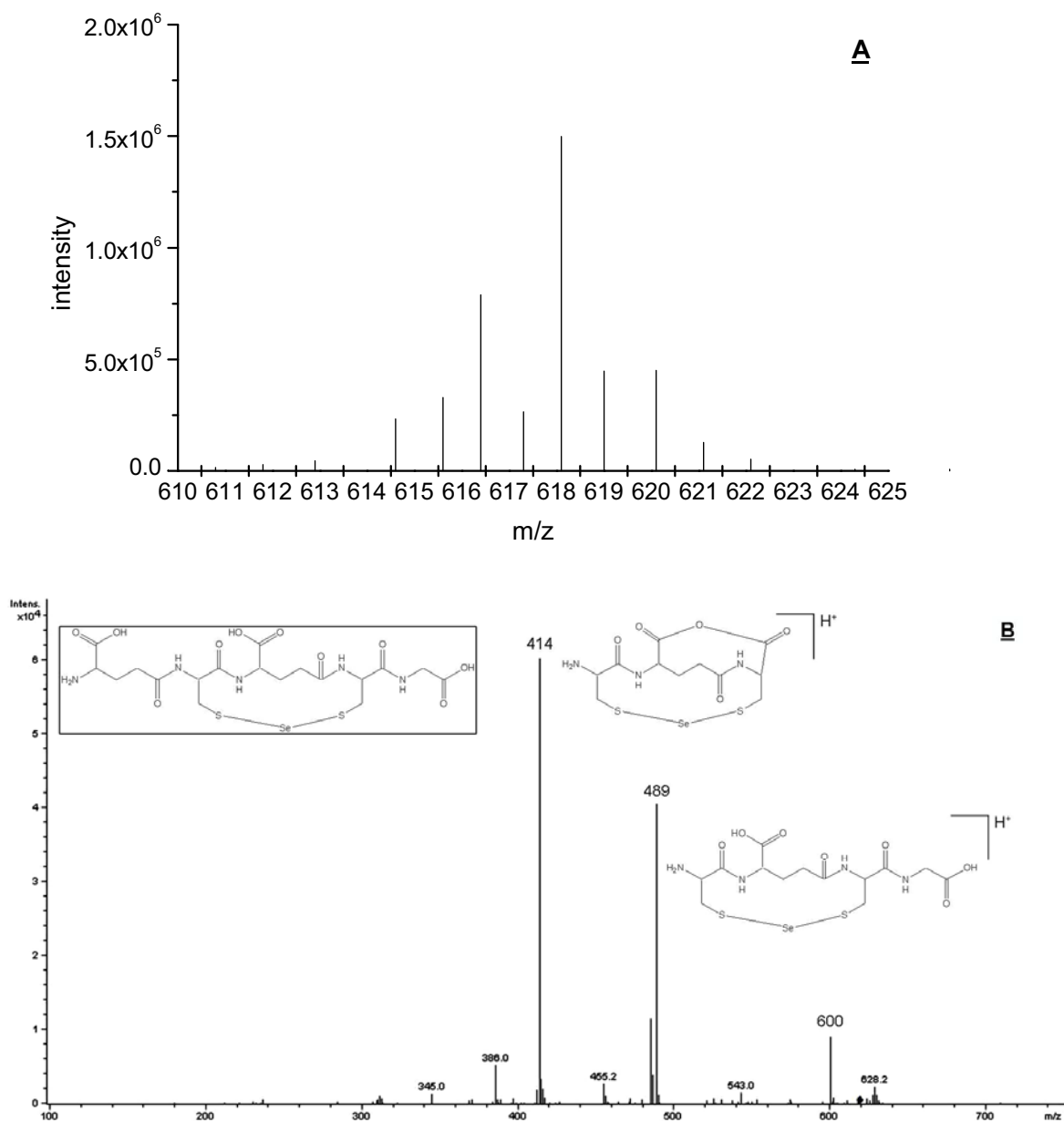
Selenite enhances arsenate toxicity in *Thunbergia alata*Katharina Bluemlein,^A Elizabeth Klimm,^A Andrea Raab^A and Jörg Feldmann^{A,B}^AUniversity of Aberdeen, College of Physical Sciences, tesla (Trace Element Speciation Laboratory), Meston Walk, Aberdeen AB24 3UE, Scotland, UK.^BCorresponding author. Email: j.feldmann@abdn.ac.uk

Fig. A1. ES-MS spectrum of the Se^{II}PC₂ complex detected in *T. alata* root extract (**A**). ES-MS/MS spectrum of said Se^{II}PC₂ complex (**B**).

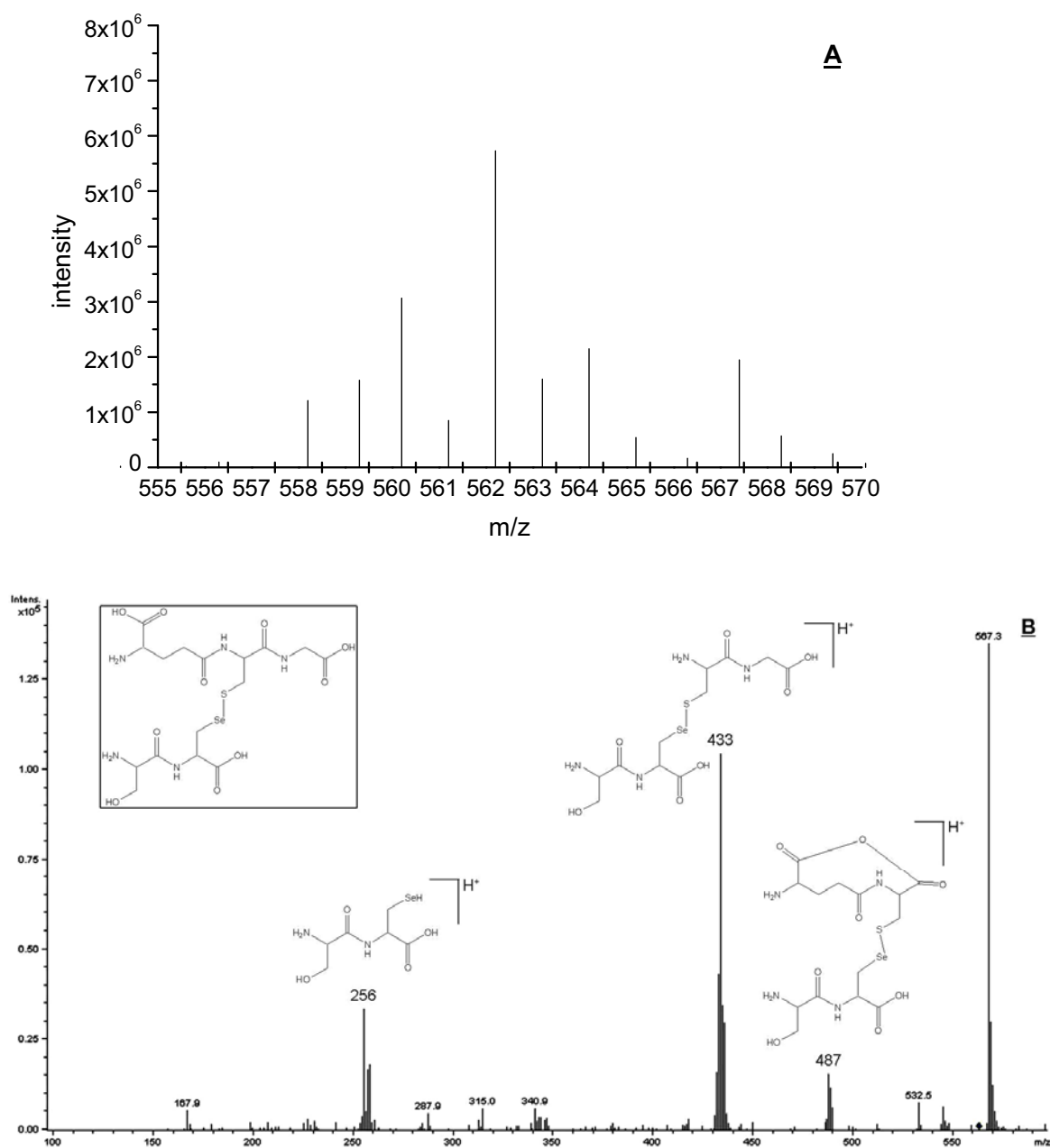


Fig. A2. ES-MS spectrum of Se-cysteinylserineglutathione detected in *T. alata* root extract (**A**). ES-MS/MS spectrum of Se-cysteinylserineglutathione (**B**).