

Supplementary material

Synchrotron X-ray distinction of seasonal hydrological and temperature patterns in speleothem carbonate

*Peter M. Wynn,^{A,I} Ian J. Fairchild,^B Christoph Spötl,^C Adam Hartland,^D
Dave Matthey,^E Barbara Fayard^{F,G} and Marine Cotte^{F,H}*

^ALancaster Environment Centre, University of Lancaster, Lancaster, LA1 4YQ, UK.

^BSchool of Geography, Earth and Environmental Sciences, University of Birmingham, Birmingham, Edgbaston, B15 2TT, UK.

^CInstitut für Geologie und Paläontologie, Leopold-Franzens-Universität Innsbruck, Innrain 52, A-6020 Innsbruck, Austria.

^DChemistry Department and Environmental Research Institute, Faculty of Science and Engineering, Environmental Research Institute, University of Waikato, Hamilton 3240, New Zealand.

^EDepartment of Earth Sciences, Royal Holloway University of London, Egham, Surrey, TW20 0EX, UK.

^FEuropean Synchrotron Radiation Facility, F-38043 Grenoble cedex, France.

^GLaboratoire de Physique des Solides, UMR 8502, Bât 510, Université Paris Sud, F-91405 Orsay cedex, France.

^HUPMC Univ. Paris 06, UMR 8220, Laboratory of Molecular and Structural Archeology – LAMS, Paris, France.

^ICorresponding author. Email: p.wynn@lancaster.ac.uk

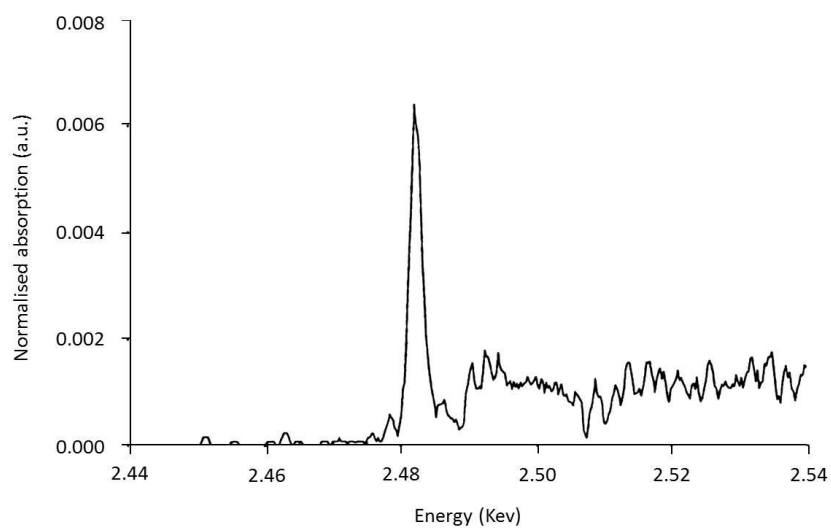


Fig. S1. X-Ray absorption near-edge fine structure (XANES) spectrum at the sulfur K-edge, acquired on speleothem OBI84. The white line peak intensity at 2.482 KeV is characteristic of sulfate speciation.