

Characteristics, seasonality and sources of inorganic ions and trace metals in North-east Asian aerosols

Chandra Mouli Pavuluri,^{A,E} Kimitaka Kawamura,^A Nikolaos Mihalopoulos,^{A,B,C} and Pingqing Fu^{A,D}

^AInstitute of Low Temperature Science, Hokkaido University, N19, W8, Kita-ku, Sapporo 060-0819, Japan.

^BEnvironmental Chemical Processes Laboratory, Department of Chemistry, University of Crete, PO Box 2208, GR-71003 Voutes, Heraklion, Greece.

^CPresent address: Institute for Environmental Research and Sustainable Development, National Observatory of Athens, GR-15236 Palea Penteli, Greece.

^DPresent address: State Key Laboratory of Atmospheric Boundary Layer Physics and Atmospheric Chemistry, Institute of Atmospheric Physics, Chinese Academy of Sciences, Beijing 100029, China.

^ECorresponding author. Email address: cmpavuluri@pop.lowtem.hokudai.ac.jp

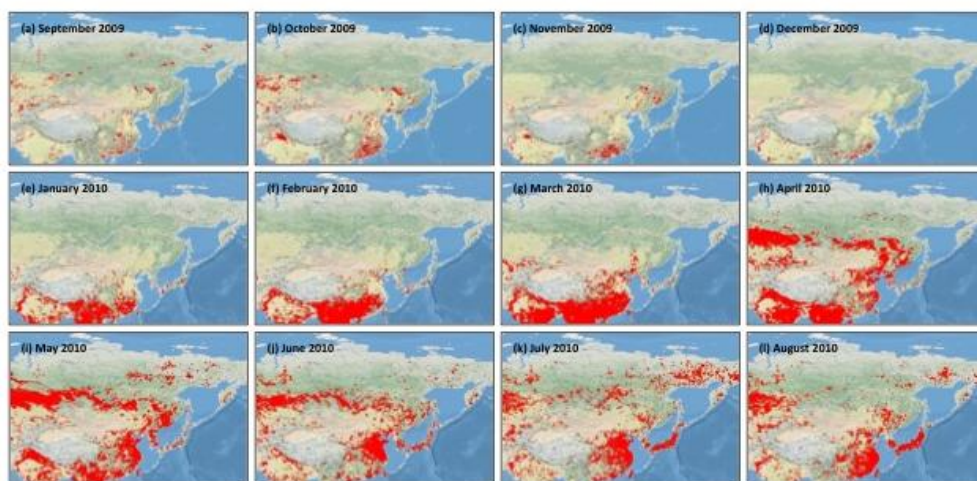


Fig. S1. Maps of monthly averages of active fires detected using MODIS data from the Terra satellite (<http://rapidfires.sci.gsfc.nasa.gov/>, accessed 12 November 2014) over the Asian region for the period of September 2009 and August 2010.