

## Supplementary Material

### **Simultaneous denitrification and hexavalent chromium removal by a newly isolated *Stenotrophomonas maltophilia* strain W26 under aerobic conditions**

*Qiang An,<sup>A,B</sup> Shu-man Deng,<sup>A</sup> Bin Zhao,<sup>A</sup> Zheng Li,<sup>A</sup> Jia Xu<sup>A</sup> and Jia-Li Song<sup>A</sup>*

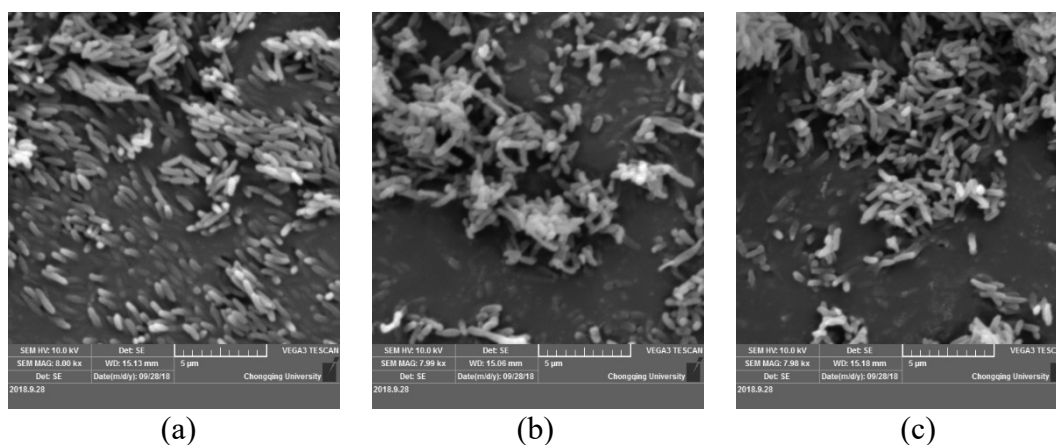
<sup>A</sup>The Key Laboratory of Eco-environments in Three Gorges Reservoir Region, Chongqing University, Chongqing 400045, China.

<sup>B</sup>Corresponding author. Email: anqiang@cqu.edu.cn

**Text S1** *Stenotrophomonas maltophilia* strain W26 16S ribosomal RNA gene, partial sequence

ORIGIN

```
1 ctgcagtcga cggcagcaca gggagagctt gctccttggg tggcagtggtg cggacgggtg
61 aggaatacat cggaatctac tctgtcgtgg gggataacgt agggaaactt acgctaatac
121 cgcatacgac ctacgggtga aagcagggga tcttcggacc ttgcgcgatt gaatgagccg
181 atgtcggatt agctagttgg cggggtaaag gcccaccaag gcgacgatec gtagctggtc
241 tgagaggatg atcagccaca ctggaactga gacacggtcc agactcctac gggaggcagc
301 agtggggaat attggacaat gggcgcaagc ctgatccagc cataccgcgt ggggtaagaa
361 ggccttcggg ttgtaaagcc cttttgttgg gaaagaaatc cagccggcta atacctggtt
421 gggatgacgg tacccaaaga ataagcaccg gctaacttcg tgccagcagc cgcggtaata
481 cgaagggtgc aagcgttact cggaattact gggcgtaaag cgtgcgtagg tggtcgttta
541 agtccgttg gaaagccctg ggtcaacct gggaaactgca gtggatactg ggcgactaga
601 gtgtggtaga gggtagcgga attcctggtg tagcagtga atgcgtagag atcaggagga
661 acatccatgg cgaaggcagc tacctggacc aacactgaca ctgaggcagc aaagcgtggg
721 gagcaaacag gattagatac cctggtagtc cacgccctaa acgatgcgaa ctggatgttg
781 ggtgcaattt ggcacgcagt atcgaagcta acgcgttaag ttcgccgcct ggggagtacg
841 gtcgcaagac tgaactcaa aggaattgac gggggcccgc acaagcggtg gagtatgtgg
901 ttaattega tgcaacgca agaacttac ctggccttga catgtcgaga acttccaga
961 gatgattgg tgcttcggg aactcgaaca caggtgctgc atggctgctc tcagctcgtg
1021 tegtgagatg ttgggttaag tcccgaacg agcgaaccc ttgtccttag ttgcccagc
1081 gtaatggtgg gaactctaag gagaccgccc gtgacaaacc ggaggaaggt ggggatgacg
1141 tcaagtcac atggccctta cggccagggc tacacacgta ctacaatggt agggacagag
1201 ggtgcaagc cggcgacggt aagccaatcc cagaaacct atcagtcg gattggagt
1261 ctgcaactcg actccatgaa gtcggaatcg ctagtaatcg cagatcagca ttgctcggt
1321 gaatacgttc cggggccttg tacacaccgc cgtcacacc atgggagttt gttgcaccag
1381 aagcaggtag cttaaccttc gggagggcgc tgccacg//
```



**Figure S1.** SEM images of (a) control, (b) 10mg/L of Cr (VI) treated cells after 24 h and (c) 10mg/L of Cr (VI) treated cells after 72 h