

## Supplementary Material

### **Photochemical activity changes accompanying the embryogenesis of pea (*Pisum sativum*) with yellow and green cotyledons**

*Galina Smolikova*<sup>A,E</sup>, *Vladimir Kreslavski*<sup>B,C</sup>, *Olga Shiroglazova*<sup>A</sup>, *Tatiana Bilova*<sup>A</sup>, *Elena Sharova*<sup>A</sup>, *Andrej Frolov*<sup>D</sup> and *Sergei Medvedev*<sup>A,E</sup>

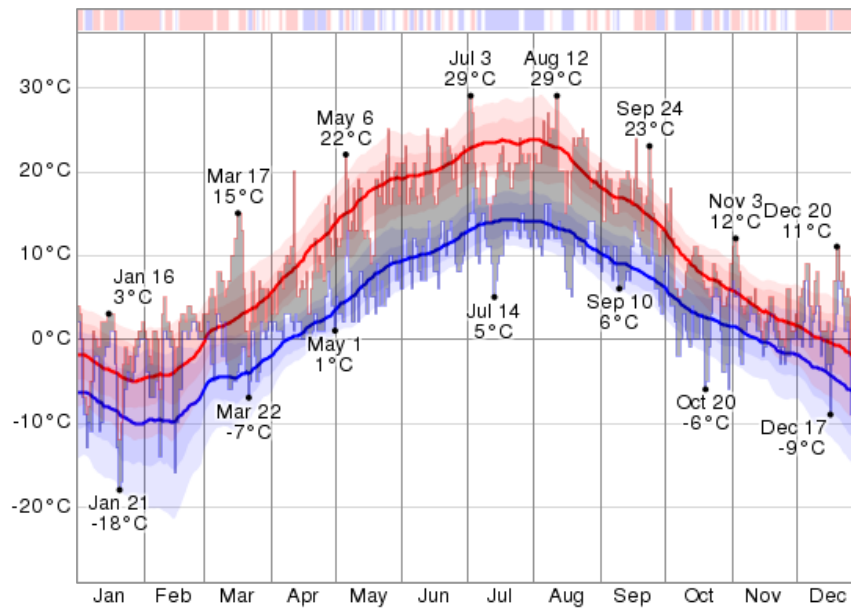
<sup>A</sup>Department of Plant Physiology and Biochemistry, Saint-Petersburg State University, 7/9 Universitetskaya nab., St. Petersburg 199034, Russia.

<sup>B</sup>Institute of Plant Physiology, Russian Academy of Sciences, Botanicheskaya Street 35, Moscow 127276, Russia.

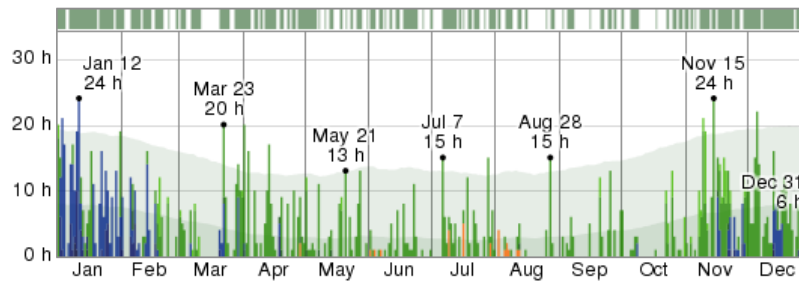
<sup>C</sup>Institute of Basic Biological Problems, Russian Academy of Sciences, Institutskaya Street 2, Pushchino, Moscow Region 142290, Russia.

<sup>D</sup>Department of Bioorganic Chemistry, Leibniz Institute of Plant Biochemistry, Weinberg 3, Halle (Saale) 06120, Germany.

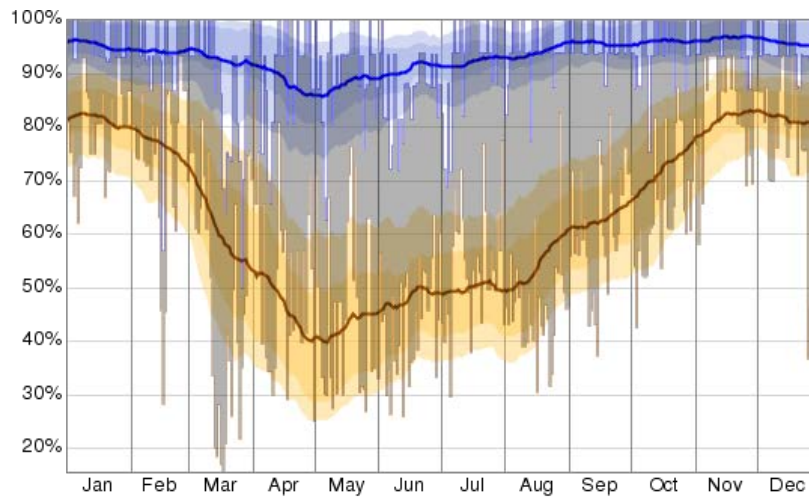
<sup>E</sup>Corresponding authors. Emails: g.smolikova@spbu.ru; s.medvedev@spbu.ru



A

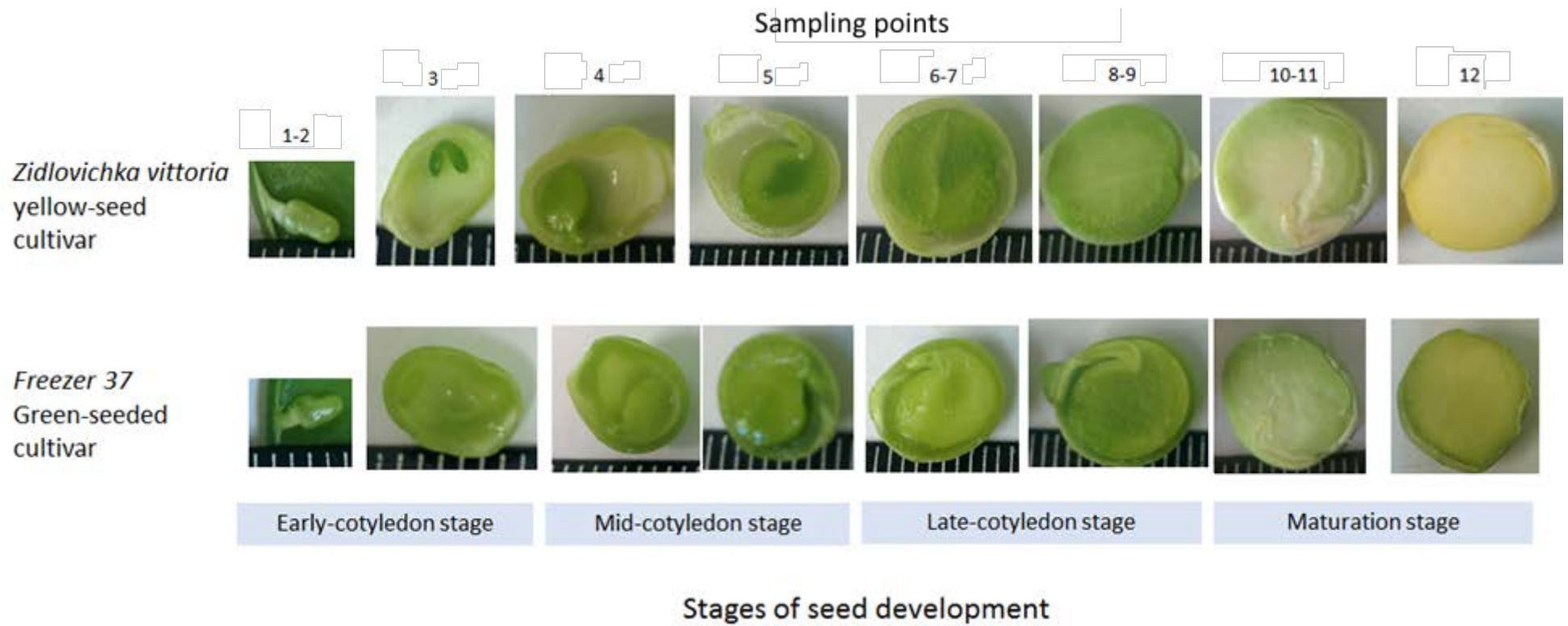


B



C

**Fig. S1.** The daily low (blue) and high (red) temperature (A), observed precipitation (B) and low (brown) and high (blue) relative humidity (C) in St-Petersburg (Russia) during 2015. From <https://weatherspark.com/history/33821/2015/Saint-Petersburg-Sankt-Petersburg-Russian-Federation>



**Fig. S2.** Stages of pea seed development used for studying the photochemical activity.