

Supplementary material

Molecular phylogeny informs generic and subgeneric concepts in the *Schizoptera* Fieber genus group (Heteroptera : Schizopteridae) and reveals multiple origins of female-specific elytra

S. Leon^{A,B} and *C. Weirauch*^A

^ADepartment of Entomology, University of California, Riverside, 900 University Avenue, Riverside, CA 92521, USA.

^BCorresponding author. Email: sleon002@ucr.edu

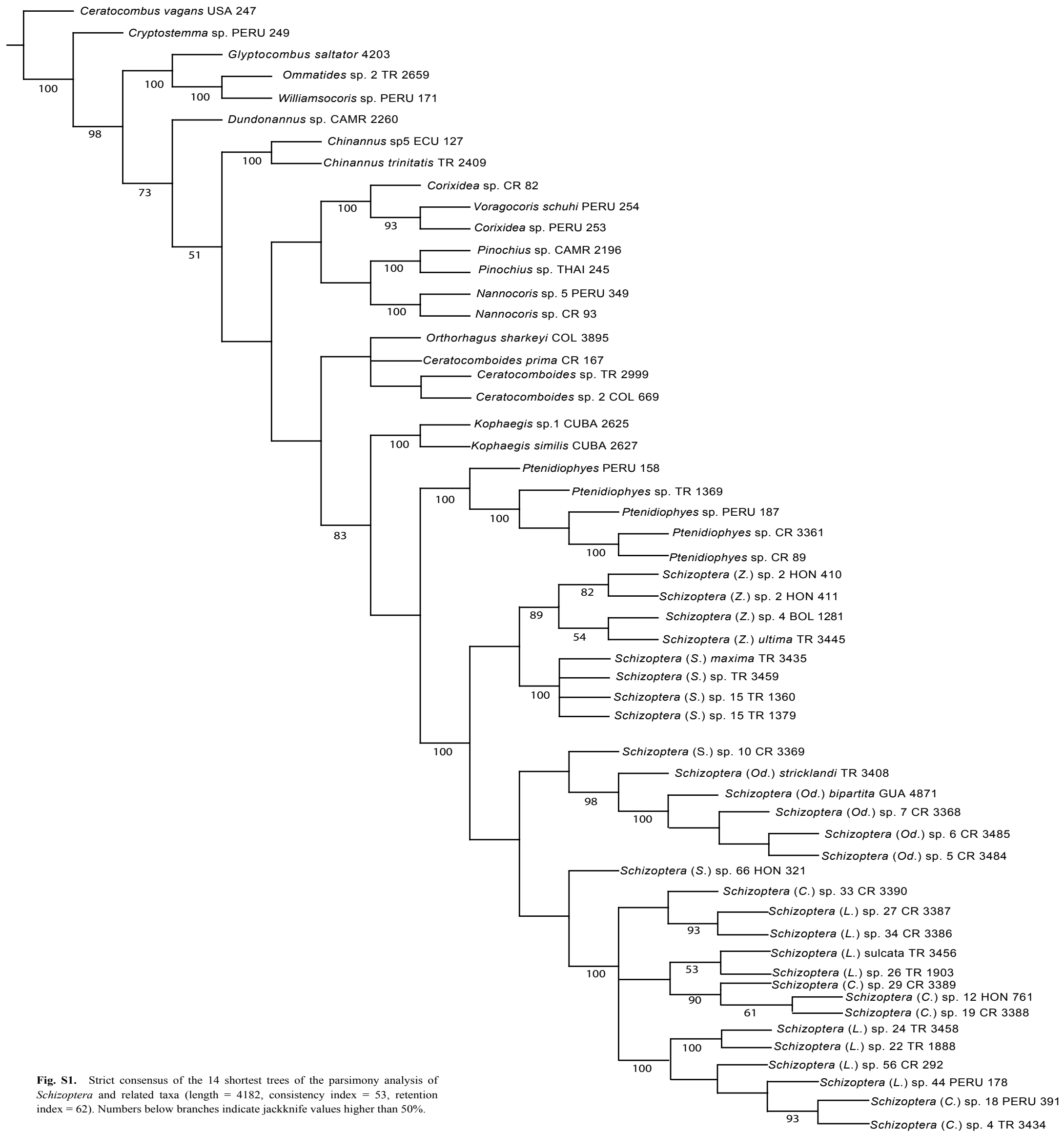
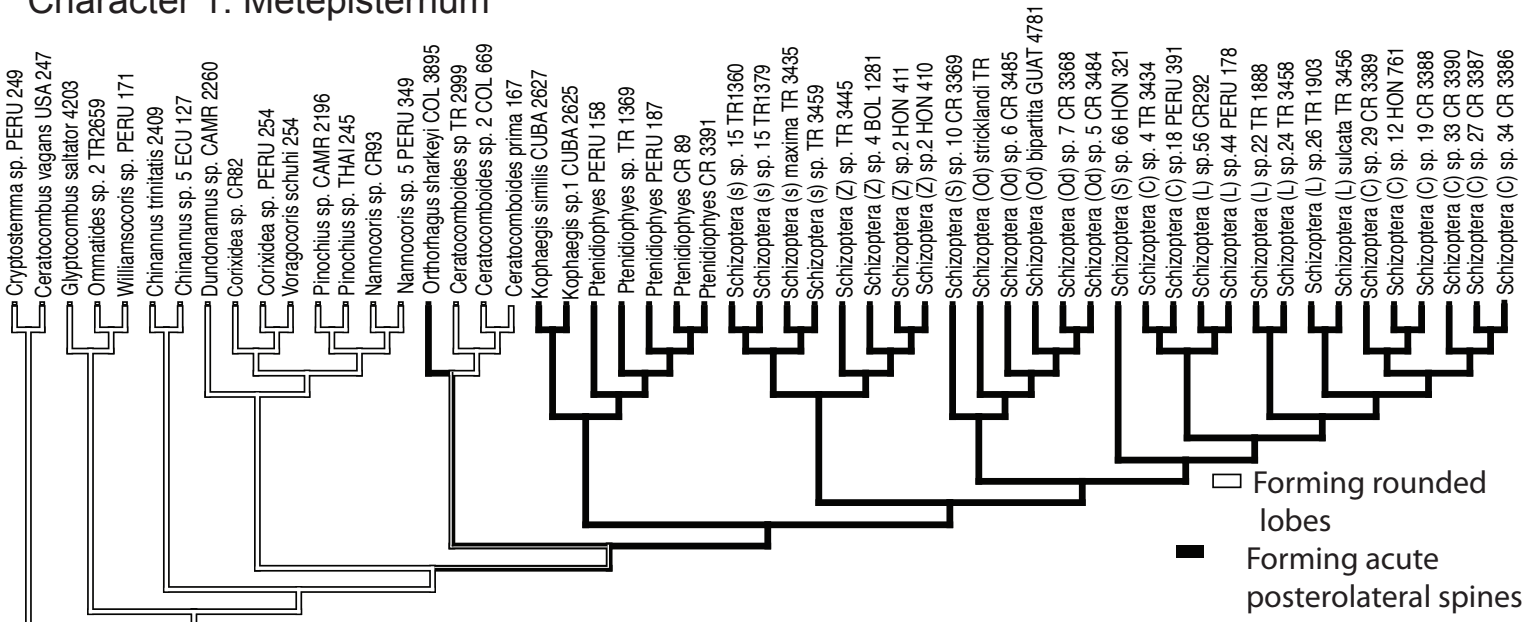
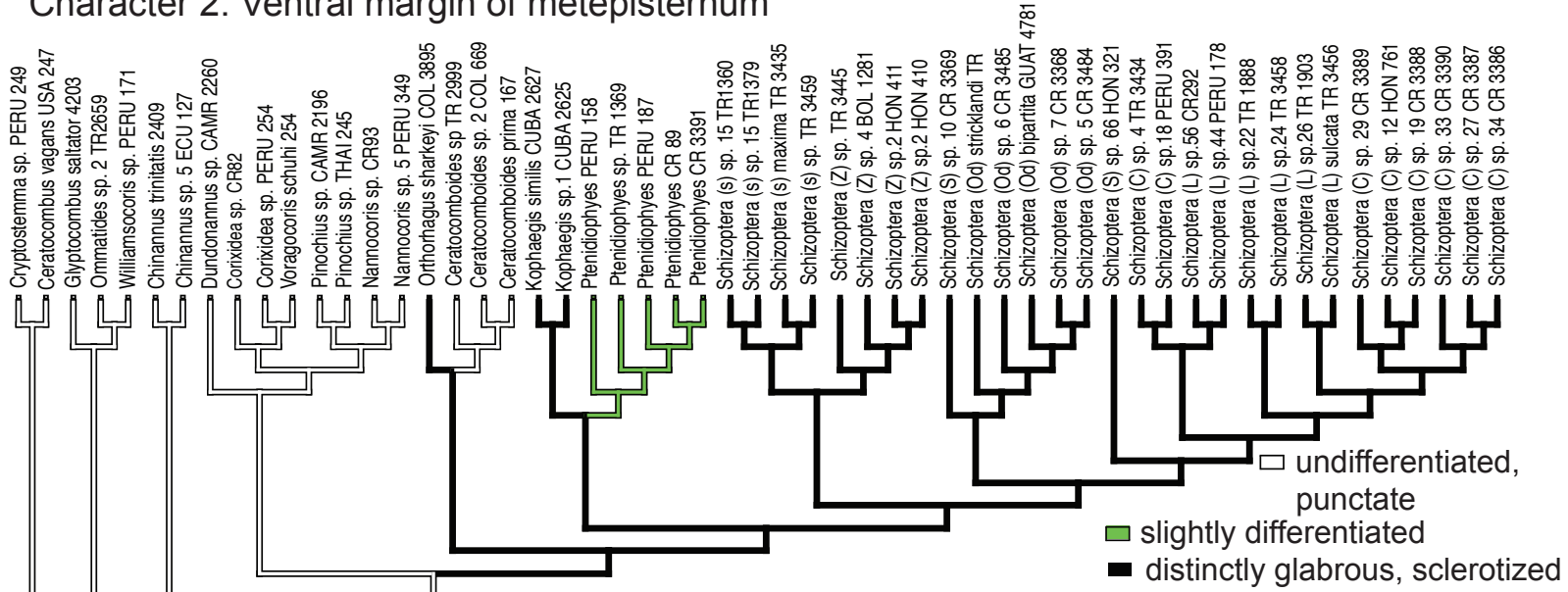


Fig. S1. Strict consensus of the 14 shortest trees of the parsimony analysis of *Schizoptera* and related taxa (length = 4182, consistency index = 53, retention index = 62). Numbers below branches indicate jackknife values higher than 50%.

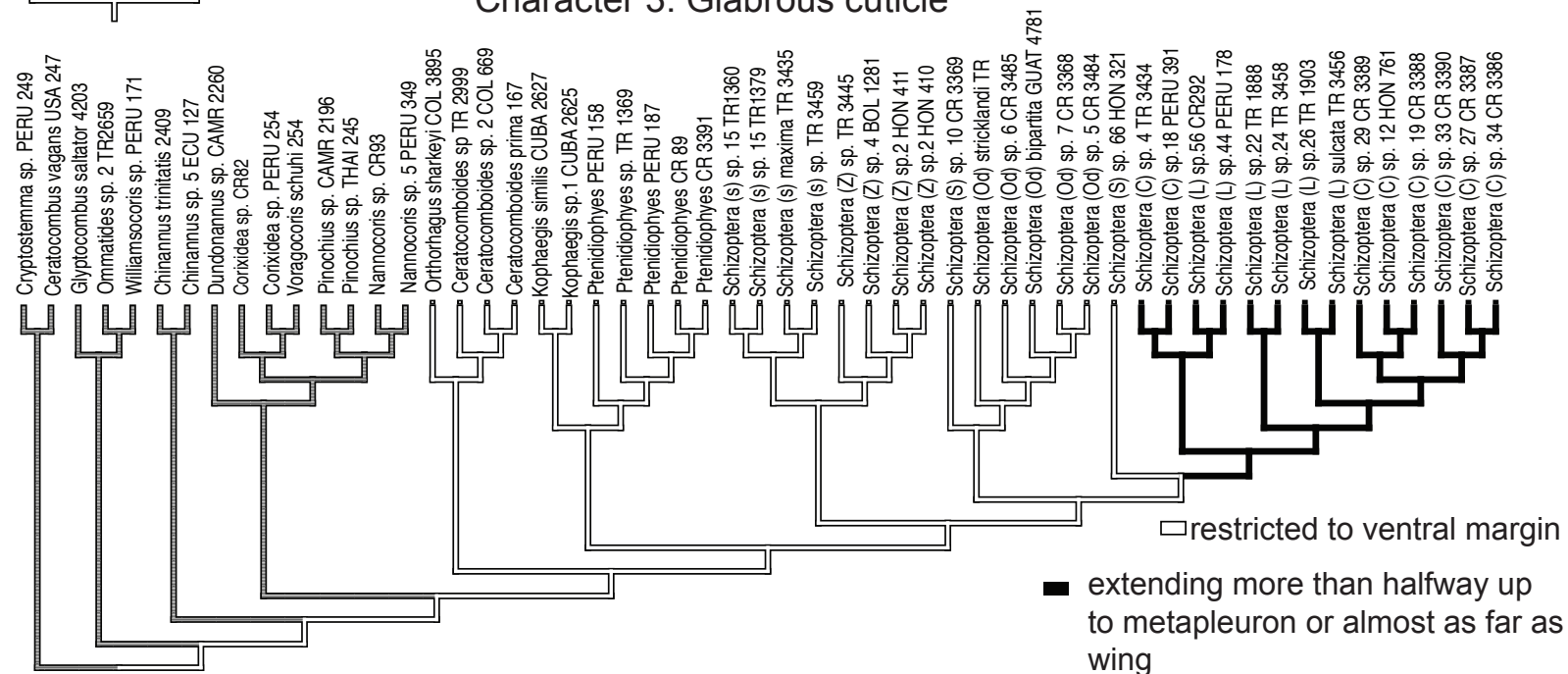
Character 1: Metepisternum



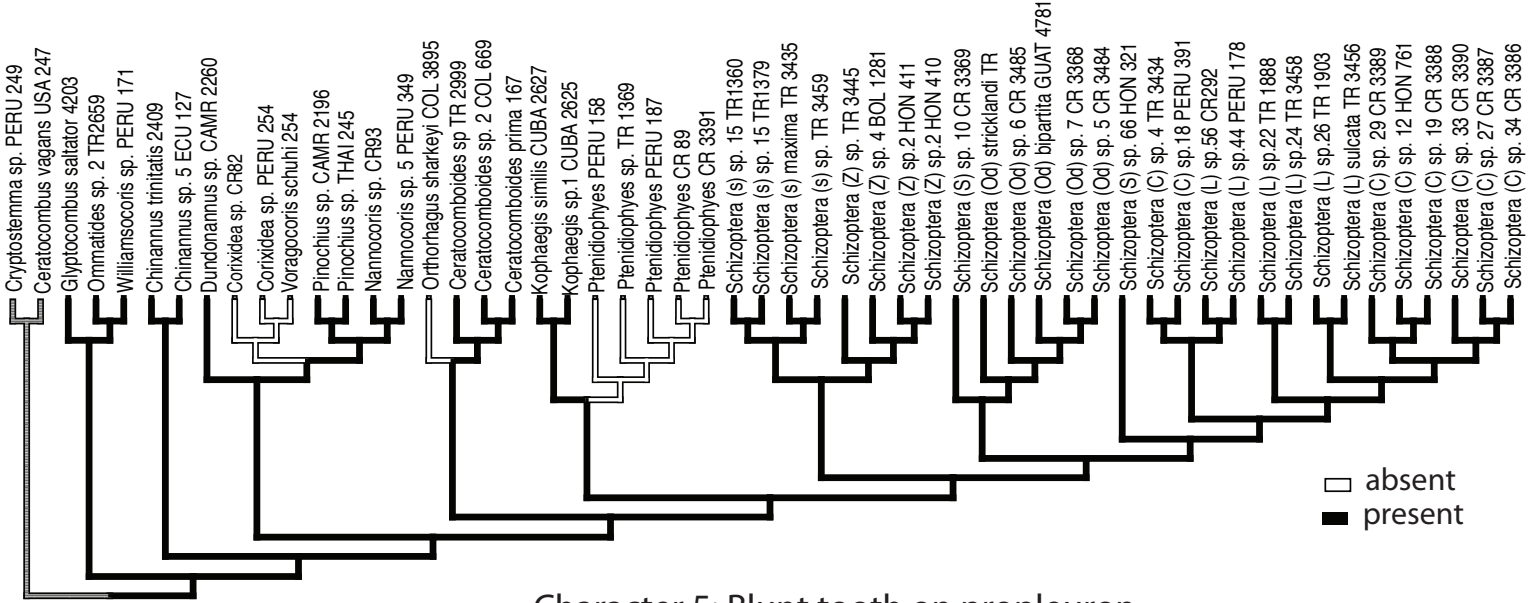
Character 2: Ventral margin of metepisternum



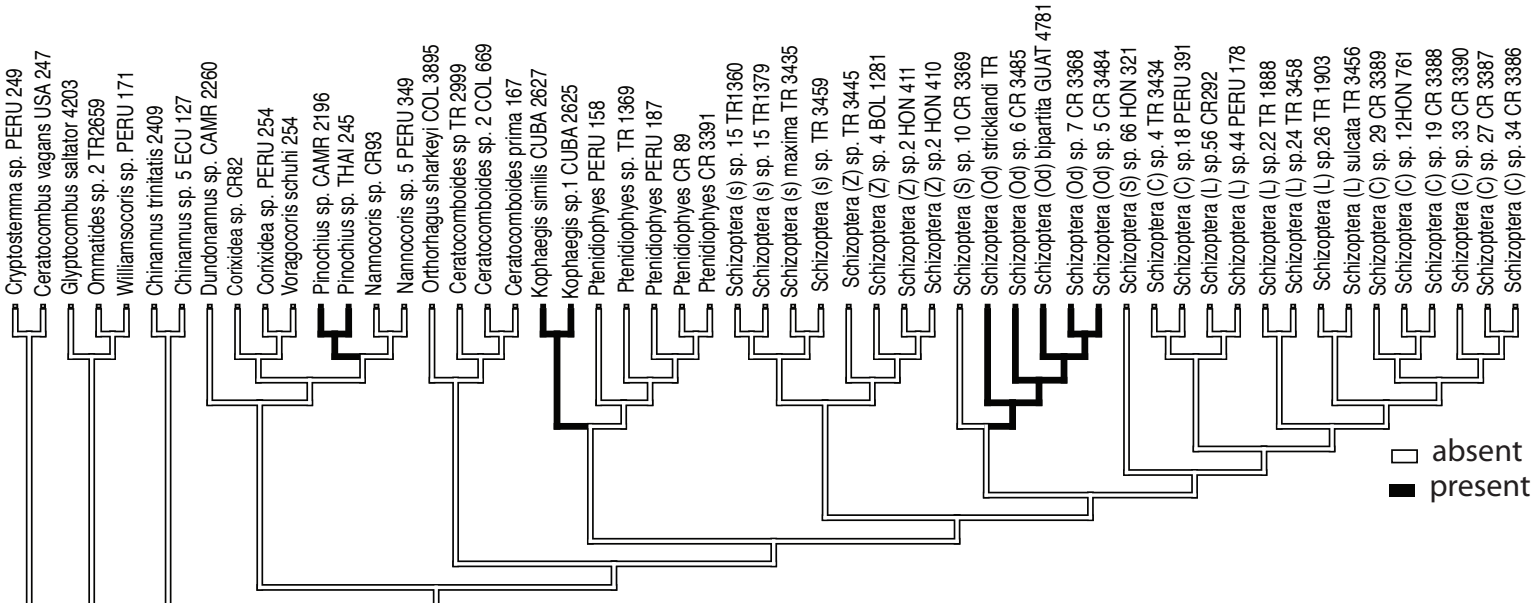
Character 3: Glabrous cuticle



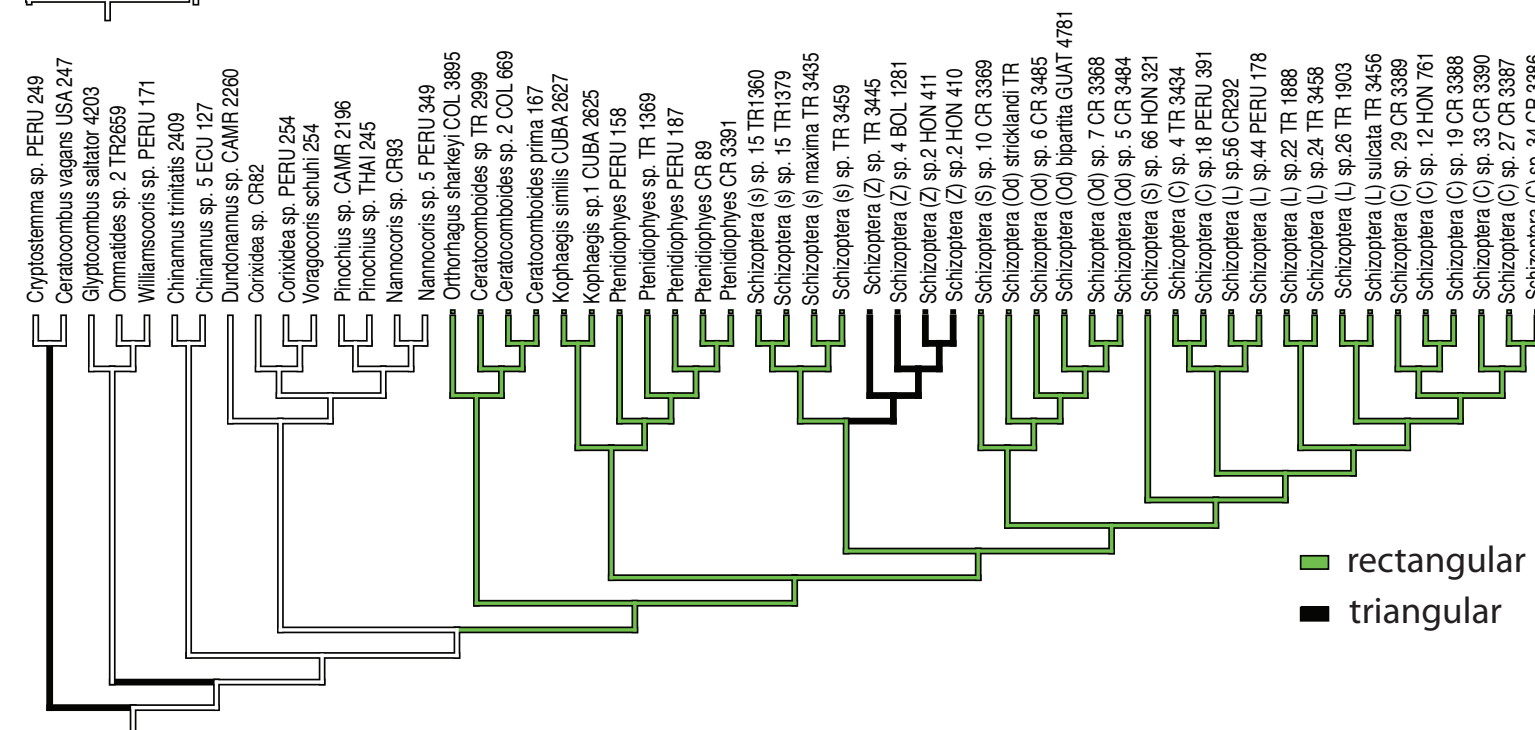
Character 4: Pronotal collar



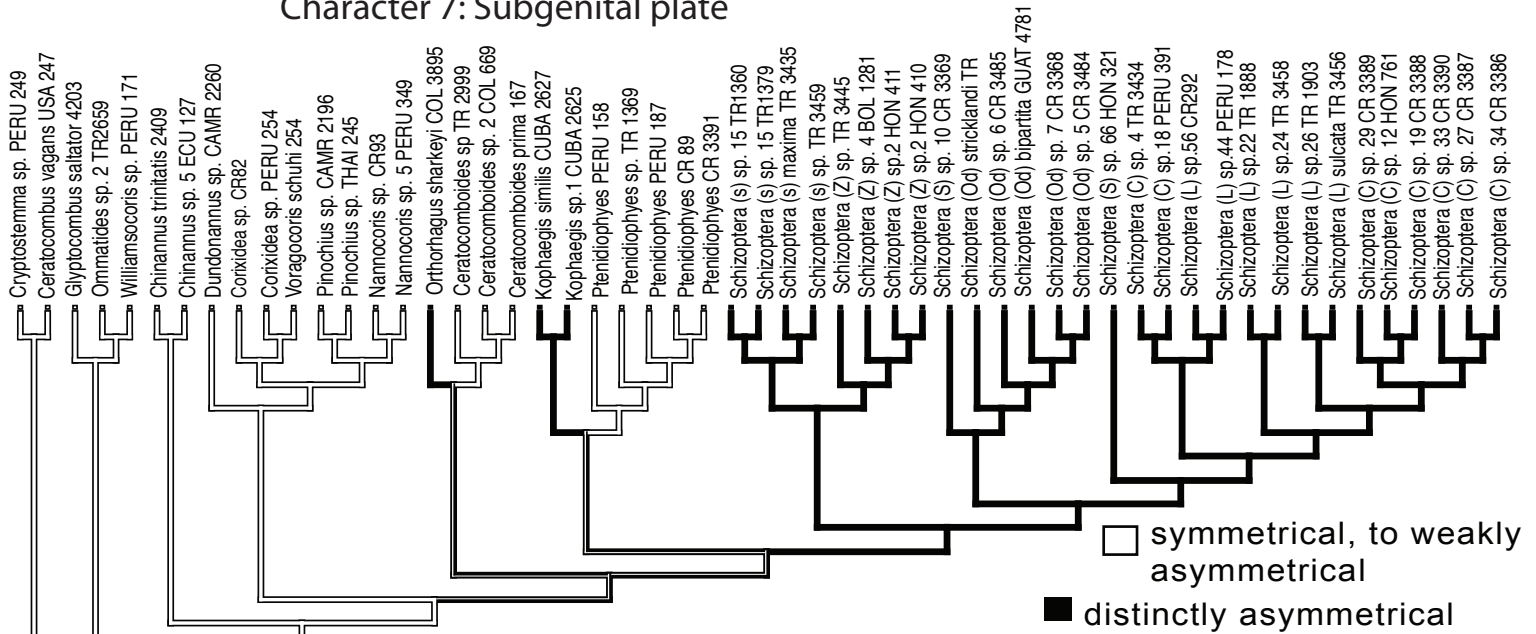
Character 5: Blunt tooth on propleuron



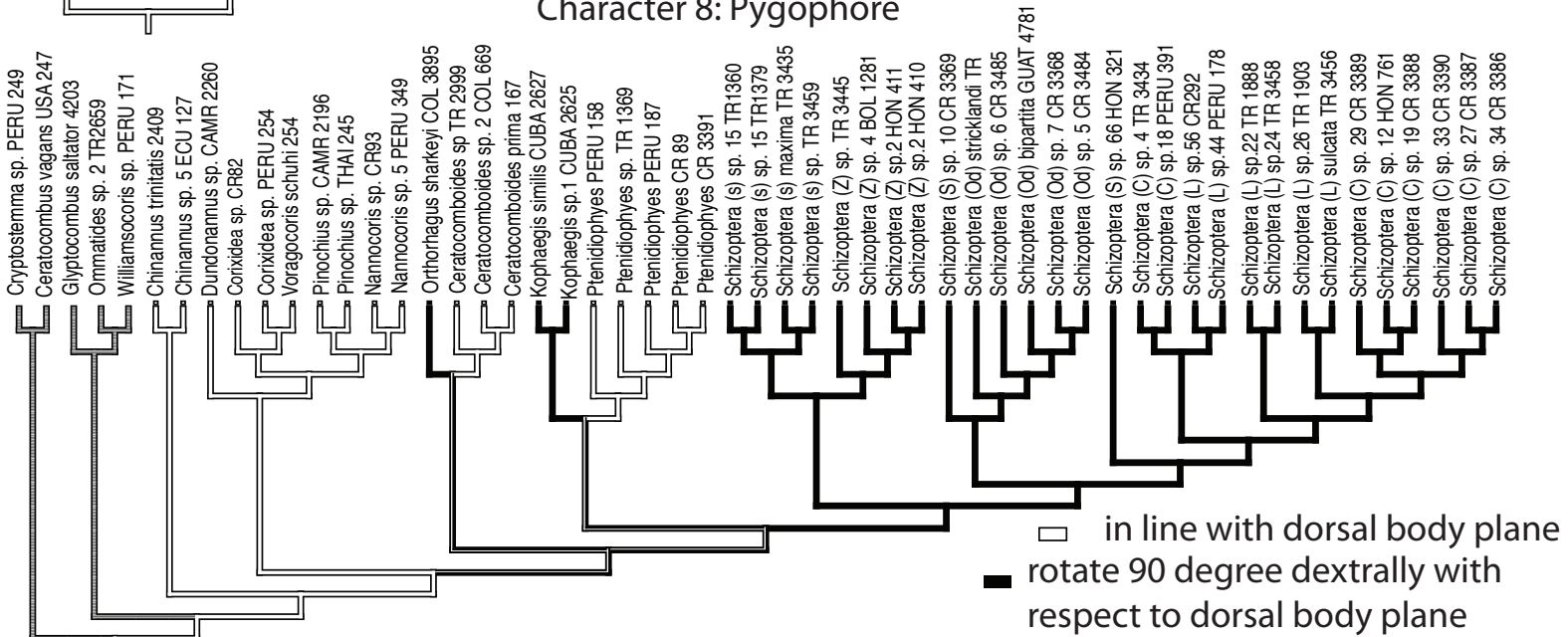
Character 6: Posterior membranal cell



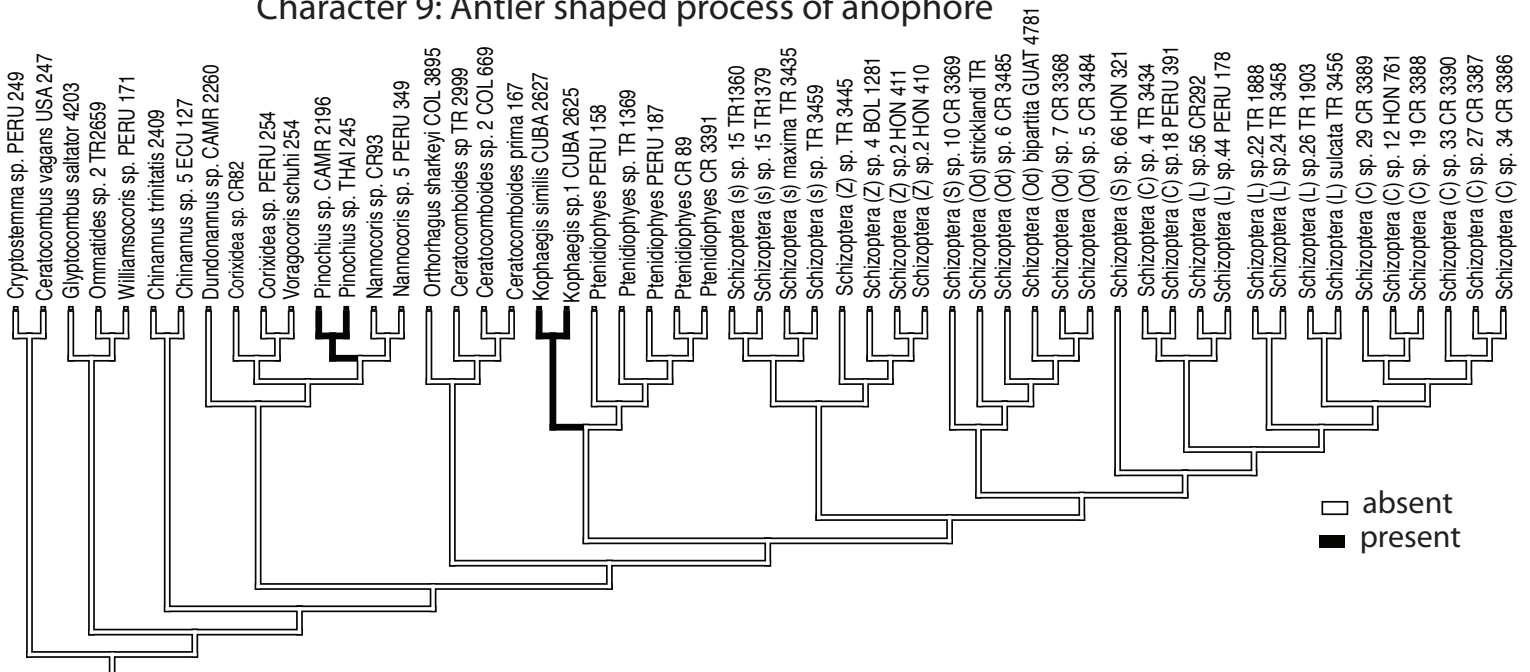
Character 7: Subgenital plate



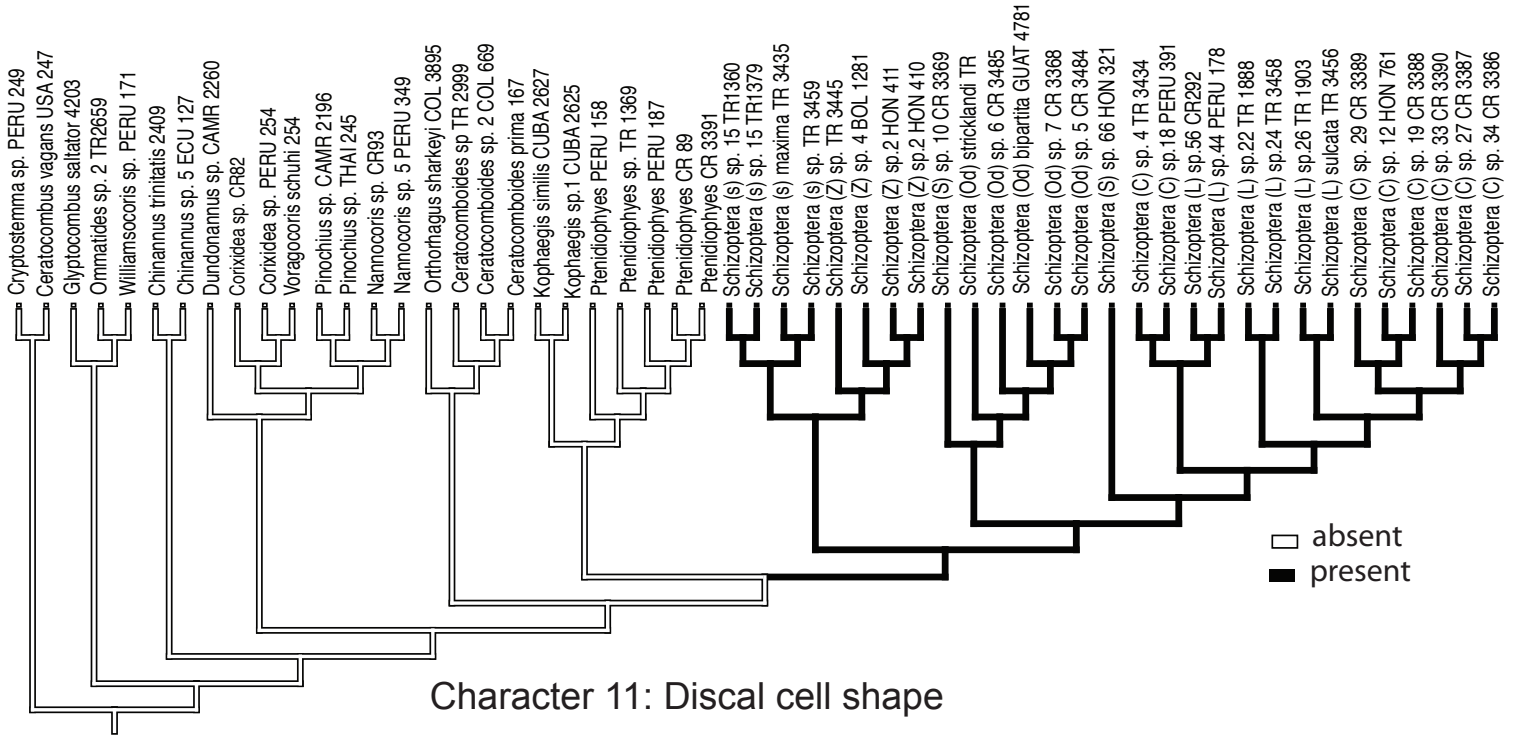
Character 8: Pygophore



Character 9: Antler shaped process of anophore



Character 10: Genital spiculae



Character 11: Discal cell shape

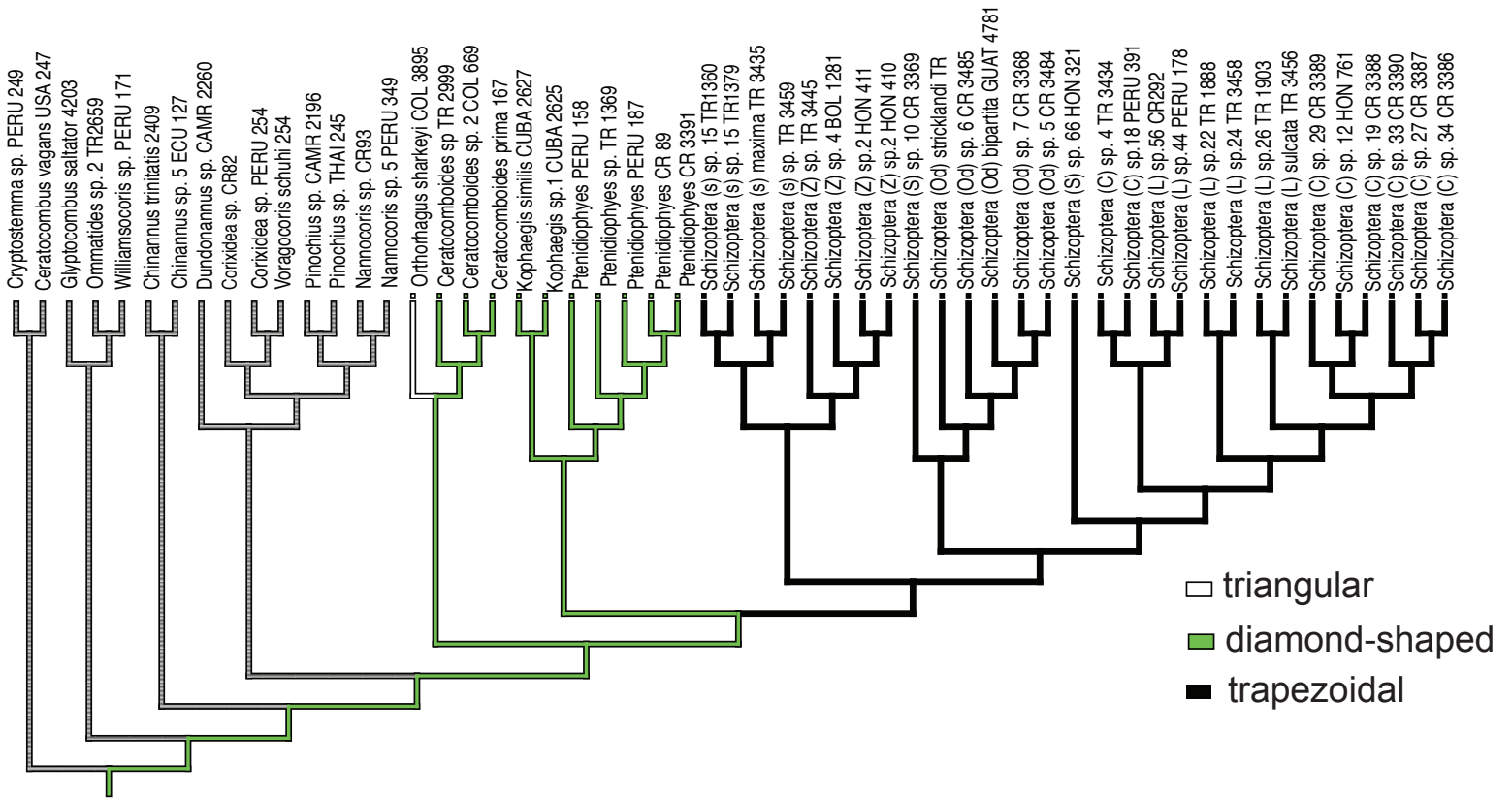


Fig. S2. Individual ancestral state reconstruction using parsimony of characters 1–11 optimised on the Maximum Likelihood tree.