

SUPPLEMENTARY MATERIAL

Pseudoscorpions of the family Feaellidae (Pseudoscorpiones : Feaelloidea) from the Pilbara region of Western Australia show extreme short-range endemism

Mark S. Harvey^{A,B,C,D,F}, Kym M. Abrams^{A,B}, Amber S. Beavis^{A,E}, Mia J. Hillyer^A and Joel A. Huey^{A,B}

^ADepartment of Terrestrial Zoology, Western Australian Museum, Locked Bag 49, Welshpool DC, WA 6986, Australia.

^BSchool of Animal Biology, University of Western Australia, Crawley, WA 6009, Australia.

^CSchool of Natural Sciences, Edith Cowan University, Joondalup, WA 6027, Australia.

^DDivision of Invertebrate Zoology, American Museum of Natural History, 79th Street at Central Park West, New York, NY 10024-5192, USA; Department of Entomology, California Academy of Sciences, Golden Gate Park, San Francisco, CA 94103-3009, USA.

^EPresent address: Office of the Chief Scientist, Level 9, 10 Binara Street, Canberra City, ACT 2601, Australia.

^FCorresponding author. Email: mark.harvey@museum.wa.gov.au

Fig. S1. Maximum likelihood phylogeny of Australian Feaellidae, using CO1. Bootstrap values are presented for all nodes. See 'Materials and methods' for more details.

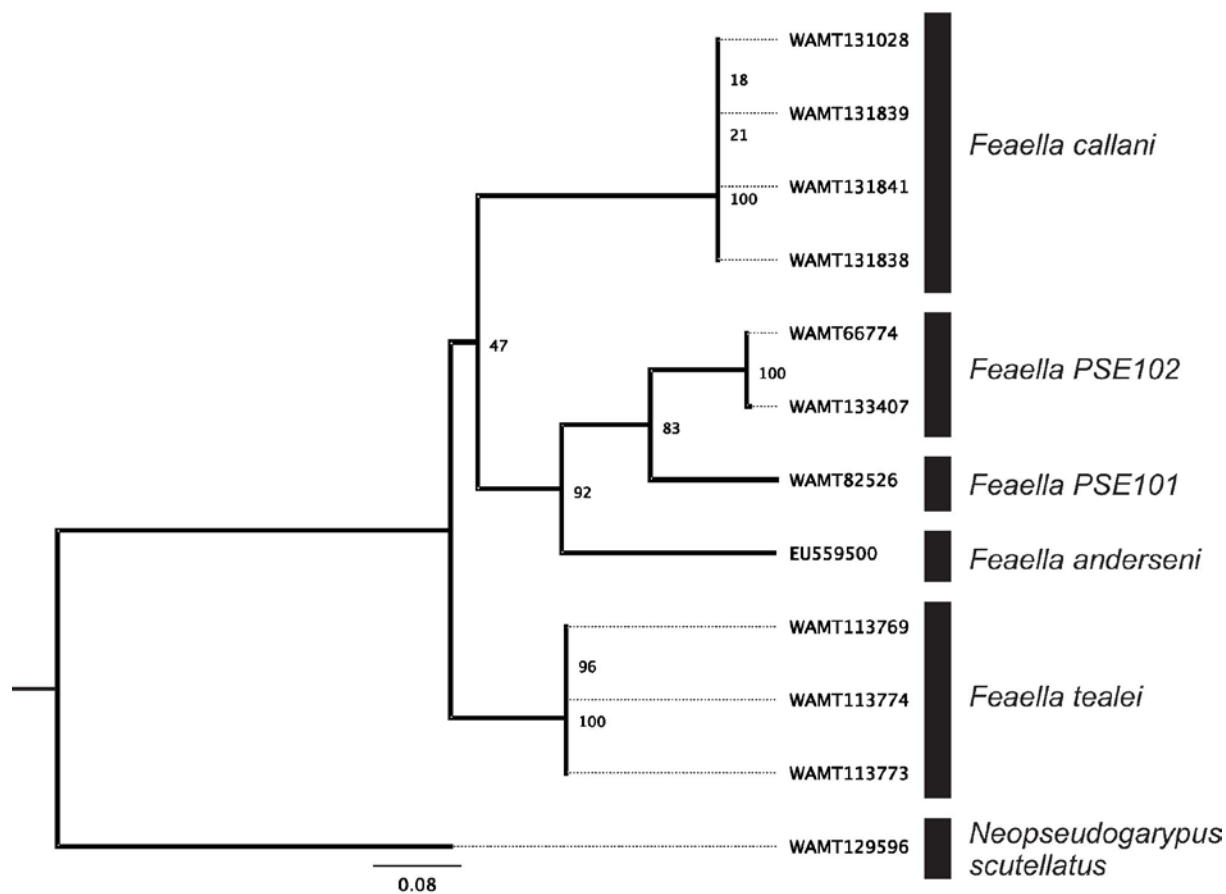


Fig. S2. Maximum likelihood phylogeny of Australian Feaellidae, using ITS2. Bootstrap values are presented for all nodes. See 'Materials and methods' for more details.

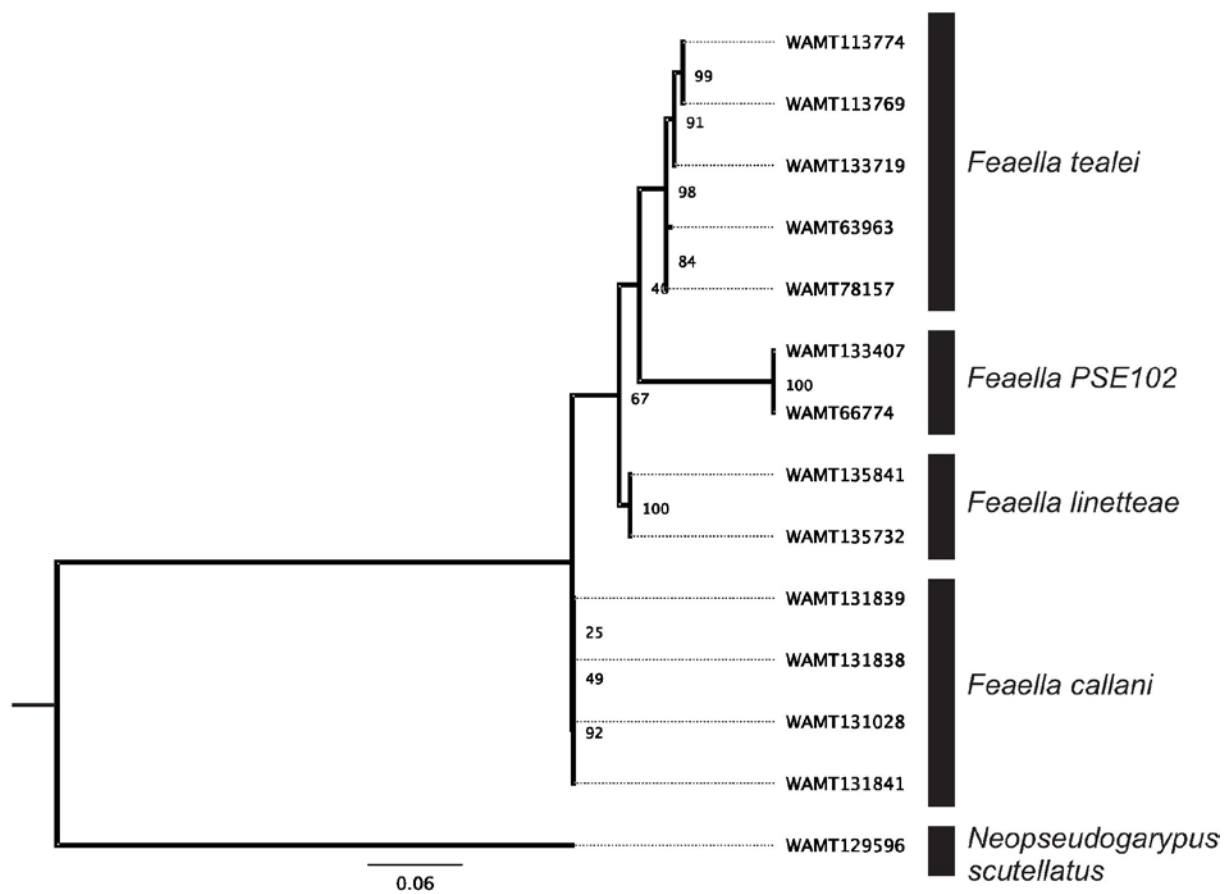


Fig. S3. Maximum likelihood phylogeny of Australian Feaellidae, using 28S. Bootstrap values are presented for all nodes. See 'Materials and methods' for more details.

