
Supplementary material

A molecular phylogeny of the Palearctic and Oriental members of the tribe Boarmiini (Lepidoptera : Geometridae : Ennominae)

Nan Jiang^{A,D}, *Xinxin Li*^{A,B,D}, *Axel Hausmann*^C, *Rui Cheng*^A, *Dayong Xue*^A and *Hongxiang Han*^{A,E}

^AKey Laboratory of Zoological Systematics and Evolution, Institute of Zoology, Chinese Academy of Sciences, No. 1 Beichen West Road, Chaoyang District, Beijing 100101, China.

^BUniversity of Chinese Academy of Sciences, 19A Yuquan Road, Shijingshan District, Beijing 100049 China.

^CSNSB – Zoologische Staatssammlung München, Münchhausenstraße 21, Munich 81247, Germany.

^DThese authors contributed equally to this work.

^ECorresponding author. Email: hanhx@ioz.ac.cn

Details of specimens illustrated in Figures 2 and 3

Hypomecis umbrosaria (Hübner, 1813)

Adult. N. America: 1 ♂ (BMNH). *Male Genitalia.* United States of America: Barnstable, Mass, 30.vi.1950, C P Kinball (4880♂), Brit. Mus. 1954–15, Geometridae genitalia slide no. 19638 (BMNH).

Ematurga atomaria (Linnaeus, 1758)

Adult. Germany: 1 ♂, Fürth in Bayern, 4.v.1954, coll. Heischmann (ZSM). *Male Genitalia.* Germany: Fürth in Bayern, 4.v.1954, coll. Heischmann, Geometridae genitalia slide no. 20240 (ZSM). *Female Genitalia.* Germany: Fürth in Bayern, 7.v.1954, coll. Heischmann, Geometridae genitalia slide no. 20241 (ZSM).

Krananda semihyalina Moore, 1867

Adult. India: 1 ♀ (syntype), Bengal, Moore Coll. 94–106, BMNH(E)#1008974 (BMNH). *Male Genitalia.* India: Assam, Cherra punji, Geometridae genitalia slide no. 20270 (ZSM). *Female Genitalia.* India: Sikkim, viii.1909, F Moller. 1910–140, Geometridae genitalia slide no. 16028 (BMNH).

Zanclopera falcata Warren, 1894

Adult. India: 1 ♂ (holotype), Khasia Hills, Assam, Rothschild Bequest, B.M.1939–1, BMNH(E)#1008979 (BMNH). *Male Genitalia.* India: Khasia (sic) Hs, 94–189, Geometridae genitalia slide no. 16019 (BMNH). *Female Genitalia.* India: Gopaldhara, Darjeeling, 3400–5800 ft, (H. Stevens), Rothschild Bequest, B.M.1939–1, Geometridae genitalia slide no. 16031, BMNH(E)#1008982 (BMNH).

Institution cited as depositary are the Natural History Museum, London, UK (BMNH) and the Zoologische Staatssammlung München, Munich, Germany (ZSM).

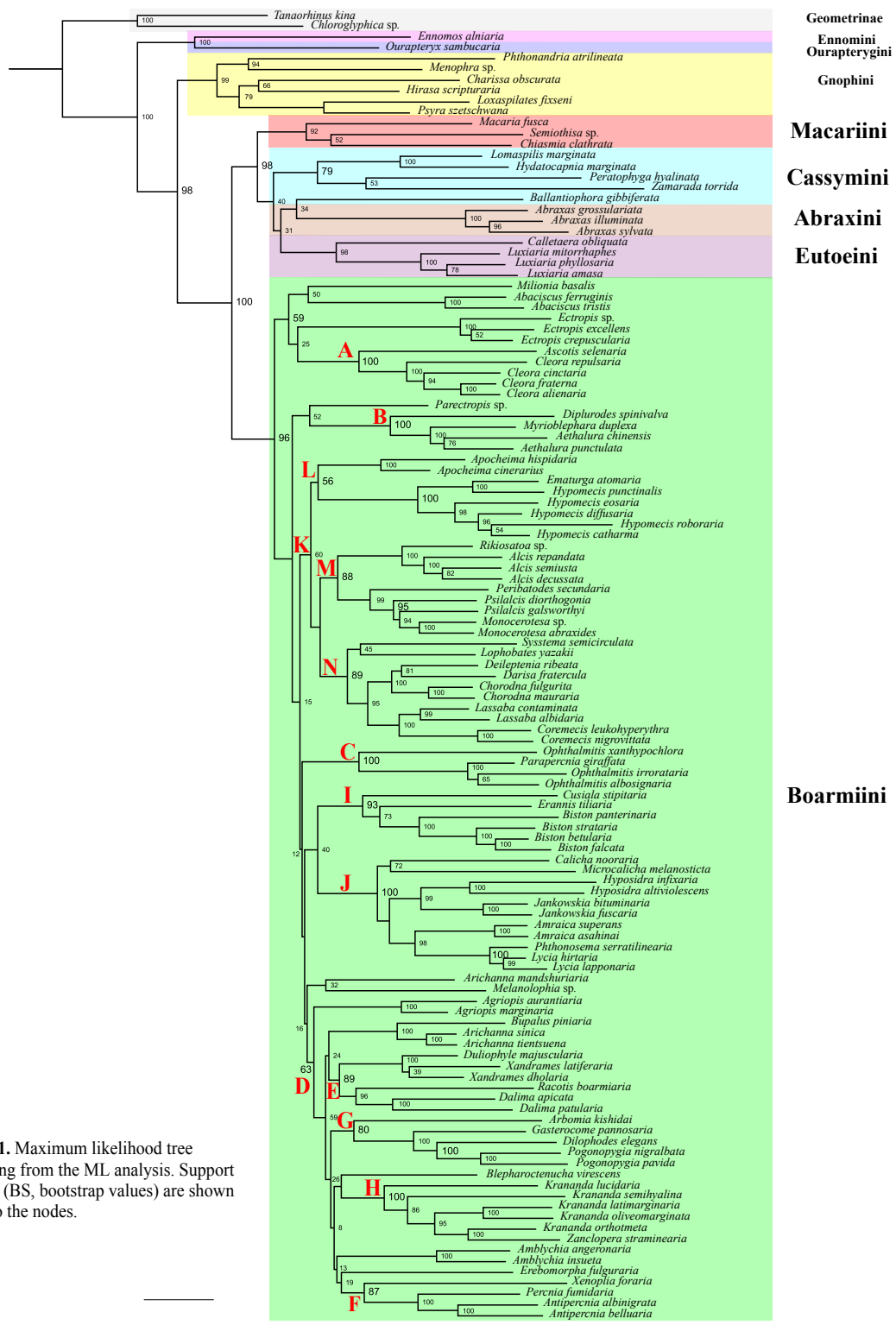


Fig. S1. Maximum likelihood tree resulting from the ML analysis. Support values (BS, bootstrap values) are shown next to the nodes.