

Supplementary material

Morphological and mitochondrial DNA data reshuffle the taxonomy of the genera *Atopochetus* Attems, *Litostrophus* Chamberlin and *Tonkinbolus* Verhoeff (Diplopoda: Spirobolida: Pachybolidae), with descriptions of nine new species

Piyatida Pimvichai^{A,F}, *Henrik Enghoff*^B, *Somsak Panha*^C and *Thierry Backeljau*^{D,E}

^ADepartment of Biology, Faculty of Science, Mahasarakham University, Mahasarakham 44150, Thailand.

^BNatural History Museum of Denmark, University of Copenhagen, Universitetsparken 15, DK-2100 Copenhagen Ø, Denmark.

^CAnimal Systematics Research Unit, Department of Biology, Faculty of Science, Chulalongkorn University, Bangkok 10330, Thailand.

^DRoyal Belgian Institute of Natural Sciences (RBINS), Vautierstraat 29, B-1000 Brussels, Belgium.

^EEvolutionary Ecology Group, University of Antwerp, Universiteitsplein 1, B-2610 Antwerp, Belgium.

^FCorresponding author. Email: piyatida_pimvichai@yahoo.com

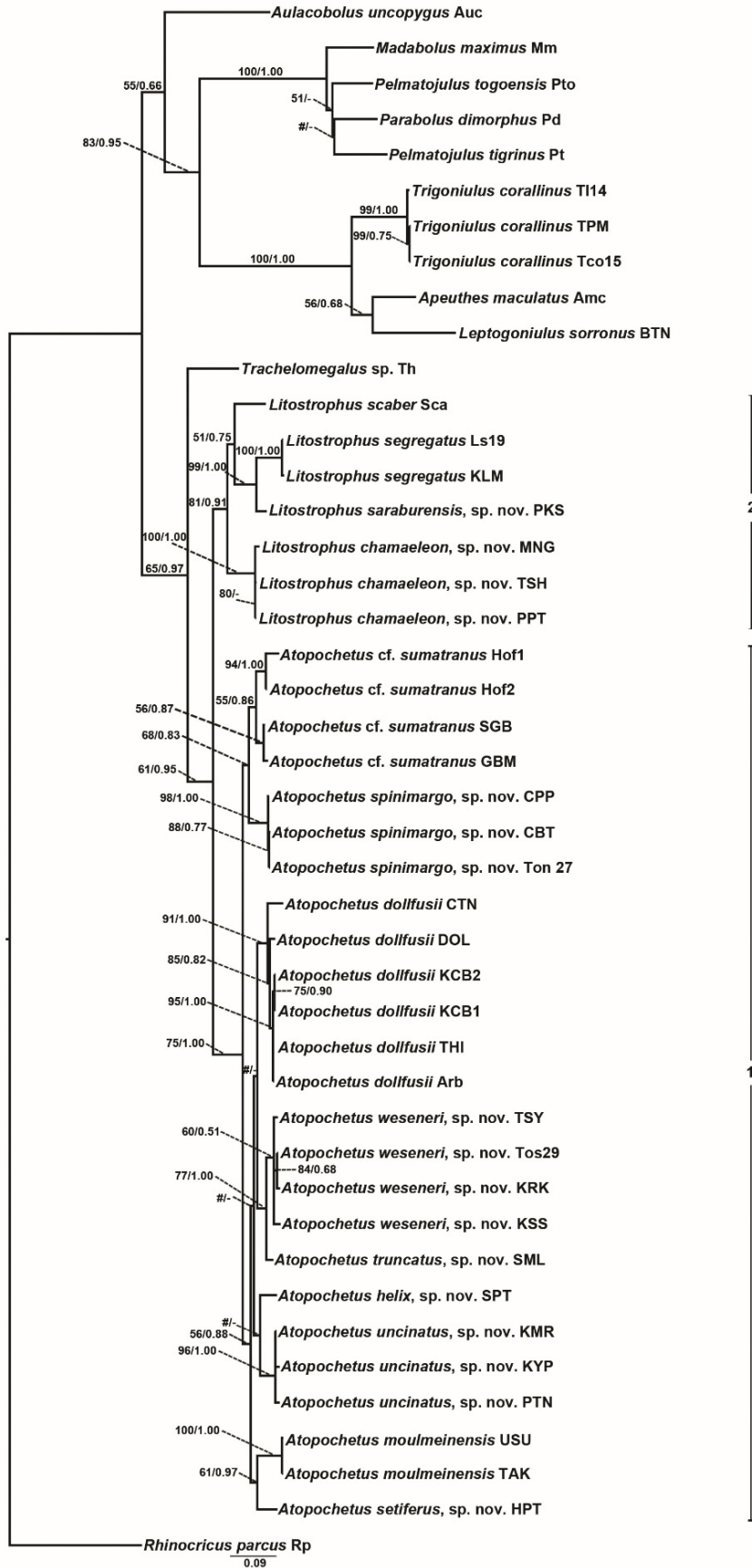


Fig. S1. Phylogenetic relationships of *Litostrophus* and *Atopochetus* species based on maximum likelihood analysis (ML) and Bayesian Inference (BI) of 496 bp of *16S* rRNA. Numbers at nodes indicate branch support based on bootstrapping (ML) / posterior probabilities (BI). Scale bar = 0.09 substitutions/site. # indicates branches which received < 50% ML bootstrap support, - indicates non-supported branches by posterior probability. Clade memberships and designations are shown as vertical bars.

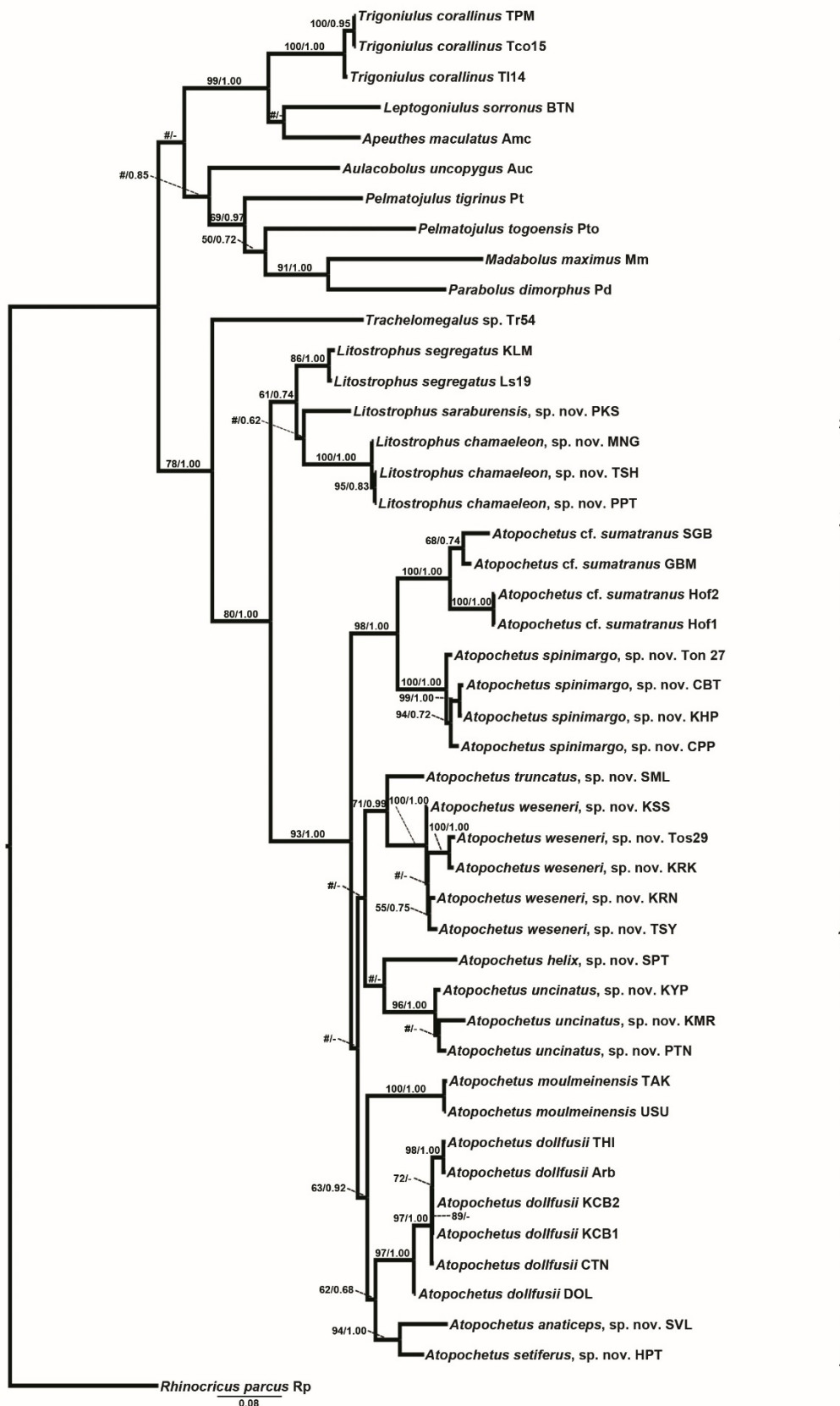


Fig. S2. Phylogenetic relationships of *Litostrophus* and *Atopochetus* species based on maximum likelihood analysis (ML) and Bayesian Inference (BI) of 660 bp of *COI*. Numbers at nodes indicate branch support based on bootstrapping (ML) / posterior probabilities (BI). Scale bar = 0.08 substitutions/site. # indicates branches which received < 50% ML bootstrap support, - indicates non-supported branches by posterior probability. Clade memberships and designations are shown as vertical bars.

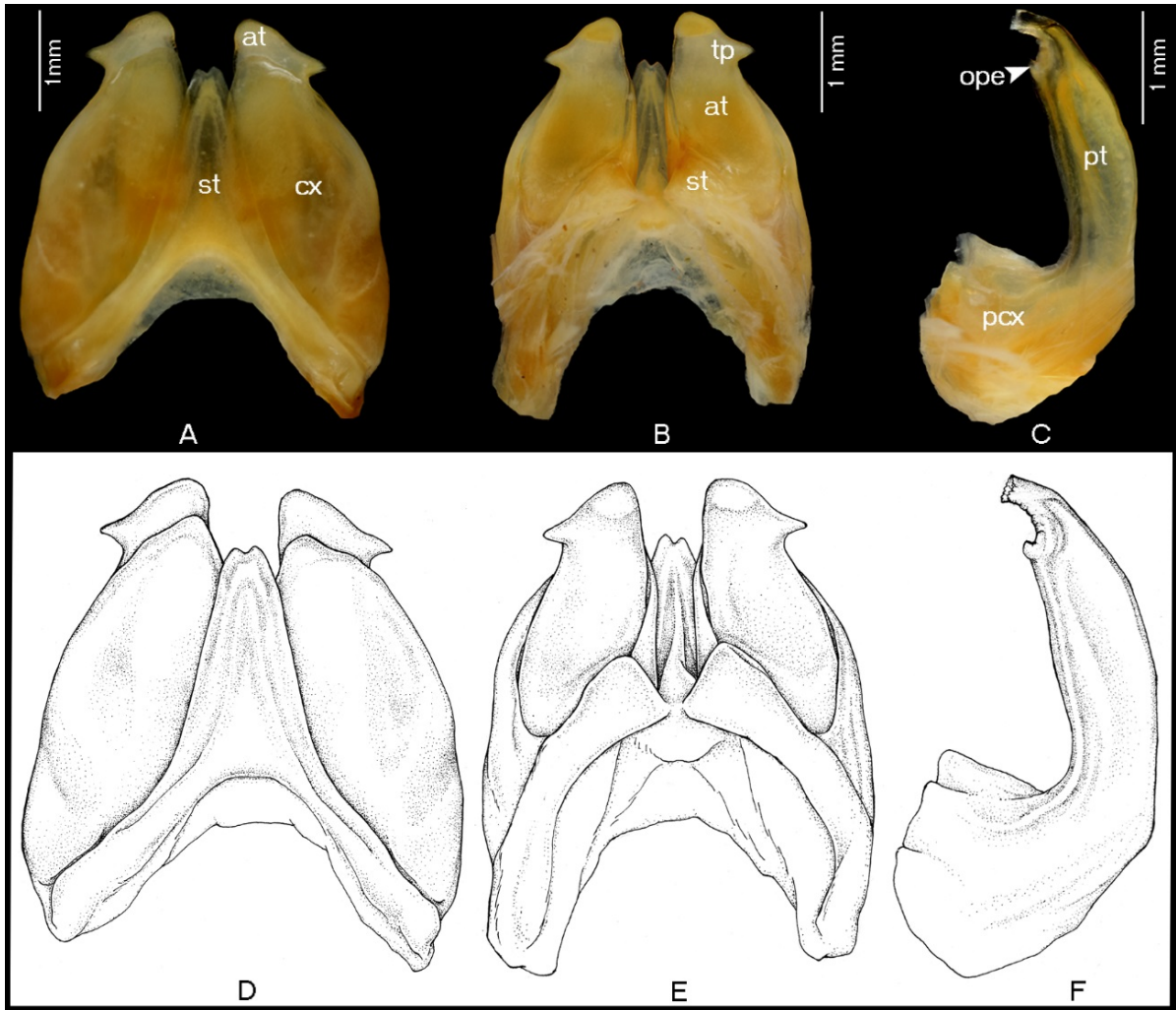


Fig. S3. *Atopochetus* cf. *sumatranus* Hof (specimen from Penchala, Malaysia) gonopods. A: anterior gonopod, anterior view. B: anterior gonopod, posterior view. C: left posterior gonopod. D: anterior gonopod, anterior view drawing. E: anterior gonopod, posterior view drawing. F: left posterior gonopod drawing.

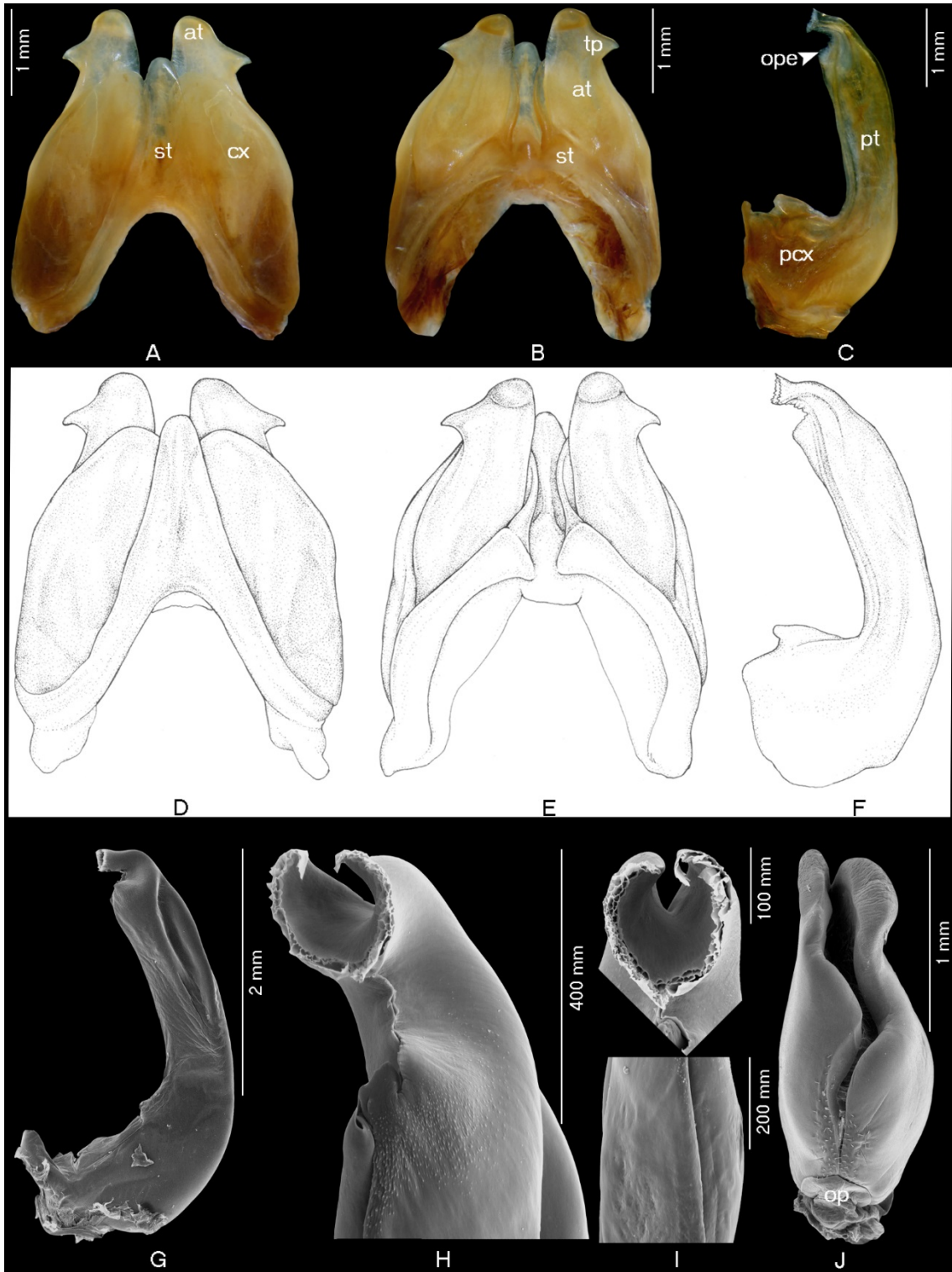


Fig. S4. *Atopochetus cf. sumatranus* GBM (specimen from Gua Batu Madu), gonopods. A: anterior gonopod, anterior view. B: anterior gonopod, posterior view. C: left posterior gonopod. D: anterior gonopod, anterior view drawing. E: anterior gonopod, posterior view drawing. F: left posterior gonopod drawing. G: SEM, left posterior gonopod, posterior-mesal view. H: SEM, tip of posterior gonopod, mesal view. I: SEM, above = distalmost part of posterior gonopod, mesal view, below = mesal part of posterior gonopod, mesal view. J: SEM, female vulva (op = operculum).