

Supplementary material

Assessing threats from coral and crustose coralline algae disease on the reefs of New Caledonia

Greta Aeby^{A,E}, Aline Tribollet^B, Gregory Lasne^C and Thierry Work^D

^AHawaii Institute of Marine Biology, PO Box 1346, Kaneohe, HI 96744, USA.

^BIRD-Sorbonne Universités (UPMC, Univ Paris 6)-CNRS-MNHN, LOCEAN Laboratory, IRD France Nord, 32 Avenida Henri Varagnat, F-93143 Bondy Cedex, France.

^CBIOCENOSE MARINE Sarl, Centre IRD de Nouméa, 98848 Nouméa Cedex, New Caledonia.

^DUS Geological Survey, National Wildlife Health Center, Honolulu Field Station, PO Box 50187, Honolulu, HI 96850, USA.

^ECorresponding author. Email: greta@hawaii.edu

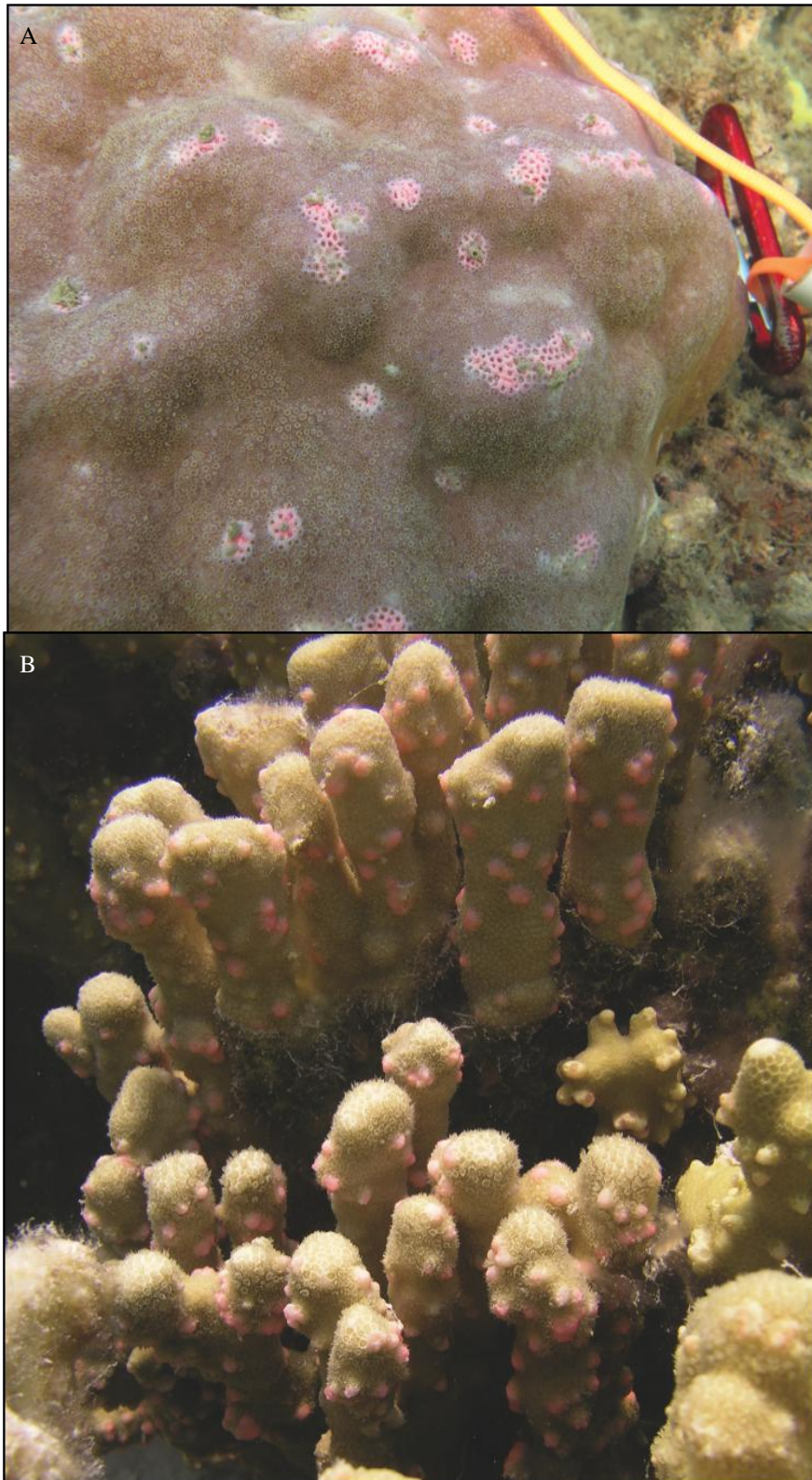


Fig. S1. (a) Photograph of multi-focal pink spot on *Porites* in New Caledonia. Note the reduced swelling and sediment adhering to the pink spots. (b) Photograph of *Porites* trematodiasis in Hawaii. Note the protruberant swelling of the pink spots.