

Supplementary material

Comparative mitogenomic analyses reveal cryptic diversity of the bryozoan *Bugula neritina* Linnaeus, 1758, in the Yellow Sea

Xin Shen^{A,B,C}, Mei Tian^A, Ka Hou Chu^D, Jin Feng Wang^C, Shuai Chen^C, Hui Lian Liu^E, Xiao Heng Zhao^A and Fang Qing Zhao^{C,F}

^AJiangsu Key Laboratory of Marine Biotechnology and Jiangsu Institute of Marine Resources, Huaihai Institute of Technology, Lianyungang 222005, P.R. China.

^BCo-Innovation Center of Jiangsu Marine Bio-industry Technology, Lianyungang 222000, P.R. China.

^CBeijing Institutes of Life Science, Chinese Academy of Sciences, Beijing 100101, P.R. China.

^DSimon F. S. Li Marine Science Laboratory, School of Life Sciences, The Chinese University of Hong Kong, Shatin, NT, Hong Kong, Special Administrative Region, P.R. China.

^EInstitute of Oceanology, Chinese Academy of Sciences, Qingdao 266071, P.R. China.

^FCorresponding author. Email: zhfq@mail.biols.ac.cn

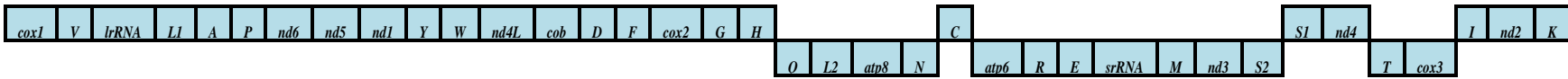
Table S1. Sequences retrieved from GenBank of the *cox1-3P*, *cox1-5P* and *lrRNA* for the *Bugula neritina* complex

The information about sampling locality and geographic region come from previous research (Fehlauer-Ale *et al.* 2014)

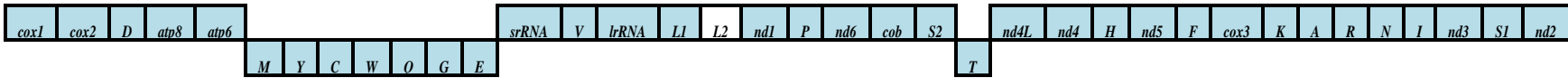
Type	<i>cox1-5P</i>		<i>cox1-3P</i>		<i>lrRNA</i>		Sampling locality	Geographic region
	Accession	Length	Accession	Length	Accession	Length		
S	KC129741	674	KC129865	698	KC129979	441	TSV boat club marina, Townsville, Queensland, Australia	Coral Sea
S	KC129747	674	KC129871	698	KC129985	441	TSV boat club marina, Townsville, Queensland, Australia	Coral Sea
S	KC129743	674	KC129867	698	KC129981	441	TSV boat club marina, Townsville, Queensland, Australia	Coral Sea
S	KC129742	674	KC129866	698	KC129980	441	TSV boat club marina, Townsville, Queensland, Australia	Coral Sea
S	KC129746	674	KC129870	698	KC129984	441	TSV boat club marina, Townsville, Queensland, Australia	Coral Sea
S	KC129744	674	KC129868	698	KC129982	441	TSV boat club marina, Townsville, Queensland, Australia	Coral Sea
S	KC129745	674	KC129869	698	KC129983	443	TSV boat club marina, Townsville, Queensland, Australia	Coral Sea
S	KC129740	674	KC129864	698	KC129978	441	Westsea Phoenix boat, Western Australia, Australia	Eastern Indian Ocean
S	KC129739	674	KC129863	698	KC129977	441	Westsea Phoenix boat, Western Australia, Australia	Eastern Indian Ocean
S	KC129738	674	KC129862	698	KC129976	441	Westsea Phoenix boat, Western Australia, Australia	Eastern I Indian Ocean
S	KC129737	674	KC129861	698	KC129975	441	Westsea Phoenix boat, Western Australia, Australia	Eastern I Indian Ocean
S	KC129735	674	KC129859	698	KC129973	441	Westsea Phoenix boat, Western Australia, Australia	Eastern I Indian Ocean
S	KC129736	674	KC129860	698	KC129974	441	Westsea Phoenix boat, Western Australia, Australia	Eastern I Indian Ocean
S	KC129824	674	KC129942	693	KC130057	441	Marina, A Graña Ferrol, Galizia, Spain	North-eastern Atlantic
S	KC129823	674	JX183877	698	KC130056	441	Marina, A Graña Ferrol, Galizia, Spain	North-eastern Atlantic
S	KC129822	662	KC129941	698	KC130055	441	Marina, A Graña Ferrol, Galizia, Spain	North-eastern Atlantic
S	KC129847	674	KC129963	656			Beaufort Waterfront, North Carolina, USA	North-western Atlantic
D	KC129835	569	KC129952	586	KC130068	443	Fields Landing Marina, Humboldt Bay, northern California, USA	North-eastern Pacific
D	KC129845	636	KC129961	543	JX183895	443	Fields Landing Marina, Humboldt Bay, northern California, USA	North-eastern Pacific
D	KC129844	572	KC129960	574			Fields Landing Marina, Humboldt Bay, northern California, USA	North-eastern Pacific
D	KC129843	569	KC129959	529			Fields Landing Marina, Humboldt Bay, northern California, USA	North-eastern Pacific
D	KC129842	569	KC129958	557			Fields Landing Marina, Humboldt Bay, northern California, USA	North-eastern Pacific
D	KC129841	569	KC129957	543			Fields Landing Marina, Humboldt Bay, northern California, USA	North-eastern Pacific
D	KC129840	569	KC129956	551	KC130072	440	Fields Landing Marina, Humboldt Bay, northern California, USA	North-eastern Pacific
D	KC129839	572	KC129955	550	KC130071	443	Fields Landing Marina, Humboldt Bay, northern California, USA	North-eastern Pacific
D	KC129838	569	JX183884	572	KC130070	443	Fields Landing Marina, Humboldt Bay, northern California, USA	North-eastern Pacific
D	KC129837	569	KC129954	586	KC130069	443	Fields Landing Marina, Humboldt Bay, northern California, USA	North-eastern Pacific
D	KC129836	569	KC129953	552	JX183894	443	Fields Landing Marina, Humboldt Bay, northern California, USA	North-eastern Pacific
D	KC129833	569					Fields Landing Marina, Humboldt Bay, northern California, USA	North-eastern Pacific
D	KC129834	569	KC129951	543	KC130067	443	Fields Landing Marina, Humboldt Bay, northern California, USA	North-eastern Pacific
N	KC129748	674	JX183882	698	KC129986	445	TSV boat club marina, Townsville, Queensland, Australia	Coral Sea

Type	<i>coxI</i> -5P		<i>coxI</i> -3P		<i>lrRNA</i>		Sampling locality	Geographic region
	Accession	Length	Accession	Length	Accession	Length		
N	KC129734	601					Whistlestop Lagoon, Elkhorn Slough, California, USA	North-eastern Pacific
N	KC129721	674			KC129964	390	Beaufort Waterfront, northern Carolina, USA	North-western Atlantic
N	KC129830	674	KC129947	698	KC130064	445	Indian River Marina, Delaware, USA	North-western Atlantic
N			KC129948	698	JX183897	445	Indian River Marina, Delaware, USA	North-western Atlantic
N			JX183881	698	KC130059	445	Long Island, New York City, New York, USA	North-western Atlantic
N	KC129825	674	KC129943	597	KC130058	445	Long Island, New York City, New York, USA	North-western Atlantic
N	KC129811	674	KC129930	698	KC130044	445	Oyster Boat Landing, Virginia, USA	North-western Atlantic
N	KC129810	674			JX183896	445	Oyster Boat Landing, Virginia, USA	North-western Atlantic
N	KC129812	674	KC129931	698	KC130045	445	Oyster Boat Landing, Virginia, USA	North-western Atlantic

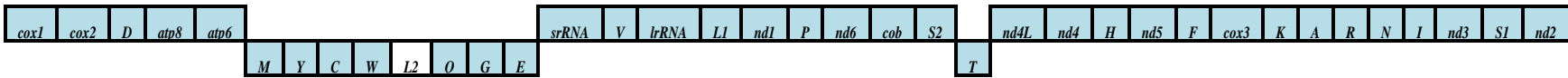
Aplysia (*A. californica* and *A. dactylomela*)



Conus (*C. consors*)



Conus (*C. textile*)



Crassostrea (*C. angulata*, *C. gigas* and *C. sikamea*)



Haliotis (*H. laevigata* and *H. rubra*)



Haliotis (*H. tuberculata*)



Hyriopsis (*H. cumingii* and *H. schlegelii*)



Meretrix (*M. lusoria*)

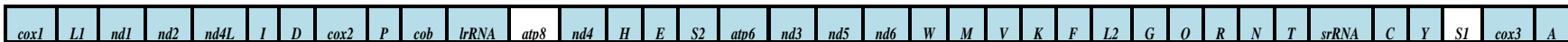
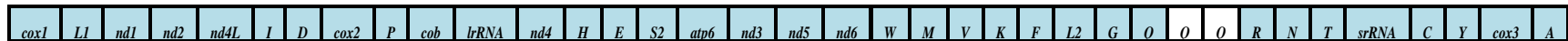
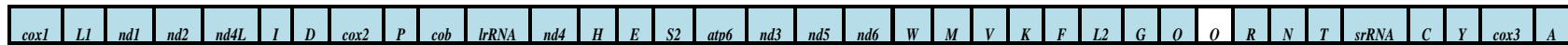


Fig. S1. Gene arrangements of 26 mitochondrial genomes from *Lophotrochozoa*. Conserved genes within each genus are represented by shading.

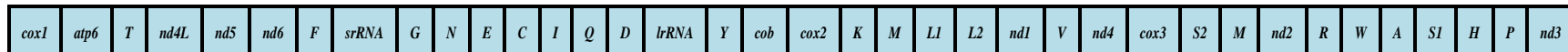
Meretrix (M. meretrix)



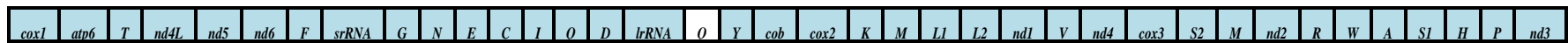
Meretrix (M. petechialis)



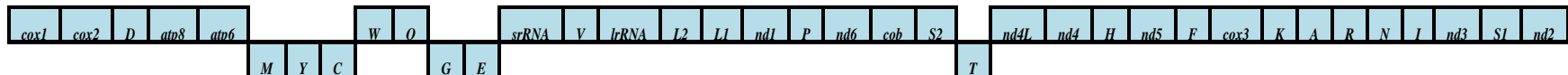
Mytilus (M. edulis and M. galloprovincialis)



Mytilus (M. trossulus)



Potamopyrgus (P. antipodarum and P. estuarinus)



Sepiella (S. inermis and S. japonica)



Sypharochiton (S. pelliserpentis and S. sinclairi)



Urechis (U. caupo and U. unicinctus)



Fig. S1. (Cont.)

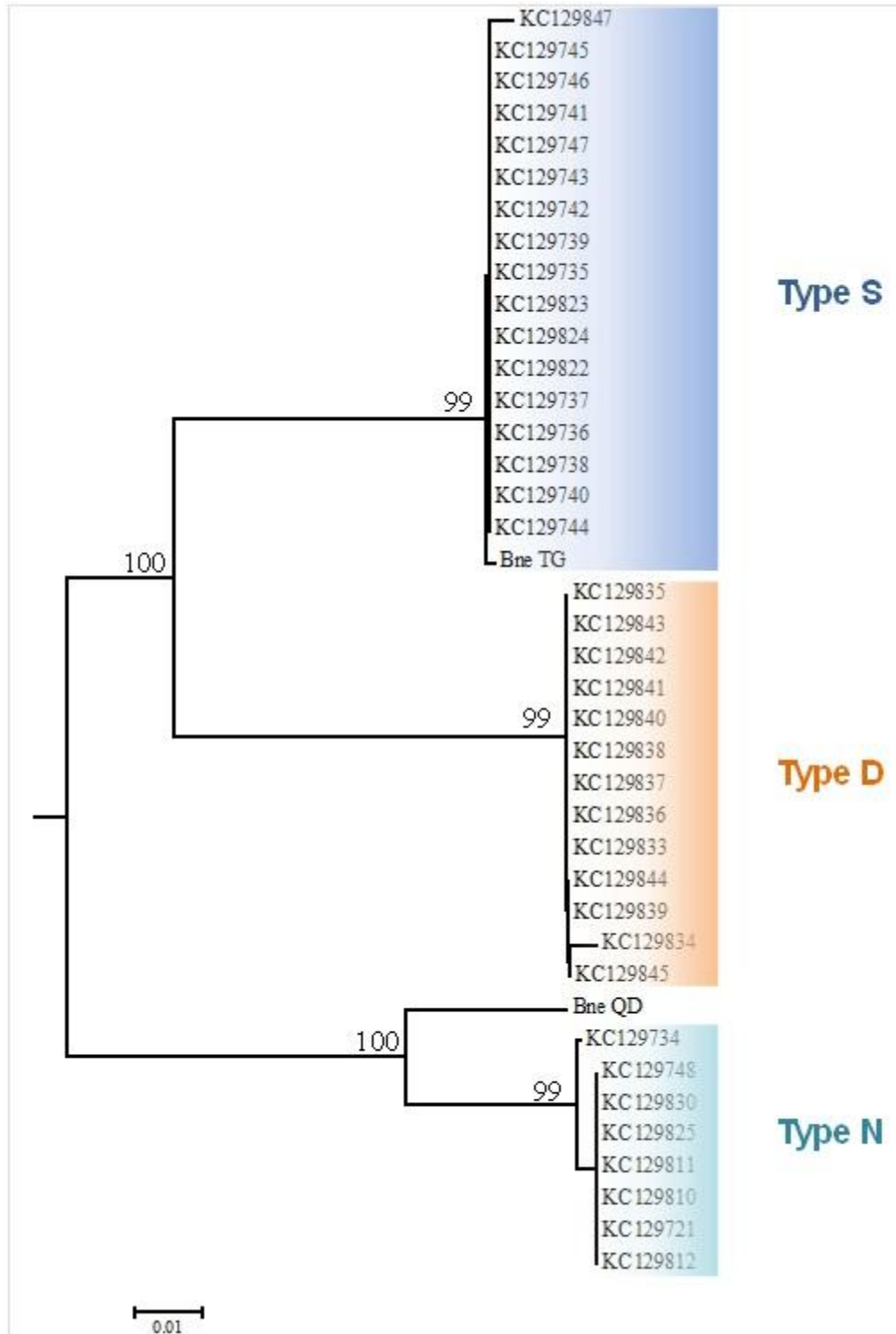


Fig. S2. Phylogenetic tree based on 40 *Bugula neritina* *cox1*-5P sequences.

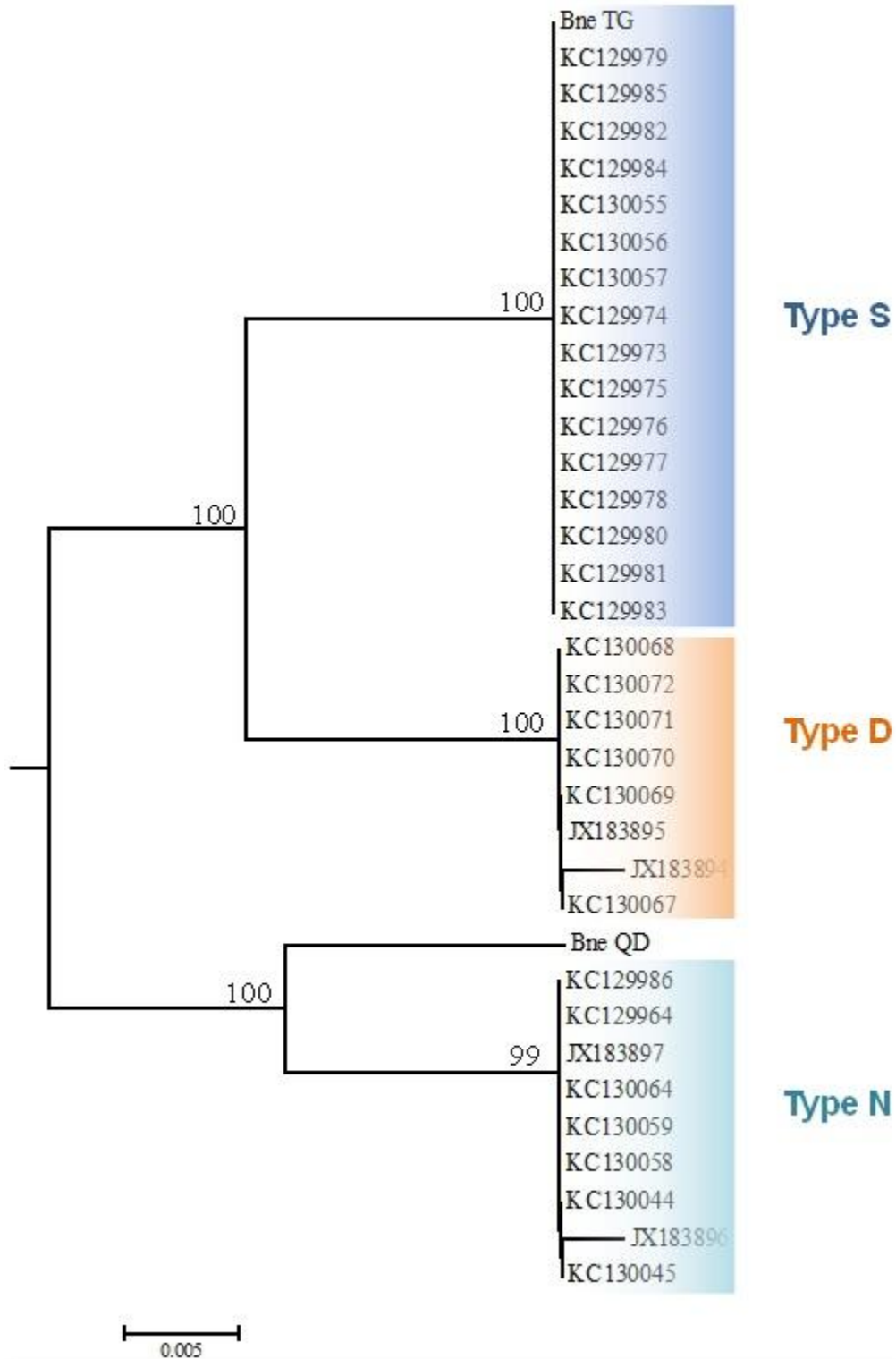


Fig. S3. Phylogenetic tree based on 35 *Bugula neritina* lrRNA sequences.

Reference

- Fehlauer-Ale, K. H., Mackie, J. A., Lim-Fong, G. E., Ale, E., Pie, M. R., and Waeschenbach, A. (2014).
Cryptic species in the cosmopolitan *Bugula neritina* complex (Bryozoa, Cheilostomata). *Zoologica Scripta* **43**, 193–205. doi:10.1111/zsc.12042