

Supplementary material

Biogenic processes or terrigenous inputs? Permanent water bodies of the Northern Ponds in the Lake MacLeod basin of Western Australia

Christopher R. J. Kavazos^{A,D}, Megan J. Huggett^{A,B}, Ute Mueller^C and Pierre Horwitz^A

^ACentre for Ecosystem Management, School of Science, Edith Cowan University, 270 Joondalup Drive, Joondalup, WA 6027, Australia.

^BCentre for Marine Ecosystems Research, School of Science, Edith Cowan University, 270 Joondalup Drive, Joondalup, WA 6027, Australia.

^CSchool of Engineering, Edith Cowan University, 270 Joondalup Drive, Joondalup, WA 6027, Australia.

^DCorresponding author. Email: c.kavazos@ecu.edu.au

This document contains the bathymetric and temperature-profile maps for each of the eight study ponds. All maps were produced following the kriging and simulation analysis detailed in the Materials and methods section of the paper. Latitude and longitude units are Mercator metres, which correspond to distances in metres. Temperature-profile maps could not be produced for Cygnet Pond because of large fluctuation in water temperature during the period when measurements were taken.

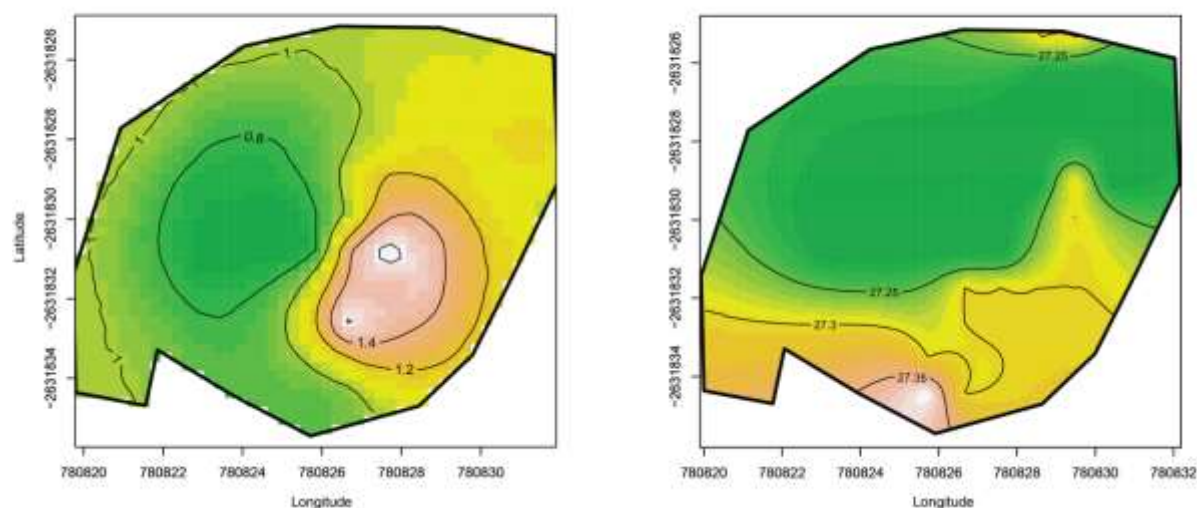


Fig. S1. Bathymetric map of Pete's Vent with depth contours in metres (left) and water temperature (°C; right). All measurements were taken in July 2013.

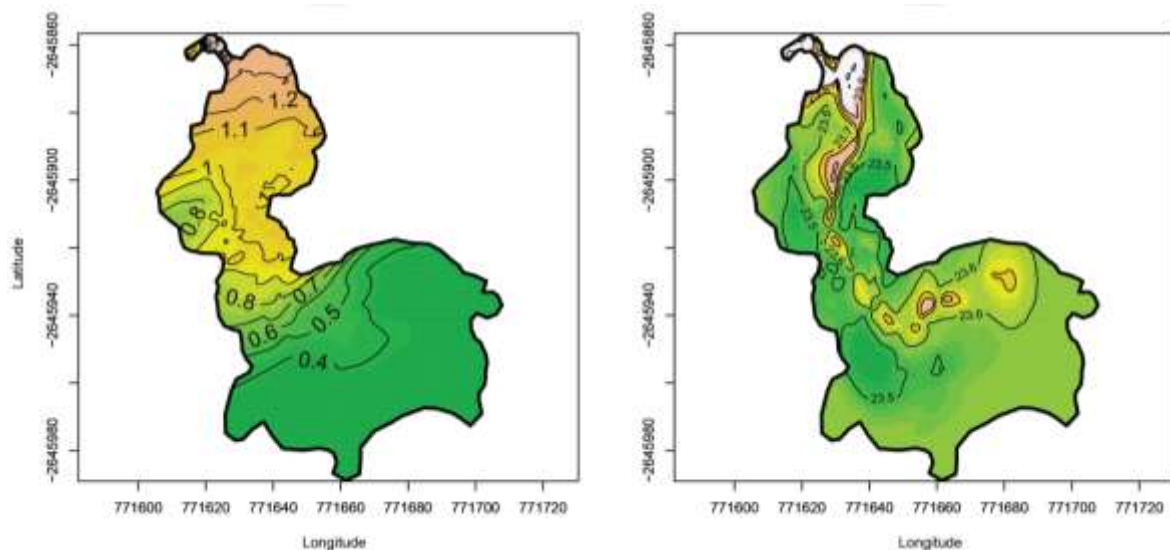


Fig. S2. Bathymetric map of Donut Pond with depth contours in metres (left) and water temperature ($^{\circ}\text{C}$; right). All measurements were taken in July 2013.

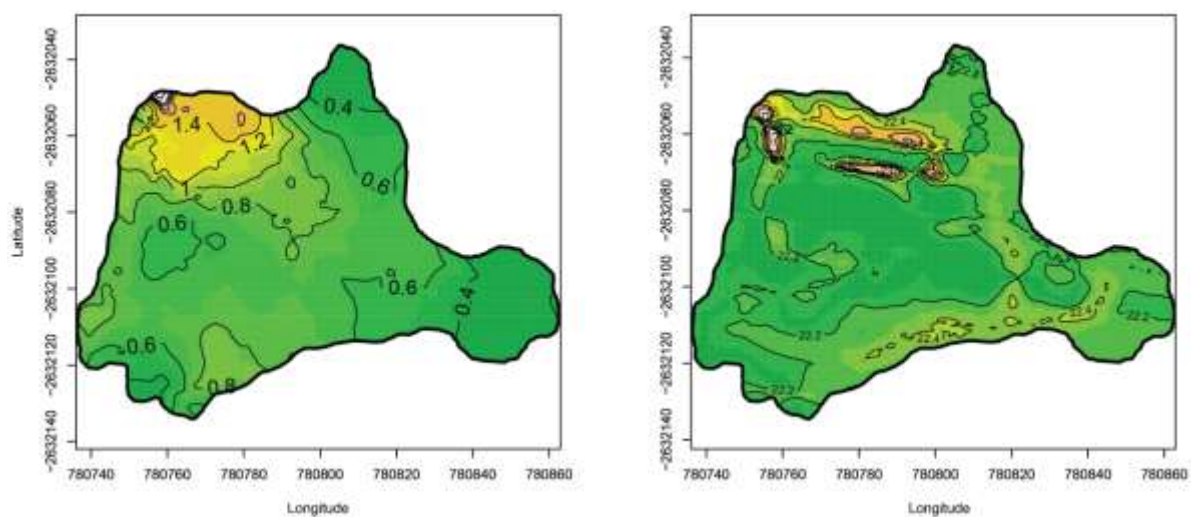


Fig. S3. Bathymetric map of Annie's Pond with depth contours in metres (left) and water temperature ($^{\circ}\text{C}$; right). All measurements were taken in July 2013.

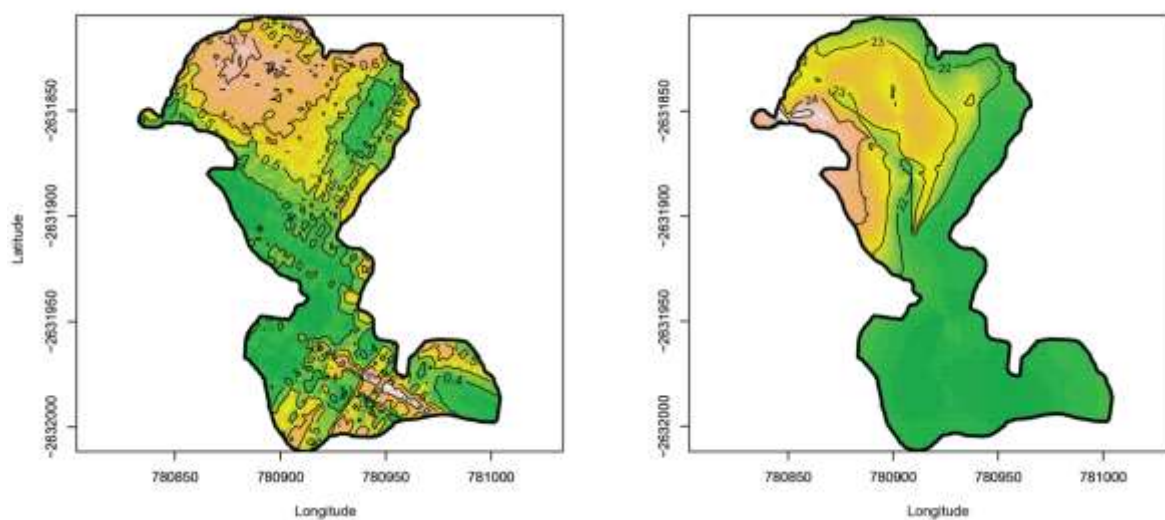


Fig. S4. Bathymetric map of Pete's Pond with depth contours in metres (left) and water temperature ($^{\circ}\text{C}$; right). All measurements were taken in July 2013.

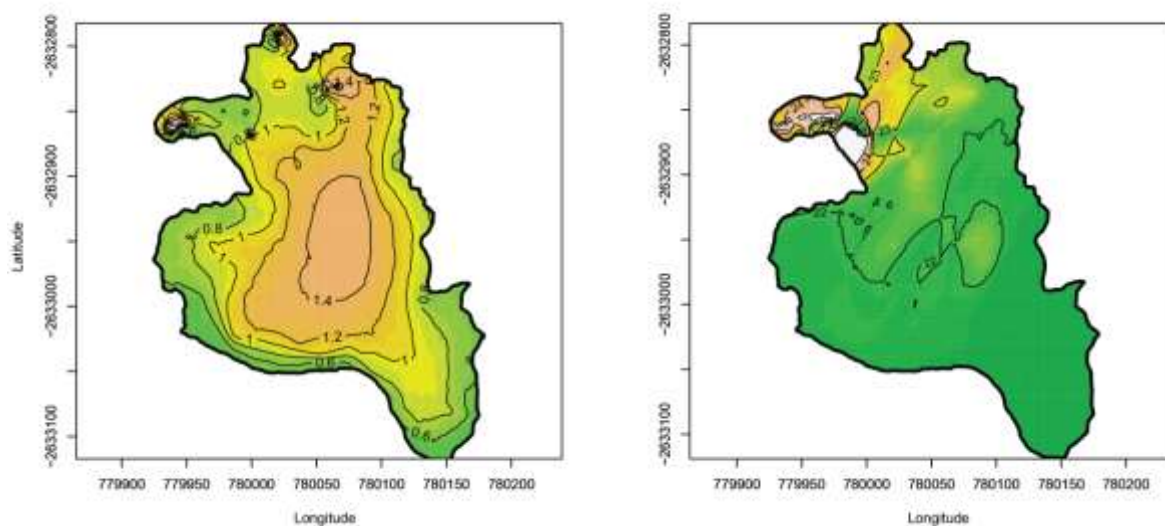


Fig. S5. Bathymetric map of Whistler's Pond with depth contours in metres (left) and water temperature ($^{\circ}\text{C}$; right). All measurements were taken in July 2013.

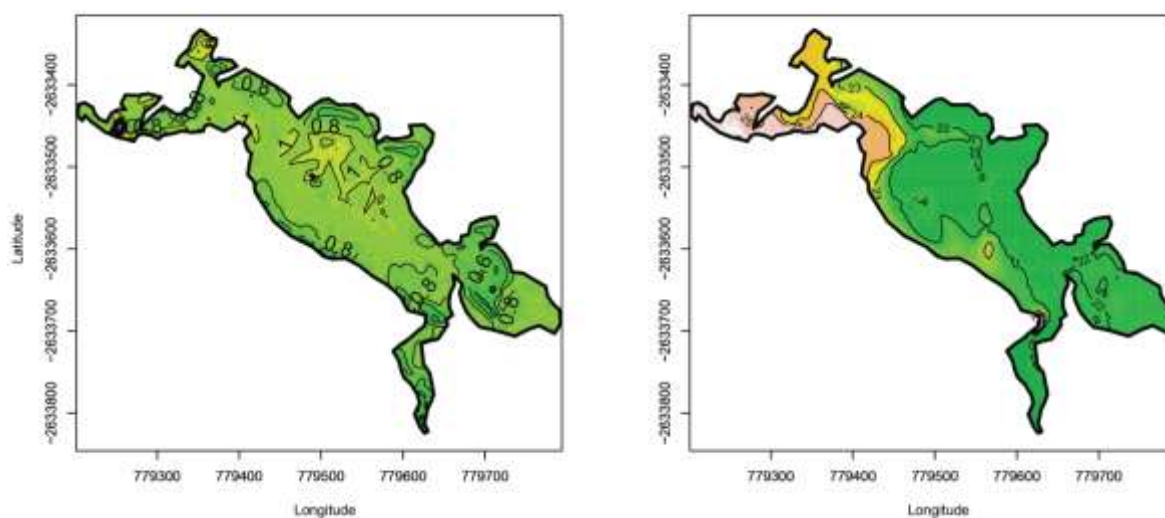


Fig. S6. Bathymetric map of Harjie's Pond with depth contours in metres (left) and water temperature ($^{\circ}\text{C}$; right). All measurements were taken in July 2013.

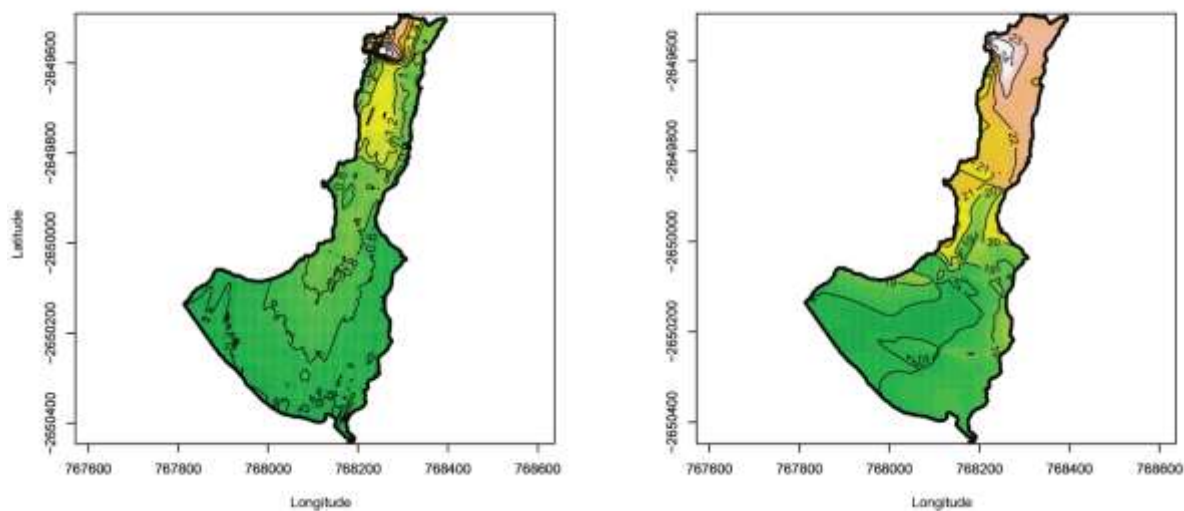


Fig. S7. Bathymetric map of Jana's Vent with depth contours in metres (left) and water temperature ($^{\circ}\text{C}$; right). All measurements were taken in July 2013.

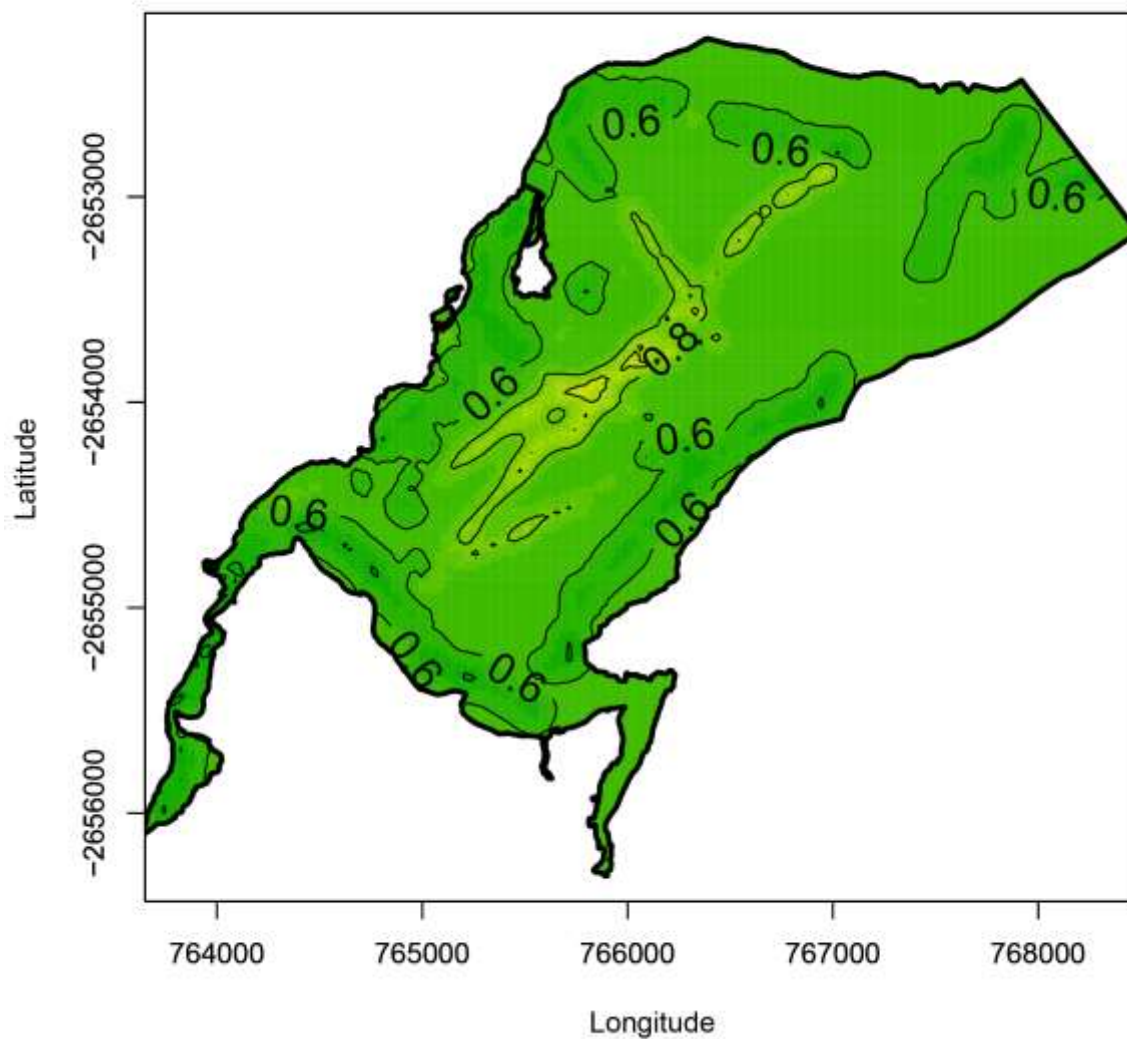


Fig. S8. Bathymetric map of Cygnet Pond. Goat Island can be seen near the western shore. Contours are in metres. All measurements were taken in July 2013.