

Supplementary material

Hydrology and water temperature influence recruitment dynamics of the threatened silver perch *Bidyanus bidyanus* in a regulated lowland river

Zeb Tonkin^{A,G}, Ivor Stuart^A, Adrian Kitchingman^A, Jason D. Thiem^{B,F}, Brenton Zampatti^C,
Graeme Hackett^A, Wayne Koster^A, John Koehn^A, John Morrongiello^D, Martin Mallen-Cooper^{E,F}, and
Jarod Lyon^A

^AArthur Rylah Institute for Environmental Research, Department of Environment, Land,
Water and Planning, 123 Brown Street, Heidelberg, Vic. 3084, Australia.

^BDepartment of Primary Industries, Narrandera Fisheries Centre, PO Box 182,
Narrandera, NSW 2700, Australia.

^CSouth Australian Research and Development Institute (Aquatic Sciences), PO Box 120,
Henley Beach, SA 5022, Australia.

^DSchool of BioSciences, The University of Melbourne, Melbourne, Vic. 3010, Australia.

^EFishway Consulting Services, Saint Ives, NSW 2075, Australia.

^FInstitute for Land, Water and Society, Charles Sturt University, Albury, NSW 2640, Australia.

^GCorresponding author. Email: zeb.tonkin@delwp.vic.gov.au

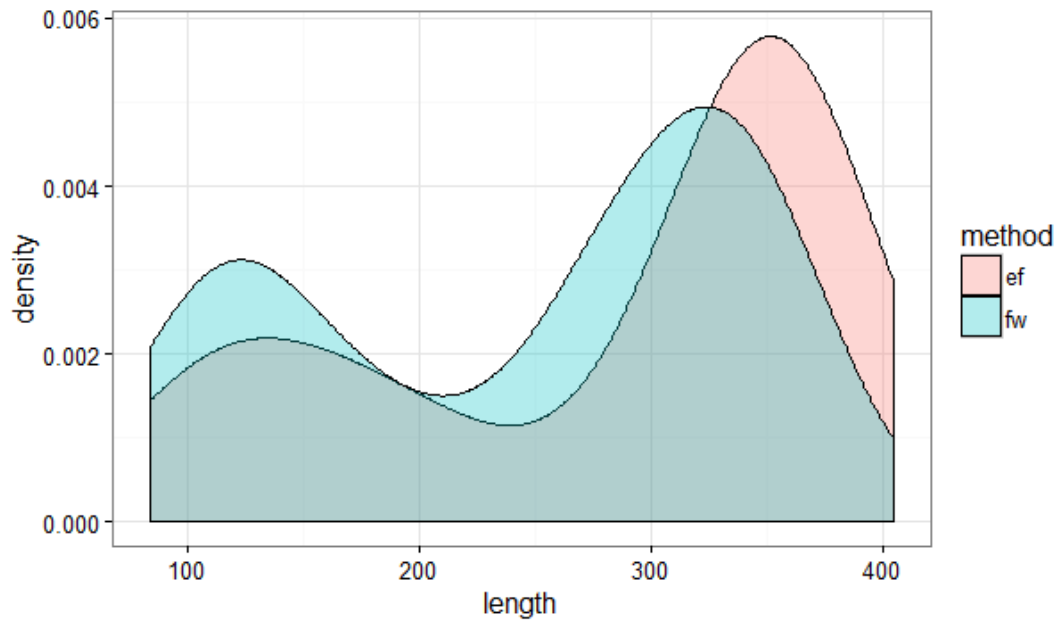


Fig. S1. Population structure comparison between electrofishing and fishway samples.

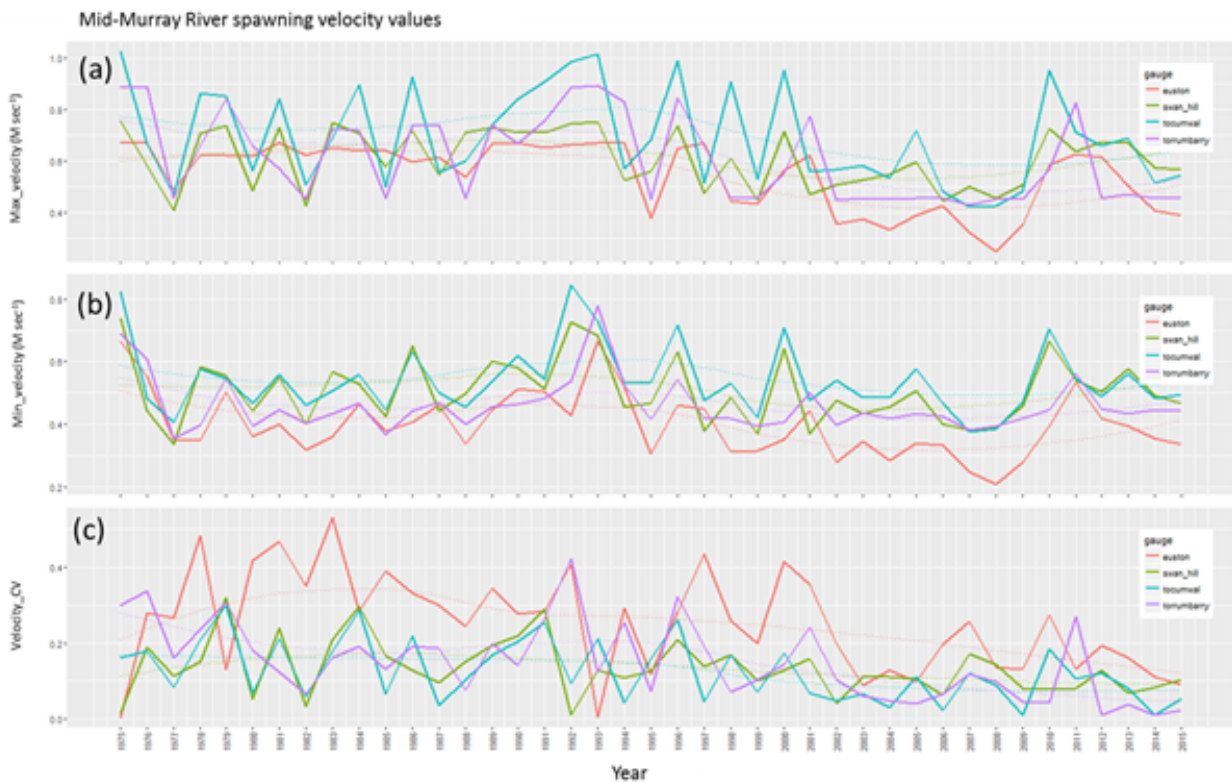


Fig. S2. (a) Maximum daily water velocity, (b) minimum daily water velocity, and (c) coefficient of variation of daily water velocity at five gauges along the mid-Murray River during core silver perch spawning season (November–December), 1975–2015.