

Supplementary material

Thermal adaptation of Japanese sand lance (*Ammodytes personatus*) in different ocean currents revealed by the cytochrome-*b* gene

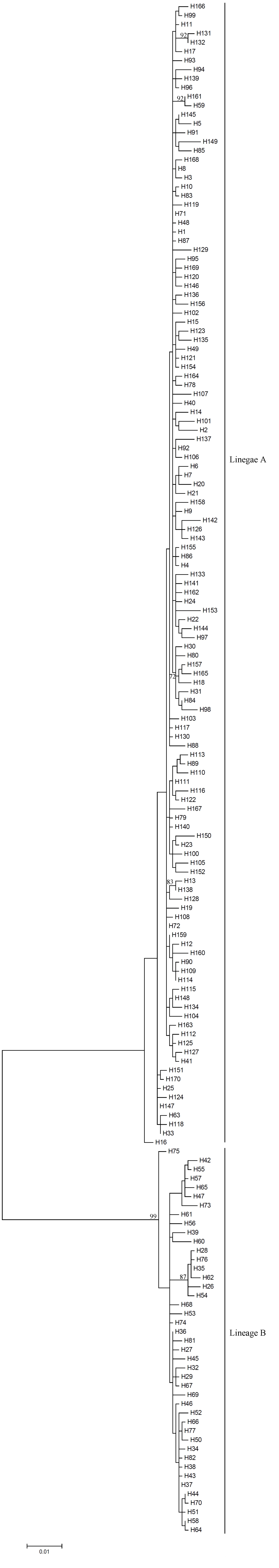
Zhaochao Deng^A, Shengyong Xu^{A,B}, Tianxiang Gao^A and Zhiqiang Han^{A,C}

^AFishery College, Zhejiang Ocean University, 1 Haida South Road, Zhoushan, Zhejiang, 316002, PR China.

^BFishery College, Ocean University of China, 5 Yushan Road, Qingdao, 266003, PR China.

^CCorresponding author. Email: d6339124@163.com

Fig. S1. The full maximum likelihood tree constructed using Tamura and Nei model for cytochrome-*b* (*Cytb*) haplotypes of *A. personatus*. Bootstrap supports of >70% in 1000 replicates are shown. See following page.



Lineage A

Lineage B

0.01