

Supplementary material

Integrating fish into irrigation infrastructure projects in Myanmar: rice-fish what if...?

*Mark J. Dubois^{A,I}, Michael Akester^A, Kimio Leemans^A, Shwu Jiau Teoh^B, Alex Stuart^C,
Aung Myo Than^D, Su Su San^D, Nilar Shein^E, Mansoor Leh^F, Palal Moet Moet^G
and Ando M. Radanielson^H*

^AInternational Center for Living Aquatic Resources – WorldFish Myanmar, Department of Fisheries
Bayint Naung Road, West Gyogone, Insein Township, Yangon, 11011, Myanmar.

^BInternational Center for Living Aquatic Resources – WorldFish Headquarters, Jalan Batu Maung,
Batu Maung, 11960 Bayan Lepas, Penang, Malaysia.

^CInternational Rice Research Institute (IRRI) – Indonesia Office, ICFORD Building,
Jalan Merdeka 147, Bogor 16111, Indonesia.

^DIRRI, Seed Division Compound, Department of Agriculture, Gyogone, Insein Road, Yangon,
11011, Myanmar.

^EDepartment of Fisheries, Ministry of Agriculture, Livestock and Irrigation, Bayint Naung Road,
West Gyogone, Insein Township, Yangon, 11011, Myanmar.

^FThe International Water Management Institute, IWMI South East Asia Office,
c/o National Agriculture and Forestry Research Institute (NAFRI), PO Box 4199,
Ban Nongviengkham, Xaythany District, Vientiane, Lao PDR.

^GInternational Water Management Institute (IWMI), Irrigation Head Office, Hnin Si Road, Yankin,
Yangon, 11081, Myanmar.

^HUniversity of Southern Queensland, Institute for Life Sciences and Environment,
Centre for Sustainable Agricultural Systems, West Street, Toowoomba, Qld 4350, Australia.

^ICorresponding author. Email: m.dubois@cgiar.org

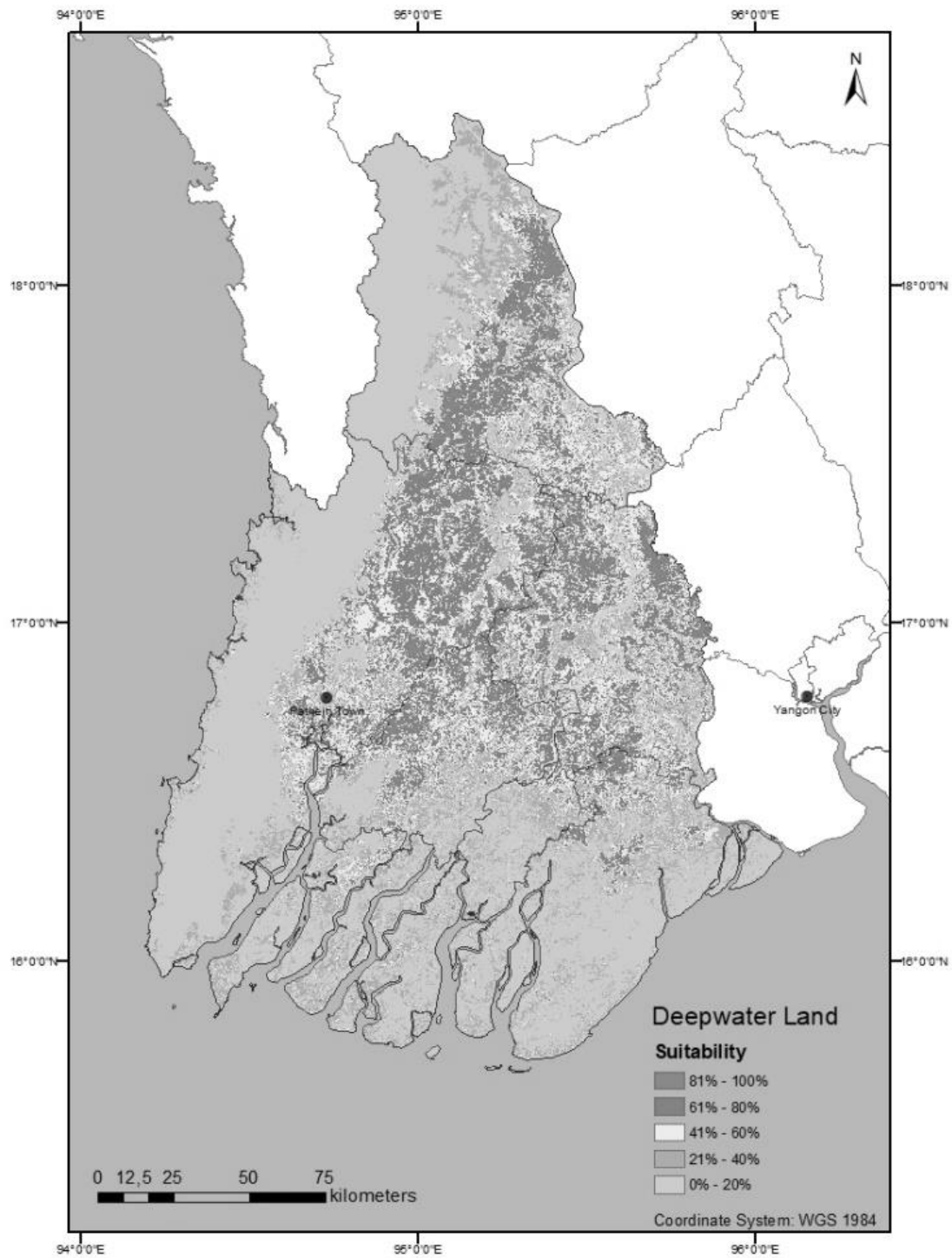


Fig. S1. Deepwater land rice suitability map in the Ayeyarwady Delta. Source Leh *et al.* (2019).

References

- Leh, M., Schulte-Kellinghaus, N., Rebelo, L.-M., De Silva, S., and Moet, P. (2019) Hydrologic characterization of different rice environments in the Ayeyarwady Delta, Myanmar. 2018 project report on testing adaptation in flood based resource management. International Water Management Institute, Colombo, Sri Lanka.