

Supplementary material

Genetic characterisation of the spiny dogfish *Squalus acanthias* in the Adriatic Sea: evidence for high genetic diversity and an Atlantic–South Pacific origin

Romana Gračan^A, Bojan Lazar^{B,C}, Sara Zupan^B and Elena Bužan^{B,D,E}

^AUniversity of Zagreb, Faculty of Science, Department of Biology, Division of Zoology, Roosevelt Square 6, HR-10000 Zagreb, Croatia.

^BUniversity of Primorska, Faculty of Mathematics, Natural Sciences and Information Technologies, Department of Biodiversity, Glagoljaška 8, SI-6000 Koper, Slovenia.

^CJuraj Dobrila University of Pula, Marine Science Program, Zagrebačka 30, HR-52100 Pula, Croatia.

^DEnvironmental Protection College, Trg mladosti 7, SI-3320 Velenje, Slovenia.

^ECorresponding author. Email: elena.buzan@upr.si

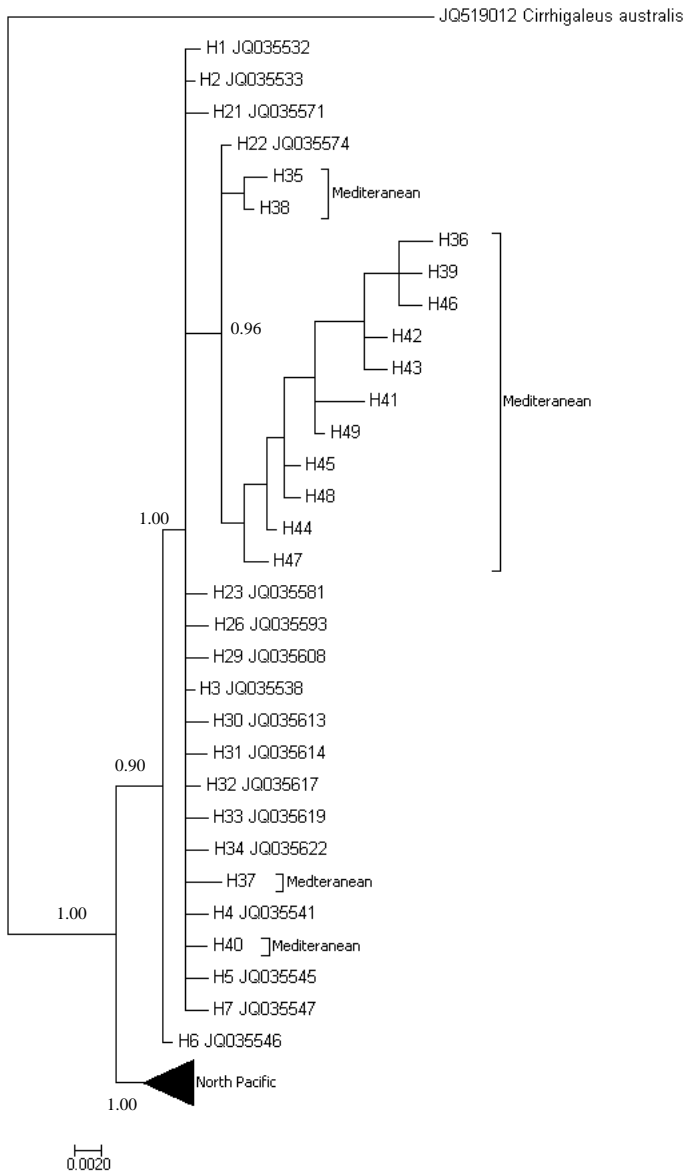


Fig S1. Bayesian inference tree for all ND2 haplotypes for the spiny dogfish (*Squalus acanthias*) using MrBayes programme. Branch support was estimated by computing the local posterior probability.