

Supplementary Material

Sustained high CO₂ concentrations and fluxes from Australia's largest river system

Sima Bargrizan^{A,B}, Tapas K. Biswas^B, Klaus D. Joehnk^B and Luke M. Mosley^{A,}*

^ASchool of Biological Sciences, University of Adelaide, Adelaide, SA 5001, Australia.

^BCSIRO, Black Mountain, Canberra, ACT 2601, Australia.

*Correspondence to: Email: uke.mosley@adelaide.edu.au

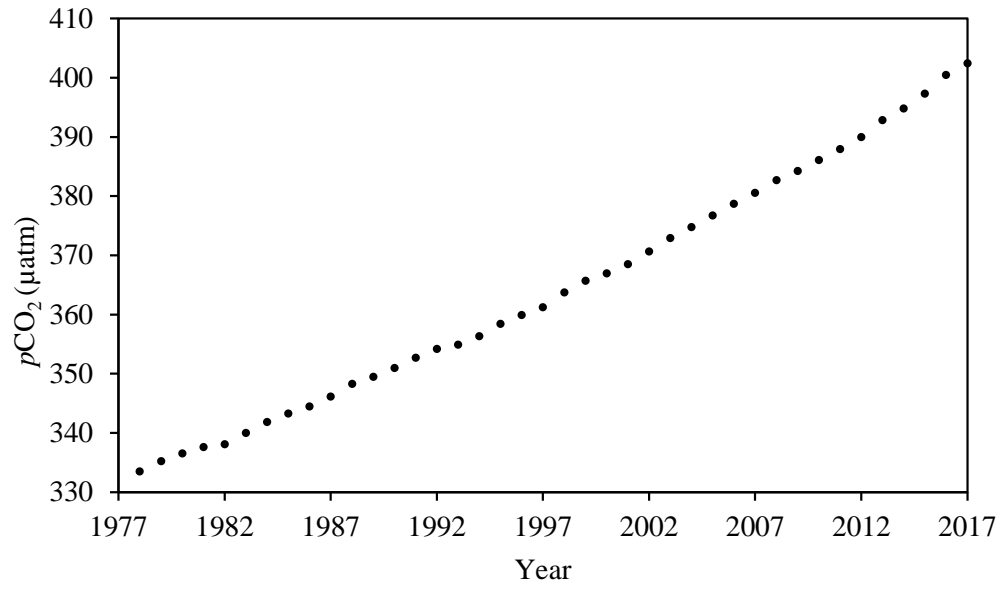
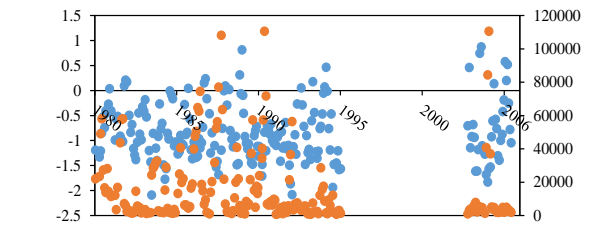
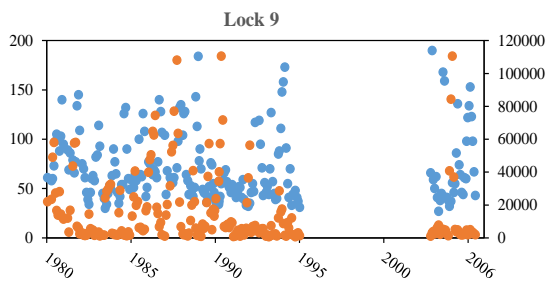
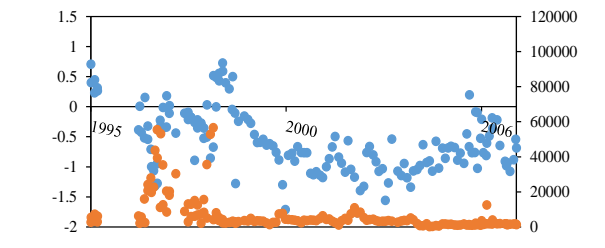
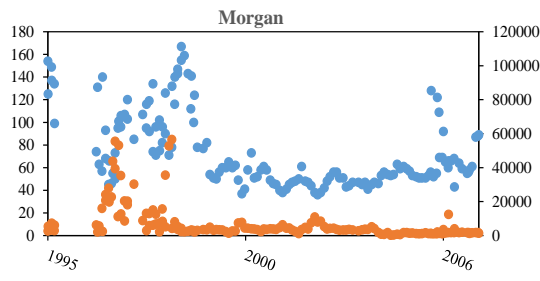
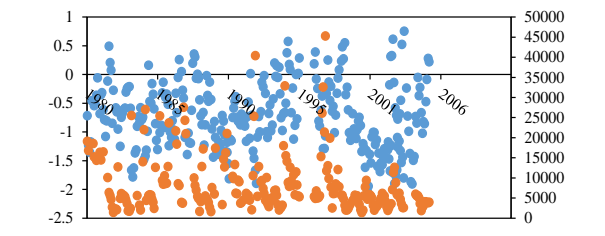
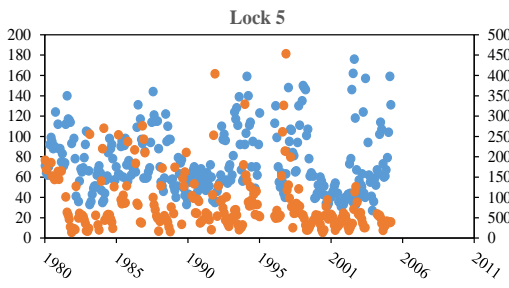
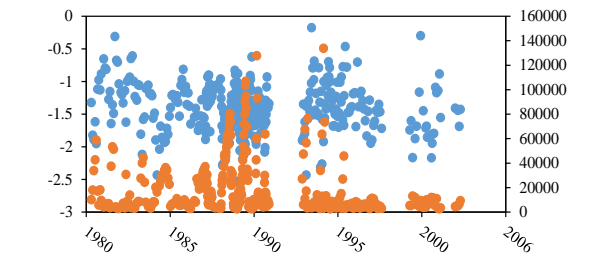
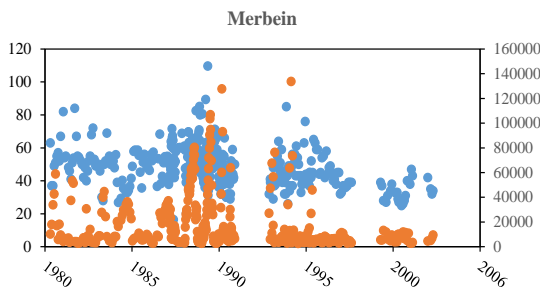
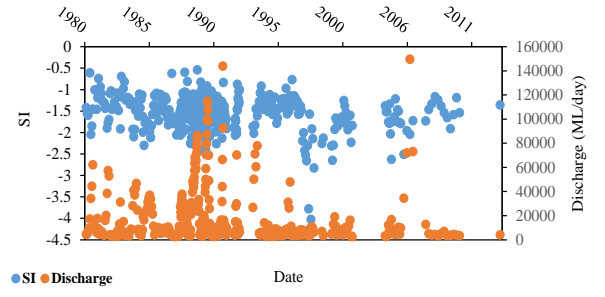
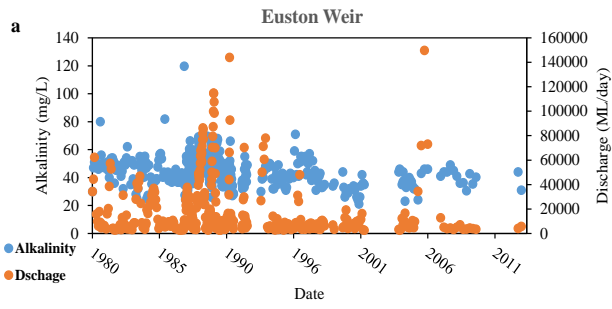


Fig. S1. Atmospheric $p\text{CO}_2$ (μatm) at Cape Grim in Tasmania from 1978 to 2017. Data available at: <https://www.csiro.au/en/research/natural-environment/atmosphere/Latest-greenhouse-gas-data>.



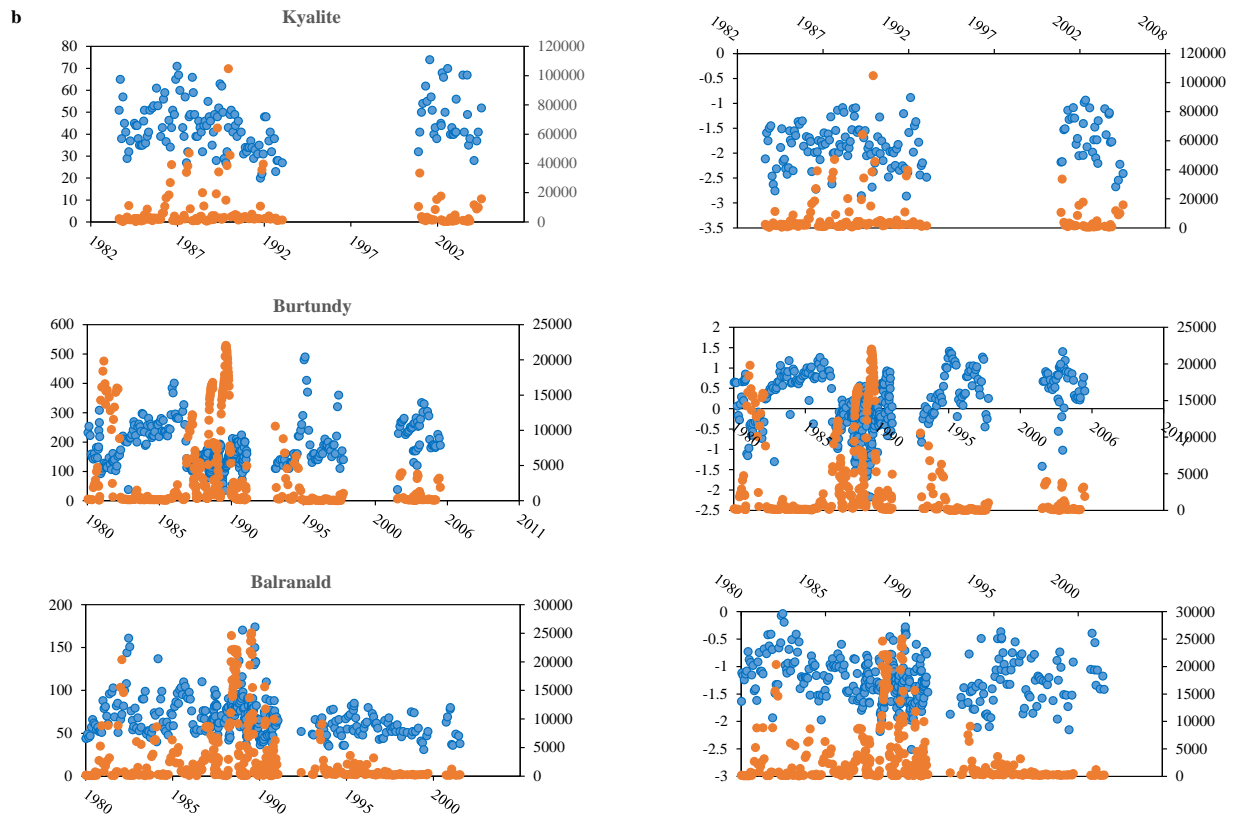


Fig. S2. Timeseries of (left) alkalinity and (right) calcite saturation index (SI), along with discharge (secondary y axis, ML day^{-1}) the River Murray from 1978-2017 for a) main channel and b) tributary sites. Please note that data from some sites is not shown here due to a lack of discharge data.