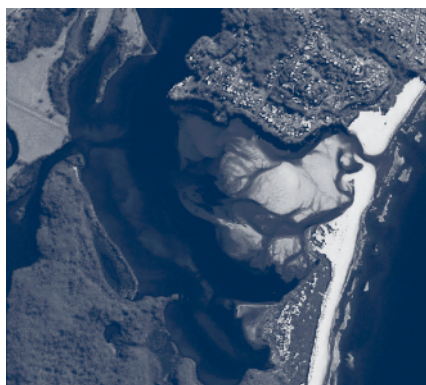


## Cover

Pérez-Matus *et al.* (p. 1069) found that the diversity and distribution of fishes on shallow, subtidal reefs in northern Chile is strongly affected by species composition and percentage cover of the microhabitat. Species richness and diversity of fishes was highest in sites where the kelp canopy was composed of two species and where kelp was most dense.



Satellite image of the entrance to Tuross Lake estuary, showing an extensive flood tide delta within the estuary. Drought conditions in 2006 resulted in the closure of the estuary mouth as river flow was unable to maintain an open entrance channel. The impact of floods and droughts on the opening regime of the Tuross Lake estuary mouth is examined in Rustomji (p. 1108). Source: © DEPARTMENT OF LANDS SIX Portal [www.lands.nsw.gov.au](http://www.lands.nsw.gov.au)

## CONTENTS

Community structure of temperate reef fishes in kelp-dominated subtidal habitats of northern Chile <i>A. Pérez-Matus, L. A. Ferry-Graham, A. Cea and J. A. Vásquez</i>	1069
Seasonal and diel comparisons of the diets of four dominant fish species within the main channel and flood-zone of a small intermittently open estuary in south-eastern Australia <i>A. Becker and L. J. B. Laurenson</i>	1086
Rapid changes in life-history characteristics of a long-lived temperate reef fish <i>P. E. Ziegler, J. M. Lyle, M. Haddon and G. P. Ewing</i>	1096
Flood and drought impacts on the opening regime of a wave-dominated estuary <i>P. Rustomji</i>	1108
Niche shifts and local competition between two coral reef fishes at their geographic boundary <i>A. J. Limbourn, G. P. Jones, P. L. Munday and M. Srinivasan</i>	1120
Mitochondrial DNA variation of the west-coast rock lobster, <i>Jasus lalandii</i> : marked genetic diversity differences among sampling sites <i>C. A. Matthee, A. C. Cockcroft, K. Gopal and S. von der Heyden</i>	1130
Interannual variations in cephalopod consumption by albatrosses at South Georgia: implications for future commercial exploitation of cephalopods <i>J. C. Xavier, A. G. Wood, P. G. Rodhouse and J. P. Croxall</i>	1136
Habitat complexity and predation risk determine juvenile snapper ( <i>Pagrus auratus</i> ) and goatfish ( <i>Upeneichthys lineatus</i> ) behaviour and distribution <i>P. M. Ross, S. F. Thrush, J. C. Montgomery, J. W. Walker and D. M. Parsons</i>	1144
Unusual source of food: impact of dead siblings on encapsulated embryo development of <i>Crepidatella fecunda</i> (Gastropoda: Calyptraeidae) <i>V. M. Cubillos, O. R. Chaparro, Y. A. Montiel and D. Véliz</i>	1152

**EARLY ALERT** Sign-up at [www.publish.csiro.au/journals/mfr](http://www.publish.csiro.au/journals/mfr) for our electronic early alert and receive the next table of contents weeks in advance of the print version