

doi:10.1071/PC21004_AC

© The Authors 2022

Pacific Conservation Biology

Whitebait conservation and protected areas at non-tidal rivermouths:
integrating biogeography and environmental controls on īnanga
(*Galaxias maculatus*) spawning grounds

Shane Orchard^{A,B,C} and David R. Schiel^A

^AMarine Ecology Research Group, University of Canterbury, Christchurch, New Zealand.

^BWaterways Centre for Freshwater Management, University of Canterbury and Lincoln University, Christchurch, New Zealand.

^CCorresponding author. Email: s.orchard@waterlink.nz

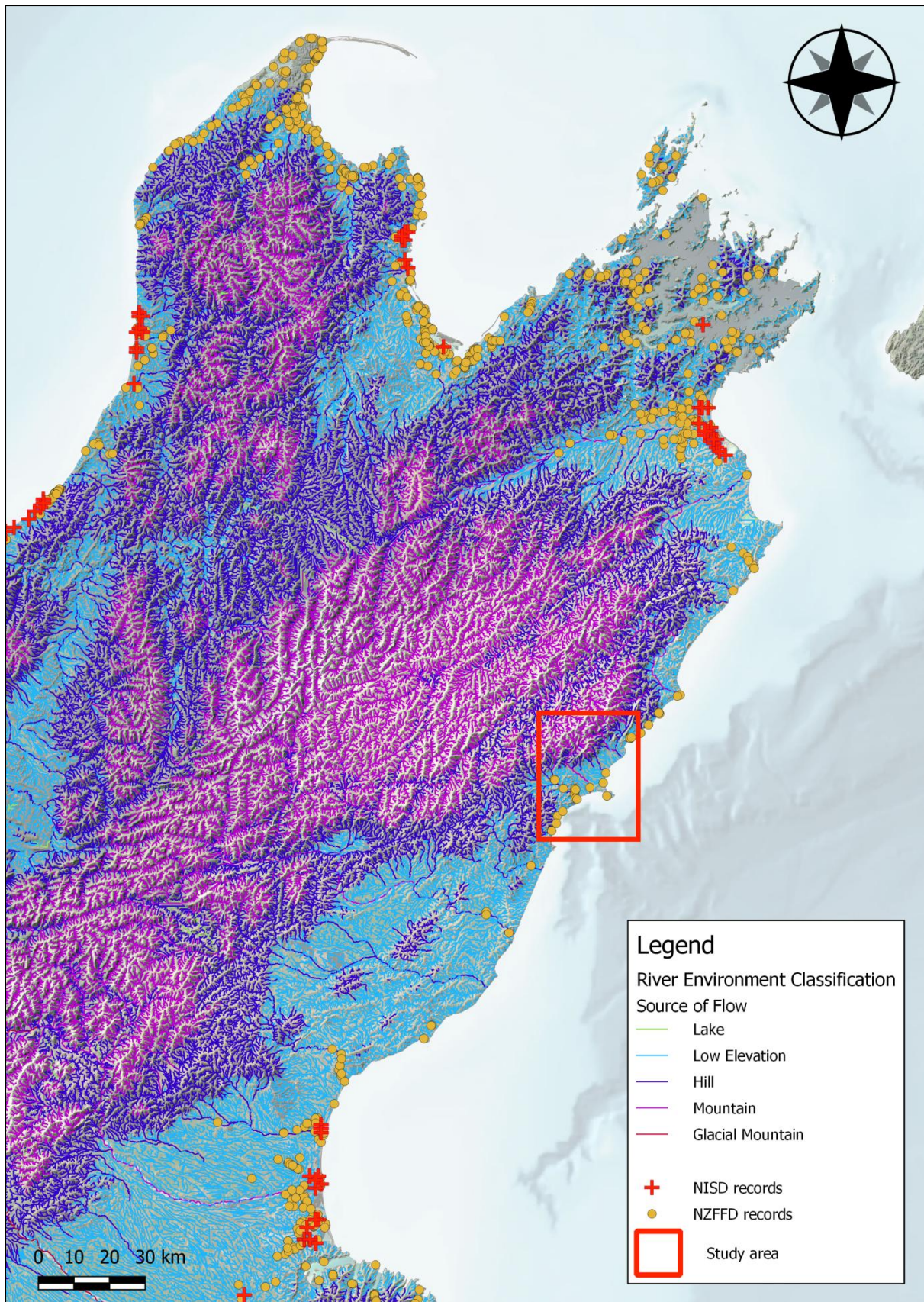


Fig. S1. New Zealand Freshwater Fish Database (NZFFD) and National Īnanga Spawning Database (NISD) records for *Galaxias maculatus* in the northern half of New Zealand's South Island and study area on the Kaikōura coast. Note lack of spawning records in this region despite *G. maculatus* presence. Waterways are visualised according to source of flow data from the River Environment Classification (Snelder & Biggs, 2002).

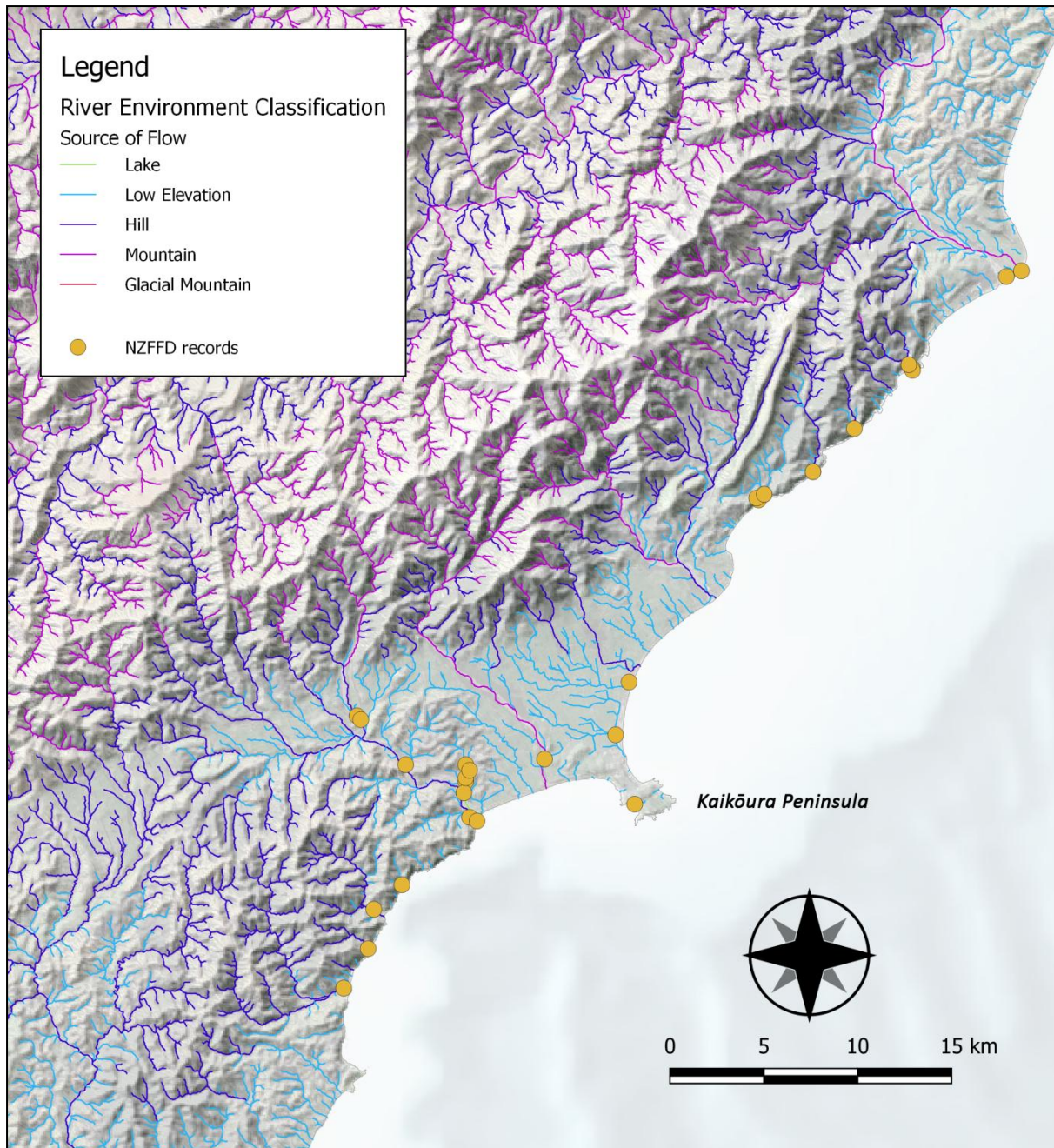


Fig. S2. Closer view of waterways on the Kaikōura coast of New Zealand classified by source of flow (Snelder & Biggs, 2002). Point locations are New Zealand Freshwater Fish Database (NZFFD) observation for *Galaxias maculatus*. There were no National Īnanga Spawning Database (NISD) records within the map extent prior to the present study.