

Supplementary Material

Taxonomic revision reveals potential impacts of Black Summer megafires on a cryptic species

Chris J. Jolly^{A,B,}, Harry A. Moore^{A,C}, Mitchell A. Cowan^A, Teigan Cremona^D, Judy A. Dunlop^{A,C,E}, Sarah M. Legge^{D,F,G}, Grant D. Linley^A, Vivianna Miritis^H, John C. Z. Woinarski^D, and Dale G. Nimmo^A*

^AInstitute of Land, Water and Society, School of Environmental Science, Charles Sturt University, Albury, NSW 2640, Australia.

^BAustralian Museum Research Institute, Australian Museum, Sydney, NSW 2010, Australia.

^CSchool of Biological Sciences, University of Western Australia, Crawley, WA 6907, Australia.

^DResearch Institute for the Environment and Livelihoods, Charles Darwin University, Darwin, NT 0810, Australia.

^EWestern Australian Feral Cat Working Group, 58 Sutton Street, Mandurah, WA 6210, Australia.

^FCentre for Conservation and Biodiversity Conservation Science, University of Queensland, St Lucia, Qld 4072, Australia.

^GFenner School of Society and the Environment, The Australian National University, Acton, ACT 2602, Australia.

^HSchool of Life and Environmental Sciences, The University of Sydney, Camperdown, NSW 2006, Australia.

*Correspondence to: Chris J. Jolly Institute of Land, Water and Society, School of Environmental Science, Charles Sturt University, Albury, NSW 2640, Australia Email: cjolly@csu.edu.au

Electronic Supplementary material (ESM)

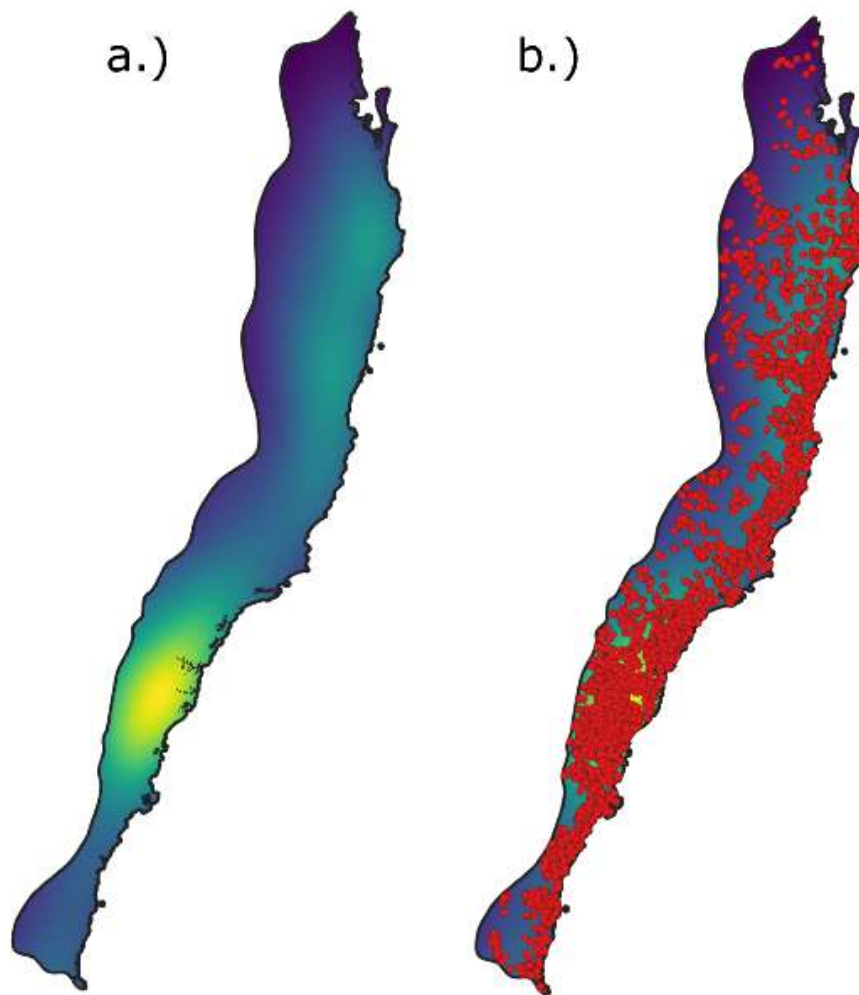


Figure S1. Sugar glider (*Petaurus breviceps*) presence records. a) A kernel density layer of arboreal mammal records, incorporated into MaxEnt models to indicate sampling bias within the redescribed range of *P. breviceps*. b) The sampling distribution of *P. breviceps* records, added to the kernel density layer depicted in panel a).