

Update on geophysical survey progress from the Geological Surveys of Western Australia, South Australia, Northern Territory, Queensland and Victoria (information current on 16 November 2015)

Further information on these surveys is available from Murray Richardson at GA via email at Murray.Richardson@ga.gov.au or telephone on (02) 6249 9229.

Table 1. Airborne magnetic and radiometric surveys

Survey name	Client	Project management	Contractor	Start flying	Line km	Spacing AGL Dir	Area (km ²)	End flying	Final data to GA	Locality diagram (Preview)	GADDs release
Coompana	GSSA	GA	GPX Surveys	7 Feb 2015	255 265	400 m 80 m E-W	85 910	8 Nov 2015	TBA	173: Dec 2014 p. 24	TBA
Delamere/ Spirit Hills	NTGS	GA	Thomson Aviation	20 Jul 2015	96 500 est.	400 m 80 m N-S	33 690	7 Nov 2015	TBA	176: Jun 2015 p. 22	TBA
Yalgoo	GSWA	GA	MAGSPEC Surveys	30 May 2015	110 516 est.	100/200 m 50 m E-W	11 200	27 Sep 2015	TBA	176: Jun 2015 p. 23	10 Dec 2015

TBA, to be advised.

Table 2. Gravity surveys

Survey name	Client	Project management	Contractor	Start survey	No. of stations	Station spacing (km)	Area (km ²)	End survey	Final data to GA	Locality diagram (Preview)	GADDs release
Gippsland	GSV	GA	Atlas	30 Jun 2014	1440	12 traverses at 500 m station spacing	8358	21 Jul 2015	Final data expected to be released via GADDs when permission to do so is received from GSV	170: Jun 2014 p. 25	To be released with the North Wiso data
Northern Wiso Basin	NTGS	GA	Atlas	18 Jun 2015	5020	4 km regular grid with areas of 2 km and 1 km infill	83 240	9 Aug 2015	Preliminary final data supplied to GA in Sep 2015	176: Jun 2015 p. 24	Released on 14 Oct 2015
SW Yilgarn WA	GSWA	GA	Atlas	12 Jun 2015	28 678	2 km along public roads and tracks	175 000	73.4% complete at 8 Nov 2015	TBA	176: Jun 2015 p. 24	TBA
Victoria Basin	NTGS	GA	Atlas	14 Aug 2015	6300	4 km regular grid	99 170	17 Sep 2015	Preliminary final data supplied to GA on 13 Nov 2015	177: Aug 2015 p. 17	10 Dec 2015
Stavelly	GSV	GA	TBA	Survey Quotation Request in preparation	Approx. 8000 in 9 separate areas	500 m regular grid in 8 areas and 500 m station interval along one traverse	TBA	TBA	TBA	177: Aug 2015 p. 18	TBA

TBA, to be advised.

Table 3. AEM surveys

Survey name	Client	Project management	Contractor	Start flying	Line km	Spacing AGL Dir	Area (km ²)	End flying	Final data to GA	Locality diagram (Preview)	GADDs release
Musgrave Region	GSSA	GA	TBA	TBA	16 000 est.	2 km; E-W lines	30 691	TBA	TBA	See Figure 1	The Quotation Request was released on 12 Oct 2015 and closed on 30 Oct 2015. The proposed survey covers parts of the Mann, Woodroffe, Alberga, Birksgate, Lindsay and Everard Standard 1:250k map sheets
West Kimberley and Ord-Bonaparte	WA Government: Departments of Water, Agriculture and Food	GA	SkyTEM Australia	26 Sep 2015	7837	Various +/- traverses	TBA	3 Nov 2015	TBA	177: Oct 2015 pp. 30-31	TBA
Isa Region	GSQ	GA	TBA	Winter 2016. Centered on Cloncurry	TBA	TBA	TBA	TBA	TBA	The Technical Specifications of the survey are being planned between GSQ and GA	The National Collaboration Framework Agreement was expected to be executed between GA and GSQ by Dec 2015

TBA, to be advised.

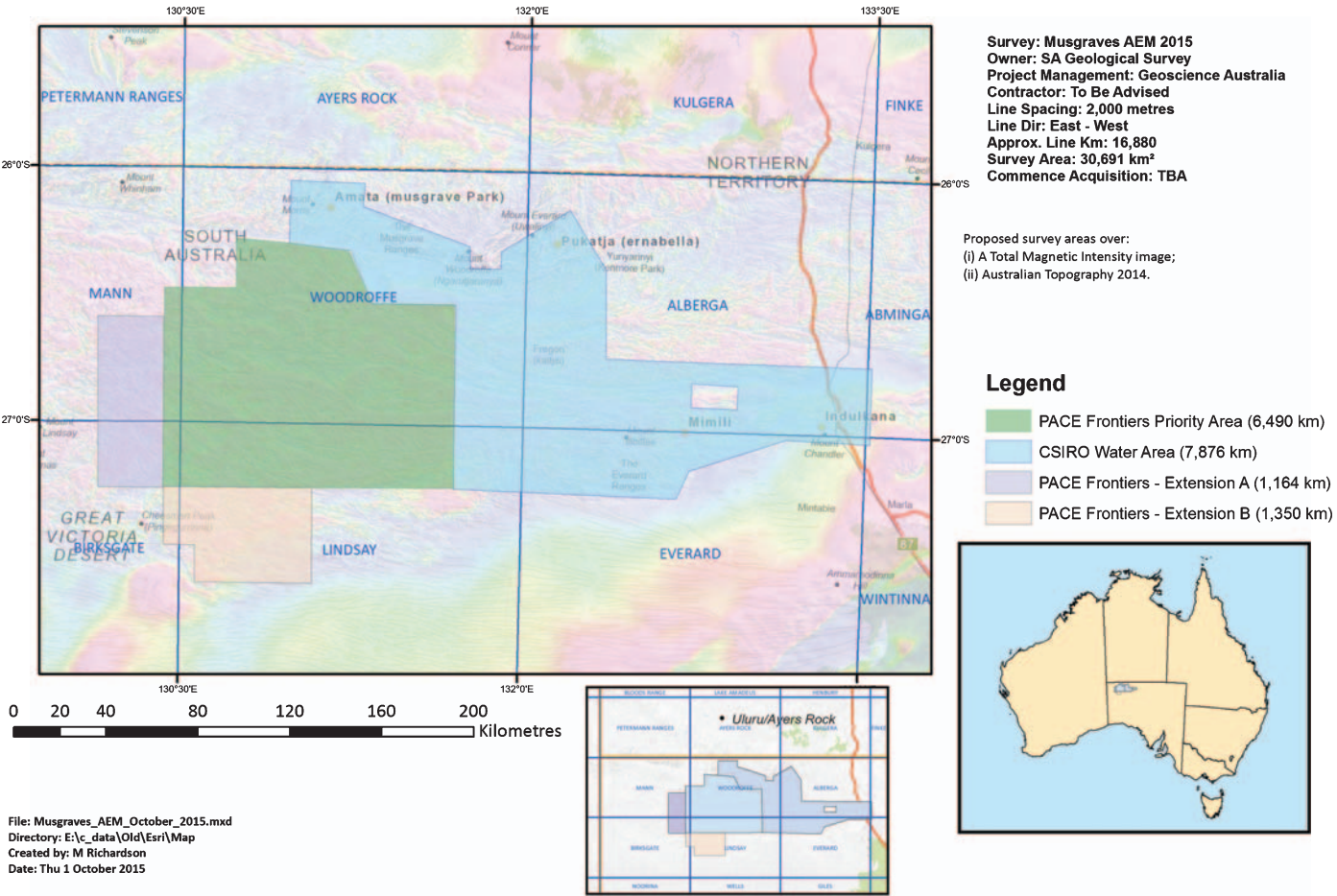


Figure 1. Proposed Musgrave Region AEM survey.

New public domain geophysical data from South Australia

Geophysical data held by the South Australian Government is routinely made available for free download via SARIG. In December 2015 – coinciding with the annual South Australian Exploration and Mining Conference (SAEMC) – another batch of data will be uploaded to SARIG.

As well as the latest state grid merges, 14 airborne surveys have been uploaded to the system and are available for download now. Table 1 lists the most recent surveys added to SARIG.

The surveys can be downloaded by navigating to SARIG (sarig.pir.sa.gov.au), selecting Geophysical Data from the

Databases menu, and drawing a box in your area of interest. Enter your search parameters (e.g. magnetics, radiometrics and so on) and click Perform Search. All available surveys in your area of interest will be listed. Simply choose the surveys you're after, enter your email address and click on Download Results. Once the data has been clipped to your area of interest, an email will be sent to you with a link to download the data.

Relevant reports for each survey will be included with the download package. Further information can be found in the Open file envelopes, listed in the table below. To find an envelope using SARIG,

select Publications and Reports from the Databases menu, and type in Env 11098 (or the envelope number you are searching for) and click Search. The document will be found next to the Mineral Exploration Reports option.

The next upload of data is scheduled for May 2016, to coincide with the South Australian Resources & Energy, Investment Conference (SAREIC).

Phillip Heath
Senior Geophysicist, Geological Survey
of South Australia
philip.heath@sa.gov.au

Table 1. Survey data added to SARIG in December 2015

Survey code	Survey name	Survey type	Flown by	Flown for	Line spacing	Line (km)	SA Government Open file envelope
2004SA003	Curnamona	AEM (Tempest)	Fugro Airborne Surveys Pty Ltd	Afmeco Pty Ltd	1000 m	4508.05	11098
2005SA002	Sandyoota	AEM (Tempest)	Fugro Airborne Surveys Pty Ltd	Afmeco Pty Ltd	1000 m	997	11098
2005SA012	Cuorunna	Mag/Rad	Fugro Airborne Surveys Pty Ltd	Cameco Australia Pty Ltd	200 m	12008	11125, 11178
2005SA015	Sandyoota	AEM (HoisTEM)	GPX Airborne Pty Ltd	Afmeco Pty Ltd and Areva Resources Australia Pty Ltd	500 m	72.7	11098
2006SA013	Gawler	AEM (Tempest)	Fugro Airborne Surveys Pty Ltd	Tasman Resources NL	1000 m	1442.91	11241
2006SA019	Elliston	Mag/Rad	Geotech Airborne Ltd	Afmeco Pty Ltd and Areva Resources Australia Pty Ltd	400 m	2250	11338
2006SA177	Ambrosia, Wynbring and Dingo Hill	Mag/Rad	UTS Geophysics Pty Ltd	Monax Mining Ltd	100 m	16949	11300, 11698, 11887
2006SA180	Mt Hope – Moorland	Mag/Rad	UTS Geophysics Pty Ltd	Monax Mining Ltd	100 m	10073	11200, 11568
2006SA219	Corunna South	AEM (Tempest)	Fugro Airborne Surveys Pty Ltd	Cameco Australia Pty Ltd	100 m	3584.9	11178
2007SA043	Algebuckina	AEM (RepTEM)	Geosolutions Pty Ltd	Red Metal Ltd	500 m and 1000 m	1642	10849, 11256, 11257, 11706
2008SA052	Blinman	Mag/Rad	Fugro Airborne Surveys Pty Ltd	Helix Resources Ltd	100 m	7540	11659
2008SA093	Coulta	AEM (RepTEM)	Geosolutions Pty Ltd	Internet Resources Ltd	400 m	1090.8	11231
2009SA045	Hillside	AEM (RepTEM)	Geosolutions Pty Ltd	Rex Minerals (SA) Pty Ltd	25 m	420.5	9937
2010SA026	Mount Martin	Mag/Rad	GPX Airborne Pty Ltd	Aldershot Resources	50 m	537	11344