

ASEG-PESA-AIG 2016

**25TH GEOPHYSICAL
CONFERENCE & EXHIBITION**

Interpreting the Past, Discovering the Future

SECTION 2 EXHIBITION

EXHIBITION



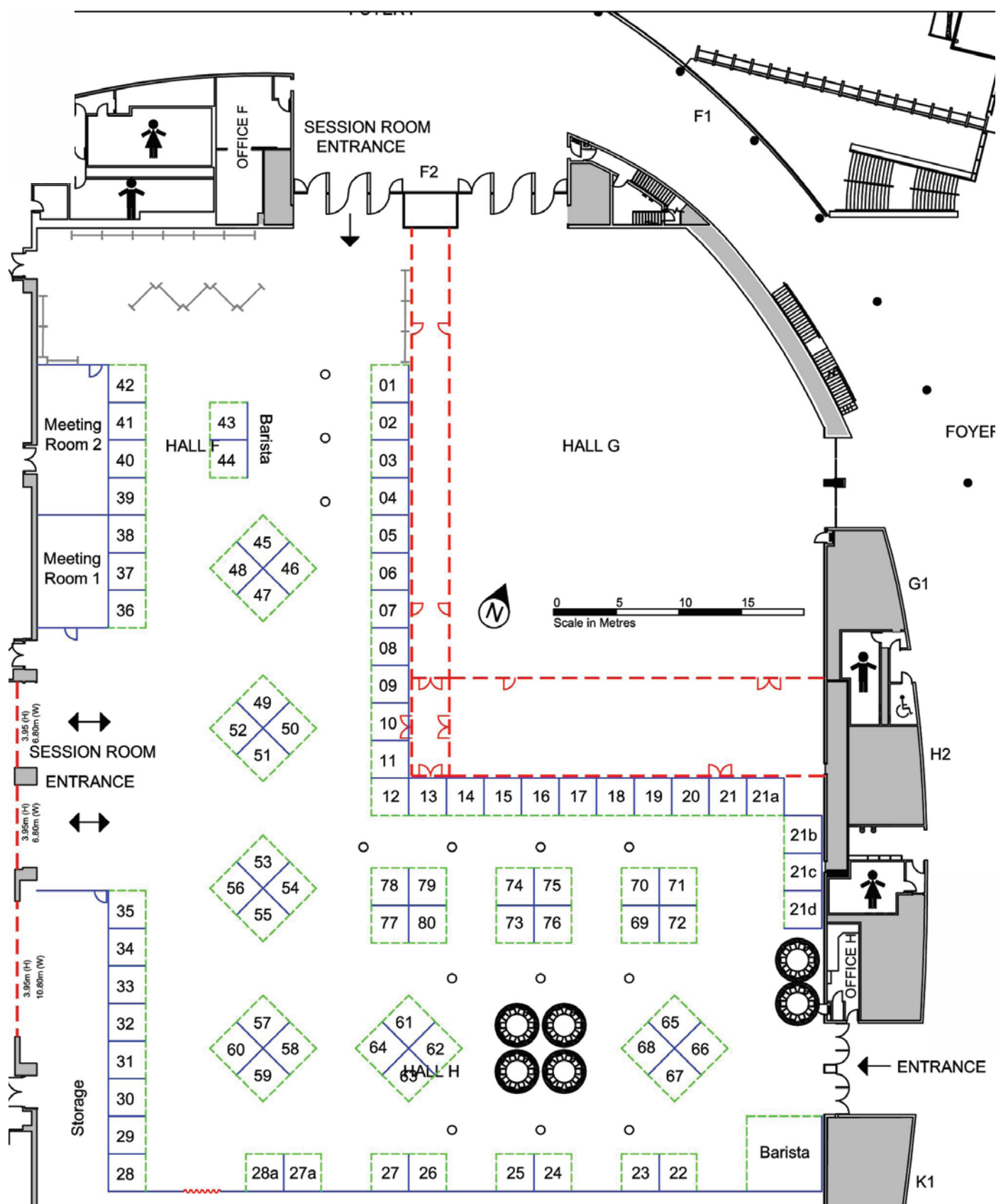
Australian Society of
Exploration Geophysicists

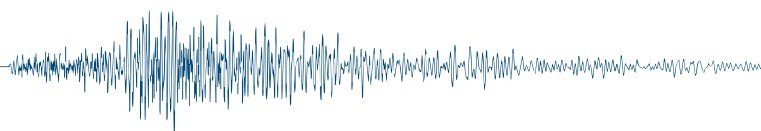


PESA
Petroleum Exploration
Society of Australia



**AUSTRALIAN
INSTITUTE OF
GEOSCIENTISTS**





Host Societies	
2	The Australian Society of Exploration Geophysicists (ASEG)
41	The Australian Institute of Geoscientists (AIG)
42	The Petroleum Exploration Society of Australia (PESA)
ASEG Sister Societies	
38	The Brazilian Geophysical Society (sbgrf)
37	European Association of Geoscientists & Engineers (EAGE)
31	Geological Society of Australia (GSA)
29	The Environmental and Engineering Geophysical Society (EEGS)
5	The International Airborne Geophysics Safety Association (IAGSA)
30	The South Australian Chamber of Mines and Energy (SACOME)
1	Society of Exploration Geophysicists
40	Society of Exploration Geophysics Japan
39	Society of Petroleum Geophysicists India
Exhibitor Snap Shot	
60	Aarhus Geophysics & Newexco
10	Aarhus Geosoftware
7	Abitibi Geophysics
20	Advanced Logic Technology
59	Alpha Geoscience Pty Limited
71	Archimedes Consulting
76	Archimedes Financial Planning P/L
44	AuScope
74	Austhai Geophysical Consultants
16	The Australian School of Petroleum - The University of Adelaide
65	Borehole Wireline
54 & 55	CGG
8	CoRMaGeo Instruments Pty Limited
52	CSIRO
11	Curtin University
33 & 34	Department of State Development - Mineral and Energy Resources, Government of South Australia
21	DMT GmbH & Co. KG
14	Earth Signal Processing Ltd
47	ElectroMagnetic Imaging Technology Pty Ltd
53 & 56	Gap Geophysics Australia and Gap Explosive Ordnance Detection
67	GBG
27a	GEM Systems and Modern Mag
63	Geological Survey of New South Wales

Exhibitor Snap Shot	
51	Geological Survey of Queensland
45 & 48	Geoscience Australia
19	Geosensor Wireline
61 & 62	Geosoft
68	Geovista
3	GPX Surveys
13	Groundwater Imaging
50	HiSeis
73	Instrumentation GDD Inc.
79	Intrepid Geophysics
6	IRIS Instruments
9	MAGSPEC Airborne Surveys
78	MALA GPR Australia
49	Mira Geoscience
27	MoHo & Resource Potentials
46	New Resolution Geophysics (NRG)
17	Northern Territory Geological Surveys
35	Petrosys
70	Phoenix Geophysics Ltd
23	Planetary Geophysics Pty Ltd & Geophysical Resources & Services Pty Ltd
22	Radiation Solutions Inc.
15	Sander Geophysics (SGL)
43	Santos
18	Scintrex Limited
12	Search Exploration Services, Montana GIS & Fender Geophysics
25	SkyTEM Australia P/L
4	SPECTREM AIR Proprietary Limited
64	Surtron Technologies Australia Pty Ltd
26	Tensor Research
57 & 58	Terrex Group
66	Thomson Aviation
32	UTS Geophysics
77 & 80	Velseis
75	Vista Clara
24	Wireline Services Group
72	Xcalibur Airborne Geophysics
69	Zonge Engineering
36	ZZ Resistivity Imaging Pty Ltd (ZZ)

Aarhus Geophysics

Aarhus Geophysics offers consulting in airborne geophysics, adopting state of the art approaches for quantitative results, e.g., modelling of AEM data affected by IP. We cover feasibility studies, QA/QC, processing, inversion of virtually any airborne system, data integration, and interpretation ranging from (hydro) geological models to mineral exploration targets

W: www.aarhusgeo.com

Aarhus GeoSoftware

Aarhus GeoSoftware is a leading provider of software for processing and inversion geophysical electromagnetic- and electrical data. We have developed a common platform for handling several types of data, where data handling is integrated from raw data to processing, inversion, QC of inversion results and visualisation of inversion models.

W: aarhusgeosoftware.dk

Abitibi Geophysics

Abitibi Geophysics provides the highest quality geophysical data acquisition, processing and interpretation services to help our clients find precious and base metals, diamonds, uranium and other mineral resources. We have built an international reputation over 32 years, with safe acquisition and delivery of top-quality products at competitive prices, on time.

W: <http://www.ageophysics.com/>

Advanced Logic Technology

W: www.alt.lu

Alpha Geoscience Pty. Limited

Alpha Geoscience supplies Geophysical Instruments from Mount Sopris, Geometrics, Radiation Solutions and other specialty manufacturers.

Rental of a wide variety of Geophysical Instruments.

Geophysical Contracting and Consulting Services to the exploration, mining, environmental, civil engineering and UXO industries.

Alpha is the worldwide distributors for the magROCK magnetic susceptibility meter and the FastSnap TEM system.

T: +61 2 9584 7500

E: info@alpha-geo.com

W: www.alpha-geo.com

Archimedes Consulting

Archimedes core service is the processing and interpretation of magnetic and gravity data using its unique techniques for the petroleum, and mineral exploration and development industries. Archimedes has expanded considerably into the international arena, working for clients such as Shell, BP, Petronas and BHP-Billiton.

W: www.archimedes-consulting.com.au

Archimedes Financial Planning P/L

We fast-track attainment of personal financial security, using a scientific *Econophysical* approach to assess rational valuations of assets.

We advise resource industry clients living worldwide — determining realistic goals; superannuation including Do-It-Yourself Super; direct shares; personal insurances; taxation planning; etc.

We hold AFSL 437294 (no ties to any product providers).

Contact details:

Organisation name: Archimedes Financial Planning P/L

Contact Person: Noll Moriarty

Address: 3-1315 Gympie Road, Aspley, Qld 4034

T: 1300 387 351

E: Info@ArchimedesFinancial.com.au

W: www.archimedesfinancial.com.au

AuScope

AuScope's aim is to build Earth science and geospatial infrastructure for Australian researchers to enable improved, sustainable discovery, development and management of minerals, energy and groundwater assets; improve our ability to spatially map Australia's location and internal deformation; and enhance our ability to contribute to natural hazard prediction and management.

W: www.auscope.org.au

Austhai Geophysical Consultants

Austhai Geophysical Consultants is focused on the Asia Pacific region with long term experience in Base Metal Exploration, Porphyry Gold and Copper exploration and in Geophysical Data Processing and Modeling for various clients. Austhai Geophysical Consultants Thailand office also provides Geophysical and Geotechnical services for the Groundwater and construction industries in Thailand, Philippines, Laos, Cambodia and Myanmar.

E: info@austhaigeophysics.com

W: www.austhaigeophysics.com

The Australian Institute of Geoscientists (AIG)

The Australian Institute of Geoscientists (AIG) is the leading professional institute representing geoscientists employed in all sectors of industry, education, research and government throughout Australia. AIG is a not for profit organisation which aims to advance the skills, status and public perception of more than 3000 members both within Australia and overseas. AIG members agree to comply with a strong and enforceable Code of Ethics as a condition of Institute admission. Members must also comply with several standards of best practice, including the JORC and VALMIN codes.

W: <https://www.aig.org.au/>

The Australian School of Petroleum, The University of Adelaide

The Australian School of Petroleum (ASP) is a world-class centre for petroleum education, training and research.

Exhibition

It is one of only a few institutions in the world offering fully integrated teaching and research programs in the disciplines of petroleum geoscience, engineering and management (reflecting the way industry works). Thus, unlike schools that are based on a single discipline serving many industry sectors, we are a multi-disciplinary school serving a single sector.

W: www.asp.adelaide.edu.au

The Australian Society of Exploration Geophysicists (ASEG)

The Australian Society of Exploration Geophysicists (ASEG) is a learned society of professional earth scientists specialising in the practical application of the principles of physics and mathematics to solve problems in a broad range of geological situations.

W: www.aseg.org.au

Beach Energy

Beach is a South Australian based oil and gas exploration and production company with its core operations in the Cooper and Eromanga Basins. Beach is Australia's largest onshore oil producer and has a substantial gas business. Beach also holds permits Otway and Bonaparte basins, and has permits in New Zealand.

W: www.beachenergy.com.au

Borehole Wireline

Borehole Wireline is a leading supplier of slim-hole wireline logging services throughout Australia. We have a proven track record of supplying a high quality data set in a safe and productive manner. Our services are supported by a thorough understanding of our client's requirements, our transparent approach to doing business and ISO accreditation.

Recognised as a leading supplier of image processing and interpretation services which includes 3rd party data.

T: 08 83513255

E: sales@borehole-wireline.com.au

W: www.borehole-wireline.com.au

The Brazilian Geophysical Society (sbgf)

The Brazilian Geophysical Society is a not-for-profit organisation and it is coming to its thirty eighth anniversary of foundation. Presently it aggregates more than 4000 members worldwide, spread through universities, research centers, government agencies and resource exploration and services companies.

E: sbgf@sbgf.org.br

W: www.sbgf.org.br

CGG

CGG is a fully integrated Geoscience company providing leading geological, geophysical and reservoir capabilities to its broad base of customers primarily from the global oil and gas industry. Its Equipment, Acquisition and Geology, Geophysics &

Reservoir (GGR) divisions bring value across all aspects of natural resource exploration and exploitation.

W: www.cgg.com

CoRMaGeo Instruments Pty. Limited

CoRMaGeo Instruments is a leading provider of sales, rentals, manufacturing and service for a wide range of geophysical instrumentation. CoRMaGeo Instruments is agent for many geophysical products including Bartington Instruments, Radiation Solutions, Iris Instruments, Robertson Geologging, AGI, Geonics, Geometrics, Sensors & Software and Terraplus.. CoRMaGeo also manufactures the Australian designed and produced RT-1 Magnetic Susceptibility Meter. We offer a strong customer focus with solutions backed by reliability and leading after-sales support.

E: sales@cormageo.com.au

W: www.cormageo.com.au

CSIRO

CSIRO's geophysics capability conducts research on magnetics, gravity, electromagnetics, nuclear magnetic resonance (NMR), petrophysics, and seismics. It includes the study of self-demagnetisation, magnetic remanence, basin modelling; EM and NMR interpretation in mineral exploration and groundwater assessment; Bayesian methods in model assimilation; geophysical modelling of CO₂ sequestration, and rock property studies.

Key contacts:

Dr Tim Munday
CSIRO Mineral Resources
T: +61 8 6436 8634
E: Tim.Munday@csiro.au

Dr Ben Clennell
CSIRO Energy
T: +61 8 6436 8599
E: Ben.Clennell@csiro.au

Curtin University

We are a major provider of geophysics graduates to the petroleum, minerals, groundwater and environmental industries in Australia and overseas. With an impressive suite of facilities and expertise, research funding from government and industry, we undertake high impact fundamental and applied research in geophysics.

E: info@geophy.curtin.edu.au
W: www.geophysics.curtin.edu.au

Department of State Development – Mineral and Energy Resources, Government of South Australia

As part of the South Australian Government, the Department of State Development (DSD) Mineral and Energy Resources Group facilitates mineral, petroleum and geothermal exploration and development within a sustainable framework by providing geoscientific information and data; industry regulation; legislative and policy development.

W: www.statedevelopment.sa.gov.au

DMT GmbH & Co.KG

Provider of seismic data acquisition and seismic monitoring systems. New product development: SUMMIT X One combines an extremely flexible field layout with greatest data quality in a wide range of applications in mining and infrastructure markets. – For further information please refer to www.summit-system.de.

A: Am Technologiepark 1, 45307 Essen, Germany
T: +49 201 172 1974
E: products@dm-group.com
W: www.dmt-group.com

Earth Signal Processing Ltd

Founded in 1993, Earth Signal is the largest dedicated On-Shore seismic data processing company in the world. We use our 100% proprietary software, SeisRight™, which is developed and maintained by our in-house R&D and programming staff to provide our customers with the most responsive, collaborative experience possible.

Patrick Tutty
Business Development Manager
Earth Signal Processing Ltd
1600, 715 – 5 Avenue SW, Calgary, Alberta, Canada T2P 2X6
E: Patrick@earthsignal.com
W: www.earthsignal.com
T: +1-403-264-8722
M: +1-403-829-3261

ElectroMagnetic Imaging Technology Pty Ltd

EMIT develops geophysical instrumentation and software, primarily for EM and IP surveys. Our customers appreciate the flexibility & reliability of our systems, their ease of use and timely support. The implementation of new features requested by users keep the systems modern and relevant. Our products include:

- SMARTem24 multi-purpose receiver system
- DigiAtlantis borehole EM/MMR system
- SMARTx4 Transmitter
- SMARTxM Transmitter Output Multiplexer
- SMART Fluxgate sensor for TEM/MMR
- Maxwell EM Software

W: www.electromag.com.au

The Environmental and Engineering Geophysical Society (EEGS)

The Environmental and Engineering Geophysical Society will celebrate the 30th anniversary of SAGEEP in Denver, Colorado, 19-23 March 2017. For this landmark year, EEGS will join forces with the National Ground Water Association (NGWA) to produce a concurrent conference, encompassing Hydrogeophysics and Deep Groundwater, focusing on the use of geophysics for groundwater studies.

For more information, please email: staff@eegs.org

W: <http://www.eegs.org/annual-meeting-sageep>

European Association of Geoscientists and Engineers (EAGE)

EAGE is a professional association for geoscientists and engineers. Founded in 1951, it is an organisation with a worldwide membership (around 18 000 members), providing a global network of commercial and academic professionals. The association is truly multi-disciplinary and international in form and pursuits.

W: www.eage.org

Fender Geophysics

Fender Geophysics are a leading provider of high quality geophysical services for mining, mineral exploration, geotechnical, environmental and agriculture projects.

As Fender Geophysics offers a broader range of techniques than most other providers our goal is to be the chosen service provider for all your geophysical surveys.

Techniques include: Induced Polarisation, Electromagnetics, Ground Magnetics and GPR.

Fender Geophysics
3a, 5 Waltham Street, Artarmon, NSW 2064
T: 02 9460 6580
E: info@fendergeophysics.com.au
W: www.fendergeophysics.com.au

Gap Geophysics Australia and Gap Explosive Ordnance Detection

Gap Geophysics Australia (Gap) is a progressive technology developer and service provider to the mineral exploration and environmental geophysics industries.

Gap Explosive Ordnance Detection uses proprietary instrumentation and techniques for the reliable detection and identification of near surface objects.

The Gap Geo Group of companies is owned and operated by a committed group of geophysicists and engineers who have been involved in the development and application of advanced survey instrumentation, techniques and software for over 25 years. The drive behind the company has been the desire to provide better quality, more reliable data, efficiently and cost effectively.

W: www.gapgeo.com

GBG

GBG is a specialist consultancy providing advanced subsurface and structural investigations using a variety of geophysical and non-destructive methods. Through a process of consultation, pre-project planning, and data acquisition and processing using industry standard practises GBG can tailor an investigation to provide enhanced subsurface or structural information for geotechnical, environmental or engineering projects. With offices in Sydney, Melbourne and Perth, as well as in the UK and USA we have Australia and the world covered.

W: www.gbmaps.com.au
W: www.gbgoz.com.au

Exhibition

GEM Systems and Modern Mag

Modern Mag provides high resolution ground magnetic surveys to exploration companies using potassium magnetometers. Modern Mag is the exclusive reseller of GEM systems equipment in Australia. GEM Systems manufactures advanced magnetometers and VLF systems for airborne geophysics, UAVs (Monarch gradiometer), geotechnical applications, ground magnetic surveys, UXO detection and research.

W: www.gemsystems.ca

W: www.modmag.com

Geological Society of Australia (GSA)

Members come from the minerals and petroleum industries, government departments, research and education institutions and consultancy groups. The Society's members represent all earth science professionals, including geologists, geophysicists, geochemists, palaeontologists, geotechnical and engineering geologists, environment geologists and associated professions. Membership caters for students, early careerists, established professionals and retired members. The GSA publishes two peer-reviewed journals, extensive special publications, magazines, Abstracts and newsletters as well as holding regular talks, workshops and conferences throughout Australia. We are the geoscience knowledge society.

W: www.gsa.org.au

Geological Survey of New South Wales

The Geological Survey of New South Wales is the state's premier geoscience agency, and is a branch of Resources & Energy Division, NSW Industry, Skills and Regional Development. It provides information to government, exploration and mining industries as well as the community about the state's geology, and mineral, coal and petroleum resources.

W: www.resourcesandenergy.nsw.gov.au

Geological Survey of Queensland

The Geological Survey of Queensland (GSQ) provides geoscience and resource information to improve the understanding of the geology and mineral and energy resource potential of Queensland. The GSQ undertakes regional geophysical programs and is the custodian of all geophysical data within the state. Data can freely be downloaded through the QDEX Data system.

W: www.business.qld.gov.au/industry/mining/geoscience-data-information/gsq

Geophysical Resources and Services Pty Ltd

GRS provide consulting and contracting services to the minerals and coal industries principally in Australia and South America through its offices in Brisbane and Santiago.

W: www.consultgrs.com.au

Geoscience Australia

Geoscience Australia is the national custodian of Australia's geoscientific and geospatial information. The agency carries out

applied geoscientific research and geospatial mapping programs and provides information to the Australian Government and industry to contribute to enhanced and sustainable economic, social and environmental benefits for all Australians.

W: www.ga.gov.au

Geosensor Wireline

The Geosensor group offers Borehole and Surface Geophysical Instrumentation for rental and sale. Borehole Logging Systems including Optical and Acoustic Televiwers and WellCAD software from ALT. CG5 Gravity meters from Scintrex. EM Conductivity systems from GF Instruments and Seismic systems from DMT. We have a significant rental pool of equipment and technical workshop facilities.

W: www.geosensorwireline.com

Geosoft

Geosoft software and services advance exploration of the earth's surface and subsurface. We provide solutions for exploration industries, government and the earth sciences, specialising in: earth mapping, earth modelling, GIS mapping, Geoscience information management and unexploded ordnance (UXO) detection.

W: www.geosoft.com

Geovista

Geovista manufacture and supply a comprehensive range of dependable borehole geophysics tools to cover most downhole data acquisition requirement for mineral exploration, exploitation, groundwater and site investigation. We supply loggers, winches, combinable logging sondes, imaging Televiwers, borehole cameras, VSP geophone sondes, Sonic P&S Sondes and Gyro borehole direction survey sondes.

W: www.geovista.co.uk

GPX Surveys

GPX Surveys is a global service provider specialising in the collection, processing and interpretation of airborne geophysical data. GPX Surveys offers fixed-wing and helicopter airborne Magnetics, Radiometrics, Electromagnetics and Gravity surveys.

W: www.gpxsurveys.com.au

Groundwater Imaging

Groundwater Imaging specialise in agricultural geophysics and multi-depth resistivity mapping. They are based in Dubbo and managed by Dr David Allen. They produce AgTEM Cart and HERBI. AgTEM Cart maps groundwater related features such as aquifers, regolith, subcrop and pollution plumes. HERBI maps groundwater interaction with waterways.

W: www.groundwaterimaging.com.au

HiSeis

HiSeis is a leading international geophysical exploration company providing sub-surface imagery solutions to the

hard-rock mining industry. The Company's innovative seismic technology and proprietary knowledge enables it to deliver results in complex geological environments assisting clients to accelerate discovery, add to mineral reserves and reduce mining costs. HiSeis are the hard-rock seismic experts.

W: www.hiseis.com.au

Instrumentation GDD Inc.

Since 1976, GDD manufactures, sells, rents and develops innovative, leading edge rugged ground IP & EM geophysical instruments. View latest innovations: new EM-IP Tx Controller, new 3DIP Receivers, new 10KW-4800V-20A IP Transmitter, improved NordicEM24 Receiver, new Post-Process IP-EM Software, etc. GDD sells worldwide and provides outstanding after sales service.

W: www.gddinstrumentation.com

The International Airborne Geophysics Safety Association (IAGSA)

The International Airborne Geophysics Safety Association (IAGSA) promotes the safe operation of helicopters and fixed-wing aircraft on airborne geophysical surveys. Member companies conduct low-level survey flights, and are committed to safe aircraft operations. Our association develops recommended practices, serves as a centre for exchange of safety information and as a repository for specialised statistics.

W: www.iagsa.ca

Intrepid Geophysics

Intrepid Geophysics (formerly Desmond Fitzgerald & Associates) has provided software and services for potential field geophysics applications since 1992.

Its winning combination of innovative software development and practical geophysics knowledge can cater to all your geophysics software, geological modelling, processing and training needs.

W: www.intrepid-geophysics.com

IRIS Instruments

IRIS Instruments is designing, manufacturing and marketing geophysical equipment for DC Resistivity Sounding and Imaging (SYSCAL), Induced Polarisation (VIP, ELREC, FullWaver), Magnetic Resonance (NUMIS) and Electromagnetic methods (PROMIS).

The field of applications concern Mineral Exploration, Groundwater surveys, Geotechnical Studies and Environmental investigations.

W: <http://www.iris-instruments.com/>

MAGSPEC Airborne Surveys

MAGSPEC Airborne Surveys specialises in magnetic, radiometric and gravity data acquisition and processing; from detailed, prospect scale exploration to regional mapping.

With extensive knowledge and experience in geophysical surveying worldwide, we strive to deliver the highest quality data and the best customer service.

Contact: Michael Lees
E: michael@magspec.com.au
W: www.magspec.com.au
T: +61 429 913 405

MALA GPR Australia

MALA GPR Australia is the distributor for ABEM and MALA in Oceania. We specialise in sales, rental, servicing and support of GPR, resistivity, TEM and seismic technologies.

With three full-time geophysicists in the office we are ready to make your next geophysical project a success.

W: www.malagpr.com.au

Mira Geoscience

Mira Geoscience provides software and consulting services for the creation of sound 3D geological models for better and faster business decisions. Our approach eliminates ambiguity and decreases uncertainty within 3D models, supported and cross-validated by multiple data sets. We believe that understanding the relationships between geology, geophysical responses and rock properties is the key to success.

W: www.MiraGeoscience.com

MoHo & Resource Potentials

Resource Potentials, in partnership with MoHo, provide sales and rentals of near surface geophysical instruments, surveying, data processing and integrated interpretation services. Their Tromino seismometer is a simple to use instrument that maps S-wave velocity and thickness of soil, sediment and regolith cover to a depth of 500 m and has engineering applications.

W: www.respot.com.au

Newexco

Newexco is an integrated team of geophysicists and geologists with an enviable track record of mine discovery. We have been involved in or directly responsible for the discoveries of Flying Fox and Spotted Quoll massive nickel sulphides and the Nova (nickel) and Monty (copper) massive sulphides. Newexco recently forged an alliance with Aarhus geophysics and now has a formidable capability in groundwater exploration and evaluation and also the capability to monitor tailings dam and waste facilities.

W: newexco.com.au

New Resolution Geophysics (NRG)

New Resolution Geophysics (NRG™) is an airborne geophysical company specialising in the collection of airborne magnetic, radiometric, gravity and electromagnetic data. NRG has been in operation since 2005 with a specific focus on the African, Middle East and Australasian markets. The company has

Exhibition

completed in excess of 4000000 line kilometres of survey in over 50 countries

W: www.airbornegeophysics.com

Northern Territory Geological Survey

The Northern Territory Geological Survey is dedicated to assisting explorers in unlocking the Territory's rich resource potential through world-class geoscience that's targeted towards a better understanding of the Territory's geological framework and prospectivity. Our client-focused team delivers and manages geoscientific datasets and actively promotes the exploration potential of the Territory.

W: www.minerals.nt.gov.au/ntgs

The Petroleum Exploration Society of Australia (PESA)

The Petroleum Exploration Society of Australia (PESA) is a national membership organisation representing the interests of all professionals and practitioners in the geoscientific and upstream petroleum industry. The purpose is to promote and maintain high professional and technical excellence in the upstream petroleum industry through Conferences, Technical papers, events and scholarships.

W: www.pesa.com.au

Petrosys

Petrosys is the industry leader in mapping, surface modeling, and data management software solutions delivering direct connectivity with the most popular exploration, production, and GIS data sources.

Petrosys helps bring together critical knowledge to produce high quality maps and surface models that assist in developing successful assets. It manages, edits, and analyses the underlying information including the specialised seismic, well and geosciences data used in the search for oil and gas.

W: www.petrosys.com.au

Phoenix Geophysics Ltd

Founded in 1975 in Toronto, Canada, Phoenix Geophysics is the world leader in onshore electromagnetic (EM) geophysical instrumentation and services. Phoenix has exported both natural-source (MT/AMT) and controlled-source (CSEM) equipment to over 80 countries including Australia. The Phoenix booth will provide information on MT, AMT, CSAMT, TDEM, FDEM, TDIP and FDIP equipment and software.

W: www.phoenix-geophysics.com

Planetary Geophysics Pty Ltd

ESTABLISHED in 2006, Planetary Geophysics provides high quality, specialised Exploration Geophysical services to Mineral and Energy projects across the globe.

W: <http://www.planetarygeophysics.com.au/>

Radiation Solutions Inc.

Radiation Solutions Inc. (RSI) specialises in nuclear instrumentation for the detection, measurement and analysis of low-level ionising radiation from both naturally occurring and man-made sources. The products are designed for precise measurement and suitable for rugged conditions of geophysical, environmental and industrial applications. RSI's suite of models include the RS-500 airborne systems, RS-700 carborne systems, several handheld gamma ray scintillometers and spectrometers including the newest portable model the RS-330.

W: www.radiationsolutions.ca

The South Australian Chamber of Mines and Energy (SACOME)

The South Australian Chamber of Mines and Energy (SACOME) is the peak industry body representing companies within South Australia's minerals, energy, extractive, and oil & gas sectors, including service providers to the industry. SACOME has grown hand-in-hand with the industry for more than three decades, supporting, promoting and connecting its members.

W: www.sacome.org.au

Sander Geophysics (SGL)

Sander Geophysics (SGL) provides worldwide airborne geophysical surveys for petroleum and mineral exploration, and geological and environmental mapping. Founded in 1956, SGL's services include high resolution airborne gravity, magnetic, electromagnetic, radiometric, and methane sensing surveys, using fixed-wing aircraft and helicopters.

W: www.sgl.com

Santos

An Australian energy pioneer since 1954, Santos is one of the leading independent oil and gas producers in the Asia-Pacific region, supplying the energy needs of homes, businesses and major industries across Australia and Asia.

W: www.santos.com

Scintrex Limited

Scintrex develops, manufactures and sells field survey instruments for Gravity (CG-5), Magnetics (ENVI Pro, ENVI Cs), Induced Polarization (IPR-12) and Resistivity (SARIS). We provide borehole gravity logging services. Our sister company, Micro-g LaCoste designs and builds the FG5-X Absolute Gravimeter, TAGS-6 Airborne Gravimeter, MGS-6 Marine Gravimeter and the gPhone-X Monitoring Gravity Meter.

W: www.scintrexltd.com

Search Exploration Services

Search Exploration Services was established in 1987 and under the guidance of Alex Copeland has developed high power

transmitters and fulltime multi-channel, [160] receivers. Today Search offers transmitters, receivers, part crews and full crews for Induced Polarisation surveys in both Australia and overseas.

E: search@searchex.com.au
W: www.searchex.com.au

SkyTEM Australia P/L

SkyTEM airborne electromagnetic systems do what no other single airborne geophysical system can do – it's patented MultiMoment maps the near surface in high resolution whilst simultaneously acquiring accurate measurements to depths of 600 m or more. SkyTEM is globally accepted as the leading technology for high resolution airborne EM mapping programmes.

W: www.skytem.com

Society of Exploration Geophysicists

Founded in 1930, the Society of Exploration Geophysicists is a not-for-profit organisation committed to connecting and inspiring the people and science of geophysics. With 30 000+ members in 138 countries, SEG provides educational resources to the geosciences community through publications, books, events, forums, professional development courses, and more.

W: www.seg.org

Society of Exploration Geophysics Japan

GJ consists of its members who have experiences in geophysical exploration and related fields, and members who support the activities of the Society. The President represents the Society.

The General Meeting of Members is the legislative body of the Society. SEGJ holds an Annual General Meeting every year, and the President summons a Special General Meeting, when necessary. The Representatives consists of 80–120 persons, who are elected by all Active Members. The Officers of the Society are 10–20 Directors and one or two Auditors, who are elected by votes of the Representatives on the General Meeting. The President and two Vice-Presidents are elected by mutual votes of the Directors. The Directors form the Board of Directors, and the Board executes the duties of the Society. The Auditors inspect the administrative and financial matters of the Society.

W: www.segj.org/index_e.html

The Society of Petroleum Geophysicists India

W: www.spgindia.org

SPECTREM AIR Proprietary Limited

SPECTREM AIR operates the most advanced fixed-wing airborne geophysical system, collecting high resolution Electromagnetic (EM), Magnetic, Radiometric and Gravity concurrently. With the highest power and advanced processing, the SPECTREPLUS system has the ability to simultaneously map shallow (1–100 m) and deep (100–1000 m) features with a high level of resolution. Our team of specialists provide integrated 3D solutions for geological mapping, minerals

exploration targeting including oil and gas, geo-hydrological, geo-engineering applications.

W: www.spectrem.co.za
E: info@spectrem.co.za

Surtron Technologies Australia Pty Ltd

Surtron offers industry leading slim-hole wireline geophysical logging, downhole surveying, data interpretation, client training and ancillary services. Our tooling, sensors and componentry are sourced from leading technology companies worldwide and integrated with our in-house capabilities to deliver high quality data for use across the fields of geotechnical engineering, hydrogeology, environmental management and metrology.

W: www.surtron.com.au

Tensor Research

Tensor Research develops and supports ModelVision, a complete magnetic and gravity interpretation system, and specialises in potential field research covering forward and inverse modelling, processing, filtering, analysis and visualisation of magnetic and gravity data. They work with the latest generation of instruments including full tensor gravity and magnetic systems, cross-wing gradient, flux-gate and total magnetic field instruments. They also sell and specialise in Discover PA and QuickMag software, owned by Pitney Bowes Software.

W: www.tensor-research.com.au

Terrex Group

The Terrex Group is a leading technology-focused seismic solutions provider. Terrex provides cutting-edge seismic acquisition services, surveying and geophysical processing services to the global oil and gas, and resources industries. After 30 Years of seismic operations, Terrex is Australia's most experienced surface and subsurface earth imaging solutions provider with an unparalleled track record of successfully delivering high quality seismic programs. Terrex has extensive seismic acquisition experience, having operated seismic crews in all major Australian onshore sedimentary basins as well as New Zealand, PNG and Iran.

W: www.terrexseismic.com

Thomson Aviation

Thomson Aviation based in Griffith, Australia is a global service provider specialising in the acquisition and processing of high resolution airborne geophysical data.

Thomson Aviation provides fixed-wing and helicopter magnetics & radiometrics, gravity and electromagnetic surveys around the world.

Regional Australian offices in Western Australia and Tasmania, as well as in South Africa, Mongolia and Indonesia assist Thomson Aviation to now routinely fly geophysical surveys around the world.

W: www.thomsonaviation.com.au

Exhibition

UTS Geophysics – part of Geotech Airborne Surveys

UTS Geophysics has been the leading provider of airborne magnetic, radiometric and gravity surveys for over 20 years. As part of the Geotech Airborne group, we can fulfil all your electromagnetic survey requirements, utilising both VTEM and ZTEM.

We have the aircraft and systems to ensure every project is completed safely and to the highest standard. We are your Exploration advantage.

W: www.uts.com.au

Velseis

Velseis has built a reputation as a leading Australian seismic contractor with over 30 years experience throughout the Asia-Pacific region, Africa and Europe, servicing the Petroleum, CSG, Coal and Mineral Industries. Velseis has an unrivalled reputation in the acquisition and processing of high resolution seismic data using Vibroseis, explosive, and Mini-SOSIE sources.

Velseis offers a fully integrated professional service incorporating design, shot hole drilling, acquisition, processing and the interpretation of 2D, 3D and multi-component seismic surveys. Additionally, PT Velseis Indonesia provides comprehensive geophysical logging services in South East Asia.

W: www.velseis.com

T: 61 7 33765544

F: 61 7 33766939

Vista Clara

Vista Clara develops the world's most advanced NMR instrumentation for precise groundwater, mining, environmental, and geotechnical applications. Our cutting-edge well logging, surface-based, and laboratory NMR instruments are available through rental, services, or purchase, and are backed by international expert support.

W: www.vista-clara.com

Wireline Services Group

Our mission is to maximise your resources through high quality, safe, cost effective wireline geophysics, structural imaging, and directional survey.

WSG provides the best data acquisition, processing, interpretation, and customised solutions.

Our impeccable record speaks for itself, with over 9 million meters of borehole logged and 7 years LTI free.

W: www.wirelineservices.com.au

E: sales@wirelineservices.com.au

Xcalibur Airborne Geophysics

Xcalibur Airborne Geophysics is a South African company that specialises in ultra-high resolution fixed-wing gradient magnetic and radiometric surveys using our signature, low-flying, modified Air Tractor aircraft, and time-domain electromagnetic (TEM) surveys in Africa and the Middle East. Additional services include airborne gravity, data enhancement and interpretation by experienced geophysicists.

W: www.xagsa.com

Zonge Engineering

- Zonge is a geophysical specialist in the provision of broadband electrical and electromagnetic methods
- Zonge provides the widest range of surveys in any location and can tailor the survey to get your best outcome
- Zonge survey professionals have the expertise and the experience needed to deliver efficient safe surveys without compromising on data quality

Survey methods

High Powered IP/resistivity, High Powered EM, NanoTEM, Controlled and Natural source Magneto-Telluric techniques (CSAMT, AMT, MT), Down hole including EM, IP, NMR and MMR.

W: www.zonge.com.au

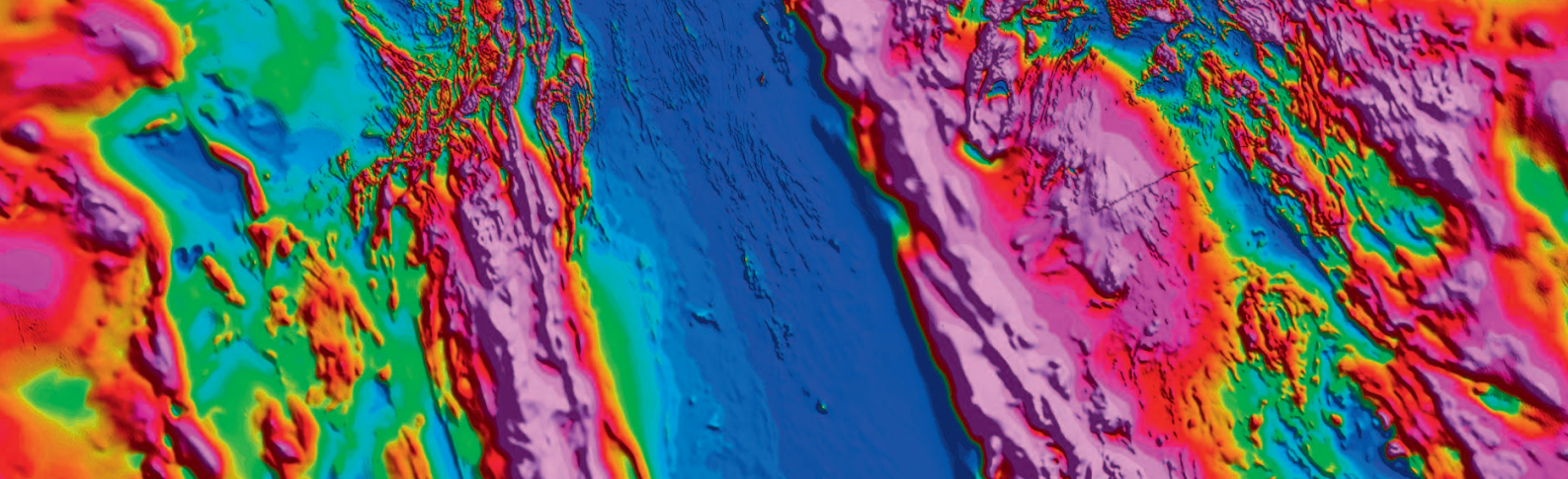
T: 618 83710020

ZZ Resistivity Imaging Pty. Ltd. (ZZ)

ZZ Resistivity Imaging Pty. Ltd. (ZZ) was founded in 2006 by two near-surface geophysicists from the University of Adelaide and is a South Australian-based geophysical instrument manufacturer. We specialise in the development of 61-channel resistivity and IP meters and 2.5D inversion software.

Our geophysicists are highly regarded in the academic sphere. We hold an extensive understanding of how resistivity/IP methods work, and our organisational culture promotes professionalism and goodwill. We intend to become the problem-solver for our customers. While taking care of your order, we also manage your practical problems faced in near-surface exploration.

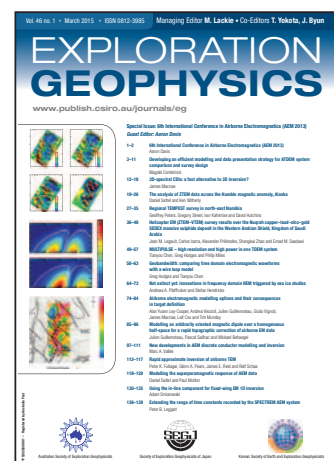
W: www.zzgeo.com



Exploration Geophysics

The Journal of the Australian Society of Exploration Geophysicists

Publishing excellent research, technical papers, case histories, advances in data interpretation and theoretical developments in applied geophysics.



Preview

The Magazine of the Australian Society of Exploration Geophysicists

News and reviews on the exploration industry, advances in geophysical techniques and communication among ASEG members.



Stay informed

Keep up to date with industry news by subscribing to our email alerts or registering for RSS feeds.

www.publish.csiro.au/earlyalert



www.publish.csiro.au/journals

