

Supplementary material

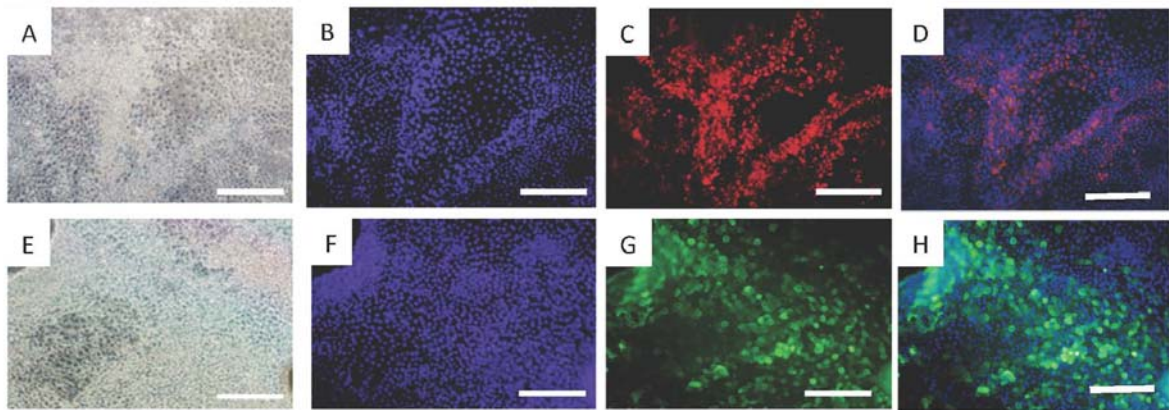


Fig. S1. Cytoplasmic localization of SSEA1 and SSEA4 antibodies in putative bESCs. (A) Bright field, (B) Hoechst 33342, (C) SSEA1 antibody, (D) Merge, and for SSEA4, (E) Bright field, (F) Hoechst 33342, (G) SSEA4 antibody, (H) Merge. Scale bars = 100 μ m.