

Supplementary Material

The effects of sildenafil citrate on feto–placental development and haemodynamics in a rabbit model of intrauterine growth restriction

Jorge López-Tello^A, María Arias-Álvarez^A, María-Ángeles Jiménez-Martínez^B, Alicia Barbero-Fernández^B, Rosa María García-García^C, María Rodríguez^D, Pedro L. Lorenzo^C, Laura Torres-Rovira^A, Susana Astiz^E, Antonio González-Bulnes^{E,F} and Pilar G. Rebollar^{D,G}

^ADepartment of Animal Production, Veterinary Faculty, Complutense University of Madrid, Ciudad Universitaria, s/n, 28040, Madrid, Spain.

^BDepartment of Animal Medicine and Surgery, Veterinary Faculty, Complutense University of Madrid, Ciudad Universitaria, s/n, 28040, Madrid, Spain.

^CDepartment of Physiology (Animal Physiology), Veterinary Faculty, Complutense University of Madrid, Ciudad Universitaria, s/n, 28040, Madrid, Spain.

^DDepartment of Animal Production, Polytechnic University of Madrid, Ciudad Universitaria, s/n, 28040, Madrid, Spain.

^EComparative Physiology Lab, SGIT-INIA, Avda, Puerta de Hierro, s/n, 28040, Madrid, Spain.

^FDepartment of Veterinary Medicine, University of Sassari, Via Vienna 2, 07100, Sassari, Italy.

^GCorresponding author. Email: pilar.grebollar@upm.es

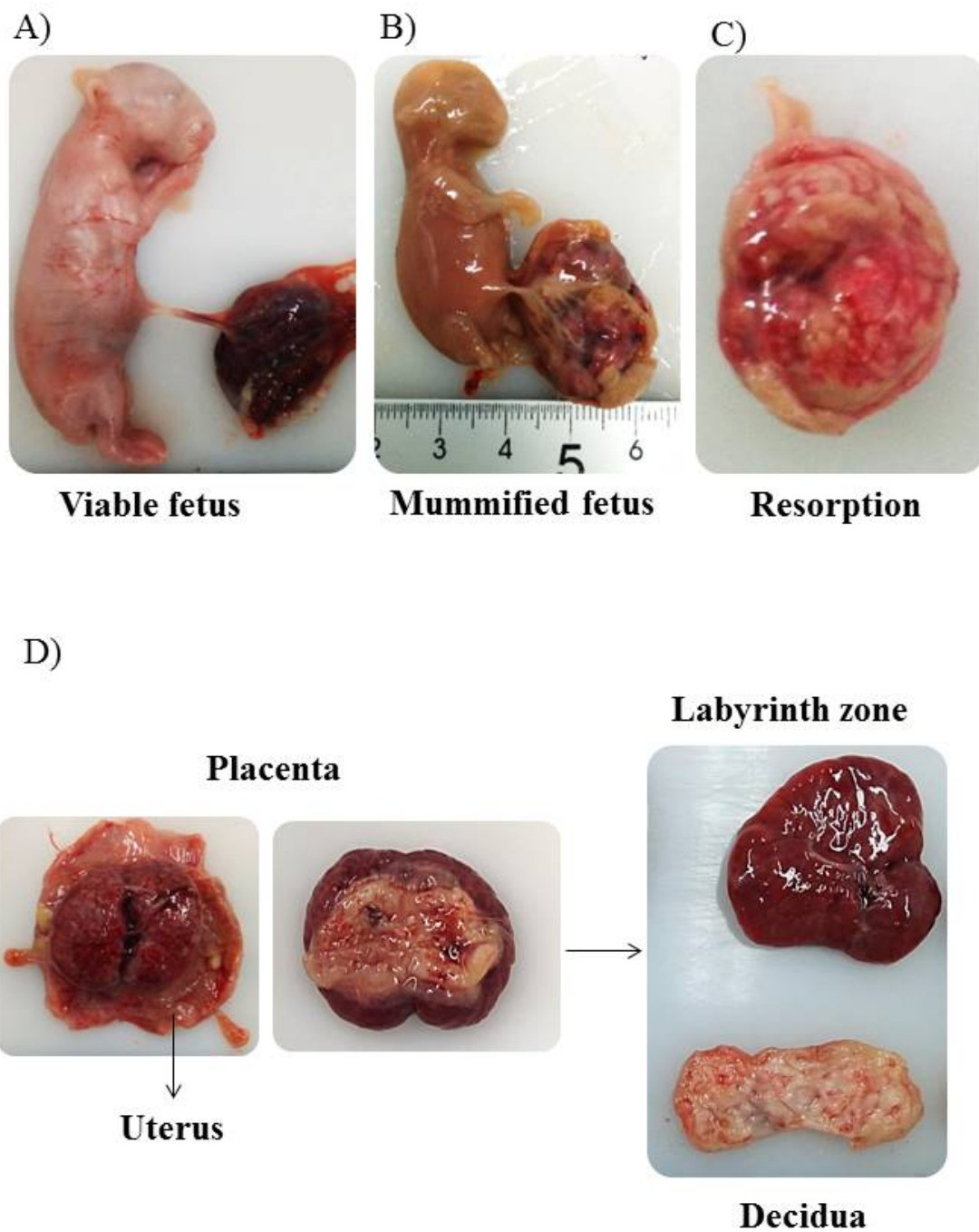


Fig. S1. Macroscopic image of rabbit conceptus at Day 28 of pregnancy. (A) Viable fetus; (B) mummified fetus; (C) resorption; and (D) rabbit placenta with their corresponding separating zones, labyrinth and decidua.

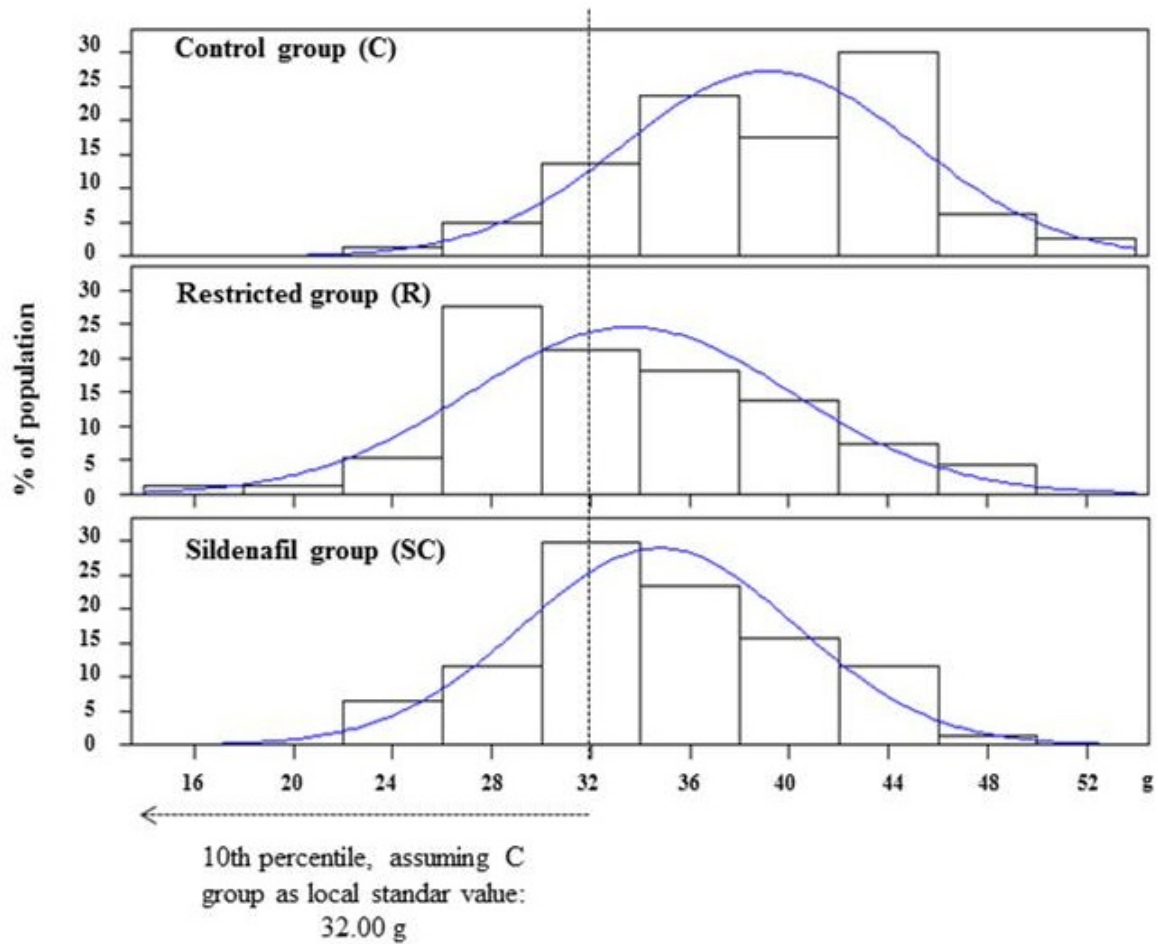


Fig. S2. Distribution curve of viable fetuses at Day 28 of pregnancy from dams fed *ad libitum* (C = 7), restricted (R = 8) or restricted and treated with sildenafil citrate (SC = 7). Vertical dashed line denotes the 10th percentile of control weights (32 g). Number of fetuses per treatment: C group, $n = 81$; R group, $n = 94$; SC group, $n = 77$.

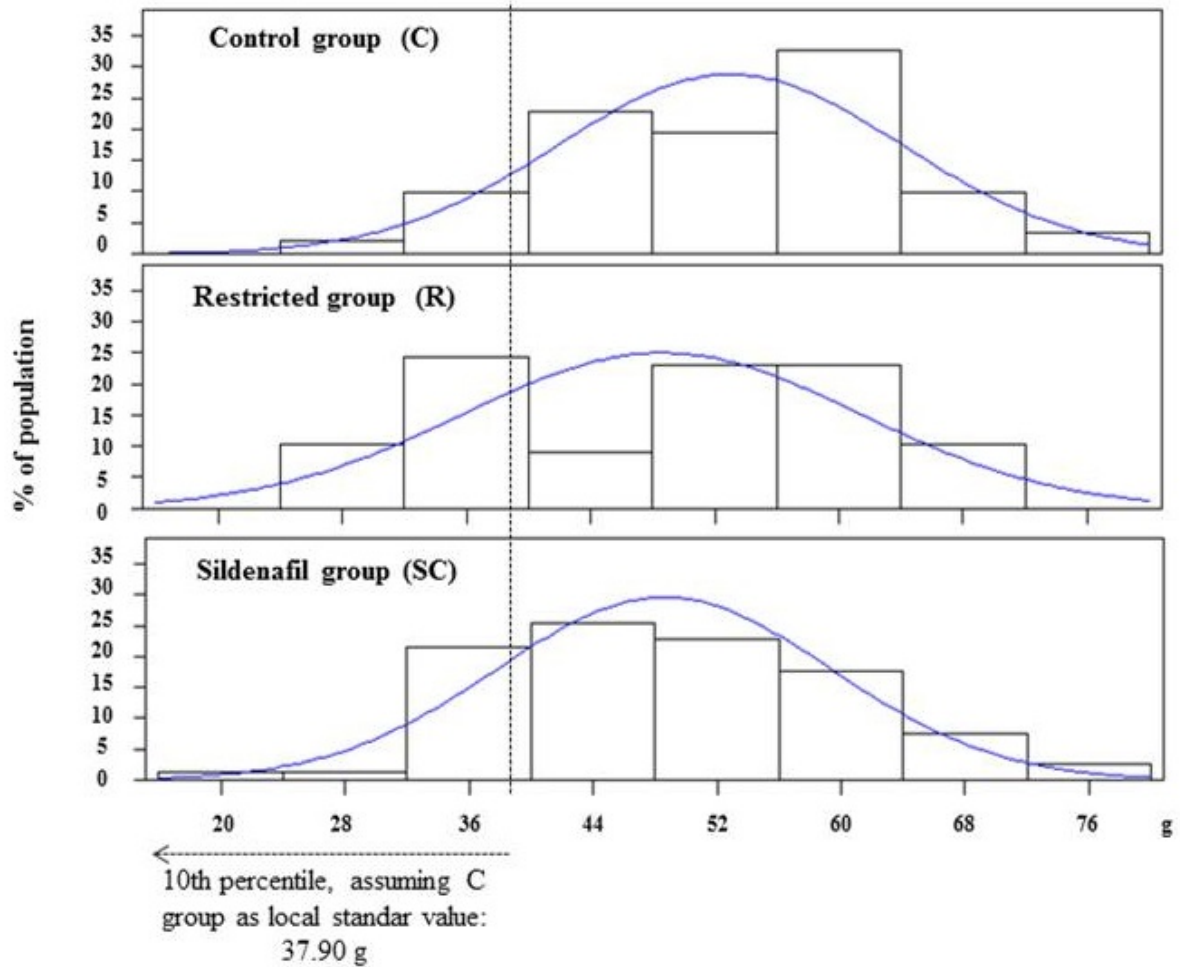


Fig. S3. Distribution curve of newborns at birth from dams fed *ad libitum* (C = 8), restricted (R = 7) or restricted and treated with sildenafil citrate (SC = 8). Vertical dashed line denotes the 10th percentile of *ad libitum* control weights (37.90 g). Number of newborns per treatment: C group, $n = 85$; R group, $n = 75$; SC group, $n = 76$.