

Supplementary Material

Membrane lipid profile of *in vitro*-produced embryos is affected by vitrification but not by long-term dietary supplementation of polyunsaturated fatty acids for oocyte donor beef heifers

Beatriz C. S. Leão^{A,B}, Nathália A. S. Rocha-Frigoni^{A,B}, Ériklis Nogueira^C, Elaine C. Cabral^D, Christina R. Ferreira^D, Marcos N. Eberlin^D, Mônica F. Accorsi^A, Tiago V. Neves^A and Gisele Z. Mingoti^{A,B,E}

^ALaboratory of Physiology of Reproduction, School of Veterinary Medicine, UNESP – Universidade Estadual Paulista, Rua Clóvis Pestana 793, 16050-680, Araçatuba, SP, Brazil.

^BPost-Graduation Program in Veterinary Medicine, School of Agrarian and Veterinarian Sciences, Department of Animal Reproduction, UNESP – Universidade Estadual Paulista, Via de Acesso Prof. Paulo Donato Castellane s/n, 14884-900 Jaboticabal, SP, Brazil.

^CEmbrapa Pantanal, Rua 21 de Setembro 1880, 79320-900, Corumbá, MS, Brazil.

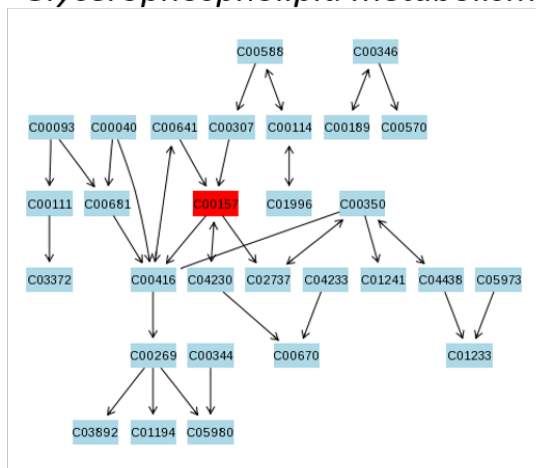
^DThomson Mass Spectrometry Laboratory, Institute of Chemistry, University of Campinas, Cidade Universitária Zeferino Vaz s/n, CP 6154, bloco A6, sala 111, 13083-970, Distrito de Barão Geraldo, Campinas, SP, Brazil.

^ECorresponding author. Email: gmingoti@fmva.unesp.br

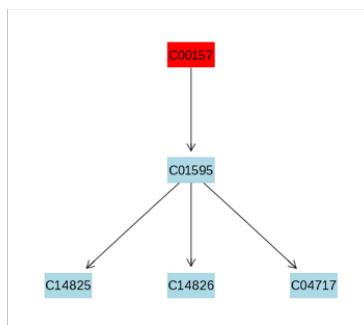
Table S1. List of HMDB and/or KEGG matches found when all lipids listed at Table 2 were submitted to pathway analysis (MetaboAnalyst 3.0)

Query	Match	HMDB	PubChem	KEGG
	PC(32:1)PC(16:0/16:1(9Z))	HMDB07969	6443788	C00157
	PC(32:0)PC(14:0/18:0)	HMDB07871	131150	C00157
	PC(32:1)PC(16:0/16:1(9Z))	HMDB07969	6443788	C00157
	PC(34:4)PC(14:0/20:4(5Z,8Z,11Z,14Z))	HMDB07883	24778634	C00157
	PC(34:1)PC(16:0/18:1(9Z))	HMDB07972	5497103	C00157
	PC(36:4)PC(18:2(9Z,12Z)/18:2(9Z,12Z))	HMDB08138	5288075	C00157
	PC(34:1)PC(16:0/18:1(9Z))	HMDB07972	5497103	C00157
	PC(36:3)PC(o-18:1(9Z)/18:2(9Z,12Z))	HMDB13429	6443159	
	PC(34:0)PC(o-16:0/18:0)	HMDB13405	11803170	
	PC(36:6)PC(14:0/22:6(4Z,7Z,10Z,13Z,16Z,19Z))	HMDB07892	24778639	C00157
	PC(36:5)PC(16:0/20:5(5Z,8Z,11Z,14Z,17Z))	HMDB07984	24778723	C00157
	PC(40:5)PC(18:0/22:5(4Z,7Z,10Z,13Z,16Z))	HMDB08055	24778871	C00157
	PC(38:2)PC(18:0/20:2(11Z,14Z))	HMDB08045	24778847	C00157
	PC(40:6)PC(18:0/22:6(4Z,7Z,10Z,13Z,16Z,19Z))	HMDB08057	24778876	C00157
	PC(42:9)PC(20:3(8Z,11Z,14Z)/22:6(4Z,7Z,10Z,13Z,16Z,19Z))	HMDB08419	52923269	C00157
	PC(42:7)PC(20:1(11Z)/22:6(4Z,7Z,10Z,13Z,16Z,19Z))	HMDB08321	52923147	C00157

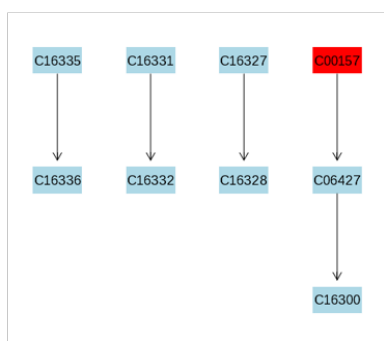
Glycerophospholipid metabolism



Linoleic acid metabolism



Alpha-linolenic acid metabolism



Arachidonic acid metabolism

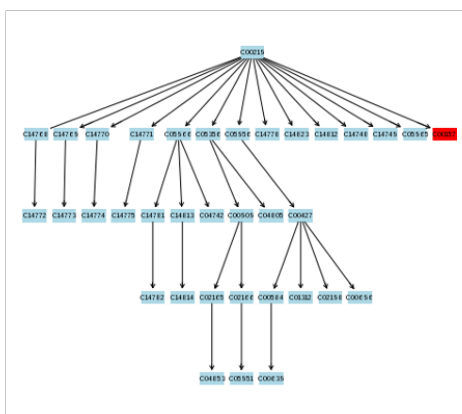


Fig. S1. Graphical view of the pathways related to phosphatidylcholine (PC) in the *Bos taurus* pathway library. The PC is labeled in the red (C00157 KEGG ID).