

## Supplementary Material

### Role of insulin-like growth factor 1 on cross-bred *Bos indicus* cattle germinal vesicle oocytes exposed to heat shock

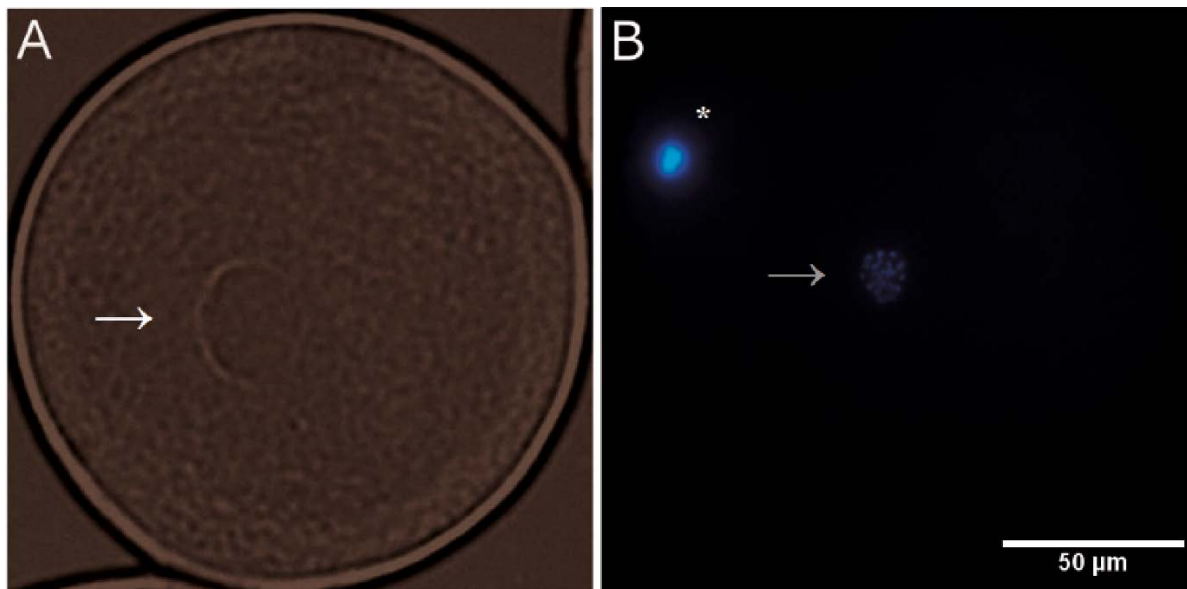
Rafaela S. Lima<sup>A</sup>, Pedro H. B. Risolia<sup>A</sup>, Jéssica Ispada<sup>B</sup>, Mayra E. O. A. Assumpção<sup>C</sup>, José A. Visintin<sup>C</sup>, Cássia Orlandi<sup>B</sup> and Fabíola F. Paula-Lopes<sup>A,B,D</sup>

<sup>A</sup>Department of Pharmacology, Institute of Biosciences, São Paulo State University (UNESP), Botucatu, SP, Rubião Júnior, S/N, 18618-970, Brazil.

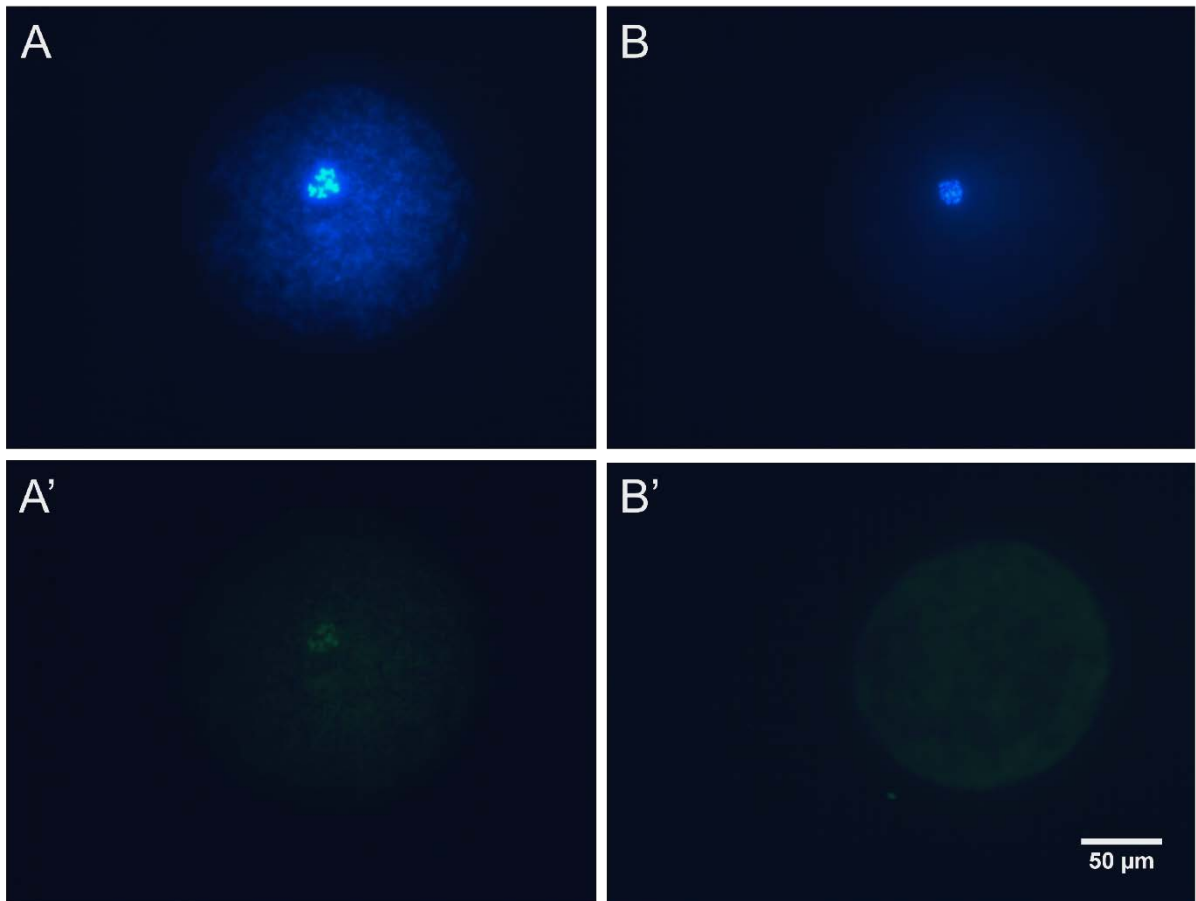
<sup>B</sup>Department of Biological Sciences, Federal University of São Paulo, 275 Prof. Artur Riedel St., Diadema, SP, 09972-270, Brazil.

<sup>C</sup>Department of Animal Reproduction, University of São Paulo, 87 Prof. Dr. Orlando Marques de Paiva Av., São Paulo, SP, 05508-010, Brazil.

<sup>D</sup>Corresponding author. Email: paula.lopes29@unifesp.br



**Fig. S1.** Representative digital images showing bovine germinal vesicle (GV) oocyte stained with lacmoid (A: bright light view) and metaphase II oocyte stained with Hoechst 33342 (B: UV view). Arrows indicate meiotic spindle and asterisk indicates polar body.



**Fig. S2.** Representative digital images illustrating bovine oocytes subjected to TUNEL analysis 24 h after initiation of heat shock. Hoechst-stained (A, B), TUNEL-positive (A') and TUNEL-negative (B') oocytes at metaphase I (MI) stage. Note that DNA was visualized with blue fluorescence after staining with Hoechst 33342 (A, B) while TUNEL-positive chromatin was labeled in green (A').