

Supplementary Material

Tissue cell stress response to obesity and its interaction with late gestation diet

Vivek Saroha^A, Neele S. Dellschaft^A, Duane H. Keisler^D, David S. Gardner^C, Helen Budge^A, Sylvain P. Sebert^{A,E,F} and Michael E. Symonds^{A,B,G}

^AEarly Life Research Unit, Academic Division of Child Health, Obstetrics and Gynaecology, School of Medicine, Queen's Medical Centre, University of Nottingham, Nottingham NG7 2UH, UK.

^BNottingham Digestive Disease Centre and Biomedical Research Unit, School of Medicine, Queen's Medical Centre, University of Nottingham, Nottingham NG7 2UH, UK.

^CSchool of Veterinary Medicine and Science, Sutton Bonington Campus, University of Nottingham, Nottingham LE12 5RD, UK.

^DDepartment of Animal Science, University of Missouri, Columbia, MO 65211, USA.

^ECentre for Life-Course Health Research, and Biocentre Oulu, University of Oulu, Aapistie 5B, 90014 Oulu, Finland.

^FDepartment of Genomics of Complex Diseases, Imperial College London, London, UK.

^GCorresponding author. Email: michael.symonds@nottingham.ac.uk

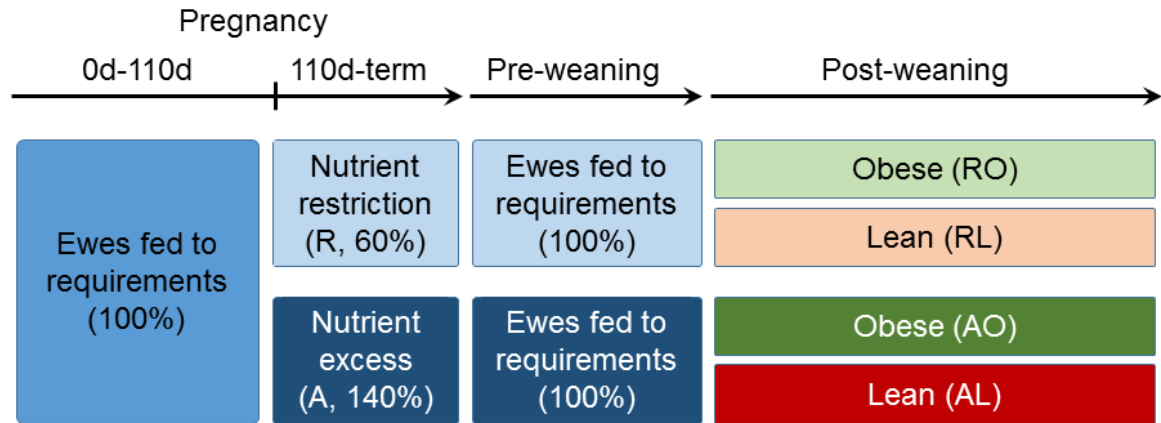


Fig. S1. Overview of the groups included in this study.

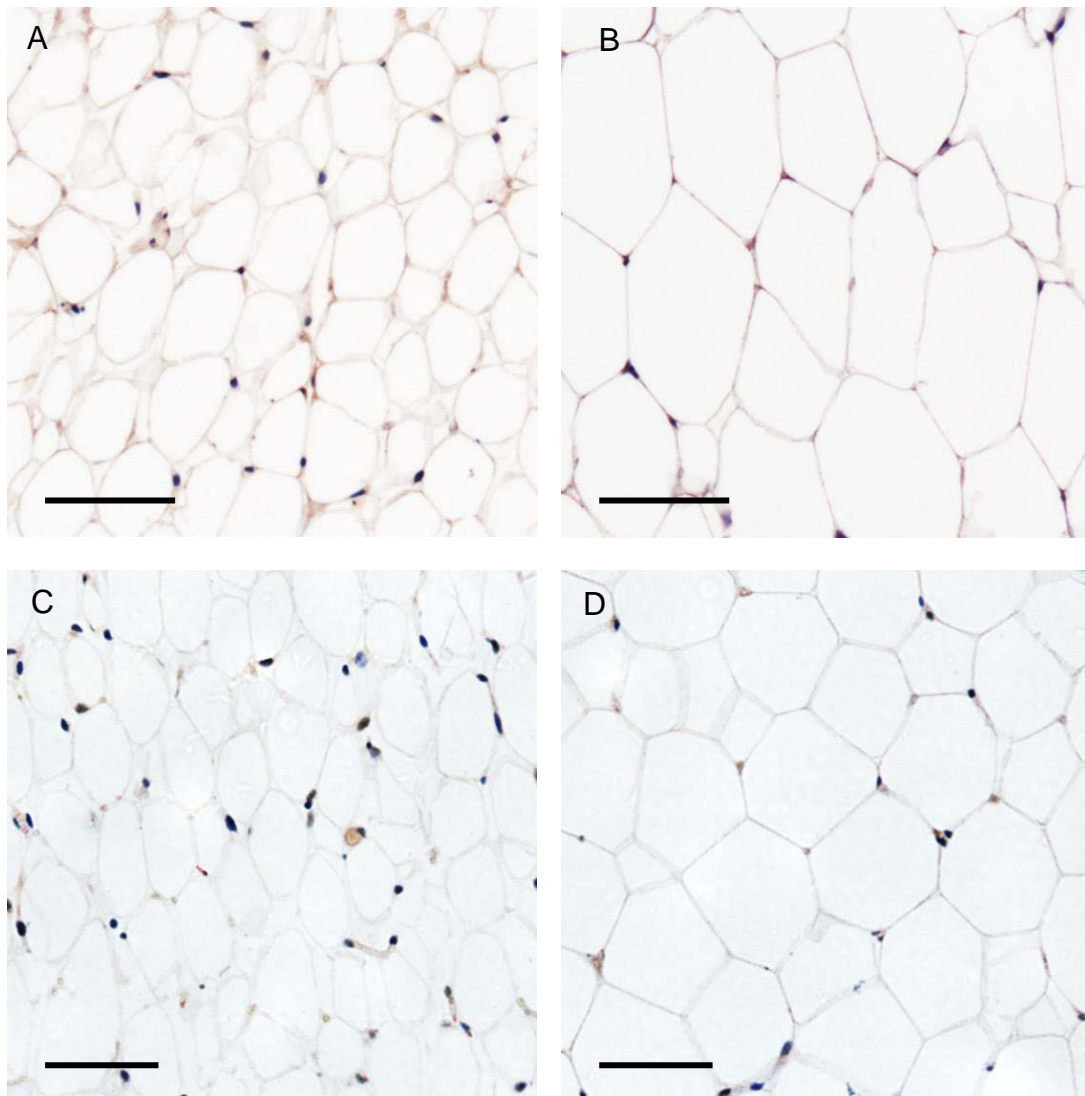


Fig. S2. Representative images demonstrating distribution of staining for GRP78 (A, B) and pJNK (C, D) in adipose tissue from lean (A, C) and obese (B, D) animals at 17 months of age (brown DAB staining in perinuclear areas). Bars represent 50 μ m.

Table S1. Primer forward and reverse sequences and product length

Pathway	Gene	Accession number	Sequence	Product size (kb)
Inflammation	<i>Tlr4</i>	NM_001135930.1	TGCTGGCTGCAAAAAGTATG	148
			CCCTGTAGTGAAGGCAGAGC	
	<i>Ilbhsd1</i>	NM_001009395	AGCATTGTGGTCGTCTCCT	127
			CCTTGGTCGCCTCATATTCC	
	<i>Fas</i>	NM_001123003	CGGGATCTGGGTTCACTTGTC	165
			AACAGGTGCTCACGATATAGGC	
Autophagy	<i>Beclin1</i>	NM_001033627	CCAGGAGGAAGAGGCTAACT	116
			AAGCTGTTGGCACTTTCTGT	
	<i>Atg12</i>	NM_001076982	CATTCTGCTAAAGGCTGTAGGA	127
			GTTCTGAAGCCACAAGTTTAAGG	
Unfolded protein response	<i>Edem1</i>	NM_001103092	GTCTGGAAAAGTACACAAAAGTCA	123
			AGCAGATACAGGTATTTACAGGTC	
	<i>Grp78</i>	NM_001075148	TGAAACTGTGGGAGGTGTCA	170
			TCGAAAGTTCCCAGAAGGTG	
	<i>Atf4</i>	NM_001142518	AGATGACCTGGAAACCATGC	189
			AGGGGGAAGAGGTTGCAAGA	
	<i>Atf6</i>	AY942654.1	AACCAGTCCTTGCTGTTGCT	223
			CTTCTTCTTGCGGGACTGAC	
Energy sensing	<i>Ampk</i>	NM_001112816	GCTGGATTTTGAATGGAAGG	157
			CAGCACCTCATCATCAATGC	
	<i>Mtor</i>	NM_001145455	GCCTTCCGACCTTCTGCCTTC	97
			CCGCTGTCCGTTCCCTTCTCC	
Leptin	<i>Leptin</i>	NM_173928.2	GGGTCACTGGTTTGGACTTCA	97
			ACTGGCGAGGCTCTGTTGGTA	
	<i>Obr</i>	NM_001009763	TGAAACCACTGCCTCCATCC	131
			TCCACTTAAACCATAGCGAATCTG	
Reference	<i>Rpo</i>	NM_001012682.1	CAACCCTGAAGTGCTTGACAT	226
			AGGCAGATGGATCAGCCA	
	<i>Ywhaz</i>	NM_174814.2	TGTAGGAGCCCGTAGGTCATCT	100
			TTCTCTGTATTCTCGAGCCATCT	
	<i>Rpl19</i>	Xm_012141899	CAACTCCCGCCAGCAGAT	75
			CCGGGAATGGACAGTCACA	