

Supplementary Material

Testis-specific isoform of angiotensin-converting enzyme (tACE) as a candidate marker for bull fertility

Mina Ojaghi^A, John Kastelic^A and Jacob C. Thundathil^{A,B}

^AFaculty of Veterinary Medicine, Department of Production Animal Health, University of Calgary, HM 400, 3330 Hospital Drive NW, Calgary, AB T2N 4N1, Canada.

^BCorresponding author. Email: jthundat@ucalgary.ca

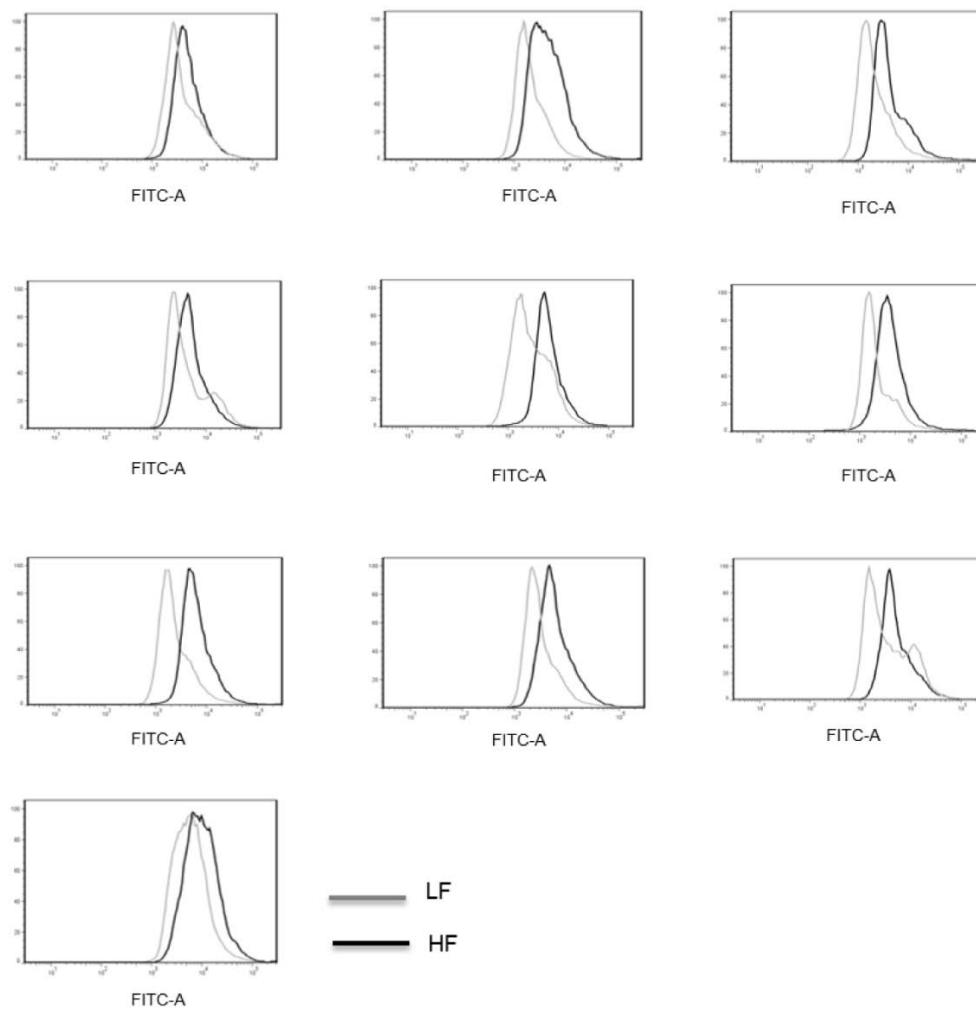


Fig. S1. Flow cytometry histogram patterns of each individual HF and LF bull used in the study.