

Supplementary Material

Elongin B is a binding partner of the male germ cell nuclear speckle protein sperm-associated antigen 16S (SPAG16S) and is regulated post-transcriptionally in the testis

Zhengang Zhang^{A,B}, Qian Huang^{C,D}, Zhenyu Wang^{C,E}, Jie Zou^F, Zuoren Yu^G, Jerome F. Strauss III^B and Zhibing Zhang^{C,H,I}

^ADepartment of Gastroenterology, Tongji Hospital, Huazhong University of Science and Technology, 1095 Jiefang da dao, Wuhan, Hubei 430030, China.

^BDepartment of Obstetrics and Gynecology, Virginia Commonwealth University, 1101 E. Marshall Street, Richmond, VA 23298, USA.

^CDepartment of Physiology, Wayne State University, 275 E Hancock Street, Detroit, MI 48201, USA.

^DDepartment of Occupational and Environmental Health, Hubei Province Key Laboratory of Occupational Hazard Identification and Control, School of Public Health, Wuhan University of Science and Technology, 2 Huangjiahu xi lu, Wuhan, Hubei 430060, China.

^EDepartment of Biochemistry, School of Medicine, Wuhan University of Science and Technology, 2 Huangjiahu xi lu, Wuhan, Hubei 430065, China.

^FWuhan Institute of Skin Disease Prevention and Control, 64 Wusheng lu, Wuhan, Hubei 430030, China.

^GResearch Center for Translational Medicine, Tongji University School of Medicine, Shanghai East Hospital, 150 Jimo lu, Shanghai, China.

^HDepartment of Obstetrics and Gynecology, Wayne State University, 275 E Hancock Street, Detroit, MI 48201, USA.

^ICorresponding author. Email: gn6075@wayne.edu

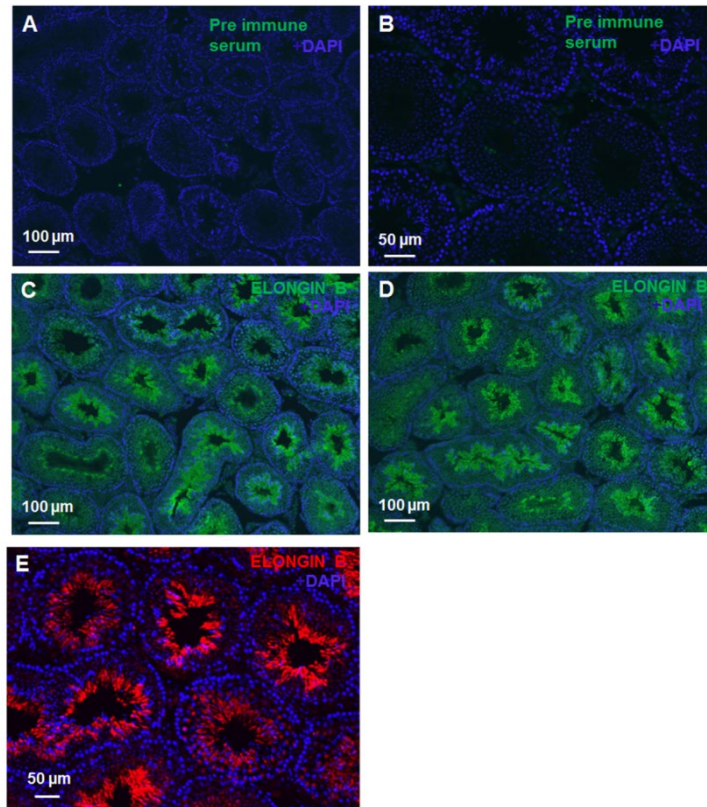


Fig. S1. Immunofluorescence analysis of Elongin B localisation in the testis. (A, B) Negative controls. The sections were stained with pre-immune rabbit serum; (C, D) low magnification images showing Elongin B localisation (green) the seminiferous tubules; (E) Elongin B is labelled red.