

Supplementary Material

Effect of exogenous hormones on R-spondin 1 (*RSPO1*) gene expression and embryo development in *Pelodiscus sinensis*

Hongwei Liang^{A,B,D}, Yan Meng^B, Lihuan Cao^B, Xiang Li^C and Guiwei Zou^{B,D}

^AKey Laboratory of Aquatic Genomics, Ministry of Agriculture, Yangtze River Fisheries Research Institute, Chinese Academy of Fisheries Science, Wuhan, Hubei 430223, China.

^BYangtze River Fisheries Research Institute, Chinese Academy of Fishery Sciences, Wuhan, Hubei 430223, China.

^CAnhui Xijia Agricultural Development Co. Ltd, Bengbu, Anhui 233700, China.

^DCorresponding authors. Emails: lianghw@yfi.ac.cn; zougw@yfi.ac.cn

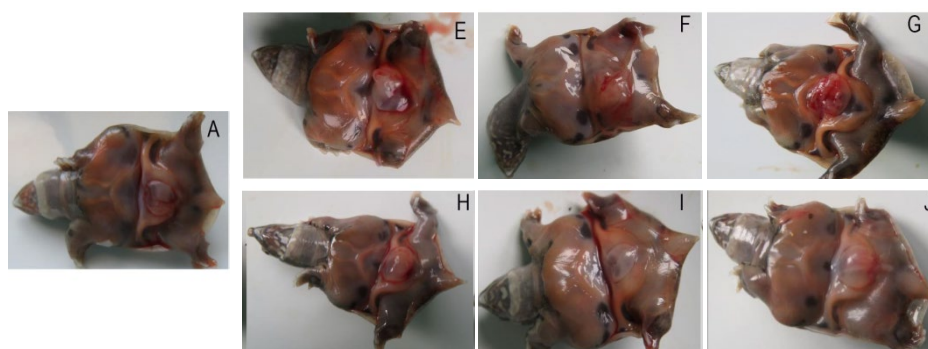


Fig. S1. Embryonic external morphology of Chinese softshell turtle treated by different hormones. (A) Control group. (E) E₂ 2.5 mg mL⁻¹ group. (F) E₂ 5 mg mL⁻¹ group. (G) E₂ 10 mg mL⁻¹ group. (H) LE 2.5 mg mL⁻¹ group. (I) LE 5 mg mL⁻¹ group. (J) LE 10 mg mL⁻¹ group.

Table S1. External morphology of larvae Chinese softshell turtle treated with different hormone

Group	Weight (g)	Carapace length (cm)	Carapace width (cm)	Tail length (cm)
Control	3.58±0.28 ^b	2.67±0.09 ^b	2.36±0.07 ^b	0.41±0.04 ^a
E2 2.5 mg mL ⁻¹	3.77±0.29 ^a	2.72±0.09 ^a	2.48±0.08 ^a	0.39±0.05 ^b
E2 5.0 mg mL ⁻¹	3.49±0.23 ^b	2.58±0.10 ^c	2.30±0.10 ^c	0.40±0.05 ^a
E2 10.0 mg mL ⁻¹	3.62±0.30 ^b	2.66±0.10 ^b	2.48±0.09 ^a	0.37±0.05 ^b
LE 2.5 mg mL ⁻¹	3.77±0.24 ^a	2.73±0.10 ^a	2.47±0.09 ^a	0.42±0.04 ^a
LE 5.0 mg mL ⁻¹	3.44±0.25 ^b	2.63±0.10 ^c	2.31±0.09 ^c	0.42±0.06 ^a
LE 10.0 mg mL ⁻¹	3.76±0.28 ^a	2.75±0.09 ^a	2.42±0.90 ^a	0.42±0.05 ^a