

Supplementary Material

Type I interferon receptors and interferon- β -stimulated genes in peripheral blood mononuclear cells and polymorphonuclear leucocytes during early pregnancy in beef heifers

G. D. Melo^A, L. M. F. Pinto^A, C. C. Rocha^A, I. G. Motta^A, L. A. Silva^B, J. C. da Silveira^B, A. M. Gonella-Diaza^C, M. Binelli^D and G. Pugliesi^{A,E}

^ADepartment of Animal Reproduction, School of Veterinary Medicine and Animal Science, Avenida Duque de Caxias Norte, 225, Campus Fernando Costa, University of São Paulo, AQ1 13635-900, Pirassununga, SP, Brazil.

^BDepartment of Veterinary Medicine, School of Animal Science and Food Engineering, Avenida Duque de Caxias Norte, 225, Campus Fernando Costa, University of São Paulo, 13635-900, Pirassununga, SP, Brazil.

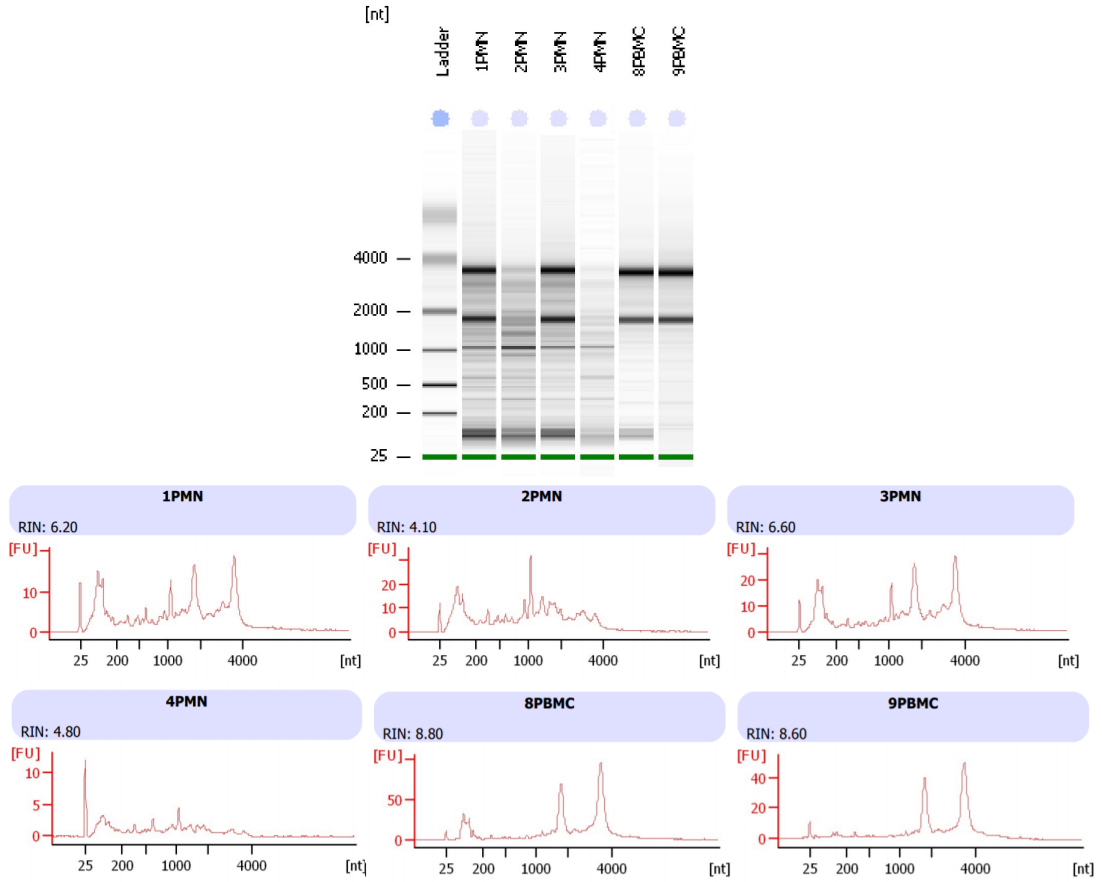
^CNorth Florida Research and Education Center, Institute of Food and Agricultural Sciences, University of Florida, Marianna, 4932 Highway 162, Marianna, FL 32446, USA.

^DDepartment of Animal Sciences, University of Florida, 2250 Shealy Drive, Gainesville, FL 32608, USA.

^ECorresponding author. Email: gpugliesi@usp.br

File S1. Agilent Bioanalyzer profiles of RNA extracted from PMNs and PBMCs. RIN: RNA Integrity Number.

Table S1. Pearson's coefficient correlation and P values between ISGs and IFNARs expression in PMNs and PBMCs on D16, D18, D20 and D0-D20 of pregnant and non-pregnant heifers.



File S1. Agilent Bioanalyzer profiles of RNA extracted form PMNs and PBMCs. RIN: RNA Integrity Number.

Table S1. Pearson's coefficient correlation and P values between ISGs and IFNARs expression in PMNs and PBMCs on D16, D18, D20 and D0-D20 of pregnant and non-pregnant heifers

	<i>IFNAR I</i>				<i>IFNAR II</i>			
	D16	D18	D20	D0-D20	D16	D18	D20	D0-D20
PMNs								
<i>ISG15</i>	0.40 (NS)	0.27 (NS)	0.02 (NS)	-0.05 (NS)	0.31 (NS)	-0.13 (NS)	-0.32 (NS)	-0.04 (NS)
<i>OAS1</i>	0.43 (NS)	0.11 (NS)	0.04 (NS)	-0.004 (NS)	-0.14 (NS)	-0.23 (NS)	-0.26 (NS)	-0.10 (NS)
<i>MX1</i>	0.30 (NS)	0.37 (NS)	0.23 (NS)	0.36 (0.0005)	0.37 (NS)	0.20 (NS)	0.21 (NS)	-0.14 (NS)
<i>MX2</i>	0.47 (NS)	-0.11 (NS)	0.26 (NS)	-0.14 (NS)	0.66 (0.01)	-0.16 (NS)	-0.16 (NS)	0.27 (0.02)
PBMCs								
<i>ISG15</i>	0.08 (NS)	0.06 (NS)	-0.34 (NS)	-0.05 (NS)	0.01 (NS)	-0.04 (NS)	-0.44 (NS)	-0.11 (NS)
<i>OAS1</i>	0.02 (NS)	0.15 (NS)	-0.34 (NS)	-0.05 (NS)	0.06 (NS)	0.006 (NS)	-0.66 (NS)	-0.33 (NS)
<i>MX1</i>	0.09 (NS)	0.17 (NS)	0 (NS)	0.07 (NS)	0.06 (NS)	-0.0001 (NS)	-0.16 (NS)	0.20 (0.03)
<i>MX2</i>	-0.25 (NS)	-0.10 (NS)	-0.35 (NS)	-0.005 (NS)	-0.15 (NS)	-0.12 (NS)	-0.36 (NS)	-0.07 (NS)