

Supplementary Material

Successful sperm cryopreservation in Egyptian spiny mice *Acomys cahirinus*

Jarrod McKenna^{A,B}, Sally Catt^A, Mulyoto Pangestu^A and Peter Temple-Smith^A

^AEducation Program in Reproduction & Development, Department of Obstetrics & Gynaecology, School of Clinical Sciences, Monash University, Victoria, Australia.

^BCorresponding author. Email: jarrod.mckenna@monash.edu

Fig. S1. Flowchart of sperm analysis procedure for both Experiment 1 and 2 adapted from Takeo and Nakagata (2010).

Fig. S2. Micrograph displaying sperm DNA fragmentation.

Table S1. Staining patterns of fluorescently labelled sperm.

Table S2. Comparative post-thaw motility and membrane integrity of spiny mouse spermatozoa when assessed immediately after thawing and following a two-hour incubation in warmed handling media.

Sperm released into warmed M2 handling media (50 μ L)

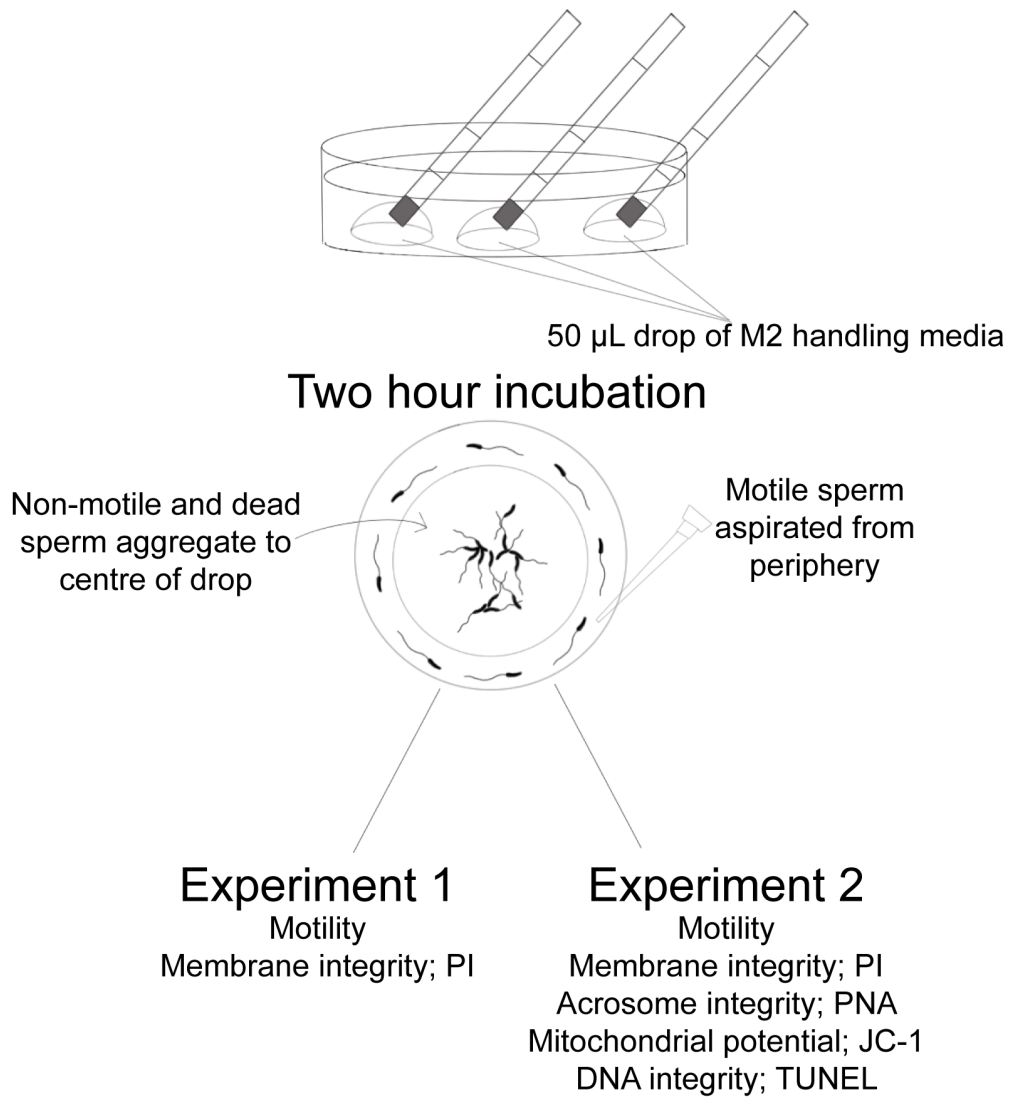


Fig. S1. Flowchart of sperm analysis procedure for both Experiment 1 and 2 adapted from Takeo and Nakagata (2010).

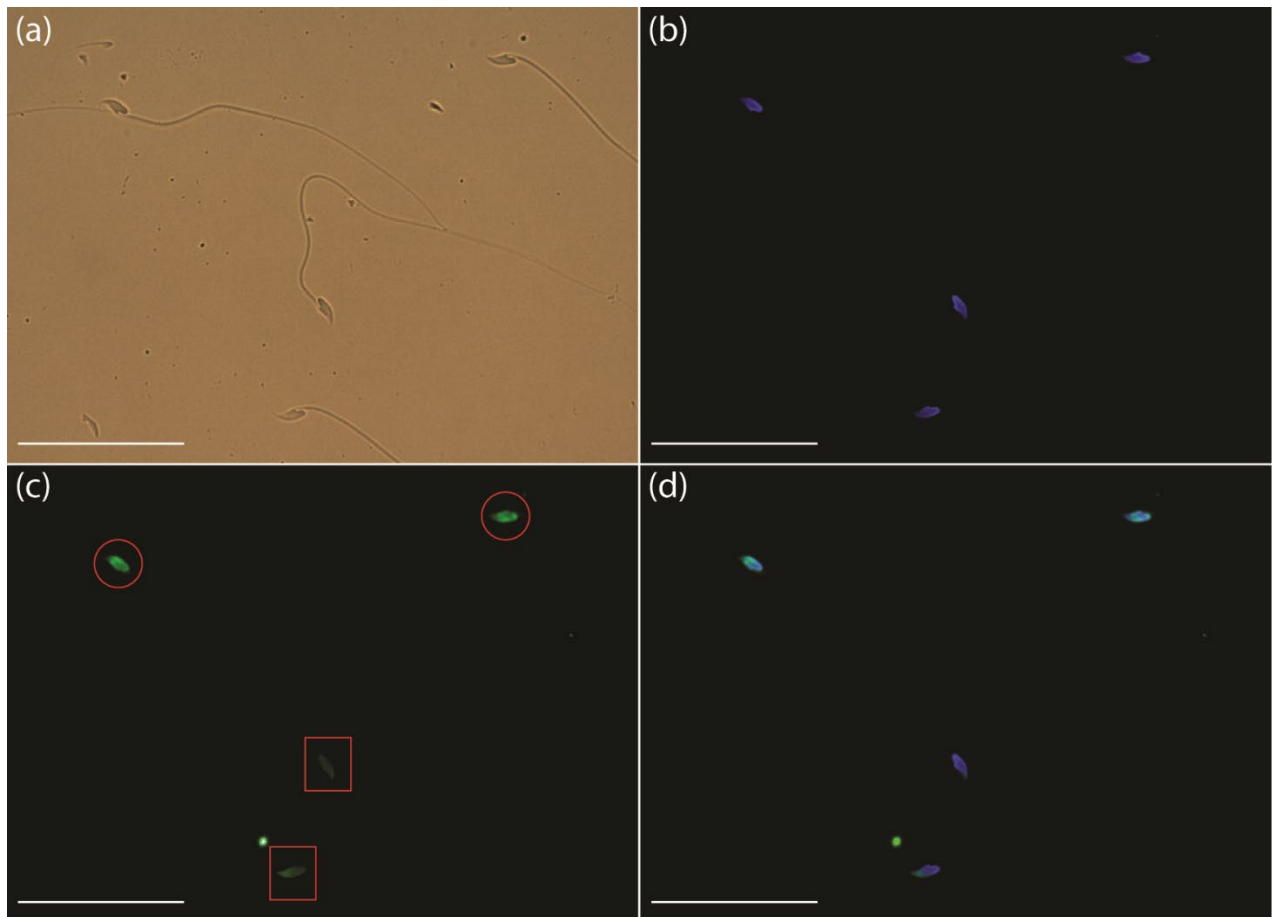


Fig. S2. Micrograph displaying sperm DNA fragmentation. (a) Bright field image of *A. cahirinus* spermatozoa; (b) H333342 positive sperm; (c) TUNEL positive (circles) and negative (squares) spermatozoa; (d) Merged image showing TUNEL and H333342 positive (circles) and negative (rectangles) spermatozoa. Scale bars indicate 50 μ m.

Table S1. Staining patterns of fluorescently labelled sperm

+, fluorescent positive; -, fluorescent negative

Staining pattern			Sperm classification		
PI	PNA	JC-1	Membrane integrity	Acrosome integrity	Mitochondrial potential
+ (purple) - (blue)	+ (green) - (absent)	+ (orange/yellow) - (green)			
-	-	+	Intact	Intact	High Low
-	+	+	Intact	Damaged	High Low
+	-	+	Damaged	Intact	High Low
+	+	+	Damaged	Damaged	High Low

Table S2. Comparative post-thaw motility and membrane integrity of spiny mouse spermatozoa when assessed immediately after thawing and following a two-hour incubation in warmed handling media

Data are mean of six animals and two slides per animal. Motility quality is described as + non-progressive, ++ slow-progressive and +++ rapid-progressive motility

	Immediate assessment				Two-hour incubation			
	18R3S	15R3S	15R5S	10R5S	18R3S	15R3S	15R5S	10R5S
Cryopreservation solution	M	M	M	M	M	M	M	M
Average motility (%)	14	17	17	19	34	35	35	19
Motility quality	++	+	+	+	++	++	++	++
Average membrane integrity (%)	24	22	24	27	36	39	42	25