

## Supplementary Material

### **Equine early pregnancy endocrine profiles and ipsilateral endometrial immune cell, gene expression and protein localisation response**

*Irene Kalpokas<sup>A,E</sup>, María Noel Martínez<sup>A</sup>, Daniel Cavestany<sup>C</sup>, Fernando Perdigón<sup>D</sup>, Rodrigo Costa Mattos<sup>B</sup> and Ana Meikle<sup>A</sup>*

<sup>A</sup>Laboratory of Animal Endocrinology and Metabolism, Veterinary Faculty, Montevideo, Uruguay.

<sup>B</sup>Reprolab, Faculdade de Veterinaria, UFRGS, Porto Alegre, Brazil.

<sup>C</sup>Department of Reproduction, Veterinary Faculty, Montevideo, Uruguay.

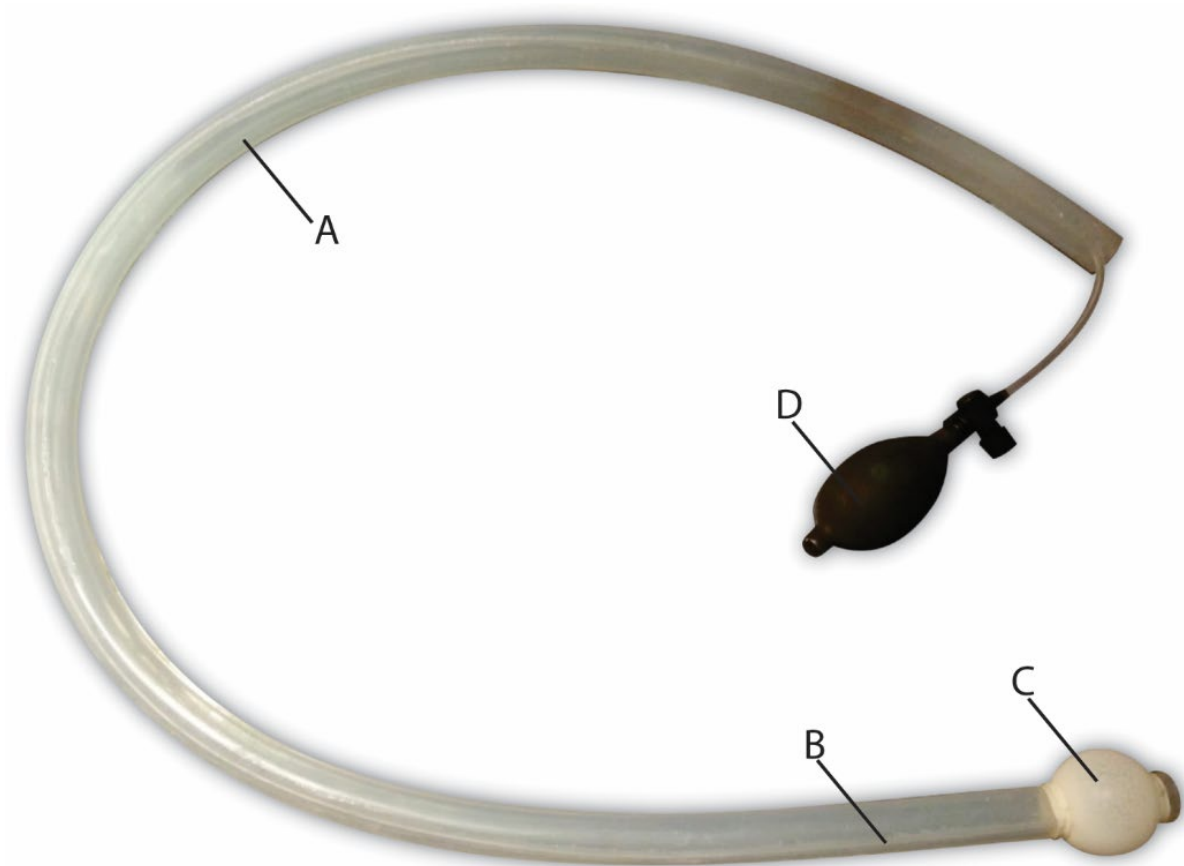
<sup>D</sup>Experimental Farm No. 1, Veterinary Faculty, Montevideo, Uruguay.

<sup>E</sup>Corresponding author. Email: irenekalpokas@gmail.com

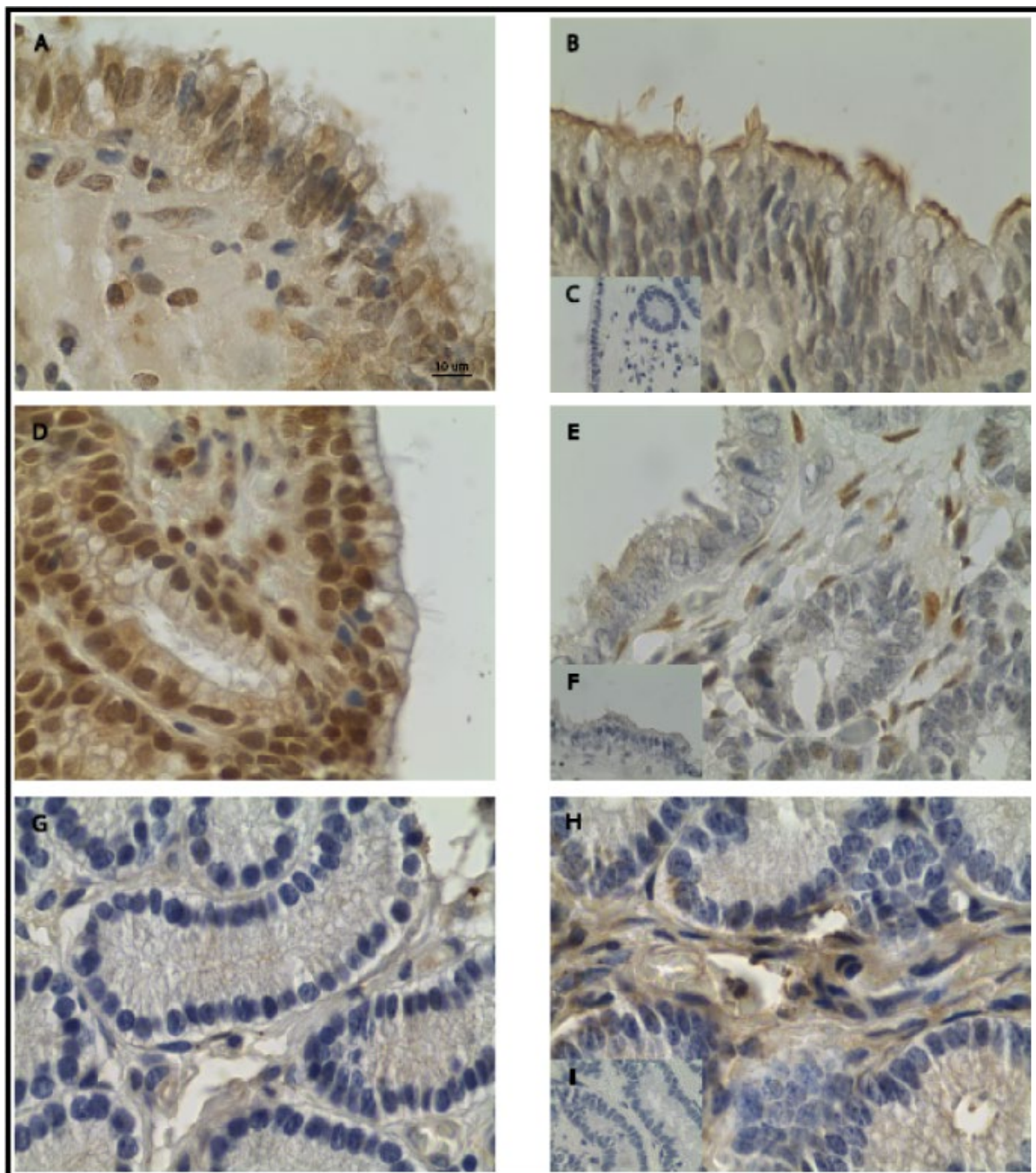
**Fig S1.** Homemade catheter.

**Fig. S2.** Microphotographs of immunohistochemical localisation ...

**Fig. S3.** Microphotographs of immunohistochemical localisation for oxytocin receptor in representative endometrial cross sections of the ipsilateral horn ...

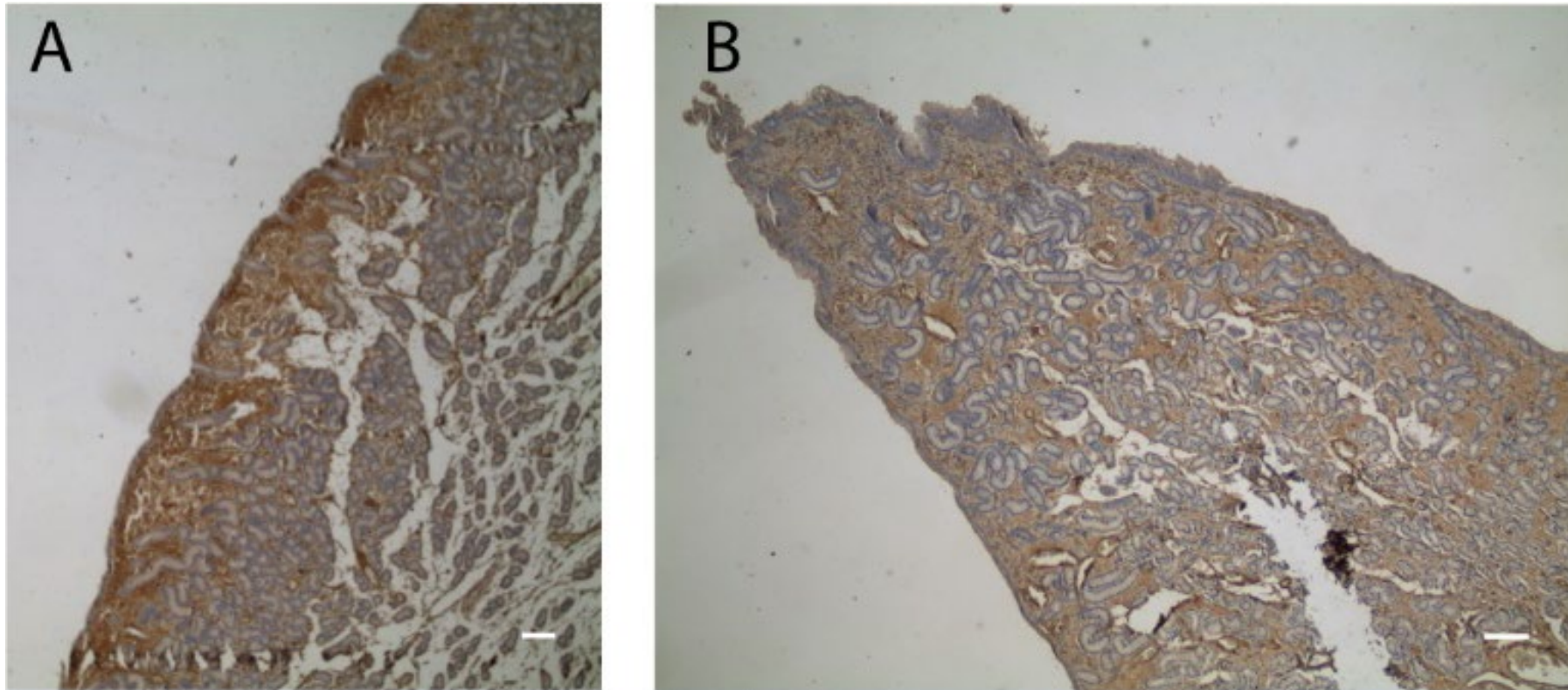


**Fig S1.** Homemade catheter. (A) Silicone tube 1,5 cm inner diameter and 100 cm large. (B) Outer silicone tube of 0,8 cm inner diameter and 110 cm large. (C) A piece of sterile chirurgic glove, attached with fishing line, as inflatable balloon. (D) Sphygmomanometer bulb.



**Fig. S2.** Microphotographs of immunohistochemical localisation of (A), representative endometrial cross sections of the ipsilateral horn for oestrogen receptor  $\alpha$  at day 7 post ovulation of the cyclic and (B) the pregnant group. (D), representative endometrial cross sections of the ipsilateral horn of the pregnant group for progesterone receptor at day 7 and (E) at day 13 post ovulation. (G), representative endometrial cross sections of the ipsilateral horn for prostaglandin-endoperoxide synthase 2 at day 10 post ovulation of the cyclic and (H) pregnant group; (C, F, I), negative controls.

Original magnification x 1000.



**Fig. S3.** Microphotographs of immunohistochemical localisation for oxytocin receptor in representative endometrial cross sections of the ipsilateral horn at day 7 (A) and day 10 (B) post ovulation of the pregnant group. Original magnification x 40. Scale bars= 100  $\mu$ m.