

## Supplementary material for

# Effect of fuel spatial resolution on predictive wildfire models

Ritu Taneja<sup>A,B,D</sup>, James Hilton<sup>B</sup>, Luke Wallace<sup>C</sup>, Karin Reinke<sup>A</sup> and Simon Jones<sup>A</sup>

<sup>A</sup>Geospatial Science, RMIT University, Melbourne, Vic. 3001, Australia.

<sup>B</sup>CSIRO Data61, Private Bag 10, Clayton South, Vic. 3169, Australia.

<sup>C</sup>School of Geography, Planning and Spatial Sciences, University of Tasmania, Hobart, Tas. 7015, Australia.

<sup>D</sup>Corresponding author. Email: s3704716@student.rmit.edu.au

Fire simulations from Mallee heath fire spread model for remaining 8 ignition points using different spatial resolution canopy cover and height (from 2 m (first plot) to 50 m (last plot)) for an hour.

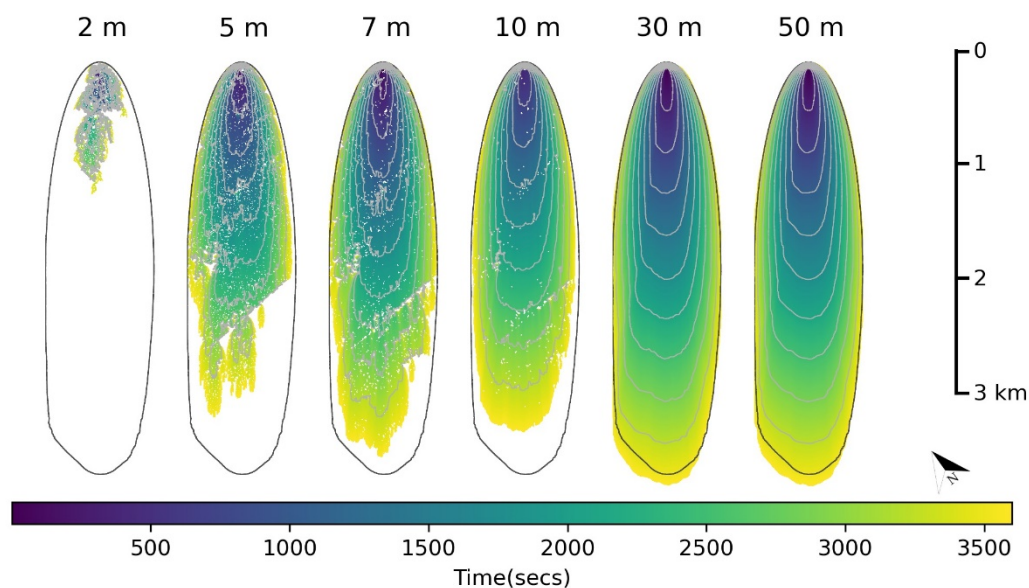


Figure S1: Fire simulated for ignition point 2 using different spatial resolution canopy cover and height (from 2 m (first plot) to 50 m (last plot)) for an hour. Black curve in each plot shows the fire simulated for a constant landscape. White area within black ellipse is completely burnt. Light grey curve in each plot shows isochrones at every 6 minutes interval (10 in total for each plot). North arrow shows the actual north direction.

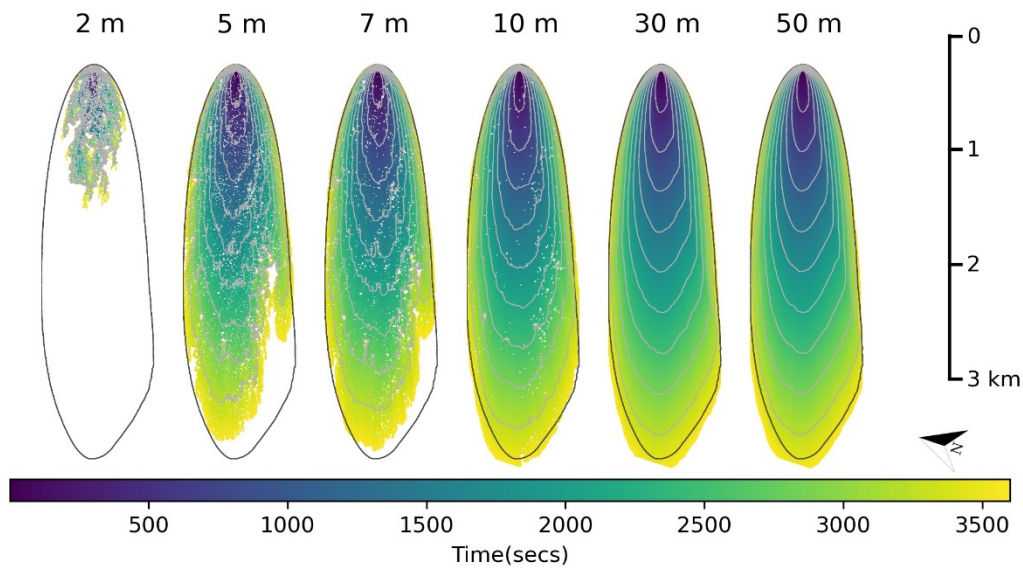


Figure S2: Fire simulated for ignition point 3 using different spatial resolution canopy cover and height (from 2 m (first plot) to 50 m (last plot)) for an hour. Black curve in each plot shows the fire simulated for a constant landscape. White area within black ellipse is completely burnt. Light grey curve in each plot shows isochrones at every 6 minutes interval (10 in total for each plot). North arrow shows the actual north direction.

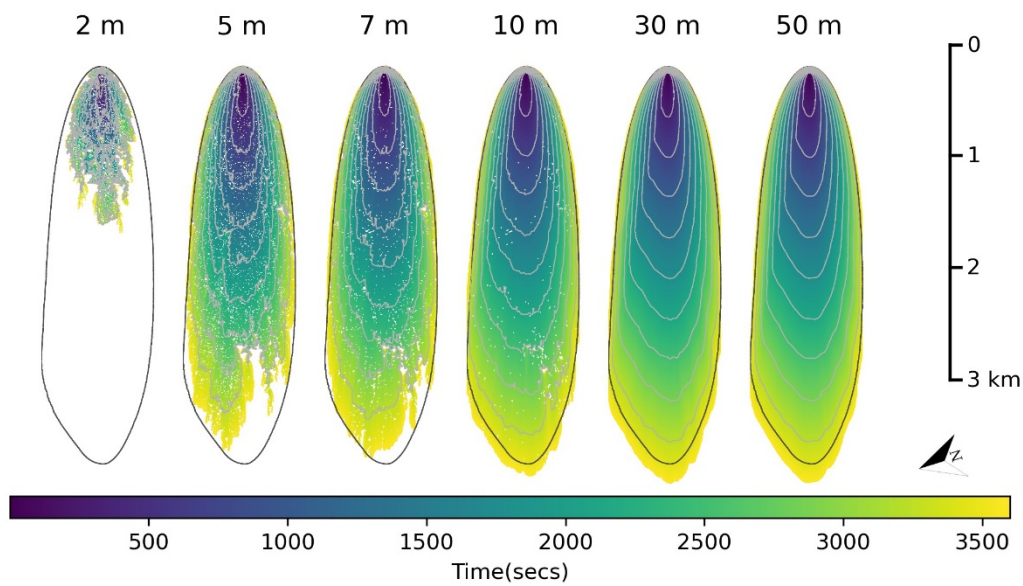


Figure S3: Fire simulated for ignition point 4 using different spatial resolution canopy cover and height (from 2 m (first plot) to 50 m (last plot)) for an hour. Black curve in each plot shows the fire simulated for a constant landscape. White area within black ellipse is completely burnt. Light grey curve in each plot shows isochrones at every 6 minutes interval (10 in total for each plot). North arrow shows the actual north direction.

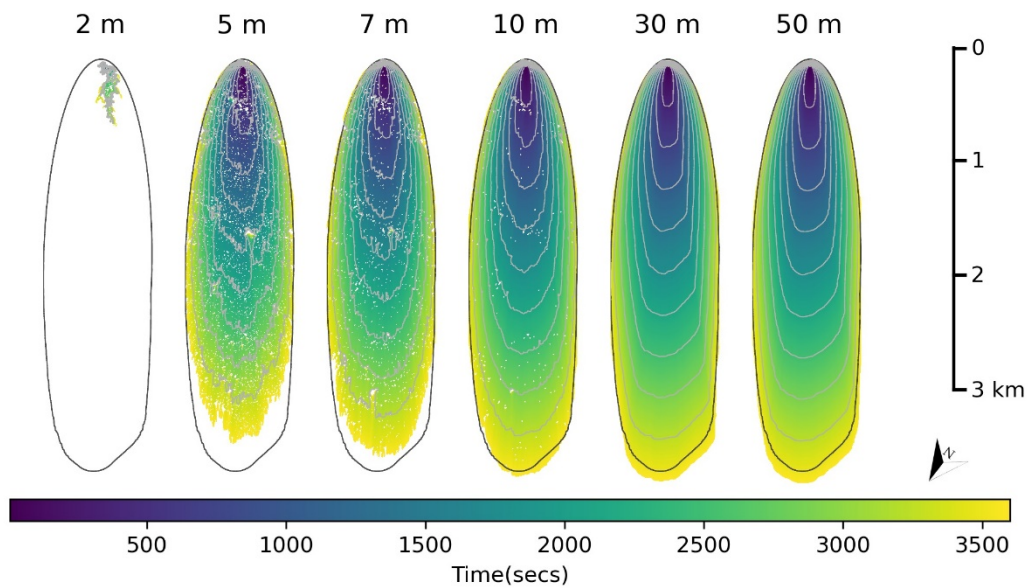


Figure S4: Fire simulated for ignition point 5 using different spatial resolution canopy cover and height (from 2 m (first plot) to 50 m (last plot)) for an hour. Black curve in each plot shows the fire simulated for a constant landscape. White area within black ellipse is completely burnt. Light grey curve in each plot shows isochrones at every 6 minutes interval (10 in total for each plot). North arrow shows the actual north direction.

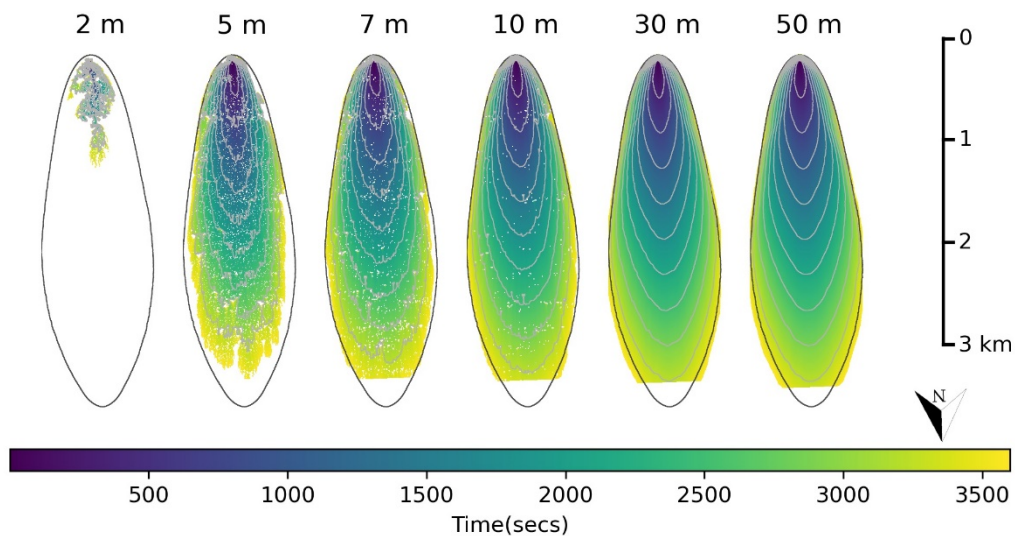


Figure S5: Fire simulated for ignition point 6 using different spatial resolution canopy cover and height (from 2 m (first plot) to 50 m (last plot)) for an hour. Black curve in each plot shows the fire simulated for a constant landscape. White area within black ellipse is completely burnt. Light grey curve in each plot shows isochrones at every 6 minutes interval (10 in total for each plot). North arrow shows the actual north direction.

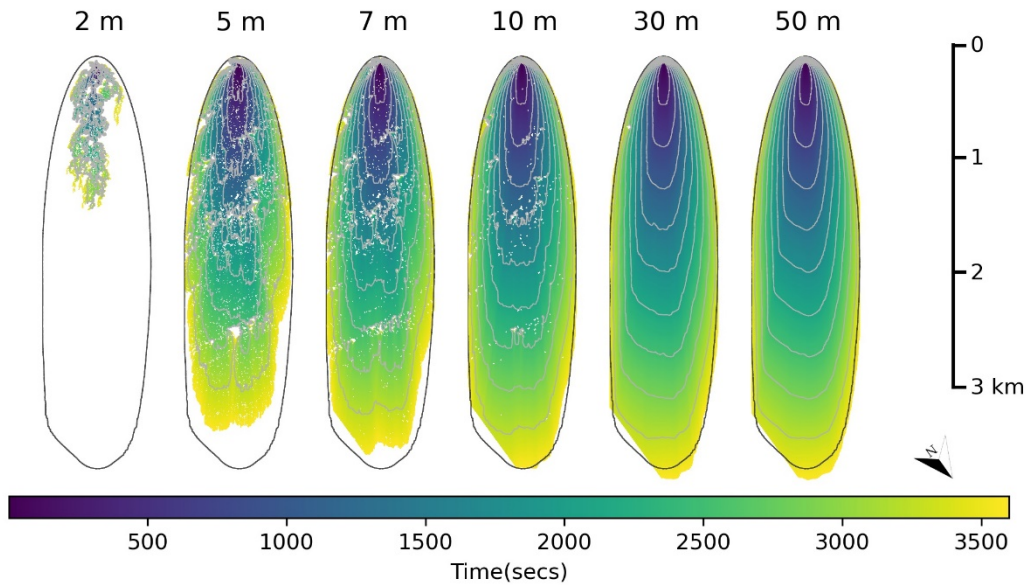


Figure S6: Fire simulated for ignition point 7 using different spatial resolution canopy cover and height (from 2 m (first plot) to 50 m (last plot)) for an hour. Black curve in each plot shows the fire simulated for a constant landscape. White area within black ellipse is completely burnt. Light grey curve in each plot shows isochrones at every 6 minutes interval (10 in total for each plot). North arrow shows the actual north direction.

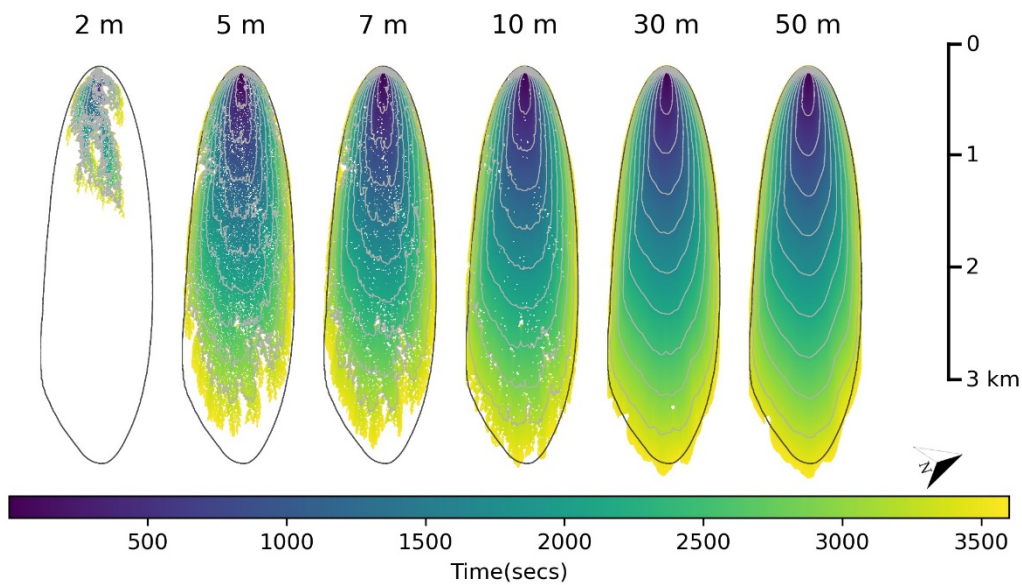


Figure S7: Fire simulated for ignition point 9 using different spatial resolution canopy cover and height (from 2 m (first plot) to 50 m (last plot)) for an hour. Black curve in each plot shows the fire simulated for a constant landscape. White area within black ellipse is completely burnt. Light grey curve in each plot shows isochrones at every 6 minutes interval (10 in total for each plot). North arrow shows the actual north direction.

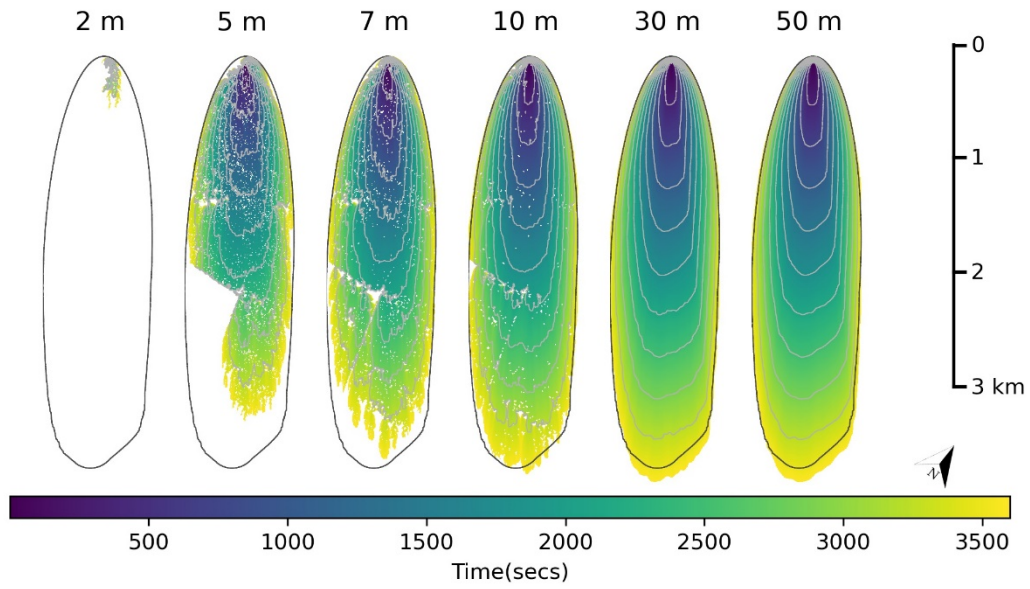


Figure S8: Ignition point 10 Fire simulated for ignition point 10 using different spatial resolution canopy cover and height (from 2 m (first plot) to 50 m (last plot)) for an hour. Black curve in each plot shows the fire simulated for a constant landscape. White area within black ellipse is completely burnt. Light grey curve in each plot shows isochrones at every 6 minutes interval (10 in total for each plot). North arrow shows the actual north direction.