

The HI Content of Compact Groups of Galaxies

J. B. Stevens, R. L. Webster, D. G. Barnes, D. J. Pisano, and M. J. Drinkwater

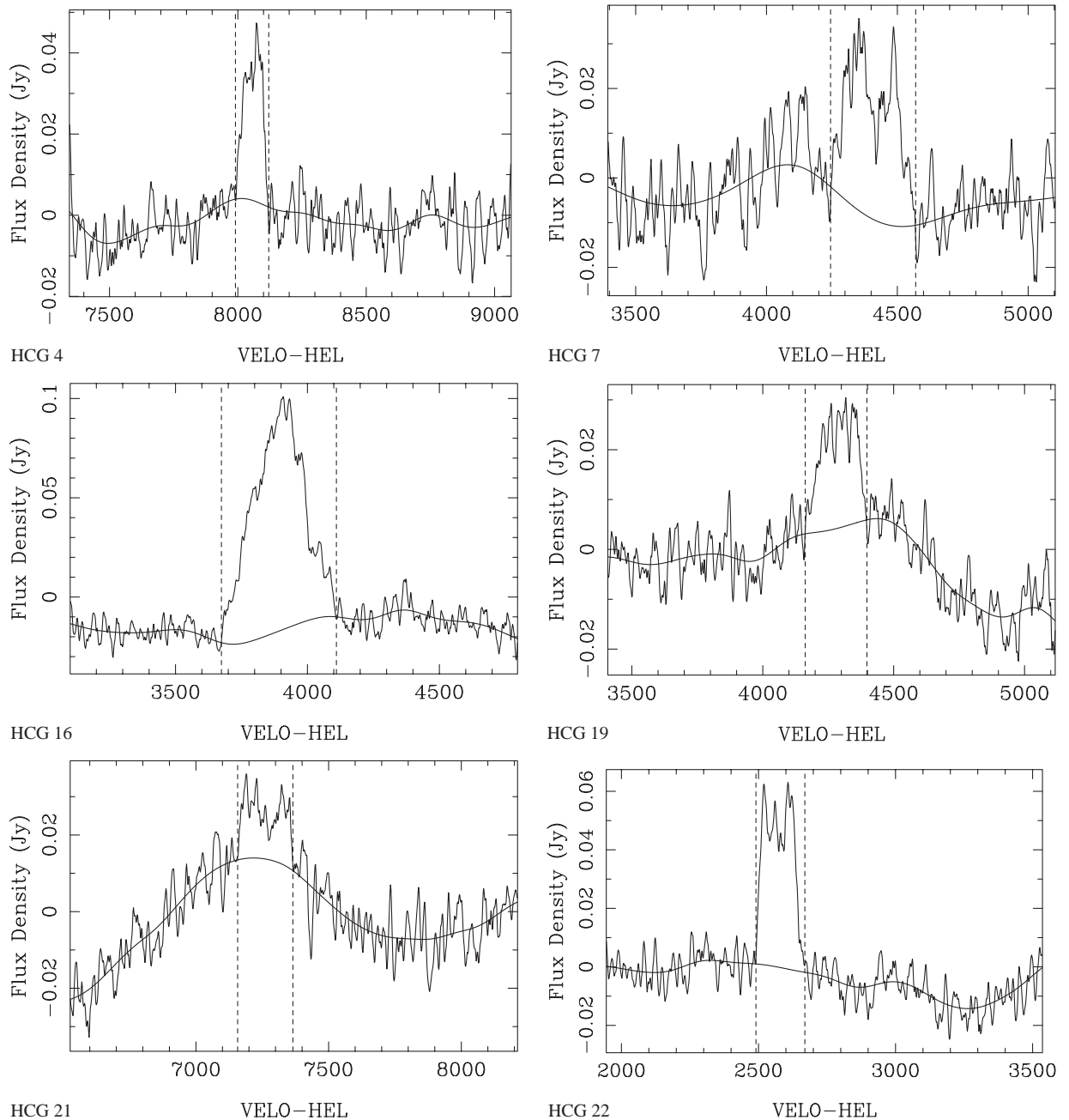


Figure 1 Narrowband MX spectra of the detected compact groups. The solid line in each spectrum is the estimated baseline, and the vertical dashed lines surround the emission region. The emission from HCG 48 has been split into two domains, separated by the area where the profile crosses the baseline, to provide a reliable estimate of the flux.

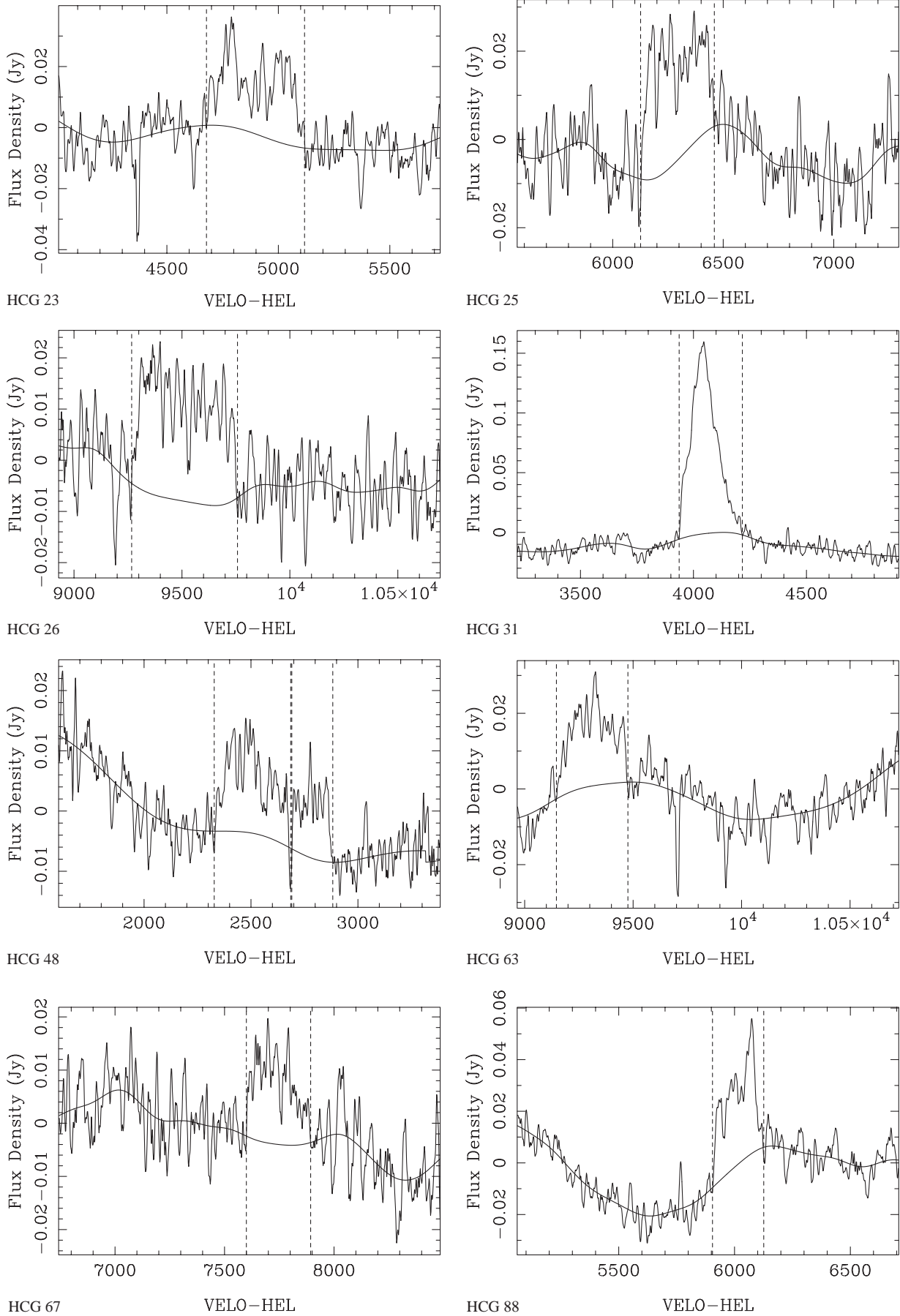


Figure 1 (continued)

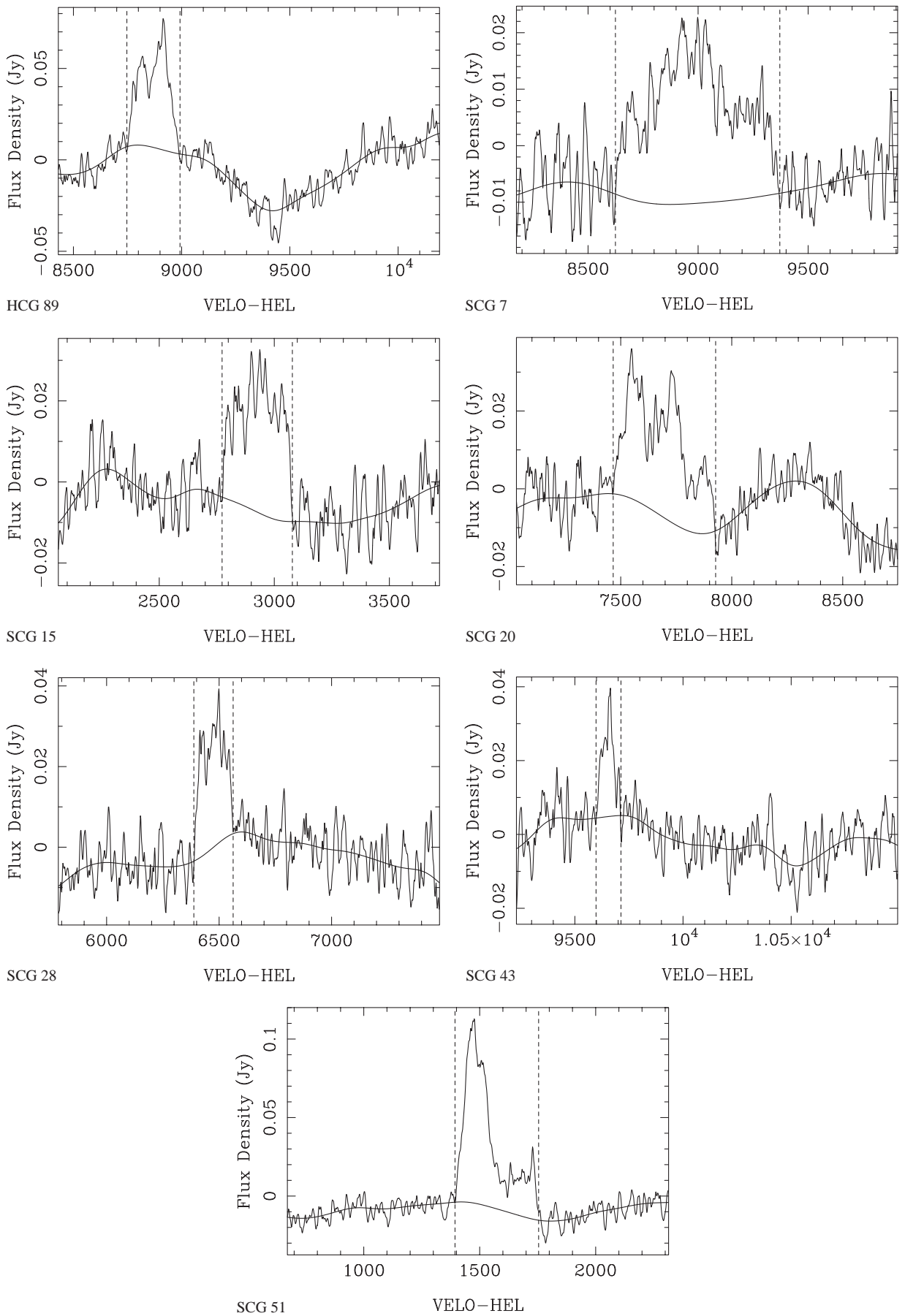


Figure 1 (continued)