

Supporting Information

Synthesis and Preliminary Pharmacological Evaluation of 4'-Arylalkyl Analogues of Clozapine. II. Effect of the Nature and Length of the Linker

Analytical HPLC Conditions - *Supplementary Material*

Waters HPLC System

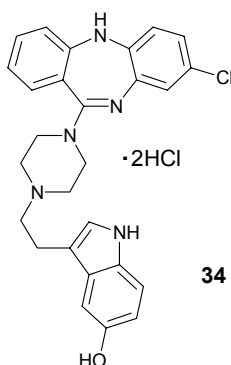
Waters 600 Controller

Waters 486 Tunable Absorbance Detector

Waters 600 Pump

Waters 746 Data Module

8-Chloro-11-{4-[(5-hydroxy-1*H*-3-indolyl)ethyl]piperazino)-5*H*-dibenzo[*b,e*][1,4]diazepine dihydrochloride



Column: Nova-Pak HR C₁₈

Particle Size: 6 μm

Pore Size: 60 Å

Dimensions: 8 mm × 100 mm

Solvent A: 0.1% TFA / H₂O Solvent B: 0.1% TFA / 90% CH₃CN / H₂O

Flow rate = 1.5 mL/min. λ = 260 nm

Isocratic
Gradient

Mobile phase: 60% A / 40% B

100% A (5 minutes)

100% A → 100% B (30 minutes)

100% B (5 minutes)

100% B → 100% A (5 minutes)

100% A (5 minutes)

Retention time: 2.80 minutes

19.07 minutes

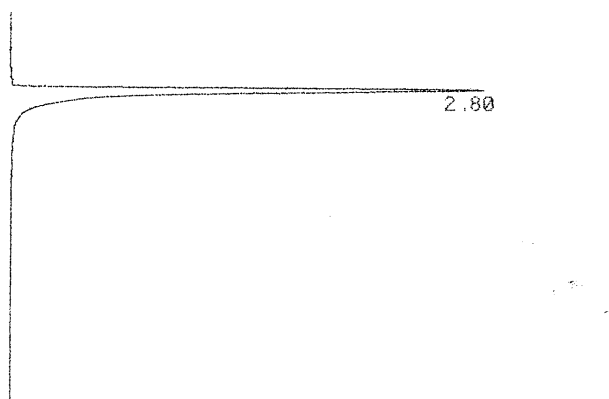


Figure 1.1 HPLC chromatogram of compound **34** under isocratic conditions.

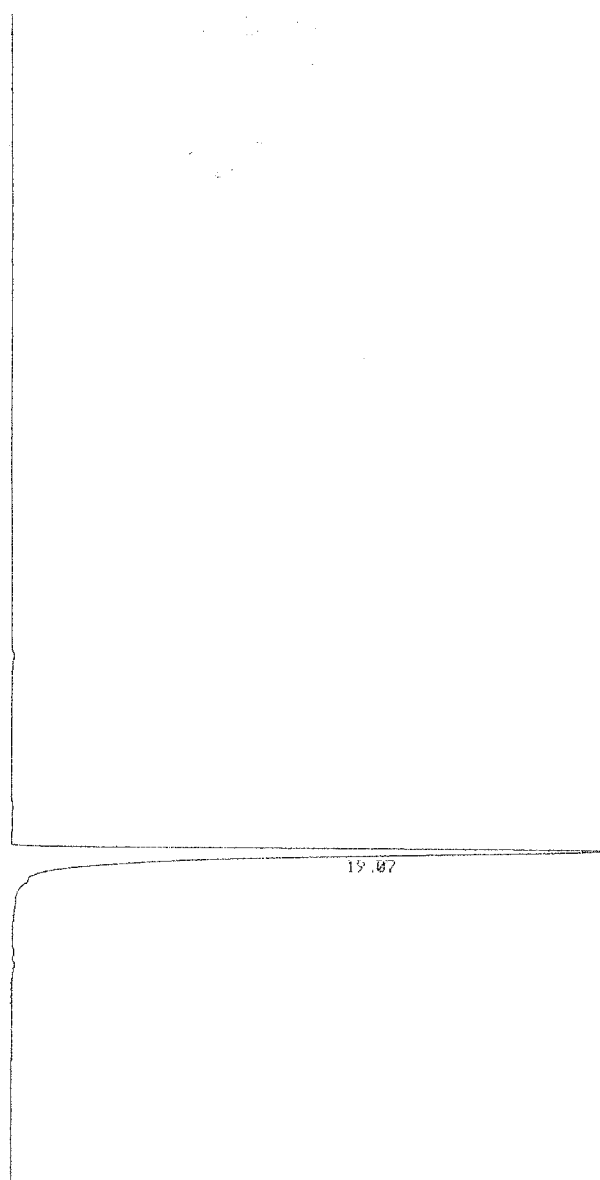
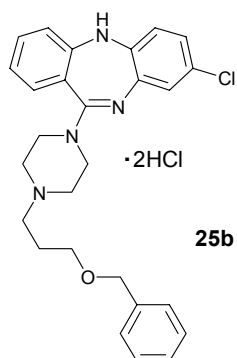


Figure 1.2 HPLC chromatogram of compound **34** under gradient conditions.

11-{4-[3-(Benzyloxy)propyl]piperazino}-8-chloro-5H-dibenzo[b,e][1,4]diazepine dihydrochloride



Column: Nova-Pak HR C₁₈

Particle Size: 6 μm

Pore Size: 60 Å

Dimensions: 8 mm × 100 mm

Solvent A: 0.1% TFA / H₂O Solvent B: 0.1% TFA / 90% CH₃CN / H₂O

Flow rate = 1.5 mL/min. λ = 254 nm

Isocratic
Gradient

Mobile phase: 60% A / 40% B

100% A (5 minutes)

100% A → 100% B (30 minutes)

100% B (5 minutes)

100% B → 100% A (5 minutes)

100% A (5 minutes)

Retention time: 10.18 minutes

25.30 minutes

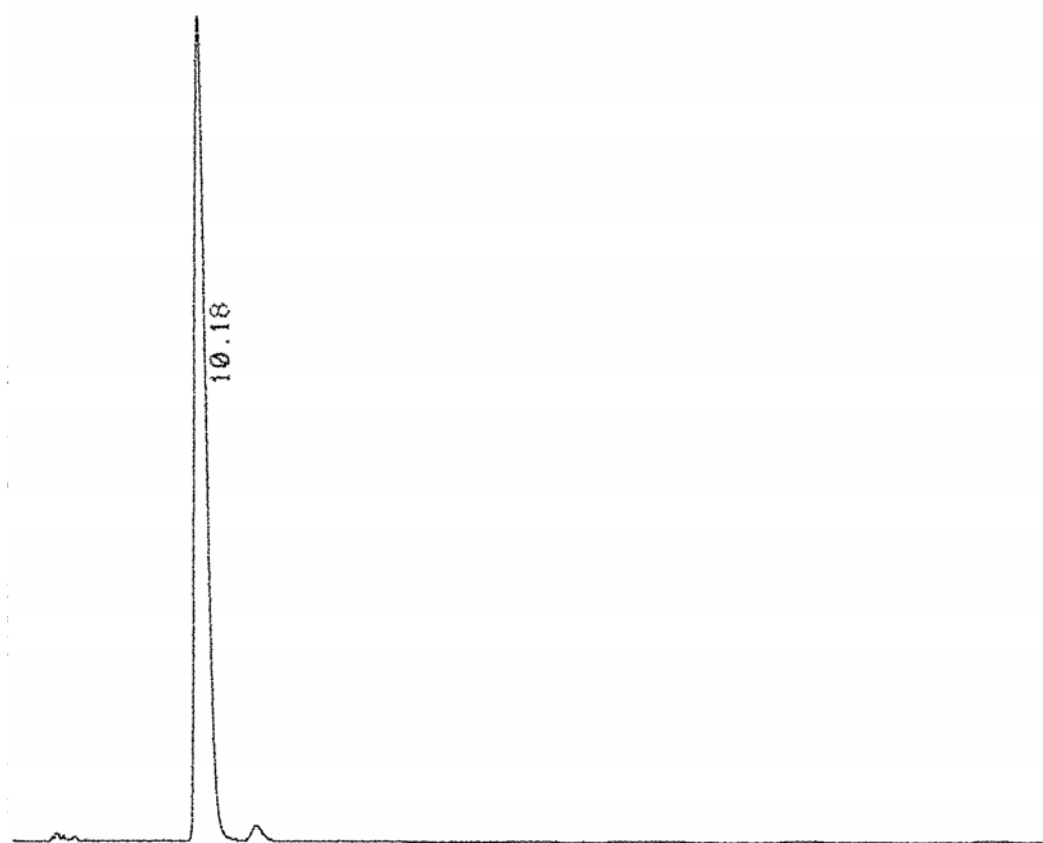


Figure 1.3 HPLC chromatogram of compound **25b** under isocratic conditions.

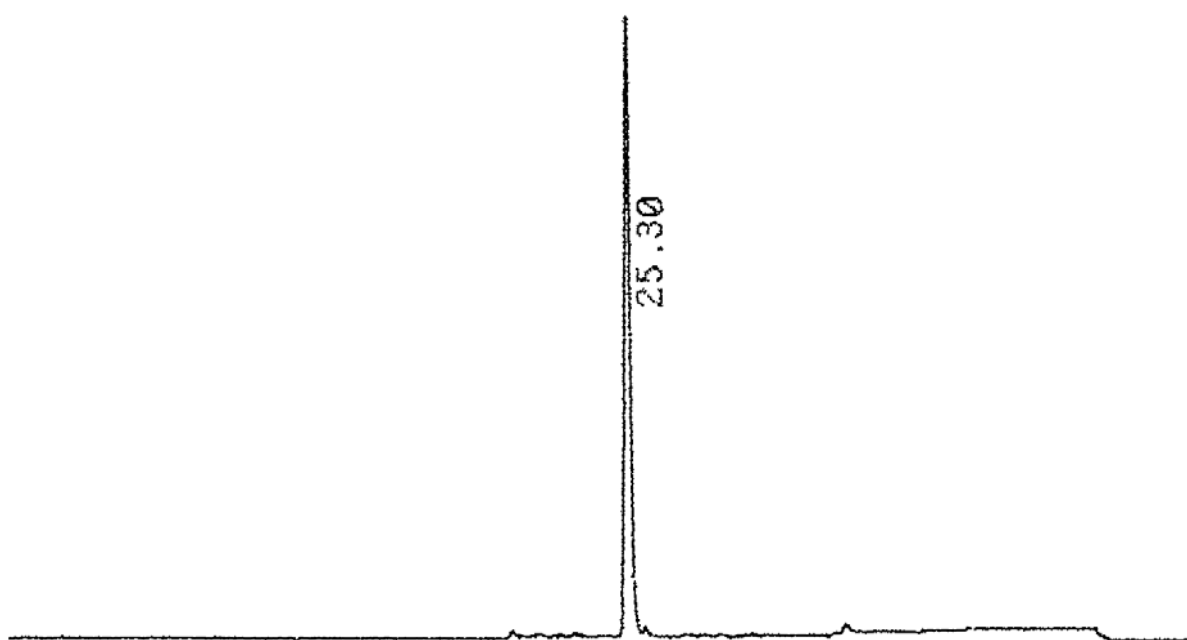


Figure 1.4 HPLC chromatogram of compound **25b** under gradient conditions.