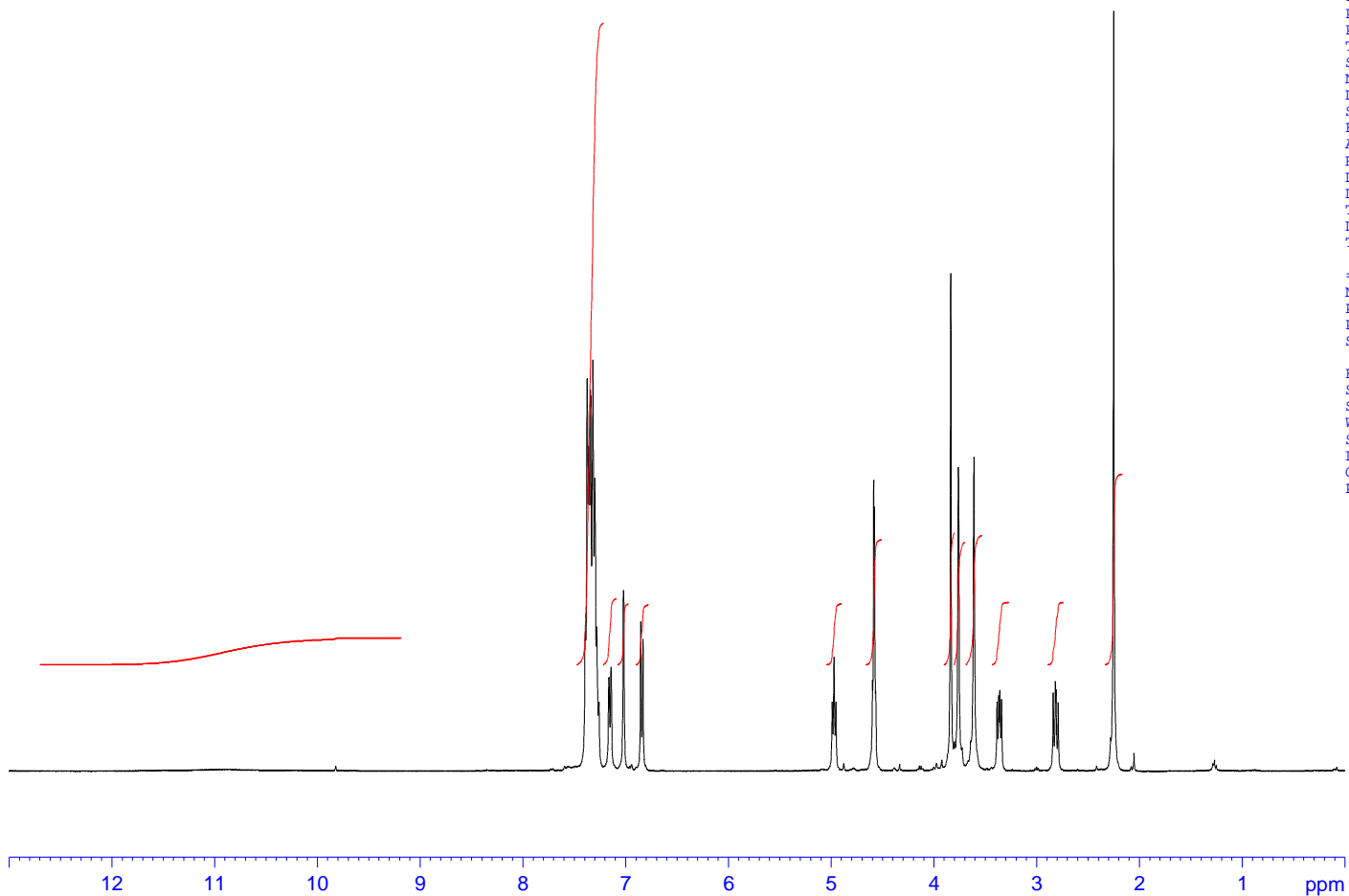


¹³ C shift	JMOD data	Assignment	Comment
157.5	C	C-1	
138.7	C	C-7''	gHMBC to H-6''
136.8	C	C-5'	gHMBC to H-4'
132.3	C	C-4	
129.4	2 × CH	C-6'	gHMBC to H-4'
128.8	2 × CH	C-8''	gHMBC to H-6''
128.7	2 × CH	C-7' or C-9''	Cannot assign
128.6	2 × CH	C-7' or C-9''	Cannot assign
127.8	CH	C-8' or C-10''	Cannot assign
127.4	CH	C-8' or C-10''	Cannot assign
126.6	CH	C-5	gHSQC to H-5
126.3	CH	C-3	gHSQC to H-3
121.9	C	C-2	gHMBC to H-1'
116.2	CH	C-6	gHSQC to H-6
87.5	CH ₂	C-2''	gHSQC to H-2''
76.9	CH	C-5''	gHSQC to H-5''
61.6	CH ₂	C-4'	gHSQC to H-4'
61.0	CH ₂	C-1'	gHSQC to H-1'
60.5	CH ₂	C-4''	gHSQC to H-4''
58.5	CH ₂	C-6''	gHSQC to H-6''
41.4	CH ₃	N-CH ₃	gHSQC to N-CH ₃



1H NMR for compound 11 (400 MHz, CDCl3)



Current Data Parameters
NAME wong0157
EXPNO 10
PROCNO 1

F2 - Acquisition Parameters
Date_ 20070913
Time 18.47
INSTRUM Av400
PROBHD 5 mm QNP 1H/13
PULPROG zg30
TD 32768
SOLVENT CDCl3
NS 32
DS 2
SWH 5995.204 Hz
FIDRES 0.182959 Hz
AQ 2.7329011 sec
RG 71.8
DW 83.400 usec
DE 12.00 usec
TE 298.0 K
D1 1.00000000 sec
TD0 1

==== CHANNEL f1 =====
NUC1 1H
P1 8.50 usec
PL1 -3.00 dB
SF01 400.1326104 MHz

F2 - Processing parameters
SI 65536
SF 400.1300095 MHz
WDW EM
SSB 0
LB 0.10 Hz
GB 0
PC 1.00



¹³C JMOD NMR for compound 11 (100 MHz, CDC13)



Current Data Parameters
NAME wong0157
EXPNO 16
PROCNO 1

F2 - Acquisition Parameters
Date_ 20070914
Time 22.49
INSTRUM Av400
PROBHD 5 mm QNP 1H/13
PULPROG jmod
TD 65536
SOLVENT CDC13
NS 4096
DS 2
SWH 26178.010 Hz
FIDRES 0.399445 Hz
AQ 1.2517875 sec
RG 23170.5
DW 19.100 usec
DE 12.00 usec
TE 298.0 K
CNST11 1.0000000
CNST2 145.0000000
D1 2.0000000 sec
d20 0.00689655 sec
DELTA 0.00001401 sec
TD0 1

=====
===== CHANNEL f1 =====
NUC1 13C
P1 11.00 usec
p2 22.00 usec
PL1 0.00 dB
SFO1 100.6248425 MHz

=====
===== CHANNEL f2 =====
CPDPRG2 waltz65
NUC2 1H
PCPD2 100.00 usec
PL12 18.00 dB
PL2 -3.00 dB
SFO2 400.1316005 MHz

F2 - Processing parameters
SI 65536
SF 100.6127436 MHz
WDW no
SSB 0
LB 0.00 Hz
GB 0
PC 1.40

