

Accessory Publication

**Synthesis and photophysical properties of a
conformationally-flexible mixed porphyrin star pentamer**

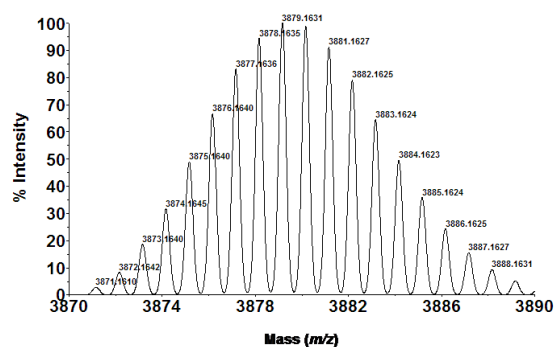
Toby D. M. Bell,^a Sheshanath V. Bhosale,^b Kenneth P. Ghiggino,^a Steven J. Langford,^{b,c} and Clint P. Woodward^b

^ASchool of Chemistry and Bio21 Institute, The University of Melbourne, Parkville, VIC 3010, Australia .

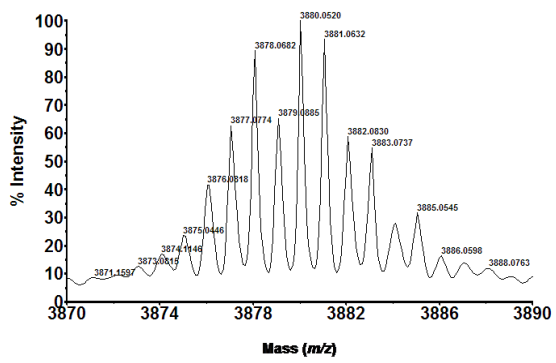
^BSchool of Chemistry, Monash University, Clayton, VIC 3800, Australia.

^CCorresponding author. Email: S.Langford@sci.monash.edu.au

Figure AI 1. MALDI-TOF MS (no matrix) of porphyrin pentamer 1.



(a) Calculated Spectrum



(b) Experimental Spectrum

Figure AI 2. **a)** Relative fraction of light emitted by each fluorescence decay component for **1** in toluene as a function of detection wavelength, **b)** data in (a) weighted by total steady state emission of **1** in toluene at each wavelength, and **c)** expansion of (b). Relative fraction of light emitted by a decay component, i , is given by $a_i\tau_i/\sum a_i\tau_i$ where a_i is the pre-exponential factor for lifetime component τ_i .

