

Accessory Publication**Table S1. Molecular weight data of mPEO-APMA diblock copolymer and mPEO-PAPMA-PDPAEMA triblock copolymer prepared via aqueous RAFT polymerization. (from our previous publication⁴¹).**

Diblock/Triblock copolymers	M_n^a	PDI ^a	M_n^b	Composition ^b
Diblock Copolymer	6,000	1.10	6,000	mPEO ₄₆ -PAPMA ₂₁
Triblock Copolymer	31,800	1.23	27,600	mPEO ₄₆ -PAPMA ₂₁ -PDPAEMA ₁₀₁

a) As determined by ASEC, $dn/dc = 0.164$ (diblock copolymer) and $dn/dc = 0.153$ (triblock copolymer) were used to determine the molecular weights and PDIs.

b) Calculated from ¹H NMR data.

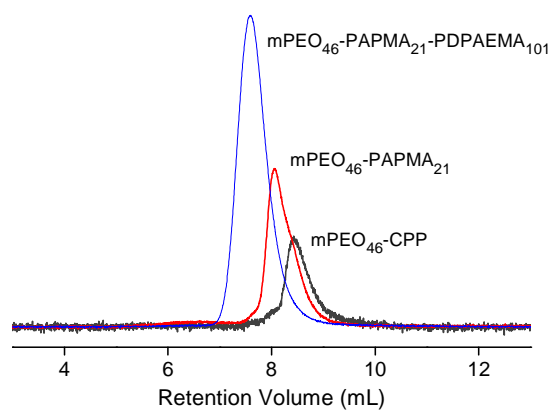


Fig. S1. ASEC traces of macro-CTA (mPEO₄₆-CPP), diblock copolymer (mPEO₄₆-PAPMA₂₁) and triblock copolymer (mPEO₄₆-PAPMA₂₁-PDPAEMA₁₀₁) (from our previous publication⁴¹).